

Spire STL Pipeline

Investment in Infrastructure Expo

February 28, 2017



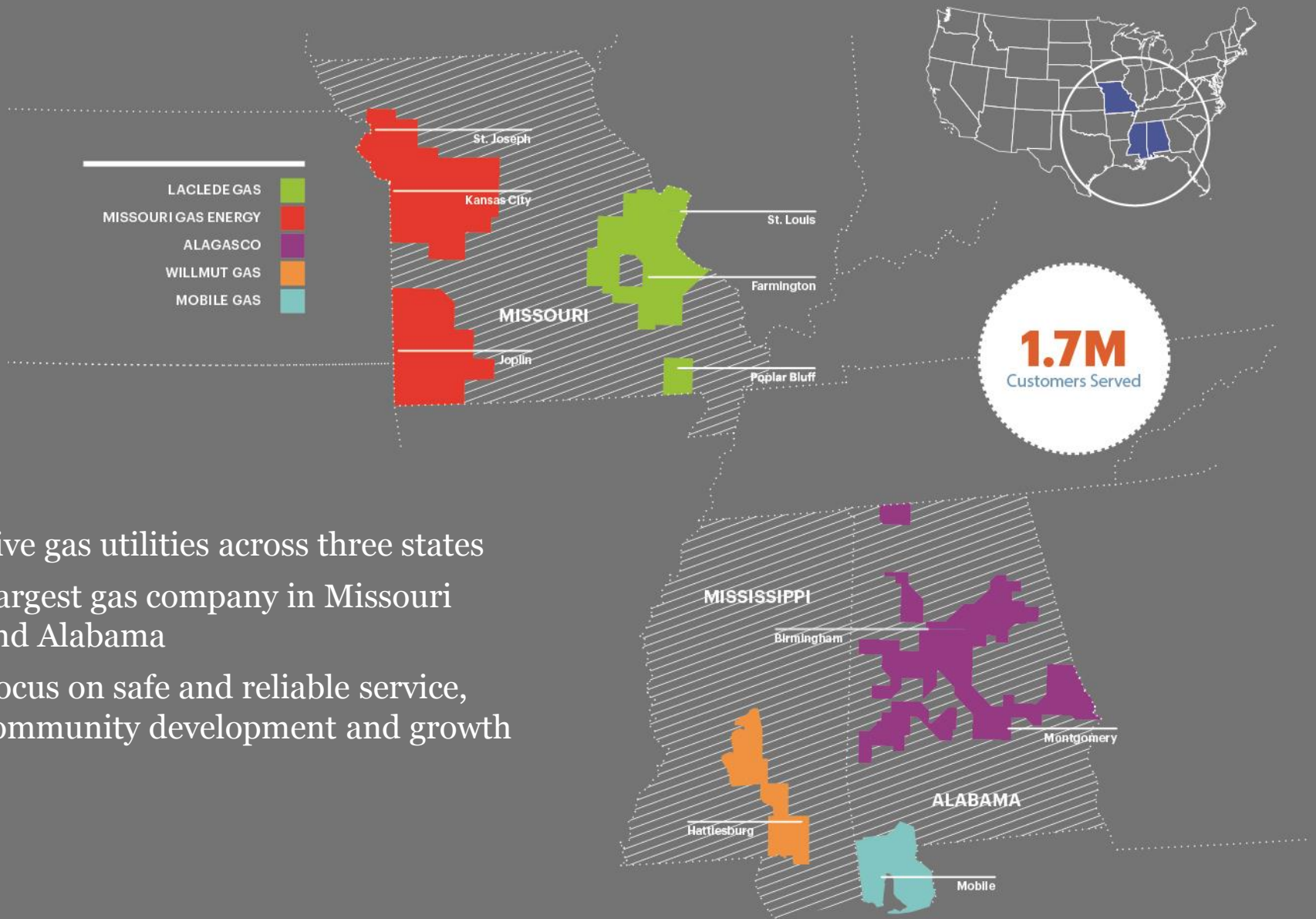
We are Spire

- Since 2012, our transformational journey has been guided by a well-articulated growth strategy
- We have successfully executed our growth strategy by
 - Growing our gas utility business
 - Acquiring and integrating gas utilities
 - Modernizing our gas assets
 - Investing in innovation and technology
- And, we've rebranded to better represent the company we've become and to deliver on our mission to our customers and to our stakeholders

*Answer every challenge,
Advance every community,
And enrich every life through the strength of
our energy.*



Company overview



- Five gas utilities across three states
- Largest gas company in Missouri and Alabama
- Focus on safe and reliable service, community development and growth

Spire STL Pipeline

Who

- Spire STL Pipeline LLC is a subsidiary of Spire Inc.

What

- Approximately 66 mile interstate gas pipeline with a design capacity of 400,000 Dth/day
- Pre-filing docket PF16-9

Why

- Offers a reliable additional source of natural gas to the St. Louis metropolitan area, including Laclede Gas Company's 650,000 customers
- Provides access to cost effective natural gas
- Supports supply diversity and earthquake resiliency for the region
- Creates new commercial and industrial development opportunities in the St. Louis metropolitan area and southwest Illinois

Where

- Illinois and Missouri
-



Spire STL Pipeline project map

- Length
 - 59 miles of 24-inch greenfield pipeline
 - 7 miles of 20-inch existing pipeline
 - Four receipt/delivery stations
- Design capacity—400,000 Dth/day, 1480 psig MAOP
- No compression
- Begins in Scott County, IL at interconnection with Rockies Express Pipeline
- Crosses Greene, Jersey Counties, IL and St. Charles Co, MO
- Terminates in St. Louis, MO

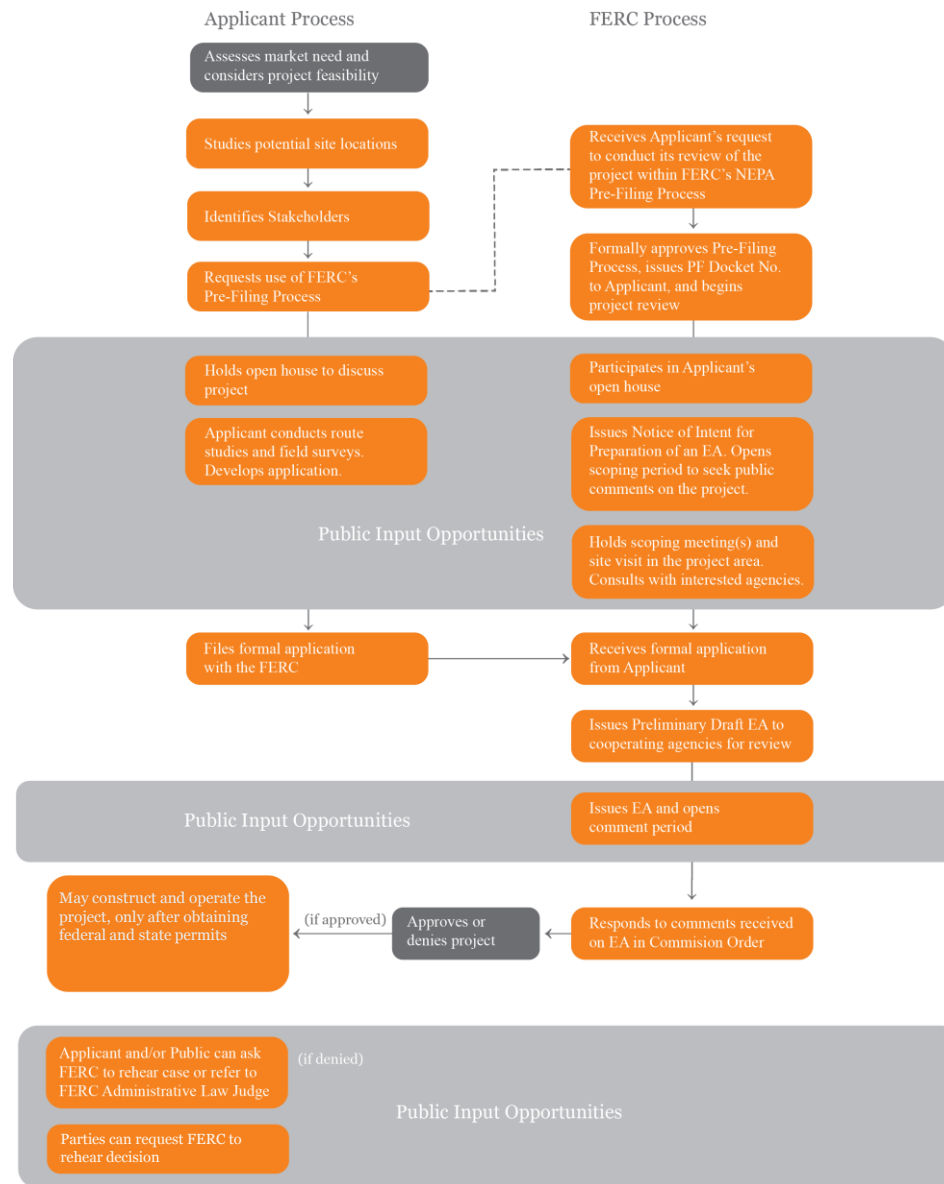


Project schedule

Deliverables	FERC Target Dates
<i>Survey permission letters sent to landowners</i>	<i>Jul 2016</i>
<i>FERC acceptance into pre-filing</i>	<i>Jul 22, 2016</i>
<i>Completed open season</i>	<i>Aug 2016</i>
<i>Submitted draft Resource Reports 1 and 10</i>	<i>Aug 22, 2016</i>
<i>Conducted five open houses</i>	<i>Aug 15-23, 2016</i>
<i>Submitted draft Resource Reports 1 – 12</i>	<i>Oct 28, 2016</i>
<i>FERC scoping sessions</i>	<i>Nov 14-16, 2016</i>
<i>File FERC certificate application and other Federal permit applications</i>	<i>Jan 26, 2017</i>
FERC issues Certificate	Dec 2017
FERC Notice to Proceed	Jan 2018
Construction start	Jan 2018
In-Service	Nov 1, 2018



FERC pre-filing environmental review process



Contact information

David Yonce, Director

Phone: (314) 499-5671

Email: David.Yonce@SpireEnergy.com

Website: SpireSTLPipeline.com

Address: 700 Market Street, Saint Louis, MO 63101