



2018 Investment in Infrastructure Expo

Bill J. Schnell, P.E.
Assistant District Engineer



St. Louis District

Transportation Gateway



Asset Management



10,400 Bridges



30,000+ miles

Asset Management



Signals



Message Boards
Intelligent Highway
Fibers



ADA / Sidewalks



I-44 Preservation Work

Callouts:

- Kingshighway, Thuman, Tower Groves - New Bridges
- UPRR, Vandeventer, Tower Groves - Rehab Bridges
- Replace Pedestrian Bridge
- Lane Closures, Ramp and Cross Street Closures
- Poplar Street Bridge Widening and New Surface
- Jefferson Bridge Replacement
- New Bridge Deck Surface and Pavement
- I-44 Over BNSF Bridge Replacement
- Resurfacing

141 HOV 3 44 HOV 2

Design Build

Goal Driven Projects

There are six goals for the project, in order of importance:

1. Deliver the project within the program budget of **\$25 million**.
2. Maximize mobility on 141 and improve efficiency @ I-44 interchange & Vance Road
3. Deliver the project in a manner which demonstrates the importance of safety.
4. Provide quality project with a long-lasting facility that minimizes future maintenance.
5. Deliver the project using a diverse workforce.
6. Complete the project by **July 15, 2018**.

141 HOV 3 44 HOV 2

Design Build

INTERCHANGE

ROUTE 141 AND I-44

Design Build Project

Poplar Street Bridge

Poplar Street Bridge

Congestion

Condition

Safety

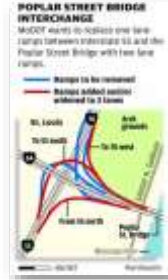
Poplar Street Bridge

Poplar Street Bridge Deck

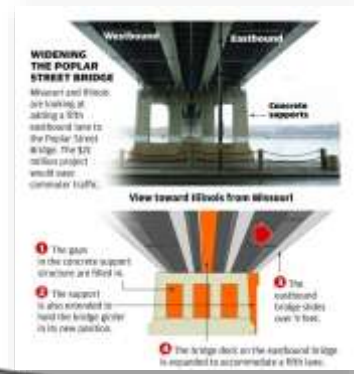


New Concrete Deck

Poplar Street Bridge Ramps



Poplar Street Bridge



Poplar Street Widening ...the Slide



\$69.3 M
Open Late 2018
Summer 2019 Completion



47 THE NEW ROUTE 47 BRIDGE
WASHINGTON, MO



I-270 NORTH
Build. Progress. Together.



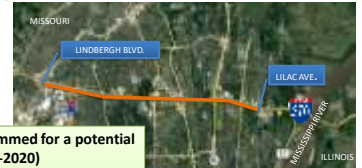
- Condition
 - Safety
 - Traffic
 - Congestion



I-270 NORTH
Build. Progress. Together.



I-270 NORTH
Build. Progress. Together.



- \$150 mil is funded programmed for a potential design build project (2019-2020)
- Estimated Construction Cost - \$ 500 - \$700 mil (unfunded balance)
- Construction duration - 17 years
- 10 – 15 separate contracts



Chain of Rocks Bridge



- Estimated construction cost: \$215 mil (unfunded)
- MoDOT / IDOT Split Funding 50/50
- If funded, construction could start as early as 2020



Business with MoDOT



- www.modot.org
- STIP – MoDOT Statewide
- TIP – St. Louis District EWGCG



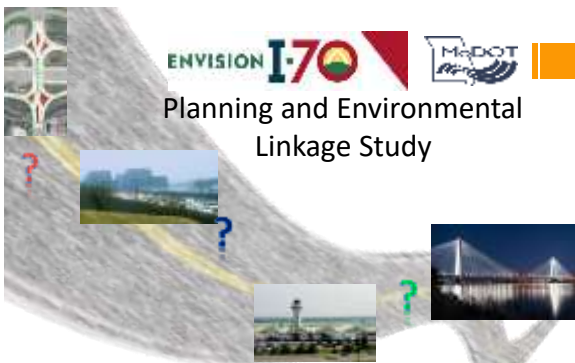
24/7 Information



- <http://traveler.modot.org/map/>
- Traffic
- Cameras
- Work Zones
- Crashes
- Weather Conditions



ENVISION I-70 Planning and Environmental Linkage Study



ENVISION I-70 Planning and Environmental Linkage Study



ENVISION I-70
 MISSOURI'S FUTURE HIGHWAY
 YOUR OPINION COUNTS!
 Respond to our survey to help us understand how we can better serve you.
 Survey open to the public through 3/31/18. Respond by 2/28/18.

2/28/2018

TOGETHER TOWARD ZERO
 Missouri's goal is to eliminate traffic fatalities and serious injuries on its roads.

2/28/2018

Safety

Missouri Fatalities Involving	2012-2014
Run off the Road	1,118
Unrestrained Occupants Killed	1,057
Horizontal Curves	798
Alcohol / Drugs	688
Aggressive Driving	559
Work Zones	26
Bicyclist Killed	14

Safety Treatments

Chevrons **Rumbles**

High Friction Surface Treatment

Safety Design-Build

2017 National Best Practice
 USDOT / FHWA / National Roadway Safety Foundation

