



CITY OF SAINT LOUIS BOARD OF PUBLIC SERVICE



John P. Kohler, P.E.
Planning & Programming
Manager





CAPITAL IMPROVEMENT PROJECTS CITY OF SAINT LOUIS



Roadway and Other Improvement Projects

- Tower Grove Park Neighborhood Access Improvements
- Hall Street Reconstruction (East Grand to Adelaide)
- Dr. Martin Luther King Lighting and Signal Interconnect (Newstead to Vandeventer)
- Louisiana Calm Street (Meramec to Gravois)
- National Geospatial Agency Improvements
- 7th Street Improvements (Washington to Walnut)
- Forest Park Infrastructure Improvements

Bridge Improvement Projects

- Hamilton Bridge Over Metrolink
- Southwest and Columbia Bridge Reconstruction Project
- Compton Avenue Bridge Reconstruction Project

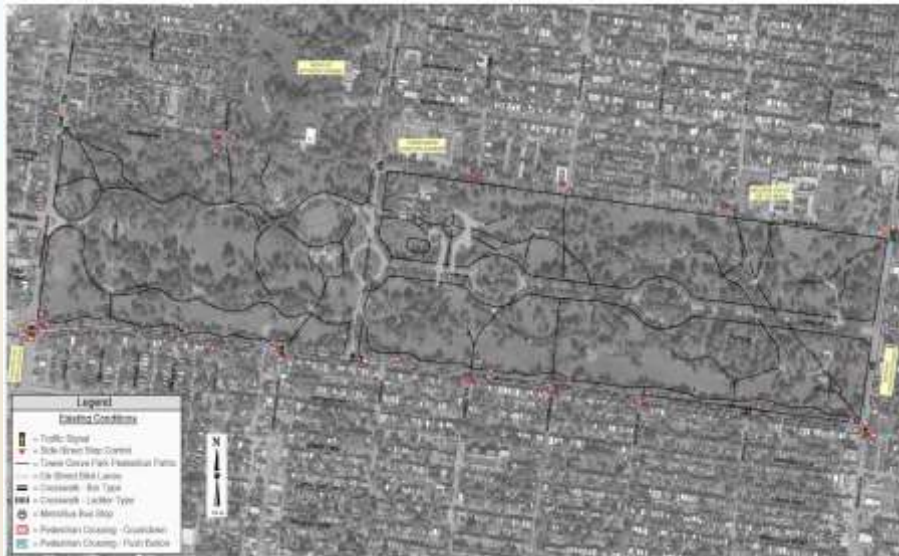
FUNDING SOURCES

- Transportation Improvement Program
Federal Funding: STP-S, CMAQ, TAP
- General Obligation Bonds
- ½ Cent Ward Capital Funding
- Private Sources

Tower Grove Park Neighborhood Access Improvements

Estimated Const. Cost \$1.25M; Construction Start: 2019

- ADA Upgrades and enhanced crosswalks at all entrances into the Park
- MetroBus Enhancements
- Signal Improvements



Hall Street Reconstruction – East Grand to Adelaide

Estimated Construction Cost \$3.8 M; Construction Start 2019

- Full Road Reconstruction
- Drainage Improvements - Bioswales
- Lane Modifications
- Pedestrian and Bicycle Improvements



SUBSET A-1: Illustrative Map
For Application 1802903 - City of St. Louis
Hall Street Reconstruction - Phase 1 Page 5

Dr. Martin Luther King Drive Lighting and Signal Interconnect – Newstead to Vandeventer



- Estimated Construction Cost \$1.8M
Anticipated Construction Start 2019
- Roadway and Pedestrian Lighting
 - Traffic Signal Equipment Upgrades and Signal Interconnection



Louisiana Calm Street – Meramec Street to Gravois Avenue

Estimated Construction Cost \$1.0 M; Anticipated Construction 2020

- Traffic Calming Measures:
 - Speed Humps, Traffic Circles, Bumpouts,
 - Enhanced Crosswalks, Branding and Wayfinding
- Asphalt Paving



National Geospatial Agency Improvements

NGA Development 2020 – 2023
Construction of Offsite
Improvements to Support NGA

- Full Interchange at I-64 and Jefferson
- N. Jefferson Improvements
- Cass Improvements
- On-site improvements
Administered by Army Corps
of Engineers
- Off-site improvements
Administered by SLDC/BPS



7th Street Improvements Washington Avenue to Walnut Street



Estimated Construction Cost \$3.0M

Anticipated Construction 2020

- Bumpouts and Sidewalk Reconstruction
- Roadway and Pedestrian Lighting
- Traffic Signal Improvements
- Landscaping and Streetscape Amenities
- Transit and Bicycling Improvements



Forest Park: Boeing Aviation Fields Upgrades and Streetscape Improvements



Estimated Construction Cost -
\$3.1M

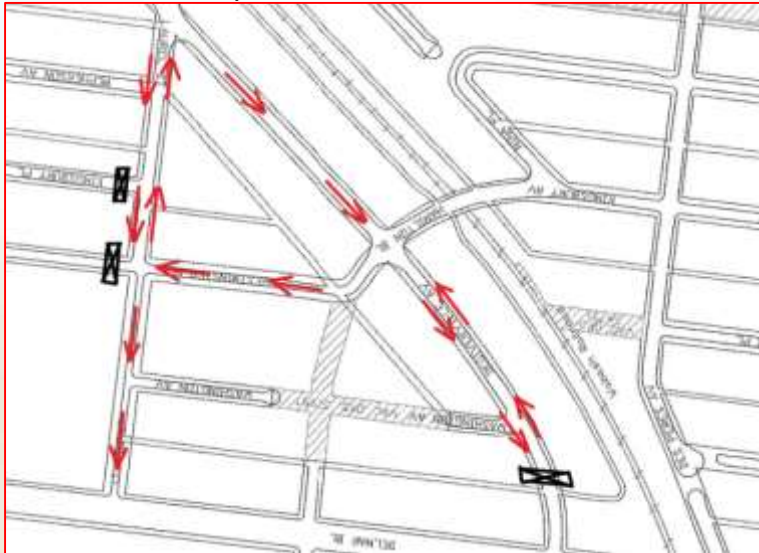
Anticipated Construction -
Fall, 2018

- New and upgraded athletic field lighting and irrigation
- Concession Plaza Improvements: Pedestrian and Drainage
- Stable Road Improvements: Curb and Parking
- Clayton Road Improvements: Pedestrian and Traffic Calming
- Reconstruct athletic field access road

Hamilton Bridge Reconstruction Over Metrolink - Nina to Degiverville

Estimated Construction Cost \$2.0 M

Anticipated Construction 2020



Southwest and Columbia Bridge Reconstruction

Estimated Construction Cost \$10M

Anticipated Construction 2021

- Demolish 2 bridges, construct 1 new bridge
- Increase railroad clearance from 17' to 22.5'
- Pedestrian Improvements



Compton Bridge Reconstruction – Chouteau to Spruce



Estimated Construction Cost \$12 M

Anticipated Construction 2022

- Shorten Bridge from 1350' to 450' with MSE walls
- Lane Modifications – 2 northbound, 1 southbound
- Separated Bike Facilities and Pedestrian Upgrades



City of St. Louis Bidding Procedures and Special Requirements

How to find out about City of St. Louis Public Works Projects:

- Advertised in Post-Dispatch, St. Louis American
- Bidding Documents distributed to MOKAN
- Project Plans, Specs, and Addenda found on BPS website
www.stl-bps.org
- Purchase plans/specs directly through the BPS website from INDOX Services

Disadvantaged Business Enterprise (DBE)
Minority Business Enterprise (MBE)
Woman Business Enterprise (WBE)

Federally-Funded Projects are required to meet DBE goals

- MoDOT sets these goals and are typically 10%-20% DBE, depending on project scope
- Most projects identified in this presentation are federally-funded and will be required to meet DBE goals established by MoDOT

City-Funded Projects are required to meet Mayor's Executive Goals

- 25% MBE
- 5% WBE



Thank You

John Kohler, P.E.
Planning and Programming
Manager
Board of Public Service
314-589-6623
Kohlerj@stlouis-mo.gov

