

November/December

Volume 2019 Issue 6



## Inside This Issue:

Board of Directors Election Results	2
Terry's Tidbits	3
Legislative Report	4
Road Work Planned	6
Task Force on Construction Permitting	8
Labor Report	10
From the Safety Side	11
On the Back Cover: Calendar of Upcoming Events	

# YES Community Project



The Young Executives of SITE (YES) has developed into one of the strongest components of SITE Improvement Association. The group is over 80 members strong, hosts an annual Claybird Shoot, a few networking events every year, and a Legislative Field Trip to Jefferson City this year. In addition, YES has been pursuing a Community Service Project for quite some time. This project began to take shape during this year's Legislative Field Trip when a conversation between Chris Davis, Chris West, and State Senator Brian Williams yielded a park renovation project in North St. Louis County. With the input of Senator Williams, YES leadership identified a park, Short Park, that straddles the North border of Kinloch and the South border of Berkeley.

With the support of the Board of Directors of SITE, YES utilized the SITE Holiday Happy Hour to raise funds for the project. Hoping to raise \$25,000 for the purchase of new playground equipment, YES Chairman Chris West made a presentation and SITE Board Member Jaime Chier made an impassioned plea to the membership to donate to the project. As a result, YES successfully obtained donations or commitments for nearly \$20,000. This included one anonymous donation of \$12,500. An extremely generous SITE member literally asked "How much do you need?" Following a couple of short conversations, the individual generously committed the \$12,500.

YES expects an exciting late March or early April ribbon cutting and Grand Opening. Should you still wish to contribute to the project, please call the SITE office, or send a check to SITE Advancement Foundation, referencing the Short Park Project. Contributions over \$250 will be recognized. All contributions are tax deductible to the extent provided by law.

# ***Board of Directors Election Results***

The SITE Improvement Association and SITE Advancement Foundation (SAF) boards of directors will have two new faces on them when the 2020 year starts. Recently elected to the Board for two-year terms are:

Tom Kelpé, president of Kelpé Contracting, Inc.

Chris O'Hagan, principle at JD Kutter

We welcome them to the board. They will join six other incumbents reelected to serve.

<u>Division</u>	<u>Candidate to Board</u>
Asphalt	Joe Leritz, Leritz Contracting
Concrete	Pat Moriarity, Concrete Strategies
Earthmoving	Mike Steiniger, Kuesel Excavating
Highway	Chris Gottman, Millstone Weber
Landscaping	Steve Roden, Roden's Landscaping
Sewer Utility	Tom Kelpé, Kelpé Contracting
Specialty	Jaime Chier, Premier Demolition
Associates	Chris O'Hagan, J.D. Kutter

## **SITE'S 2020 MEMBERSHIP DUES**

Invoices for 2020 Membership Dues have been mailed. If you have any questions regarding your 2020 Membership Dues, please email Leah at [leah@sitestl.org](mailto:leah@sitestl.org) or call SITE's office at (314) 966-2950. Dues can be paid via credit card or check.

**A strong membership means success for your Association.**

**Thank you for your continued support.**



## **FIRST GENERAL MEMBERSHIP MEETING OF 2020**

The first general membership meeting of 2020 will be held on Wednesday, January 8 at Syberg's Dorsett. Cost is \$30 per person to attend. Information on the program will be available as the date gets closer. To register, please email [leah@sitestl.org](mailto:leah@sitestl.org).



## **Holiday Reminder!**

*SITE's office will be closed:*

*Tuesday & Wednesday, December 24-25, in observance of Christmas*

*Wednesday, January 1, in observance of New Year's Day*



## ***Terry's Tidbits***

**By: Terry Briggs**

**Executive Director of SITE Improvement Association**

It was good to see everyone who attended the Holiday Happy Hour recently at Bogey Hills CC. The new format we have for the holiday get together—hors d'oeuvres and drinks—seems to attract more people now days. I can remember when SITE used to have a Christmas party with dinner and dancing; we even had a few of these at Bogey Hills, but attendance started dropping off. Using this format seems to fit into everyone's schedule a little better.

In the event you couldn't attend the Holiday Happy Hour, I would encourage you to support the Young Executives of SITE (YES) committee fundraising efforts to revamp a playground in a park that straddles the Berkley/Kinloch boundary line in north St. Louis County. The YES members initiated the effort to buy new equipment for the playground, resurface the basketball court, add a small pavilion, and landscape the area.

Neither city has the funds to fix the park and it is located in an area where young families are trying to bring the neighborhood back. The Eastern Missouri Laborers District Council LECET program has agreed to fund and install the small pavilion. In the spirit of giving, YES is asking for monetary donations to purchase playground equipment. No donation is too large or too small. Please contact the office for more details and to make a pledge for this worthwhile cause.

I am pleased to see MoDOT getting some of its larger projects started, i.e. the I-270 repairs and the Blanchette Bridge on I-70 work. I especially liked seeing a SITE member, Millstone-Weber, win the I-270 job. What concerns me, though, when you hear about these projects starting up is the public's understanding of how these projects get funded. MoDOT and state officials have stressed repeatedly the agency needs more funding, and yet here is MoDOT allocating more than \$300 million worth of work on just two projects!

The general public does not understand that funding for these projects and others were agreed to



years ago in the state's transportation improvement program (STIP). All the traveling public sees and hears is MoDOT doing another major highway project at a time when the department claims it is broke. The signals seem to be crossed and we, the construction industry, state officials and MoDOT representatives, need to develop a better way of communicating how this system of funding works. Otherwise we will continue struggling to secure additional funding for transportation needs in Missouri.

Our condolences to Jeff & Stacey Budrovich on the death of their son, Justin. Please keep them in your prayers.

As we close out another year, I just want to thank the SITE Board of Directors and membership for the year your association just had. We have increased membership to record levels, thanks in part to you all spreading the word about the association and the benefits it brings to members. SITE's staff started new programs and continued the existing ones that work so well providing service to you.

I hope your company had as good a year as your association is having and wish all of you a Merry Christmas and a Happy and Healthy New Year.





# Legislative Report

By Chris Davis



## SITE IMPROVEMENT ASSOCIATION INITIATES LEGISLATION TO ADDRESS SIGNIFICANT EXCAVATION ISSUES

SITE Improvement Association plans next month to introduce legislation that would fine and penalize underground utility owners for failure to locate and mark underground facilities when requested. Currently, if an excavation contractor notifies Missouri One-Call of intent to excavate and requests a locate, any and all underground utility owners that own infrastructure in the designated territory have that calendar day plus 48 hours to identify and mark the location of their utility infrastructure. If underground facilities are not located at that time, the individual intending to excavate must call and provide second notice. Then, the underground utility owner has two hours to comply and locate the underground infrastructure. If this two hour requirement is not met, the excavator may use care and discretion and commence excavation.

Due to the dangerous nature of excavation, many contractors wisely choose to wait. However, as we all know, time means money. Oftentimes, contractors have equipment and personnel at the site, prepared to work. This means production costs are growing; rents and wages are being paid, etc.

Previously, a SITE contractor has sued a utility in an effort to recoup those costs. The court ruled in favor of the contractor. However, the contractor paid twice the cost in legal bills as was recouped in lost costs from the utility.

Therefore, SITE has initiated legislation to codify the results of this lawsuit, to more easily enable a delayed and aggrieved excavation contractor to receive compensation for lost time and costs from the utility for failure to locate underground facilities under the law.

The legislation would fine the utility not less than \$500 but not more than \$5,000 per violation, per day. The fine would be due to the delayed contractor for documented losses.

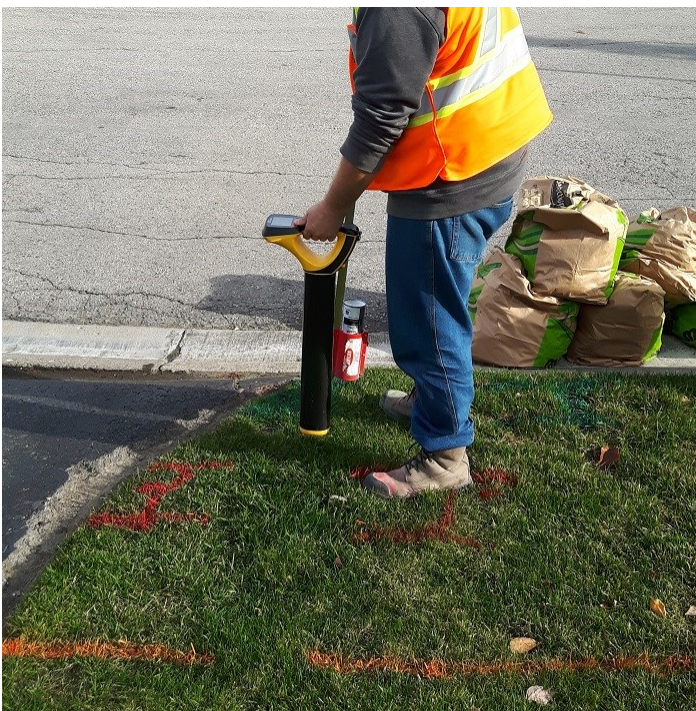
In addition, SITE will again be enthusiastically endorsing two legislative initiatives of MODOT.

The first initiative is a ban on handheld cell phone devices while operating a motor vehicle. Missouri is one of a select few states that have yet to ban handheld cell phones. This common sense measure is a serious public safety issues, in particular for SITE member crews performing construction on Missouri roadways.

The second MODOT initiative was also introduced last year and supported by SITE. This initiative would change the manner in which vehicle registrations are charged in Missouri. Currently vehicles are charged registration fees based on the horsepower of the vehicle. This practice is antiquated and has been abandoned by nearly all other states. MODOT proposes to instead initiate a vehicle registration fee based on a vehicle's miles per gallon, efficiency rating. This method would, over time, better collect appropriate roadway user fees from electric and hybrid vehicles that pay little in motor fuel taxes but use the roadways, nevertheless. This initiative will "stop the bleeding" of lower fuel consumption.

## SITE JOINS PUBLIC POLICY COUNCIL of STATEWIDE INFRASTRUCTURE COALITION

SITE Government Affairs Director Chris Davis was recently appointed to the Public Policy Council of the Missourians for Transportation Infrastructure (MFTI), formerly known as the Mercury Alliance. SITE was widely recognized for its leadership efforts on Proposi-



tion D, the 2018 statewide ballot initiative to raise the Motor Fuel Tax. As a result, SITE was recruited to continue its leadership in infrastructure funding via the MFTI Public Policy Council.

The Committee met in October to develop its 2020 Policy Agenda. After extensive strategic discussions, members of the Policy Council recommended the following transportation investment priorities for the 2020 legislative session.

- Increasing the state motor fuel tax as much as possible under the limits of the Hancock Amendment and indexing the state motor fuel tax, with the increased revenue dedicated to transportation investment.
- Enacting legislation to capture a state sales/use tax on internet sales and making transportation investment the top priority for revenue generated by this tax.
- Changing motor vehicle registration fees from a horsepower standard to a miles-per-gallon standard, increasing electric/hybrid motor vehicle registration fees, and indexing all motor vehicle registration fees,

with the increased revenue dedicated to transportation investment. (MODOT Initiative)

- Indexing drivers' license fees, with the increased revenue dedicated to transportation investment.
- Enacting legislation authorizing public-private partnerships for transportation investment and repealing the prohibition on tolling.



*Photo courtesy of MoDOT.*

## PREVAILING WAGE REPORTS

Missouri contractors have until January 31, 2020, to submit their prevailing wage reports to establish the Annual Wage rate for the state. Reports can be submitted on both public and private work, even though the prevailing wage only covers publicly funded construction.

Contractors are voluntarily asked to submit the total package (wages plus benefits) paid to their journeymen workers for 2019. The hours for apprentices and seasonal workers are not included in the calculations. All total package hours submitted are added together and then divided by the hours to set the prevailing wage. For example:

300 hours at \$30 per hour =	\$ 9,000
250 hours at \$ 40 per hour =	\$10,000
<u>150 hours at \$25 per hour =</u>	<u>\$ 3,750</u>
Total 700 hours	\$22,750

$\$22,750 / 700 = \$32.50$  This would be the prevailing wage rate.

Missouri's Prevailing Wage Law exempts projects with a project cost of \$75,000 or less. Examples of public works projects include bridges, roads and government buildings. The Prevailing Wage Law applies to all public works projects constructed by or on behalf of state and local public bodies.

The prevailing wage rate is the minimum wage rate required to be paid on a public project. Employees are free to bargain for a higher rate of pay. Employers are free to pay a higher rate of pay. The prevailing wage rate differs by county and for different types of work.

**Don't forget to send in those wage rates by January 31, 2020!**





# Road Work Planned



## I-270 ROAD IMPROVEMENTS ARE PLANNED

By this time next year, work may be underway on improvements to Interstate Highway 270 in north St. Louis County. Missouri Highway Commission [At its November meeting.] approved entering into a design build contract with the joint venture of Millstone-Weber (a SITE member) and Parsons Transportation Group. Pace Construction Company (a SITE member), is also involved with this team in building the project

The \$278 million project will improve the interstate highway from Lindbergh Boulevard east to Highway 367 (the Alton Road). "This is the single-largest project MoDOT has let in the past decade," said MoDOT Director Patrick McKenna. "It will replace aging infrastructure, enhance safety and resiliency of the system, and improve mobility for freight and passengers."

Proposed work includes rebuilding the bridges and interchanges at ten locations, adding an additional lane, both east and west bound, from Highway 367 to Lindbergh Boulevard, and making the outer roads on both sides of the highway one-way corridors. I-270 will remain open during the proposed three-year construction period, adding another level of complexity to the job. This section of I-270 has an average of 140,000 vehicles a day traveling on it.

## BLANCHETTE BRIDGE WORK IS SCHEDULED

Get ready for another round of potential highway detours and delays on the Blanchette Bridge, carrying Interstate Highway 70 across the Missouri River. MoDOT anticipates starting rehabilitation work on the eastbound lanes of the bridge beginning in March 2020.

Unlike the last time the highway department worked on the bridge—when it completely shut down the west bound lanes, tore-out and replaced the bridge deck—this proposed project will only require some of the east-bound lanes to be closed. That will still create some traffic problems. Two lanes of the west-bound section of the bridge will be converted to east-bound traffic to accommodate travel. The Fifth Street and Convention Center entrance ramps onto east-bound I-70 will be closed to traffic during the construction.

The work involves replacing expansion joints on the bridge deck, repairing some of the steel structure, sealing the deck, and a complete repainting of the bridge, including removing the old paint.

The estimated \$30 million project is expected to start in March 2020 and end by the fall of 2020.

So, if you use the Blanchette Bridge on a daily basis, you may want to think about traveling some alternate routes to avoid long traffic delays.





# CONTRACTOR MEMBERS

## Concrete Division

Alfred F. Mullen Concrete Contracting Co.	Mike Mullen	(314) 966-0177
Birkemeier Construction, Inc.	Jeff Birkemeier	(636) 978-8892
Boling Concrete Construction	Cindy Boling	(314) 772-6300
Bumb Construction, Inc.	Dave Bumb	(314) 291-4284
Byrne & Jones Concrete	Carl Rouse	(314) 567-7997
Concrete Strategies, LLC	Joe Vitale	(314) 592-2153
E. Meier Contracting, Inc.	Rod Fain	(636) 300-0908
Fenix Construction Company	Steve Ladenberger	(314) 892-4700
Hawkins Construction and Flat Work LLC	Bob Hawkins	(636) 409-1115
Hoette Concrete Construction Co.	John Hoette	(314) 895-5000
J.S. Aubuchon Concrete Company	Jerry Aubuchon	(636) 661-5655
Joint Sealing Solutions	Blake Gamber	(314) 229-1460
Karrenbrock Construction, Inc.	Roger Karrenbrock	(636) 828-5420
Musselman & Hall Contractors, LLC	Keith Ahal	(314) 739-1142
Oreo & Botta Concrete Company	Tom Milne	(314) 427-3800
R. V. Wagner, Inc.	Dan Wagner	(314) 892-1600
Scharf Construction Co., LLC	Rick Scharf	(314) 869-0060
Spencer Contracting Company	Tim Spencer	(314) 843-5166
Vee-Jay Cement Contracting Company, Inc.	Sam Vitale	(314) 351-3366

## Earthmoving Division

Ballmann Earthworks, LLC	Jon Ballmann	(636) 236-4242
Bloomsdale Excavating Co., Inc.	Scott Drury	(573) 483-2564
Brandt Contracting, Inc.	Sedrick Brandt	(636) 352-4818
Budrovich Excavating & Contracting	Jeff Budrovich	(314) 892-3030
Busken Construction Company	David Busken	(314) 630-8866
Edwards-Kamadulski, LLC	Kevin Edwards	(314) 329-3624
Interstate Trenching & Excavating	Steve Lawrence	(636) 387-7700
Jones Grading & Excavating, Inc.	Noel Jones	(314) 647-1697
K. J. Unnerstall Construction Company	Kurt Unnerstall	(636) 239-2028
Kendall's Hauling	Kendall Davidson	(314) 517-0905
Kuesel Excavating Co., Inc.	Mike Steiniger	(636) 978-3478
McFry Excavating, Inc.	Doug Pavis	(636) 386-4779
Nor-Vel Grading & Excavating, LLC	Matt Beckmann	(636) 387-1888
Plattin Creek Excavating, LLC	Mike Harman	(314) 267-7650
R & K Excavation, Inc.	Kyle Faulkner	(636) 937-1268
Rich Gullet & Sons, Inc.	Randy Gullet	(636) 271-2327
Sellenriek Grading Company, Inc.	Drew Sellenriek	(636) 938-9299
Semke Grading & PipeWorks, Inc.	Brenda Semke	(636) 250-4225
Town & Country Grading, Inc.	Alan Laughlin	(636) 475-7887

## Highway/Bridge Division

AMCON Municipal Concrete, LLC	Gary Amelong	(636) 379-9396
Gershenson Construction Co., Inc.	Ed Gershenson	(636) 938-9595
J.M. Marschuetz Construction Company	Denny Marschuetz	(636) 938-3600
Krupp Construction, Inc.	John Meiner	(636) 391-8844
M & H Concrete Contractors, Inc.	Mark Rubinstein	(636) 379-9682
Millstone Weber, LLC	Thom Kuhn	(636) 949-0038
N.B. West Contracting Company, Inc.	Jim Fitzgerald	(314) 962-3145
Pace Construction Company	Phil Hoher	(314) 524-7223
Pavement Solutions, LLC	Matt St. John	(636) 970-2727
Zoie, LLC	Dana Howard	(618) 857-8444

## Asphalt Paving Division

Accurate Asphalt Paving Co., Inc.	Dan Lucas	(636) 343-5199
Byrne & Jones Construction	Brian Goggins	(314) 567-7997
Diversified Contractors	Brad Laramie	(314) 638-2500
Ford Asphalt Company, Inc.	Brad Fritsche	(314) 291-2600
Jokerst Paving & Contracting	Grant Jokerst	(636) 937-7101
L. Keeley Construction	Matt Taylor	(314) 421-5933
Leritz Contracting, Inc./Busy Bee Paving, Inc.	Joe Leritz	(314) 821-2615
Topps Paving & Drainage LLC	Allen Baldwin	(314) 333-4444

## Landscaping Division

A. Waldbart & Sons Nursery	Jay Behle	(314) 895-4589
Baxter Farms & Nurseries	Gary Hente	(314) 542-9400
Chesterfield Irrigation Co.	Dave Horwitz	(636) 537-9795
Conoyer Brothers Landscaping, Inc.	Craig Conoyer	(636) 397-7217
DJM Ecological Services, Inc.	Doug Bauer	(314) 478-2388
ECO Constructors	Shawn Garland	(636) 561-3158
Greenspace Landscaping	Stephen Kelly	(314) 895-8860
Keeven Brothers Landscaping, Inc.	Mike Keeven	(314) 837-6948
LanDesign, LLC	George Tucker, Jr.	(636) 332-4500
Midwest Turf Contractors	Charity Keeven	(636) 926-9988
Professional Irrigation Systems	Jon Lauer	(636) 695-7800
Roden's Landscaping, Inc.	Steve Roden	(636) 561-3947
ROSCH Midwest, LLC	Scott Rozier	(636) 519-7770
Schaefer-Meyer Seed-Sod Div. 1, Inc.	Greg Meyer	(636) 947-7173
Site System Landscaping, LLC	Kathy Roden	(636) 332-7333
TerraScape Landscape Constructors	Eric Hogan	(314) 581-8576

## Sewer/Utility Division

Aztec Construction Specialties, LLC	Hector Maldonado	(618) 223-9936
Bates Utility Company, Inc.	Tim Bates	(636) 939-5628
Bi-State Utilities Company	Mike Jerome	(314) 209-0202
C.E. Bollmeier Co., Inc.	Bill Bollmeier	(314) 298-7885
Castle Contracting, LLC	Aaron Retherford	(314) 421-0042
David Mason + Associates	Spencer Mason	(314) 534-1030
Fred M. Luth & Sons, Inc.	Bill Luth	(314) 771-3892
Girdner Contracting LLC	Bridget Girdner	(314) 605-4301
J & J Boring, Inc.	Jennifer Bourquet	(636) 566-6766
J.H. Berra Construction Company, Inc.	Frank Berra	(314) 487-5617
J.W. Bommarito Construction Co., Inc.	Joe W. Bommarito	(314) 353-0104
Karrenbrock Excavating LLC	Doug Bierman	(636) 828-5420
Kelpe Contracting, Inc.	Tom Kelpe	(636) 458-1400
Luther's Supply, LLC	Amber Boykins	(314) 385-6499
Poeling Construction	Shane Poeling	(636) 463-2437
S & S Utility Contracting Company, Inc.	A.J. Kochanski	(636) 463-2441
SAK Construction	Jerry Shaw	(636) 379-2350
Semke Pipe Works, Inc.	Brenda Semke	(636) 250-4225
TaylorMade Construction, LLC	Andre Taylor	(314) 868-1005
Unnerstall Contracting Company, LLC	Steve Unnerstall	(636) 257-3003
Williams Tunnelling Industries, Inc.	Edison Williams	(832) 889-1468
XL Contracting, Inc.	Ken Novel	(636) 970-2710

## Specialty Division

AgriCycle, Inc.	Patrick Geraty	(636) 861-3344
All Star Concrete Pumping	Keith Dennis	(636) 475-9539
A-Plus Contractors, LLC	Will Sanders	(636) 498-1790
Badger Daylighting Corporation	Benji Koonce	(314) 954-7192
Collins & Hermann, Inc.	Mike Shepard	(314) 869-8000
Drainscapes	Casey Graves	(314) 892-9888
Drilling Service Company	Sean Jackson	(314) 291-1111
Fick Supply Service, Inc.	Dave Fick	(314) 560-0146
George McDonnell & Sons Tuckpointing Co., Inc.	Tom McDonnell	(314) 739-0468
GS Grinding Services, LLC	Dave Grimes	(636) 474-1183
Hansen's Tree Service & Environmental Resources	Ken Byrne	(636) 379-1830
Ideal Landscape Group	Dave Buckel	(314) 892-9500
J&R Concrete Services, LLC	Stephanie Johnson	(314) 596-2311
Kurtz Nursery and Topsoil	Matthew Kurtz	(636) 405-2667
McConnell & Associates Corporation	Greg Lucas	(314) 962-1920
Native Landscape Solutions, Inc.	Chuck Caverly	(314) 544-7918
Premier Demolition, Inc.	Bill Buell	(314) 645-5566
Reinhold Electric, Inc.	Jerry Reinhold	(314) 631-1158
Retaining Wall Solutions	Michael Yount	(314) 842-8200
Soil Installers	Brent Kerns	(618) 235-5595
Supplied Industrial Solutions	Stephen Brock	(618) 452-8151
Thomas Industrial Coatings, Inc.	Don Thomas	(636) 475-3500
Traffic Control Company	Joe Backer	(636) 225-7800
TraMar Contracting, Inc.	Peggy McGrath	(636) 255-0808
Two Alpha Contracting, LLC	Rhiannon Parisi	(636) 384-1296

# November/December



# ASSOCIATE MEMBERS

1st Advantage Bank	Greg Smith	(636) 970-0440	Luby Shoring Services, LLC	Stephen Luby	(636) 660-7467
24/7 OnSite Cameras	Nick Bartolotta	(314) 718-0453	Magruder Limestone Company, Inc.	Jacob Fortner	(636) 528-4180
Acuity Insurance	AJ Gajdosik	(636) 287-2068	Mannino Truck Leasing, Inc.	Joe Mannino	(314) 393-0715
Advanced Drainage Systems	Brian Snelson	(618) 593-6135	MayeCreate, LLC	Stacy Brockmeier	(573) 447-1836
Agilis Systems	Sean Gaffney	(314) 732-4925	Middendorf, Inc.	Allan Middendorf	(618) 540-8446
American Steel Fabrication, Inc.	Tim Thomas	(636) 475-7272	Mississippi Valley Equipment Company	Bob Clapsaddle	(314) 869-8600
ASP Enterprises, Inc.	Don Thieman	(636) 343-4357	Missouri Petroleum Products Company	Mike Hartman	(314) 219-7305
Auburn Park Landscape Architecture LLC	Christa Taylor	(636) 891-2125	Mueller Prost LC	Bengi Bala	(314 ) 862-2070
Audio Video Concepts	Rob Roessler	(618) 281-4164	Neenah Foundry Company	Brandon Ostendorf	(636) 928-1023
Bank of Springfield (BOS Bank)	Marty McCabe	(314) 888-6906	Northwestern Mutual	Zach Nannini	(636) 578-6677
BITCO Insurance Companies	Chris Demse	(314) 822-4446	Nu Way Concrete Forms, Inc.	Dave Pazdernik	(314) 544-1214
Bobcat of St. Louis	Mike Allen	(636) 225-2900	OnSite Companies	Aaron Jackstadt	(636) 519-0507
Bussen Quarries, Inc.	Mark Bussen	(314) 894-8777	Pat Kelly Equipment Company, Inc.	Brian Kelly	(314) 895-9500
CarsonAllaria Wealth Management	Joe Allaria	(618) 288-9505	Peoples Savings Bank	Don Meyer	(636) 398-5600
Carter-Waters LLC	Ray Hillmann	(636) 940-0001	Providence Bank	Nick Brunnworth	(636) 397-3804
Central Stone Company	Jeff Pullen	(314) 830-9000	Purple Wave Auction	Scott Broz	(636) 725-6737
Champion Precast, Inc.	Joel Anderson	(573) 384-5855	R. Barr Consulting LLC	Rich Barr	(314) 692-8888
CMIT Solutions	Barry Herring	(636) 925-9920	Rackers & Fernandez, LLC	Sergio Fernandez	(636) 498-1900
CMW Equipment	Larry Glynn	(314) 993-1336	Republic Services, Inc.	Jerry Ballard	(636) 947-5959
Contech Engineered Solutions, LLC	Mike Hill	(573) 380-0719	Risk Consulting Partners	Warren Dunnegan	(314) 449-8181
Core & Main	Randy Bradley	(314) 432-4750	Ritchie Bros. Auctioneers	Michael Juenger	(636) 751-8383
County Materials Corporation	Joel Gardner	(217) 544-4607	Rock Hill Quarries Co.	Bruce Dresser	(314) 968-2336
Craftsmen Utility Trailer	John Zehnder, Jr.	(636) 795-6350	Roland Machinery Company	James Jesuit	(314) 291-1330
Dan Althoff Trucking, Inc.	Dan Althoff	(636) 677-7772	RubinBrown LLP	Ken Van Bree	(314) 290-3429
David J. Peters Trucking, Inc.	Dave Peters	(314) 440-0255	Rudd Equipment Company	John Robinson	(314) 487-8925
Dewitt Insurance	Alex Toler	(314) 845-9120	Rush Truck Centers of Missouri, Inc.	Justin Demers	(314) 449-7200
Energy Petroleum Company	Steve Madras	(314) 383-3700	Safety Training Resources	Jeff Viehmann	(314) 808-3502
Enterprise Fleet Management	Kamil Koscik	(314) 889-8516	Sandberg, Phoenix & von Gontard, P.C.	Tony Soukenik	(314) 446-4279
Erb Equipment Company	Gregg Erb	(636) 349-0200	Schmersahl Treloar & Co.	Marianne Biangardi	(314) 966-2727
EquipmentShare	David Meyer	(636) 459-8640	SCI Engineering, Inc.	Karl Koenigsfeld	(636) 584-7991
Fabick CAT	Greg Durst	(636) 343-5900	Silver Eagle Construction Products, Inc.	Erik Thompson	(636) 240-6300
Federated Insurance	Cole Waddell	(316) 617-7880	Simpson Materials Company	Steve Simpson	(636) 343-4944
Fred Weber, Inc.	Jack Branz	(314) 344-0070	SITECH Midwest, LLC	John Simmons	(618) 314-8105
G.S. & S.	Chris Hyams	(314) 298-8100	SmithAmundsen LLC	Daniel Peters	(314) 719-3766
Gateway Dredging & Contracting, LLC	Terry Bangert	(636) 665-5180	St. Louis Composting	Roy Gross	(636) 861-3344
GenCon Safety Consulting, LLC	Joe Thornton	(636) 345-3883	Tensor International Corporation	Eric Nestel	(816) 516-7033
Hanes Geo Components	Steve Wright	(636) 875-7317	The Charles L. Crane Agency Company	Frank Rebholz III	(636) 537-5641
Hayden Machinery LLC	Jeremy Hancock	(314) 550-1400	The Clayton Engineering Company, Inc.	Steve Quigley	(314) 692-8888
Heritage Petroleum, LLC	Mike Mabrey	(314) 504-3198	Topcon Solutions	Craig Ferris	(314) 416-4970
Interstate Testing Services	Andy LaPlante	(314) 994-0641	United Rentals	Angie Wheeler	(314) 267-7621
J.D. Kutter	Brenda Mainer	(314) 444-4949	United Rentals -Trench Safety	James Dickey	(314) 729-0003
J.W. Terrill, Inc.	Pete Mohs	(314) 594-2700	Vanguard Truck Centers	Dan Green	(618) 857-7625
John J. Guilfooy & Associates, LLC	John Guilfooy	(314) 781-1122	Vermeer Midwest, Inc.	Chad Van Soelen	(636) 532-2332
K & K Supply Inc.	Matt Williams	(636) 349-1141	Wallis Lubricants, LLC	Kati Douglas	(636) 271-0900
K & P Precast, Inc.	Tammy Daugherty	(636) 978-3111	Warrenton Oil Company	David Baker	(636) 456-3346
Kienstra Co.	Ted Kienstra, Jr.	(314) 994-1616	Western Ready-Mix, Inc.	Mike Reed	(636) 519-1522
Kienstra Precast, LLC	Steve Peery	(618) 482-3283	Wieser Concrete Products, Inc.	Drew Wieser	(618) 251-9210
Kohrs Truck & Auto Repair, Inc.	Harold Kohrs	(636) 240-7935	Winter Brothers Material Company	Ryan Winter	(314) 843-1400
Lizmark Branded Solutions	Liz Tillman	(636) 938-5502	Workplace Synergy	Maureen Trompeter	(314) 473-4665
Lockton Companies	Zach Frey	(618) 975-7258	Xylem Dewatering Solutions Inc.	Michael Myers	(314) 900-3829
Luby Equipment Services	David Kedney	(636) 343-9970			

**MAKE SITE WORK FOR YOU**

Call on SITE members for the highest quality products and services

**November/December**





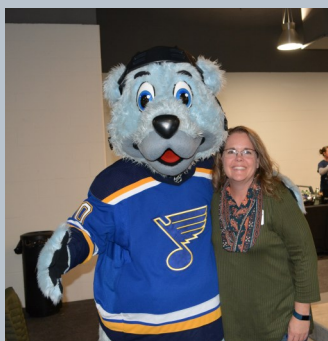
# INVESTMENT IN INFRASTRUCTURE 2020 EXPO

## Tuesday, February 25

[www.sitestl.org](http://www.sitestl.org) for more information or to purchase tickets

## November Networking Event

Members who attended the November Networking Event were treated to a behind-the-scenes tour of the new Centene Community Ice Center. The 277,000-square-foot facility features four ice rinks and is the official practice home of the St. Louis Blues. When not on the tour, attendees were able to watch some Blues alumni play a friendly game. Those who stuck around long enough were able to get photos with a special guest—Blues' Mascot Louie! Thanks to all who attended the event.



## TASK FORCE ON CONSTRUCTION PERMITTING BEGINS WORK IN ST. LOUIS COUNTY

St. Louis County government is working to develop a plan to streamline the permitting process for construction projects. County Executive Sam Page formed a task force of county, municipal, designers/architects and private construction interests to explore the possibility of establishing a “one-stop shop” for developers, contractors and individuals to obtain construction permits for work anywhere in the county.



Page created the group because he has heard—mainly from designers and architects—that St. Louis County is a hard place to work because of the multitude of municipal and special public entities that require review and permitting of construction. As an example, if a restaurateur wanted to build in a municipality in the county, the individual would have to get plans reviewed by the local municipality, the county, MSD (which handles sanitary and

stormwater services), the health department, the fire department and possibly MoDOT (if the location was on a state roadway). Then add to that the private entities of water, gas and electric, who require review of plans on connections to their service lines. That is almost ten reviews on one project!

The intent of the review is not to lessen requirements; rather it is to make it easier and quicker to get a project from design to construction and functioning. One of the ways to expedite work is to make sure the developer knows completely how the process works. Can all the reviewing bodies start their process at the same time, rather than wait for one review to finish before another can start? What happens when one reviewing agency returns the plans to the owner for modifications? Does that stop the whole process or can other entities continue their work?

These are a few of the questions being asked. Another critical component to the process would be the computer software necessary to track and keep a permit moving. Unless a system is developed that is compatible to all the entities, it would be difficult achieve such coordination.

The task force will continue meeting to try and develop a solution, but a question that lingers: is the permitting process really the reason more development is not starting in the region?

# Scholarship Opportunity!



Scholarship applications for high school seniors and/or college students are now available!! Applicants must be the child or step-child of a full-time employee or officer of a SITE contractor or associate member in good standing. Such employee or officer shall be employed at the employer's facility located within the St. Louis metropolitan area. Applications for scholarships and the 2020 Eligibility Rules & Application Process have been mailed and emailed to all member companies and are available at [www.sitestl.org](http://www.sitestl.org) on the front page listed under 2020 Scholarship Information. Contact Leah at (314) 966-2950 should you have any questions.



# 2019 Holiday Happy Hour

More than 130 members attended the gathering on December 5 at the beautiful Bogey Hills Country Club. At past holiday gatherings, SITE requested donated items to help benefit local charities in need. This year, things were a little different... The Young Executives of SITE (YES) are giving an existing North St. Louis County park a "SITE Improvement" makeover, and they need the help of SITE membership. Swings, teeter totters, picnic tables, and basketball hoops are just a few of the items needed for a great park.

In the spirit of giving, YES is asking for monetary donations to purchase playground equipment. No donation is too large or too small. Have a question? Contact SITE's office to see how you can help make this project a success.





# SITE APPRECIATES THE SUPPORT OF THESE COMPANIES



**Vermeer<sup>®</sup>**  
Midwest

**EQUIPPED TO  
DO MORE.™**

621 Spirit Valley East Dr.  
Chesterfield, MO 63005  
[vermeermidwest.com](http://vermeermidwest.com)

**Chad Van Soelen**  
General Manager

Office: (636) 532-2332  
Fax: (636) 532-8016  
Mobile: (314) 660-5192  
[chad.vansoelen@vermeermidwest.com](mailto:chad.vansoelen@vermeermidwest.com)



**KOHR'S**  
**TRUCK & AUTO REPAIR INC.**

[www.kohrstruck.com](http://www.kohrstruck.com)

**Kathy**

**636-240-7935 615 Arrow Ln O'Fallon, MO 63366**

Barrier  
Concrete  
Steel  
Temporary Traffic Control  
Full Service  
Rental  
Sales  
Pavement Marking  
Full Service  
Temporary  
Permanent  
Removals  
Marker Install  
Material Sales

**DBE CERTIFIED CONTRACTOR**  
3051 Merchantile Ind. Dr.  
St. Charles, MO 63301



**TRAMAR**  
**CONTRACTING, INC.**

636-255-0808  
fax 636-255-0719  
cell 314-852-5088



**Interstate**

Office: (636) 387-7700  
Fax: (636) 387-7702  
Cell: (314) 919-5499  
305 Depot St.  
St. Peters, MO 63376

**Steve Lawrence**  
Chief Operations Officer  
[steve@interstatestl.com](mailto:steve@interstatestl.com)

**J&R Concrete Services, LLC**  
**DBE & WBE Certified**

**Stephanie Johnson**  
President

840 Clark Avenue  
St. Louis, MO 63119  
(314) 596-2311  
[stephanie@jrconcreteservices.com](mailto:stephanie@jrconcreteservices.com)  
[www.jrconcreteservices.com](http://www.jrconcreteservices.com)



**JR &**  
**CONCRETE SERVICES LLC**  
St. Louis, MO



**SANDBERG PHOENIX**  
**& VON GONTARD P.C.**

**CONSTRUCTION**



**ROLAND**  
**MACHINERY CO.**

[www.rolandmachinery.com](http://www.rolandmachinery.com)

**James M. Jesuit**  
Vice President/  
General Manager  
St. Louis Division

**KOMATSU**

Phone: 314-291-1330  
Fax: 314-291-8050  
Cell: 314-378-2680  
Email: [jjesuit@rolandmachinery.com](mailto:jjesuit@rolandmachinery.com)

4670 Crossroads Industrial Dr  
Bridgeton, MO 63044



**COLLINS &  
HERMANN**

**INFRASTRUCTURE SOLUTIONS**

1215 Dunn Road  
PO Box 38901-0901  
St. Louis, MO 63138  
[collinsandhermann.com](http://collinsandhermann.com)

**Mike Shepard**  
PRESIDENT | CHIEF OPERATING OFFICER  
[mshepard@collinsandhermann.com](mailto:mshepard@collinsandhermann.com)

office: (314) 869-8000 | mobile: (314) 267-0617 | fax: (314) 869-8498

# SITE APPRECIATES THE SUPPORT OF THESE COMPANIES

**CRANE**  
SINCE 1885

Insurance Agents and Brokers

**Frank Rebholz III, CPCU**  
Executive Vice President

**Chas. L. Crane Agency Co.**  
400 Chesterfield Center, Suite 320  
Chesterfield, MO 63017  
Telephone: 636/537-5641  
Toll Free: 888/905-0100  
Fax: 636/537-5009  
Email: [frebholz@craneagency.com](mailto:frebholz@craneagency.com) COLONEL, USA, Retire

Screen Printing    Embroidery    Safety Apparel

**lizmark**  
BRANDED SOLUTIONS

  
**LIZ TILLMAN**  
[liz@lizmark.com](mailto:liz@lizmark.com)  
636-938-5502

Certified  
**WBE**  
Women's Business Enterprise

BRANDED SOLUTIONS SINCE 1998

Business Gifts    Tradeshow    Giveaways

**PAT KELLY**  
EQUIPMENT CO.  
FAMILY OWNED SINCE 1976

WE SUPPLY OVER 60 INDUSTRY BRANDS

NATIONAL CRANE    NEW HOLLAND    ELLIOTT    Epiroc  
INTERSTATE    BOMAG    WACKER NEUSON    STIHL

NEW & USED EQUIPMENT | RENTAL | PARTS | SERVICE | TOOLS | SUPPLIES



..... FOR ALL YOUR EQUIPMENT NEEDS .....

CALL OR VISIT TO DISCOVER  
EVERYTHING WE OFFER    5920 N. LINDBERGH BLVD    (314) 895-9500  
HAZELWOOD, MO 63042    PATKELLY.COM

**WIESER CONCRETE**

4419 Wagon Wheel Road    Roxana, IL 62084


**Drew Wieser**  
General Manager

Office (618) 251-9210  
Mobile (715) 577-9548  
Fax (618) 251-9211

Email: [dreww@wieserconcrete.com](mailto:dreww@wieserconcrete.com)  
Website: [www.wieserconcrete.com](http://www.wieserconcrete.com)


 

*"Where Quality is a Standard, Not an Extra."*



**THE RIGHT EQUIPMENT FOR EVERY JOB**  
NEW | USED | RENTAL | SERVICE  
**WE DO IT ALL**

**800.845.9188**  
[www.fabickcat.com](http://www.fabickcat.com)



Providing Excellent Service    **LUBY**    For Over 40 Years    **CASE CONSTRUCTION TAKEUCHI**

**EQUIPMENT SERVICES**

**Your Best Options for Equipment Sales, Rentals, Parts & Service**

**David Kedney**  
Vice President of Sales & Marketing

2300 Cassens Dr., Fenton, MO 63026  
Office: 636-343-9970  
Cell: 314-412-8567  
[dkedney@lubyequipment.com](mailto:dkedney@lubyequipment.com)

**Additional Ad Space Available -  
contact Leah (314) 966-2950**

It's Our Business to Protect Yours

**FEDERATED**  
INSURANCE®

**federatedinsurance.com**

Federated Mutual Insurance Company and its subsidiaries\*  
[federatedinsurance.com](http://federatedinsurance.com) | \*Not licensed in all states.  
Ed. 4/19 © 2017 Federated Mutual Insurance Company



# Labor Relations

By Jeremy Bennett  
Director of Labor Relations and Training

As we close out 2019, we reflect back at a year that always seemed busy! Even with a wet spring, work hours reported for 2019 YTD are roughly 5 percent greater than last year. With the increase in construction, contractors reported a stronger presence from union business agents and a bit more jobsite disruptions. I assisted in mitigating a number of those disruptions and understand how frustrating it is when work needs to be finished. The apprenticeship schools all showed a solid increase in applications, but the need is still there for contractors to hire and groom them into skilled workers. Overall contractors seemed pleased, labor leaders were happy, and suppliers celebrated a banner year.

What does 2020 look like? Wish I had a crystal ball, but industry indicators are leaning toward another busy year in construction. Listening to GCs, owners and public works officials, it appears there will be plenty of work to be bid. Contractors are wondering what other factors could impact their bottom line in 2020...here are a couple things to consider:

**Operating Engineers Local 513 Contract Negotiations** – SITE's contracts covering commercial/heavy-highway/building work will be expiring May 1, 2020, and our negotiating committee has already been meeting to prepare for the upcoming discussions with Operating Engineers Local 513. Notices will be sent out for assignment of bargaining rights and upcoming meetings.

**Prevailing Wage** – Contractors' payroll staffs did a nice job submitting hours, and because of their efforts, signatory contractors maintained market share in the five surrounding counties. If contractors can continue to submit hours, the prevailing wage will continue to be maintained in the area. As a reminder, all hours for 2019 must be submitted by the end of January. If hours are not submitted, there will be a large disparity in what an open shop contractor will have to pay on public works projects versus a signatory contractor. If your payroll department is not familiar with the contractors' wage survey, please feel free to reach out to SITE's office for guidance.

**2020 Elections** – Presidential election years could nerve investors, who may just take a wait and see approach. Local elections may suppress developments, but should not impact projects in a capital improvement program.

## Holiday Pay



For contractors who are signatory to SITE's agreements, SITE wanted to make you aware that there are two contractual holidays (Christmas Day and New Year's Day) approaching quickly. Per SITE's Collective Bargaining Agreements, any work performed on Wednesday, December 25, and Wednesday, January 1, is to be paid at double the hourly rate. If you have any questions, please contact Jeremy Bennett at SITE's office.

## Wage/Fringe Notices for 2020

Wage/Fringe increases for Laborers and Cement Masons will be going out late February/early March. For those who are used to seeing the Operating Engineers wage/fringe notices come out in March, those will be sent out once the contract is negotiated. Should you have any questions regarding wage rates, please contact Jeremy Bennett at SITE's office.







## From the Safety Side



### 10 Cold Weather Tips for Construction Companies

1. **Limit exposure to the elements.** When the wind and snow are blowing and temperatures are obscenely low, it can be hard to reduce exposure for workers. The human body isn't made to be outdoors in these elements for long periods of time, so schedule outside work in shorter durations. Consider breaking up larger projects into smaller tasks.
2. **Keep track of weather forecasts.** A worst case scenario is that an employer sends workers out to a job site the day a blizzard blows into town. Employers should watch the local weather and check the National Weather Service. Know when temperatures and conditions could make outside work dangerous.
3. **Provide a warm break area.** Outside work is necessary for the construction industry, but workers need a place to take a break from the elements and warm themselves. It can be a heated trailer or a tent with portable heaters. Employers should also be sure supervisors and workers follow proper safety procedures with heating devices.
4. **Discourage coffee.** Workers may feel like they need their coffee, but beverages with caffeine can increase workers' heart rates and make them feel falsely warm. Instead, encourage workers to drink water.
5. **Require proper gear.** Workers need to have the right clothing for severe weather, including boots, heavy coats, gloves and hats. Employers should require all workers to wear clothing that will keep them warm and dry to prevent hypothermia and frostbite. Also, shoes should have nonslip soles to prevent falling.
6. **Review work sites every day.** Before work begins, supervisors should review the area to ensure no new hazards have formed while workers were away. Common hazards are snow and ice accumulation or downed power lines and trees.
7. **Remove snow and ice.** Workers don't need to deal with snow and ice while they work in addition to extreme low temperatures. Before work is started on a site, employers should ensure snow is removed, salt or sand is put down and large patches of ice are chipped away. It may be a hassle, but making these efforts will greatly reduce the risk of injury.
8. **Inspect and prepare vehicles.** Before heading into the cold season, all work vehicles should be inspected to determine if they are fully functioning. Employers should also add winter emergency kits to work vehicles. These kits should include an ice scraper, snow brush, shovel, tow chain, flashlight with extra batteries, emergency flares, a blanket, snacks and water.
9. **Educate workers on what to do if they are stranded in a vehicle.** Having a vehicle not start or getting into a crash takes on added serious consequences when it occurs during severe weather. Employers should ensure all workers know what to do and who to call if they are stranded in a vehicle.
10. **Educate workers on the signs of frostbite and hypothermia.** Even when employers do everything they can to protect workers, issues can still arise. Supervisors and workers need to know the symptoms of hypothermia and frostbite so that if anyone shows these signs, they can receive immediate medical attention.

– source: [borderstates.com](http://borderstates.com)



2071 Exchange Dr.  
St. Charles, MO 63303  
(314) 966-2950  
Fax: (314) 966-2999

**President**

Jennifer Bouquet - J & J Boring, Inc.

**Vice President**

Mike Steiniger - Kuesel Excavating Co.

**Secretary/Treasurer**

Pat Moriarity - Concrete Strategies, LLC

**Executive Director**

Terry Briggs

---

We're on the web! Visit us at:

[WWW.SITESTL.ORG](http://WWW.SITESTL.ORG)

---

## **2020 UPCOMING EVENTS:**

- |                |  |
|----------------|--|
| Wed., Jan. 8   | <b>GENERAL MEMBERSHIP MEETING</b><br>Syberg's Dorset                           |
| Feb. 6-13      | <b>MANAGEMENT SEMINARS</b><br>Marquis Los Cabos, Los Cabos, Mexico             |
| Tues., Feb. 25 | <b>2020 INVESTMENT IN INFRASTRUCTURE EXPO</b><br>St. Charles Convention Center |
| Wed., March 11 | <b>GENERAL MEMBERSHIP MEETING</b><br>Location TBD                              |