



GOVERNOR PARSON SIGNS SB 262 INTO LAW

Governor Mike Parson on Tuesday, July 13, 2021, signed into law SB 262, increasing the motor fuel tax in Missouri to 29.5 cents by 2025. SITE participated in the bill signing event, here in St. Louis, and was extensively involved in the legislative efforts to increase the much needed funding for road and bridge construction in Missouri. The legislation incrementally increases the gas tax by 2.5 cents annually beginning on October 1 of this year, with the funds earmarked for road and bridge repairs. Subsequent increases are effective on July 1 each year, beginning in 2022, with the final increase taking effect July 1, 2025. The Missouri House of Representatives approved the legislation in the final week of session in May.

Continued on page 4

SITE IMPROVEMENT
ASSOCIATION
NEWSLETTER

TABLE OF CONTENTS

Executive Director's
Column - P. 3

Legislative Report - P. 4

40th Annual Golf Tournament
& Dinner - P. 6

New Member
Orientation - P. 9

Labor Report - P. 10

CONGRATULATIONS TO FRED M. LUTH & SONS!

Fred M. Luth & Sons, Inc. completed its 100th year in business in 2020. In conjunction with the centennial anniversary, Michael Luth was named president of the firm.

Mike is the fourth generation of the Luth family to lead the sewer and water construction company. He has 25 years of experience with the company, holds a B.S. in Civil Engineering from the University of Illinois, and an M.B.A. from St. Louis University, and is a registered Professional Engineer.

Fred M. Luth & Sons values its employees and the business partners who have contributed to the longevity of the family-owned business.



WELCOME SITE'S NEWEST MEMBERS



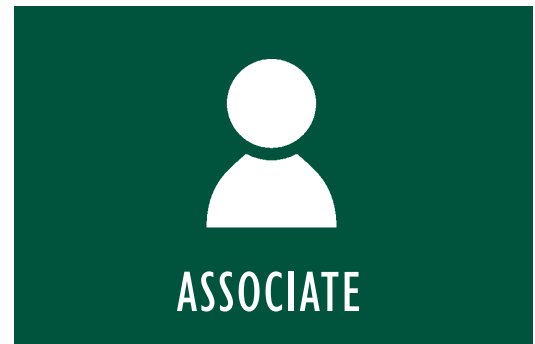
HF Flatwork

(636) 262-2684

Carl Hines



HF FLATWORK



Archview Services

(314) 474-7800

Tony Coco



CONDOLENCES

SITE offers its deepest sympathies to the families of Gene Glosier (Pipeworks Utilities) and Harry Fabick (Fabick CAT). Both Gene and Harry passed away earlier this year.

MEMBERSHIP DIRECTORIES

The 2021-2022 SITE Membership Directory is being mailed to all member companies. Should you need additional copies of the Membership Directory, please contact Leah at SITE's office.

SITE's Membership Directory is a quick and easy way to find contact information about members, as well as other helpful information.

You can also find a digital version of the Membership Directory on SITE's website, www.sitestl.org, under the Directory tab. This version is updated as new members are added and if there are changes to contact information.





EXECUTIVE DIRECTOR'S COLUMN

JEREMY BENNETT

The coronavirus resurgence did not rob another golf tournament from SITE members, and what a day it was for the 40th Annual! Low 80s, partly cloudy and a little humidity made play very enjoyable for the 340 golfers, volunteers and dinner guests. It was nice to see so many familiar faces again and the camaraderie amongst competitors, friends and family! SITE is very fortunate to have so many wonderful men and women active in the organization!

Norwood Hills Country Club, which is hosting the Ascension Charity Classic September 6-12, threw numerous curveballs at SITE's staff, including tee box adjustments and cart path only on the west course, but for good reason as the course looked and played beautifully.

I would like to recognize the golf committee, volunteers, sponsors and SITE's staff, especially Rhonda and Leah, for all their hard work organizing the event. The golf tournament does not run itself and actually takes months of preparation to be executed properly. Again, thank you all!

Thank you to MoDOT and Governor Parson for including SITE in the Highway Funding Senate Bill 262 signing ceremony at Millstone Weber's I-270 project. SITE President Mike Steiniger, Chris Davis and I attended on behalf the organization. SITE and other industry partners can FINALLY say, "WE DID IT!" After all, this was the top priority communicated by SITE's Board for 2021. While we understand user fee increases are not popular, it is necessary to invest in our roads and bridges. Infrastructure is such a critical component to attracting and retaining businesses and

spurring construction along the way. No matter what division of SITE you are in, each and every one of our members will benefit from the passage of Senate Bill 262.



In late July, SITE held an appreciation lunch for all of SITE's appointed trustees and committee members on the various Taft Hartley multiemployer pension plans, health/welfare funds, training funds and training committees. SITE has nearly 20 appointed representatives who give hours of their time and energy to the industry by making sure the participants in each plan are benefiting from the fringe contributions made on an hourly basis. Again, thank you for serving!

On a sad note, Peter Demarea (Tarlton Corporation) passed away from COVID complications on August 14. I served with Pete on the Cement Masons Pension and health/welfare funds and always appreciated his perspective as a trustee. Pete will be dearly missed, and we extend our sincerest sympathies to his family and to Tarlton.

SITE is seeing a strong uptick in hours and every indication shows a busy fall ahead of us. We hope everyone is staying safe and look forward to seeing everyone at our 55th Anniversary celebration in September.

LEGISLATIVE REPORT

BY CHRIS DAVIS

SB 262 includes a rebate program, modeled after a South Carolina law, that enables Missouri motorists to apply annually for a refund of the increased tax through the Department of Revenue.

Once fully phased in, the tax increase is expected to generate about \$375 million additionally per year for state highways and an additional \$138 million per year for city and county transportation needs. The total infusion is expected to generate approximately \$500 million annually in road and bridge construction, across Missouri.

In addition to the gas tax provisions, SB 262 also includes an increase in fees for alternative fuel decals, the establishment of the Electric Vehicle Task Force under the Department of Revenue, and an increase of 10 years in the maximum age of motor vehicles required to have recorded odometer readings in certain instances.

It is SITE's and industry partners' belief that Americans For Prosperity (AFP) have dropped efforts to overturn the legislative effort. A week after the legislation passed, AFP had filed a referendum petition to have the legislation repealed via a statewide vote. However, it now appears that efforts to collect the nearly 110,000 signatures necessary to place the referendum on the statewide ballot have been abandoned.



SITE FORMS MSD GREENBOOK COMMITTEE

SITE has formed a working group committee that has been reviewing and recommending improvements to the Standard Construction Specifications of Metropolitan St. Louis Sewer District (MSD), commonly known as the "Greenbook." The small group of four contractor representatives met extensively in late 2020 and made specific recommendations for change to MSD. The district has made substantial changes and commented on SITE's recommendations, and combined them into the document. SITE's committee is currently reconvening on a weekly basis and again reviewing the new document. The committee is reaching out to other contractor and supplier members of SITE, as appropriate, for additional comments and feedback.

The Committee aggressively plans to provide the additional feedback to MSD by Labor Day, prior to convening a joint meeting with MSD to review and debate all proposed changes to the construction specifications document.

The opportunity for SITE contractors to provide critical input into the construction standards and specifications that govern your businesses is a tremendous benefit. SITE is grateful that MSD would not only allow but proactively seek input from SITE. A huge SITE "thank you" to Jennifer Bouquet of J&J Boring, Inc.; Kris Bates of Bates Utility Company, Inc.; Mike Luth of Fred M. Luth and Sons, Inc.; and Travis Jarrels of SAK Construction for their time and expertise.

WE TRY TO MAKE FINDING PROJECTS EZ

As a contractor, finding construction projects to bid can be a lot of work, especially if you search numerous websites, newspapers and online planrooms. We know because we do it every week.

SITE operates a free online database called EZ BIDS. Users can easily find and search through more than 100 bid opportunities from local cities, counties, sewer districts, school districts and much more.

Members can also search for projects based on demographical areas or the work their company performs. Plus, we send weekly email notifications with planholder lists and new project listings. How easy is that!

Contact Aaron at SITE's office aaron@sitestl.org if you need to become a registered user or do not receive our weekly email notices.

**YES
CLAY BIRD
SHOOT**

**OCTOBER
7
2021**

**Black Hawk Valley
Hunt Club**

**SAVE
THE
DATE**

CONTRACTOR MEMBERS

Concrete Division

Alfred F. Mullen Concrete Contracting Co.	Mike Mullen	(314) 966-0177
Birkemeier Construction, Inc.	Jeff Birkemeier	(636) 978-8892
Boling Concrete Construction	Cindy Boling	(314) 772-6300
Builder's Bloc Contracting Services, LLC	Kevin Deptula	(314) 336-0200
Bumb Construction, Inc.	Dave Bumb	(314) 291-4284
Byrne & Jones Concrete	Carl Rouse	(314) 567-7997
Concrete Strategies, LLC	Pat Morarity	(314) 595-6300
Contegra Services, LLC	Jim Mundy	(618) 219-4895
Fenix Construction Company	Steve Ladenberger	(314) 892-4700
Hawkins Construction and Flat Work LLC	Bob Hawkins	(636) 409-1115
HF Flatwork	Carl Hines	(636) 262-2684
Hoette Concrete Construction Co.	John Hoette	(314) 895-5000
J.S. Aubuchon Concrete Company	Jerry Aubuchon	(636) 661-5655
Joint Sealing Solutions	Blake Gamber	(314) 229-1460
Karrenbrock Construction, Inc.	Roger Karrenbrock	(636) 828-5420
Musselman & Hall Contractors, LLC	Keith Ahal	(314) 739-1142
O'Basuyi Construction, LLC	Patrick O'Basuyi	(314) 462-0620
Oreo & Botta Concrete Company	Tom Milne	(314) 427-3800
R. V. Wagner, Inc.	Dan Wagner	(314) 892-1600
Scharf Construction Co., LLC	Rick Scharf	(314) 869-0060
Spencer Contracting Company	Tony Spencer	(314) 843-5166
T and T Contracting Company	Malcom Thompson	(314) 267-3114
Thick Concrete	Matt Williams	(314) 282-2516
Vee-Jay Cement Contracting Company, Inc.	Stephen Krieger	(314) 351-3366

Earthmoving Division

Ballmann Earthworks, LLC	Jon Ballmann	(636) 236-4242
Bloomsdale Excavating Co., Inc.	Scott Drury	(573) 483-2564
Brandt Contracting, Inc.	Sedrick Brandt	(636) 352-4818
Budrovich Excavating & Contracting	Jeff Budrovich	(314) 892-3030
Busken Construction Company	David Busken	(314) 630-8866
Interstate Equipment, Inc.	Steve Lawrence	(636) 387-7700
Jones Grading & Excavating, Inc.	Noel Jones	(314) 647-1697
K. J. Unnerstall Construction Company	Kurt Unnerstall	(636) 239-2028
Kendall's Hauling, LLC	Kendall Davidson	(314) 517-0905
Kuesel Excavating Co., Inc.	Mike Steiniger	(636) 978-3478
McFry Excavating, Inc.	Doug Pavis	(636) 386-4779
Nor-Vel Grading & Excavating, LLC	Matt Beckmann	(636) 387-1888
Plattin Creek Excavating, LLC	Matt Clark	(314) 287-1848
R & K Excavation, Inc.	Kyle Faulkner	(636) 937-1268
Rich Gullet & Sons, Inc.	Randy Gullet	(636) 271-2327
Sellenriek Grading Company, Inc.	Drew Sellenriek	(636) 938-9299
Semke Grading, LLC	Brenda Semke	(636) 250-4225
Town & Country Grading, Inc.	Alan Laughlin	(636) 475-7887

Highway/Bridge Division

AMCON Municipal Concrete, LLC	Paul Amelong	(636) 379-9396
Gershenson Construction Co., Inc.	Ed Gershenson	(636) 938-9595
Krupp Construction, Inc.	John Meiner	(636) 391-8844
M & H Concrete Contractors, Inc.	Mark Rubinstein	(636) 379-9682
Millstone Weber, LLC	Thom Kuhn	(636) 949-0038
N.B. West Contracting Company, Inc.	Jim Fitzgerald	(314) 962-3145
Pace Construction Company	Ryan Casey	(314) 524-7223
Pavement Solutions, LLC	Matt St. John	(636) 970-2727

Asphalt Paving Division

Accurate Asphalt Paving Co., Inc.	Dan Lucas	(636) 343-5199
Byrne & Jones Construction	Brian Goggins	(314) 567-7997
Diversified Contractors	Brad Laramie	(314) 638-2500
E. Meier Contracting, Inc.	Rod Fain	(636) 300-0908
Ford Asphalt Company, Inc.	Brad Fritsche	(314) 291-2600
Joker Paving & Contracting	Grant Jokerst	(636) 937-7101
L. Keeley Construction	Matt Taylor	(314) 421-5933
Leritz Contracting, Inc./Busy Bee Paving, Inc.	Joe Leritz	(314) 821-2615

Landscaping Division

A. Waldbart & Sons Nursery	Jay Behle	(314) 895-4589
Baxter Farms & Nurseries	Adam Guthrie	(314) 542-9400
Conoyer Brothers Landscaping, Inc.	Craig Conoyer	(636) 397-7217
DJM Ecological Services, Inc.	Doug Bauer	(314) 478-2388
ECO Constructors	Shawn Garland	(636) 561-3158
Greenspace Landscaping	Stephen Kelly	(314) 895-8860
Keeven Brothers Landscaping, Inc.	Mike Keeven	(314) 837-6948
LanDesign, LLC	George Tucker, Jr.	(636) 332-4500
Midwest Turf Contractors	Charity Keeven	(636) 926-9988
Professional Irrigation Systems	Jon Lauer	(636) 695-7800
Roden's Landscaping, Inc.	Steve Roden	(636) 561-3947
ROSCH Midwest, LLC	Scott Rozier	(636) 519-7770
Schaefer-Meyer Seed-Sod Div. 1, Inc.	Greg Meyer	(636) 947-7173
Site System Landscaping, LLC	Kathy Roden	(636) 332-7333

Sewer/Utility Division

Aztec Construction Specialties, LLC	Hector Maldonado	(618) 223-9936
Bates Utility Company, Inc.	Tim Bates	(636) 939-5628
Bi-State Utilities Company	Mike Jerome	(314) 209-0202
C.E. Bollmeier Co., Inc.	Bill Bollmeier	(314) 298-7885
Castle Contracting, LLC	Aaron Retherford	(314) 421-0042
David Mason + Associates	Spencer Mason	(314) 534-1030
Fred M. Luth & Sons, Inc.	Mike Luth	(314) 771-3892
Girdner Contracting LLC	Bridget Girdner	(314) 605-4301
J & J Boring, Inc.	Jennifer Bouquet	(636) 566-6766
J.H. Berra Construction Company, Inc.	Frank Berra	(314) 487-5617
J.W. Bommarito Construction Co., Inc.	Joe W. Bommarito	(314) 353-0104
Karrenbrock Excavating LLC	Doug Bierman	(636) 828-5420
Kelpe Contracting, Inc.	Tom Kelpe	(636) 458-1400
Luther's Supply, LLC	Luther Boykins	(314) 385-6499
Poeling Construction	Shane Poeling	(636) 463-2437
S & S Utility Contracting Company, Inc.	Danny Purler	(314) 220-5161
SAK Construction	Jerry Shaw	(636) 385-1500
Semke Pipe Works, Inc.	Brenda Semke	(636) 250-4225
Southern Ditching & Excavating Company	T.J. Moor	(636) 441-1112
TaylorMade Construction, LLC	Andre Taylor	(314) 868-1005
Unnerstall Contracting Company, LLC	Steve Unnerstall	(636) 257-3003
Williams Tunnelling Industries, Inc.	Edison Williams	(314) 925-8649
XL Contracting, Inc.	Ken Novel	(636) 970-2710

Specialty Division

AgriCycle, Inc.	Patrick Geraty	(636) 861-3344
All Star Concrete Pumping	Keith Dennis	(636) 475-9539
Badger Daylighting Corporation	Benji Koonce	(314) 954-7192
C2 Service Group, Inc.	Lorri Keenum	(636) 283-5031
Cherokee Hauling, LLC	Mike Tallis	(314) 393-7112
CNC Foundations, Inc.	Ray Van Amburg	(618) 213-8853
Collins & Hermann, Inc.	Mike Shepard	(314) 869-8000
Drainscapes	Casey Graves	(314) 892-9888
Drilling Service Company	Sean Jackson	(314) 291-1111
Elastizell of St. Louis, Inc.	Jane Megown	(636) 225-4311
Fick Supply Service, Inc.	Dave Fick	(314) 560-0146
George McDonnell & Sons Tuckpointing Co., Inc.	Tom McDonnell	(314) 739-0468
GS Grinding Services, LLC	Dave Grimes	(636) 474-1183
Hansen's Tree Service & Environmental Resources	Ken Byrne	(636) 379-1830
Ideal Landscape Group	Dave Buckel	(314) 892-9500
J&R Concrete Services, LLC	Stephanie Johnson	(314) 596-2311
Kurtz Nursery and Topsoil	Matthew Kurtz	(636) 405-2667
McConnell & Associates Corporation	Greg Lucas	(314) 962-1920
MW Drone Photography	Mark Wheeler	(314) 398-2569
Native Landscape Solutions, Inc.	Chuck Caverly	(314) 544-7918
Premier Demolition, Inc.	Bill Buell	(314) 645-5566
Reinhold Electric, Inc.	Jerry Reinhold	(314) 631-1158
Retaining Wall Solutions	Michael Yount	(314) 842-8200
Supplied Industrial Solutions	Stephen Brock	(618) 452-8151
Thomas Industrial Coatings, Inc.	Don Thomas	(636) 475-3500
Traffic Control Company	Joe Backer	(636) 225-7800
TraMar Contracting, Inc.	Peggy McGrath	(636) 255-0808
Two Alpha Contracting, LLC	Rhiannon Parisi	(636) 384-1296

July/August



ASSOCIATE MEMBERS

1st Advantage Bank	Greg Smith	(636) 970-0440	Kohrs Truck & Auto Repair, Inc.	Harold Kohrs	(636) 240-7935
24/7 OnSite Cameras	Nick Bartolotta	(314) 718-0453	Lizmark Branded Solutions	Liz Tillman	(314) 394-0901
Acuity Insurance	AJ Gajdosik	(636) 287-2068	Luby Equipment Services	David Kedney	(636) 343-9970
Advanced Drainage Systems	Brian Snelson	(618) 593-6135	Luby Shoring Services, LLC	John Powell	(636) 660-7467
American Steel Fabrication, Inc.	Tim Thomas	(636) 475-7272	Magruder Limestone Company, Inc.	Jacob Fortner	(636) 528-4180
Archview Services	Tony Coco	(314) 474-7800	Mannino Truck Leasing, Inc.	Joe Mannino	(314) 393-0715
ASP Enterprises, Inc.	Don Thieman	(636) 343-4357	MayeCreate, LLC	Stacy Brockmeier	(573) 447-1836
Bank of Springfield (BOS Bank)	Marty McCabe	(314) 888-6906	Middendorf, Inc.	Allan Middendorf	(618) 540-8446
BITCO Insurance Companies	Chris Demse	(314) 822-4446	Mississippi Valley Equipment Company	Bob Clapsaddle	(314) 869-8600
Bobcat of St. Louis	Mike Allen	(636) 225-2900	Missouri Petroleum Products Company	Mike Hartman	(314) 219-7305
Bussen Quarries, Inc.	Mark Bussen	(314) 894-8777	National Trench Safety	Scott Emmitt	(314) 383-0504
Carmody and Associates, Inc.	Robert Carmody, Jr.	(618) 231-8899	Neenah Foundry Company	Brandon Ostendorf	(636) 928-1023
CarsonAllaria Wealth Management	Joe Allaria	(618) 288-9505	Nu Way Concrete Forms, Inc.	Mike Townsend	(314) 544-1214
Central Power Systems	Chuck Bauers	(314) 427-4911	OnSite Companies	Aaron Jackstadt	(636) 519-0507
Central Stone Company	Jeff Pullen	(314) 830-9000	Pacific GeoSource	Allen Akowicz	(636) 439-0431
Champion Precast, Inc.	Joel Anderson	(573) 384-5855	Pat Kelly Equipment Company, Inc.	Brian Kelly	(314) 895-9500
Charles L. Crane Agency Company	Frank Rebholz III	(636) 537-5641	Peoples Savings Bank	Don Meyer	(636) 398-5600
Cintas First Aid and Safety	Annie Gitto	(314) 825-1369	Providence Bank	Nick Brunnworth	(636) 397-3804
Clayton Engineering Company, Inc.	Steve Quigley	(314) 692-8888	Purple Wave Auction	Scott Broz	(636) 725-6737
CMIT Solutions	Barry Herring	(636) 925-9920	Rackers & Fernandez, LLC	Sergio Fernandez	(636) 498-1900
CMW Equipment	Larry Glynn	(314) 993-1336	Ritchie Bros. Auctioneers	Andrew Dillard	(618) 792-1670
Cogent Analytics	Joe Wayman	(314) 749-6153	Rock Hill Quarries Co.	Bruce Dresser	(314) 968-2336
Contech Engineered Solutions, LLC	Rob Richardson	(417) 459-7875	Roland Machinery Company	James Jesuit	(314) 291-1330
Core & Main	Randy Bradley	(314) 432-4750	RubinBrown LLP	Ken Van Bree	(314) 290-3429
County Materials Corporation	Joel Gardner	(217) 544-4607	Rudd Equipment Company	John Robinson	(314) 487-8925
CSTK	Allen Lane	(314) 771-6666	Rush Truck Centers of Missouri, Inc.	Justin Demers	(314) 449-7200
Dan Althoff Trucking, Inc.	Dan Althoff	(636) 677-7772	Safety International	Douglas Sicking	(636) 498-4476
Dewitt Insurance	Alex Toler	(314) 527-2522	Safety Training Resources	Jeff Viehmann	(314) 808-3502
Don Brown Chevrolet	Mike Kitchen	(314) 207-4471	Sandberg, Phoenix & von Gontard, P.C.	Tony Soukenik	(314) 446-4279
Energy Petroleum Company	Steve Madras	(314) 383-3700	Schmersahl Treloar & Co.	Marianne Biangardi	(314) 966-2727
Enterprise Bank & Trust	Brian Green	(314) 543-3914	SCI Engineering, Inc.	Karl Koenigsfeld	(636) 584-7991
EquipmentShare	David Meyer	(636) 459-8640	Silver Eagle Construction Products, Inc.	Erik Thompson	(636) 240-6300
Erb Equipment Company	Gregg Erb	(636) 349-0200	Simpson Materials Company	Steve Simpson	(636) 343-4944
Fabick CAT	Scott Crean	(636) 626-8948	SmithAmundsen LLC	Daniel Peters	(314) 719-3766
Federated Insurance	Cole Waddell	(316) 617-7880	St. Louis Composting	Roy Gross	(636) 861-3344
Fred Weber, Inc.	Jack Branz	(314) 344-0070	Stormwater STL LLC	Steve Polk	(314) 406-7655
G.S. & S.	Chris Hyams	(314) 298-8100	Topcon Solutions	Terry Gammill	(816) 985-1791
Gateway Dredging & Contracting, LLC	Terry Bangert	(636) 665-5180	U.S. Bank	Sean Johnson	(314) 307-6256
Hanes Geo Components	Steve Wright	(636) 875-7317	United Rentals	Angie Wheeler	(314) 267-7621
Hayden Machinery LLC	Jeremy Hancock	(314) 550-1400	United Rentals -Trench Safety	James Dickey	(314) 729-0003
Heritage Petroleum, LLC	Mike Mabrey	(314) 504-3198	Vanguard Truck Centers	Dan Green	(618) 857-7625
Interstate Testing Services	Andy LaPlante	(314) 994-0641	Vermeer Midwest, Inc.	Chad Van Soelen	(636) 532-2332
J.D. Kutter	Brenda Mainer	(314) 444-4949	Wallis Lubricants, LLC	Kati Douglas	(636) 271-0900
J.W. Terrill, Inc.	Pete Mohs	(314) 594-2700	Warrenton Oil Company	David Baker	(636) 456-3346
John J. Guilfooy & Associates, LLC	John Guilfooy	(314) 781-1122	Western Ready-Mix, Inc.	Mike Reed	(636) 519-1522
K & K Supply Inc.	Matt Williams	(636) 349-1141	Wieser Concrete Products, Inc.	Drew Wieser	(618) 251-9210
K & P Precast, Inc.	Tammy Daugherty	(636) 978-3111	Winter Brothers Material Company	Ryan Winter	(314) 843-1400
Kienstra Co.	Dan Bruns	(314) 994-1616	Workplace Synergy	Maureen Trompeter	(314) 473-4665
Kienstra Precast, LLC	Steve Peery	(618) 482-3283			

MAKE SITE WORK FOR YOU

Call on SITE members for the highest quality products and services

July/August

40TH ANNUAL GOLF TOURNAMENT AND DINNER

After COVID-19 canceled SITE's Annual Golf Tournament and Dinner in 2020, the 40th Annual Tournament was finally held on Monday, Aug 16. For the third straight tournament, registrations reached the maximum number of golfers possible, 300! Golfers and volunteers were treated to ideal weather conditions at Norwood Hills Country Club on the day of the tournament.

While it was another sellout year for golfers, it was also a record year for sponsorships! A huge thank you to all of the sponsors of the golf tournament.



SITEPAC seized an opportunity to conduct a Bourbon Raffle at the tournament and successfully raised \$3,700. Attendees could purchase up to \$100 in raffle tickets for chances to win a variety of 11 different bourbon bottles. (It is unlawful for an individual to make, or for SITEPAC to receive, greater than a \$100 anonymous cash contribution.) Ultimately, Steve Groene of Tramar Contracting, Inc. held the winning ticket and claimed the bourbon collection, with a suggested retail value of \$525. Congratulations, Steve.



The 2020 golf tournament was just one SITE event impacted by COVID-19. SITE's efforts to surprise former Executive Director Terry Briggs with a retirement party were thwarted by COVID. Given Terry enjoyed coordinating and participating in the tournament each year, it was only fitting to recognize him at there. Terry was recognized before the large golf crowd by SITE's current Executive Director, Jeremy Bennett, and St. Louis County Executive Sam Page. St. Louis County issued a proclamation to Mr. Briggs naming August 16th as "Terry Briggs Day" and celebrated the accomplishments of Terry throughout his career at SITE Improvement Association. We wish Terry the best in his retirement.



West Course Winners:

Closest to the pin #4

Adam Guthrie

Closest to the pin #7

Dave Schatz

Closest to the pin #10

Steve Schaller

Closest to the pin #12

Spencer Mason

Longest drive 64 & younger

Bill George

(pictured below)

Longest drive 65 & over

Mike Jerome



Flight Winners:



A Flight Winners

Score: 53

Pictured: Andy Jones, Jason Frede, Adam Guthrie and Andy Francis



B Flight Winners

Score: 64

Pictured: Tony Palumbo, Rich Unverferth and Todd Basler
Not pictured: Tim Bussen



C Flight Winners

Score: 68

Pictured: Stephen Milne, Chris Davis, and Tom Milne
Not pictured: Adam Haarmann

East Course Winners:

Closest to the pin #8

Greg Bangert

Closest to the pin #10

Dan Christian

Closest to the pin #13

Tony Soukenik

Closest to the pin #15

Tanner Alexander

(pictured below)

Longest drive 64 & younger

Kyle Mensing

Longest drive 65 & over

Mike Clark

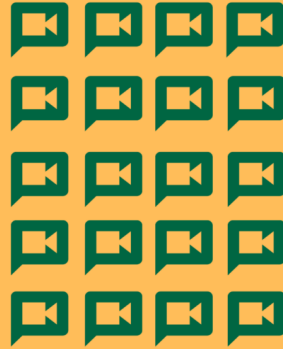
Ladies longest drive

Julie Fernandez



TUNE IN TUESDAYS

@ 10:00 a.m.



UPCOMING TUNE IN TUESDAY WEBINAR

“Components of a Successful Fleet”

When: Tuesday, August 24, 2021

Presented by: Lisa Lamons of Concrete Strategies, LLC



Description: As construction contractors, we are faced with managing a fleet of vehicles, trucks, CDL drivers, non CDL drivers, and maintenance of our vehicles, all while navigating through the unfamiliar world of DOT and FMCSA. They have their own special rules and regulations that we must comply with as we try to manage employees who are mainly construction-minded individuals. Navigating wrongly could lead to violations and audits that could result in your fleet being shut down; inhibiting our production in the field. This webinar will be a high level overview of how to structure your successful fleet.

INTERESTED IN SEEING YOUR WEBINAR POSTED HERE?

SITE is looking for interested members, both associate and contractor, to host educational webinars. Are you interested in hosting a Tune In Tuesday webinar? Contact Aaron at aaron@sitestl.org or find more details at www.sitestl.org. This is a great opportunity to get in front of SITE's members and educate them on topics relative to their business while maintaining social distancing. It will also provide members a chance to get a better understanding of the services each company/firm provides.

SITE BOARD ELECTIONS

Interested in becoming a member of SITE's board of directors? The process starts in September when those interested in serving on the board either seek someone to nominate them or nominate themselves. Following the receipt of nominations, a ballot is drafted and sent to contractors in each of the construction divisions, with voting in October.

Each of SITE's seven construction divisions-- Asphalt Paving, Concrete, Earthmoving, Highway and Bridge, Landscaping, Sewer/Utility and Specialty-- have two representatives on the board of directors. The terms of office are two years, with a limit of three consecutive terms (six years). Terms are staggered so that one seat is voted upon each year.

Only companies within the contractor division are allowed to vote for the candidate representing their division. For example, concrete contractors vote only for the director in the concrete division. Each company in good standing and having paid in full their membership dues is allowed one vote in the election. If a tie occurs, a second ballot is mailed to contractors for another vote.

The Associate Division is handled much the same way, except Associate Division directors are limited to only two terms. A nominating committee, consisting of the association president, immediate past president and other association division director not standing for election, develops the ballot based on nominations submitted. If no nominees are submitted, the committee recruits candidates to seek the office.

Directors elected this year begin serving on the board January 2022.

Watch for more details emailed from SITE staff in September!

NEW MEMBER ORIENTATION

SITE Improvement Association held a new member orientation on Thursday, July 15. The new members learned about the SITE staff, history of SITE and its role in the industry, contractor divisions and associate members, the structure of the Executive Officers and Board of Directors, how SITE is funded, services offered through SITE and how to get involved. The lunch was well attended. Mr. Steiniger presented the new members with their SITE membership plaque. SITE received an email from a new member who attended who said, "It was nice to put faces with all the past correspondence. I wanted to thank you guys for offering the new member orientation. I felt it was very beneficial to meet the staff, see the office and learn more about SITE. I also thought it was super impressive that Mike Steiniger was present for today's meeting. It showed me how much pride everyone who is super involved has in SITE. Lunch was much appreciated as well"..



Tony Coco with
Archview Services



Mike Tallis with
Cherokee Hauling



Joe Wayman with
Cogent Analytics



Mike Kitchen with Don
Brown Chevrolet



Mark Wheeler with MW
Drone Photography



Allan Akowicz with
Pacific GeoSource



Steve Polk and
Marianne Pott with
Stormwater STL



CELEBRATE 55 YEARS OF SITE WITH A BANG!

Register for an explosive time and celebrate with SITE at its 55th Anniversary party as Sky Wars Exclusive VIPs at The Village of Innsbrook Fireworks Field on **Saturday, September 25. Registration closes Tuesday, August 31.**

Cost is \$125 per person. This event is for those 21 and over. Price includes VIP parking, premium open bar, appetizers, buffet dinner with desserts, and the best seats in the house for the nation's largest fireworks competition.

To register, visit www.sitestl.org and look for the 55th Anniversary under the Events tab. For questions about this event, contact Rhonda by email at rhonda@sitestl.org or at SITE's office by calling (314) 966-2590. **No reservations will be accepted after Tuesday, August 31.**



SITE APPRECIATES THE SUPPORT OF THESE COMPANIES

Barrier
Concrete
Steel
Temporary Traffic Control
Full Service
Rental
Sales
Pavement Marking
Full Service
Temporary
Permanent
Removals
Marker Install
Material Sales

TRAMAR
CONTRACTING, INC.

DBE CERTIFIED CONTRACTOR
3051 Merchantile Ind. Dr.
St. Charles, MO 63301

636-255-0808
fax 636-255-0719
cell 314-852-5088

Hawkins Construction and Flat Work, LLC
Bob Hawkins, President

223 O'Fallon Plaza
O'Fallon, MO 63366

636-409-1115 office
314-267-9785

bob@hawkinsconstruction.net
website: www.hawkinsconstruction.net

ESTK
CRAIG DIERKING
OFF-HIGHWAY SALES SPECIALIST

Office: 314-256-5302
Mobile: 314-337-8894
420 East Carrie Avenue
Saint Louis, MO 63147
cdierking@estk.com

RedDOT
Eberspächer
AFEX
FIRE SUPPRESSION SYSTEMS

PAT KELLY
EQUIPMENT CO.
FAMILY OWNED SINCE 1976

Celebrating 45 Years!
1976 2021

NEW HOLLAND CONSTRUCTION
NATIONAL CRANE

NEW & USED EQUIPMENT | PARTS | RENTAL | SERVICE | SUPPLIES | TOOLS

314-895-9500 | PATKELLY.COM

BRIDGING AMERICA'S COMMUNITIES
THAT'S THOMAS PRIDE.

Thomas Industrial Coatings, Inc. is a multi-certified industrial painting and coatings contractor dedicated to quality, safety, and efficiency. We take great pride in our work, and it shows on every job we do across the country.

thomasindcoatings.com (636)475-3500
For career opportunities please visit thomasindcoatings.com/careers

KOHR'S
TRUCK & AUTO REPAIR INC.
www.kohrstruck.com
Kathy

636-240-7935 615 Arrow Ln O'Fallon, MO 63366

NTS NATIONAL TRENCH SAFETY

Dee Deslatte
Branch Sales Manager

Cell: 314-910-0067
Email: DeeDeslatte@ntsafety.com

"THE TRENCH & TRAFFIC SAFETY SPECIALIST"
RENTALS • SALES • SERVICE • TRAINING

Mississippi Valley Equipment Company
Pile Driving & Drilling Equipment

Call Ken or Bob
www.mve-stl.com
(314) 869-8600 • (800) 325-8001

1198 Pershall Road • St. Louis, MO 63137

Gregory A. Smith
President / Chief Executive Officer

636.970.0440 office
greg.smith@1stadvantagebank.com

1st Advantage Bank
Community Minded, Technology Driven

240 Salt Lick Road
St. Peters, MO 63376
1stAdvantageBank.com

ESTK
DON JACOBS
SALES REPRESENTATIVE

Office: 314-256-5315
Mobile: 314-810-6325
Address: 420 E. Carrie Ave.
St. Louis, MO 63147
Email: djacobs@estk.com

AUTO CRANE
IMT
An Oshkosh Corporation Company
CM TRUCK BEDS

SITE APPRECIATES THE SUPPORT OF THESE COMPANIES

Insurance / Surety Bonds
for the Construction Industry



**MARSH & MCLENNAN
AGENCY**

Pete Mohs

314-374-6136

Pete.Mohs@MarshMMA.com

marshmma.com/stl



MATT RESSLER
SALES REPRESENTATIVE

Office: 314-256-5334
Mobile: 314-304-1005
420 East Carrie Avenue
Saint Louis, MO 63147
mressler@estk.com

READING
— NO BODY BETTER —



Rick Scharf
Owner

Specializing in Industrial, Commercial, and Structural Concrete
www.scharfstl.com

Cell (314) 280-4000
Office (314) 869-0060
Fax (314) 869-0067

119 Didion Suite B.
St. Peters, MO 63376
Email: scharfconstruction@hotmail.com



**Your Best Options for Equipment Sales,
Rentals, Parts & Service**

David Kedney

Vice President of
Sales & Marketing

2300 Cassens Dr., Fenton, MO 63026
Office: 636-343-9970
Cell: 314-412-8567
dkedney@lubyequipment.com



**NATIONAL
TRENCH SAFETY**

Brian Stark
Outside Sales

Cell: 314-365-2295
Email: BrianStark@ntsafety.com

"THE TRENCH & TRAFFIC SAFETY SPECIALIST"
RENTALS • SALES • SERVICE • TRAINING



www.rolandmachinery.com

James M. Jesuit

Vice President/
General Manager
St. Louis Division

KOMATSU

Phone: 314-291-1330

Fax: 314-291-8050

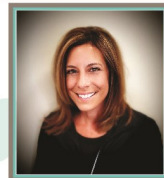
Cell: 314-378-2680

Email: jjesuit@rolandmachinery.com

Screen Printing Embroidery Safety Apparel

lizmark

BRANDED SOLUTIONS



LIZ TILLMAN

liz@lizmark.com

O: 314-394-0901

C: 314-706-1275



BRANDED SOLUTIONS SINCE 1998

Business Gifts Tradeshow Giveaways



INFRASTRUCTURE SOLUTIONS

1215 Dunn Road
PO Box 38901-0901
St. Louis, MO 63138
collinsandhermann.com

Mike Shepard

PRESIDENT | CHIEF OPERATING OFFICER

mshepard@collinsandhermann.com

office: (314) 869-8000 | mobile: (314) 267-0617 | fax: (314) 869-8498



PAUL KEIL
SALES MANAGER

Office: 314-256-5331
Mobile: 314-565-8370
Address: 420 E. Carrie Ave.
St. Louis, MO 63147
Email: pkeil@estk.com



READING
— NO BODY BETTER —



**Additional Ad Space Available -
contact Leah (314) 966-2950**

LABOR REPORT

BY JEREMY BENNETT

PENSION FUNDING

With positive investment returns hitting double digits and funding improvement plans in place, many pension funds have bounced back with their funding levels. Pension fund trustees, which include equal labor and management, are looking at dropping the assumed rate of returns on these funds. What does that mean? It means if the current assumed rate of return is 7.5 percent, and the fund is having trouble hitting that rate of return each year, it may be wise to lower the rate of return once pension levels rise due to big returns from the markets. In future years when returns are lower than the assumed rate of return, it is a softer blow on the funded percentage.



These are big decisions being made by labor and management. While all trustees would love to see these funds 140 percent+ funded, it does take time with the ebbs and flows of investment returns.

CURRENT PENSION FUNDING PERCENTAGE UPDATES

Operating Engineers Local 513: 84 percent funded
Cement Masons Local 527: 89 percent funded
St. Louis Laborers: 101 percent funded
St. Charles/Outstate Laborers: 99 percent funded

LABOR MANAGEMENT

MEETING WITH OPERATING ENGINEERS LOCAL 513

Mid- July, SITE hosted its annual Labor-Management Meeting with Local 513 to discuss industry concerns successes and help resolve any current issues; – which at the forefront was manpower. With more than 30 contractors and 8 union reps present, it was a very lively but productive meeting. Contractors are concerned with the lack of qualified Operators with the uptick in work. Work hours reported are indicating an uphill trend in hours as 2021 carries into September. The discussion circled back to permitted employees and pre-apprentices, who can help support the workload. Contractors also discussed diversity ordinances and how the Local 513 program could try different tactics to increase minority participation in the training program. Should any contractor have any questions regarding the pre-apprentice or permit employee application, please contact Jeremy Bennett at SITE's office.

CURRENT MAN-POWER REPORTS



Operating Engineers Local 513: 97 percent members are employed.

Cement Masons Local 527: 99 percent members are employed.

St. Louis Laborers: 97 percent members are employed.

St. Charles/Outstate Laborers: 96 percent members are employed.

COVID VACCINATIONS



As COVID cases continue to rise in Missouri, the Centers for Disease Control (CDC) are urging the public to get the vaccination. Many health experts agree the best way to decrease your risk is by getting the vaccine. If your employees wish to receive the vaccination, the Department of Labor and OSHA are urging employers to grant them paid time off for all employees. Businesses with fewer than 500 employees may be eligible for tax credits under the American Rescue Plan if they provide paid time off for employees who decide to receive the vaccine and to recover from any potential side effects from the vaccine.

Get the facts about COVID-19 vaccines and find a vaccine near you at [MOPStopsCovid.com](https://moplastopsCovid.com).



FROM THE SAFETY SIDE

EXCESSIVE ALCOHOL CONSUMPTION

The 2021 impaired driving national enforcement mobilization "**Drive Sober or Get Pulled Over**" goes into effect across the country from August 18 to September 6, 2021. One of the deadliest and most often committed - yet preventable - of crimes (impaired driving), has become a serious safety epidemic in our country. Unfortunately, the construction industry has a very high rate of heavy alcohol use among workers.

Therefore, it's important to talk to your employees about the dangers of not just impaired driving, but also excessive drinking. According to the CDC, "*Excessive drinking includes binge drinking, heavy drinking, and any drinking by pregnant women or people younger than age 21. Binge drinking, the most common form of excessive drinking, is defined as consuming (4 or more drinks during a single occasion for women) and (5 or more drinks during a single occasion for men).*" Alcohol and other drugs disrupt coordination and judgment, increasing a worker's risk of being involved in a variety of accidents. Workers don't have to use the substances at work to be at an increased risk, though. Hangovers from substance abuse can increase fatigue and decrease focus.

There are also long-term health risks associated with heavy alcohol consumption. Over time, excessive alcohol use can lead to the development of chronic diseases and other serious problems including high blood pressure, heart disease, stroke, liver disease, and many other issues. Recently, I was informed a family friend was diagnosed with Cirrhosis. If you've never heard of it, Cirrhosis is a late stage of scarring (fibrosis) of the liver caused by many forms of liver diseases and chronic alcoholism. Sadly, Cirrhosis is non-reversible and can cause an individual to be more susceptible to other illnesses.



If an employee asks for resources, there are a few treatment clinics in our area.

- Alcoholics Anonymous STL, 14 Sunnen Dr Ste 144, St. Louis, MO 63143 (314) 647-3677
- TriCounty Intergroup, St. Charles County (636) 970-0013



2071 Exchange Dr.
St. Charles, MO 63303
(314) 966-2950
Fax: (314) 966-2999

President

Mike Steiniger - Kuesel Excavating Co.

Vice President

Pat Moriarity - Concrete Strategies, LLC

Secretary/Treasurer

Chris Gottman - Millstone Weber, LLC

Executive Director

Jeremy Bennett

WWW.SITESTL.ORG

2021 UPCOMING EVENTS

Saturday, Sept. 25

SITE's 55th ANNIVERSARY CELEBRATION

Innsbrook - Skywars Challenge

Thursday, Oct. 7

CLAY BIRD SHOOT

Black Hawk Valley

Thursday, Oct. 28

JOINT LUNCH WITH APWA

Orlando's - Maryland Heights

Thursday, Dec. 9

HOLIDAY HAPPY HOUR

Bogey Hills Country Club

Visit sitestl.org for more upcoming events