



CELEBRATING 55 YEARS OF SITE WITH A BANG!

SITE celebrated its 55th Anniversary with a bang at the Sky Wars Fireworks Competition Event located at The Village of Innsbrook Fireworks Field on Saturday, September 25. Thank you to the 250 members



who came out to celebrate SITE's 55 years and made this event a huge success. Who would have thought you could have so much fun watching the nation's largest fireworks competition in the middle of a large field! A 500-foot wall of fire and other firebombs (a

SITE IMPROVEMENT
ASSOCIATION
NEWSLETTER

TABLE OF CONTENTS

New Members - P. 2

**Executive Director's
Column - P. 3**

Legislative Report - P. 4

**2022 Management
Seminars - P. 7**

Labor Report - P. 10

total of 496.5 gallons of gasoline) were ignited throughout the evening. An explosive time it was! SITE arranged the only private space at the event with caricature artists crafting amazing drawings for members along with catering from Sugarfire Smoke House and dessert from Ted Drewes. SITE's private bar and posh potties were also a huge hit! The weather was picture perfect for the event, even a little on the cool side as the sun set over the fireworks field. SITE provided members with black and white blankets as gifts, which were perfect to snuggle in toward the evening hours. A special shout-out goes to Innsbrook for allowing SITE to be its first-ever private VIP group.



CONDOLENCES

Todd Fulsom with Kelpie Contracting passed away mid-September. Todd would attend meetings and conferences to speak on behalf of SITE's contractors regarding the issues with underground utility locates. SITE will miss his passion to advocate for our members and hopes others will step forward to continue Todd's efforts. We extend our deepest condolences to the Kelpie Contracting family and the Fulsom family during this difficult time.

WELCOME TO SITE'S NEWEST MEMBERS



ASSOCIATES

Consolidated Pipe & Supply Co.

801 Marshall Rd.
Valley Park, MO 63088
Chris Hausmann
(636) 825-6678

ISCO Industries, Inc.

127 Walden Dr.
Glen Carbon, IL 62034
Shaun Parker
(314) 422-7234

Kirby-Smith Machinery, Inc.

12920 Gravois Rd.
St. Louis, MO 63127
Matt Nelson
(314) 729-0125

New Frontier Materials

2300 Creve Coeur Mill Rd.
Maryland Heights, MO 63043
Rusty Durbin
(314) 473-3434

Traffic Management

9300 Natural Bridge Rd.
Berkeley, MO 63134
Josh Turk
(314) 309-5928



EXECUTIVE DIRECTOR'S COLUMN

JEREMY BENNETT

A very busy September just flew by us at the SITE office, but time stood still as we celebrated the Association's 55th Anniversary at Innsbrook's Fireworks Field! SITE's members were greeted to a wonderful VIP experience with premier parking, private outdoor space, caricature artists, Sugarfire catered dinner, drinks, and of course front row fireworks seats! SITE sold out all its 250 tickets for the event, and guests were extra happy that the weather was absolutely perfect. We cannot thank our members enough; it's because of your dedication and guidance that SITE continues to thrive. Thank you for making our 55th Anniversary such a wonderful occasion. Thank you to Rhonda and Leah for their hard work communicating with Innsbrook and sorting through mounds and mounds of details to bring the event to life. SITE's staff does an excellent job planning and executing events for members – they are simply the best.

Less than a week after the 55th Anniversary celebration, SITE's Board met for its annual Fall Board Meeting at the Lake of the Ozarks to lay-out priorities for 2022. I appreciated all the perspectives and discussions that ultimately developed SITE's visioning plan for next year. Some of the initiatives discussed include ideas to combat errant underground utility locates, resources to assist members with labor shortages due to COVID vaccine mandates, enhancement of training and leadership programs, creation of a diversity task force to recruit more minority owners into the industry, and several other items. Should any member want to see our visioning plan for 2022, please let me know. After the

Board meeting, a round of golf was organized at Old Kinderhook, one of Missouri's most beautiful courses. The weather was spitting a little rain, making the cart path quite slick. The cart holding two of our "seasoned" attendees, Jay Schultenrich and Mark Bussen slid down a steep section of cart path and flipped over on both individuals. Jay had a few bruises on his ankle and ribs, but Mark took the brunt of the impact, fracturing his hip and receiving several deep cuts. It was a very scary situation for both individuals, but fortunately both are doing well and recovering quickly.

SITE completed its fall fun with a sold out clay bird shoot! The proceeds from the shoot support the Young Executives of SITE's initiatives in the community and for professional development. I am very impressed with the number of excellent shooters and sling shot snipers amongst our membership. It was another successful event and very enjoyable. Thank you again to SITE's staff, especially Leah, for her hard work putting it all together.

I also would like to commend Chris Davis on bringing together MSD contractors to review and edit MSD's specs or "green book". The group met numerous times late summer and into the fall, providing contractors' input toward recent changes and adding their own edits. I also want to thank Aaron for his efforts in organizing the upcoming safety training and leadership development opportunities. It should continue to be a busy fall and winter here at the SITE office.

Don't forget to sign up for our upcoming October 28 General Membership Meeting and Holiday Happy Hour on December 9. We are looking to close out our 55th year in fine fashion. Hope to see you all there!



LEGISLATIVE REPORT






BY CHRIS DAVIS

October 1 was a day to celebrate for SITE Improvement Association. On this day, the motor fuel tax increased by 2.5 cents in Missouri, the first increase in nearly 25 years. As a result of SITE and industry efforts, the Legislature passed and Governor Parson approved SB 262, which will phase in a 12.5-cent motor fuel tax increase over the next four years. The first 2.5-cent increase was effective on October 1.

Once fully implemented on July 1, 2024, the increase is expected to generate about \$375 million additionally per year for state highways and an additional \$138 million per year for city and county transportation needs. The total infusion is expected to generate approximately \$500 million annually in road and bridge construction across Missouri. These numbers are fully dependent on the number of Missouri motorists that apply annually for a refund of the incremental tax increase. The rebate option was a critical component of the legislation.

MoDOT recently published estimates on how much funding each county and municipality could expect throughout Missouri. The St. Louis region is poised to receive significant transportation funding as a result.

In addition to the \$375 million directly to MODOT, highway departments in the following counties should expect to receive the following direct transportation funding increases, according to MODOT:

| | |
|--|---------------|
|  St. Louis County | \$8.1 million |
|  St. Charles County | \$2.7 million |
|  Jefferson County | \$2.9 million |
|  Franklin County | \$1.5 million |
|  St. Louis City | \$570,000 |

Municipalities within St. Louis County are expected to receive between \$8-10 million, in addition to the \$8 million the county itself can expect. Florissant leads the pack with an expected \$1 million, closely followed by Chesterfield at just under \$925,000.

All of these funds can be utilized as matching funds for federal transportation dollars. In addition, SITE expects



Governor Parson to continue providing \$50 million in General Funds for a 50/50 local matching program.

All of this adds up to considerable road construction for SITE members.

SITE SUPPORTS \$1.2 TRILLION FEDERAL INFRASTRUCTURE PACKAGE

The funding provided by the state motor fuel tax increase could be additionally enhanced should Congress pass President Biden's \$1.2 billion infrastructure package. The Bipartisan deal passed the Senate 69-30 in early August but has languished in the House over partisan squabbles on other issues. Progressive Democrats are withholding support for the legislation in exchange for support on a broader \$3 trillion social infrastructure package. Conservatives are withholding support for this proposal over a showdown on the debt ceiling.

SITE stood with Union and industry counterparts to call on Missouri's congressional delegation to support the President's \$1.2 trillion infrastructure package.



The bipartisan agreement invests more than \$550 billion in America's infrastructure over the next five years. The deal calls for investing \$110 billion for roads, bridges, and major infrastructure projects. Included in that amount is \$40 billion specifically for bridge repair and

replacement--the single largest bridge investment in the nearly 70-year history of the interstate highway system. This also includes \$16 billion for large "major projects" that may be too complicated for traditional funding mechanisms. Also included in the package is \$11 billion for transportation safety, including a program to help states and localities reduce crashes and fatalities, especially involving cyclists and pedestrians.

Separately, the package included \$39 billion to modernize and upgrade public transit. In addition, the deal would also invest \$66 billion in passenger and freight rail. The funds would eliminate Amtrak's maintenance backlog. Included in that package is \$12 billion in partnership grants for intercity rail service, including high-speed rail.

The legislation also includes \$65 billion in investments and improvements to broadband infrastructure.

The deal would invest \$17 billion in port infrastructure and \$25 billion in airports to address repair and maintenance backlogs, reduce congestion and emissions near ports and airports, and promote electrification and other low-carbon technologies.

\$7.5 billion would go to building a nationwide network of plug-in electric vehicle chargers.

The package would invest \$65 billion to rebuild the electric grid, according to the White House. It calls for building thousands of miles of new power lines and expanding renewable energy. It would provide \$55 billion to upgrade water infrastructure, including the replacement of lead service lines and pipes so that communities have access to clean drinking water.

Another \$50 billion would go toward making the system more resilient -- protecting it from drought, floods, and cyber-attacks.

The bill would provide \$21 billion to clean up Superfund and brownfield sites, reclaim abandoned mine land and cap orphaned gas wells.

Missouri is expected to receive \$6.5 billion for federal highway programs and \$484 million for bridge repairs and replacements over the next five years. The state also has the opportunity to bid for a \$12.5 billion investment in its bridges through the Bridge Investment Program and a \$16 billion allotment for major projects aimed at economic development.

Missouri is also expected to receive a minimum of \$100 million to improve the state's broadband infrastructure under the bill, providing access to more than 330,000 residents.

YES HAPPY HOUR



The Young Executives of SITE kicked off Labor Day weekend this year with their first Happy Hour event in almost two years. Nearly 55 YES (and SITE) members gathered at Bar Louie in St. Charles on Thursday, September 2. The group came together to eat and drink and restore normal social interactions that are hallmark to SITE membership. There was no agenda for the Happy Hour, other than to come together and enjoy each other's company. However, the YES Steering Committee did meet prior to the Happy Hour to finalize planning the return of the annual Claybird Shoot, which was held on October 7. In addition to the Claybird Shoot, the steering committee began succession planning, as many members of the committee are aging out. The Happy Hour was a joyous event. Thank you to everyone who attended.



CONTRACTOR MEMBERS

Concrete Division

| | | |
|---|-------------------|----------------|
| Alfred F. Mullen Concrete Contracting Co. | Mike Mullen | (314) 966-0177 |
| Birkemeier Construction, Inc. | Jeff Birkemeier | (636) 978-8892 |
| Boling Concrete Construction | Cindy Boling | (314) 772-6300 |
| Builder's Bloc Contracting Services, LLC | Kevin Deptula | (314) 336-0200 |
| Bumb Construction, Inc. | Dave Bumb | (314) 291-4284 |
| Byrne & Jones Concrete | Carl Rouse | (314) 567-7997 |
| Concrete Strategies, LLC | Pat Morarity | (314) 595-6300 |
| Contegra Services, LLC | Jim Mundy | (618) 219-4895 |
| Fenix Construction Company | Steve Ladenberger | (314) 892-4700 |
| Hawkins Construction and Flat Work LLC | Bob Hawkins | (636) 409-1115 |
| HF Flatwork | Carl Hines | (636) 262-2684 |
| Hoette Concrete Construction Co. | John Hoette | (314) 895-5000 |
| J.S. Aubuchon Concrete Company | Jerry Aubuchon | (636) 661-5655 |
| Joint Sealing Solutions | Blake Gamber | (314) 229-1460 |
| Karrenbrock Construction, Inc. | Roger Karrenbrock | (636) 828-5420 |
| Musselman & Hall Contractors, LLC | Keith Ahal | (314) 739-1142 |
| O'Basuyi Construction, LLC | Patrick O'Basuyi | (314) 462-0620 |
| Oreo & Botta Concrete Company | Tom Milne | (314) 427-3800 |
| R. V. Wagner, Inc. | Dan Wagner | (314) 892-1600 |
| Scharf Construction Co., LLC | Rick Scharf | (314) 869-0060 |
| Spencer Contracting Company | Tony Spencer | (314) 843-5166 |
| T and T Contracting Company | Malcom Thompson | (314) 267-3114 |
| Thick Concrete | Matt Williams | (314) 282-2516 |
| Vee-Jay Cement Contracting Company, Inc. | Stephen Krieger | (314) 351-3366 |

Earthmoving Division

| | | |
|---------------------------------------|------------------|----------------|
| Ballmann Earthworks, LLC | Jon Ballmann | (636) 236-4242 |
| Bloomsdale Excavating Co., Inc. | Scott Drury | (573) 483-2564 |
| Brandt Contracting, Inc. | Sedrick Brandt | (636) 352-4818 |
| Budrovich Excavating & Contracting | Jeff Budrovich | (314) 892-3030 |
| Busken Construction Company | David Busken | (314) 630-8866 |
| Interstate Equipment, Inc. | Steve Lawrence | (636) 387-7700 |
| Jones Grading & Excavating, Inc. | Noel Jones | (314) 647-1697 |
| K. J. Unnerstall Construction Company | Kurt Unnerstall | (636) 239-2028 |
| Kendall's Hauling, LLC | Kendall Davidson | (314) 517-0905 |
| Kuesel Excavating Co., Inc. | Mike Steiniger | (636) 978-3478 |
| McFry Excavating, Inc. | Doug Pavis | (636) 386-4779 |
| Nor-Vel Grading & Excavating, LLC | Matt Beckmann | (636) 387-1888 |
| Plattin Creek Excavating, LLC | Matt Clark | (314) 287-1848 |
| R & K Excavation, Inc. | Kyle Faulkner | (636) 937-1268 |
| Rich Gullet & Sons, Inc. | Randy Gullet | (636) 271-2327 |
| Sellenriek Grading Company, Inc. | Drew Sellenriek | (636) 938-9299 |
| Semke Grading, LLC | Brenda Semke | (636) 250-4225 |
| Town & Country Grading, Inc. | Alan Laughlin | (636) 475-7887 |

Highway/Bridge Division

| | | |
|-------------------------------------|-----------------|----------------|
| AMCON Municipal Concrete, LLC | Paul Amelong | (636) 379-9396 |
| Gershenson Construction Co., Inc. | Ed Gershenson | (636) 938-9595 |
| Krupp Construction, Inc. | John Meiner | (636) 391-8844 |
| M & H Concrete Contractors, Inc. | Mark Rubinstein | (636) 379-9682 |
| Millstone Weber, LLC | Thom Kuhn | (636) 949-0038 |
| N.B. West Contracting Company, Inc. | Jim Fitzgerald | (314) 962-3145 |
| Pace Construction Company | Ryan Casey | (314) 524-7223 |
| Pavement Solutions, LLC | Matt St. John | (636) 970-2727 |

Asphalt Paving Division

| | | |
|--|---------------|----------------|
| Accurate Asphalt Paving Co., Inc. | Dan Lucas | (636) 343-5199 |
| Byrne & Jones Construction | Brian Goggins | (314) 567-7997 |
| Diversified Contractors | Brad Laramie | (314) 638-2500 |
| E. Meier Contracting, Inc. | Rod Fain | (636) 300-0908 |
| Ford Asphalt Company, Inc. | Brad Fritsche | (314) 291-2600 |
| Joker Paving & Contracting | Grant Jokerst | (636) 937-7101 |
| L. Keeley Construction | Matt Taylor | (314) 421-5933 |
| Leritz Contracting, Inc./Busy Bee Paving, Inc. | Joe Leritz | (314) 821-2615 |

Landscaping Division

| | | |
|--------------------------------------|--------------------|----------------|
| A. Waldbart & Sons Nursery | Jay Behle | (314) 895-4589 |
| Baxter Farms & Nurseries | Adam Guthrie | (314) 542-9400 |
| Conoyer Brothers Landscaping, Inc. | Craig Conoyer | (636) 397-7217 |
| DJM Ecological Services, Inc. | Doug Bauer | (314) 478-2388 |
| ECO Constructors | Shawn Garland | (636) 561-3158 |
| Greenspace Landscaping | Stephen Kelly | (314) 895-8860 |
| Keeven Brothers Landscaping, Inc. | Mike Keeven | (314) 837-6948 |
| LanDesign, LLC | George Tucker, Jr. | (636) 332-4500 |
| Midwest Turf Contractors | Charity Keeven | (636) 926-9988 |
| Professional Irrigation Systems | Jon Lauer | (636) 695-7800 |
| Roden's Landscaping, Inc. | Steve Roden | (636) 561-3947 |
| ROSCH Midwest, LLC | Scott Rozier | (636) 519-7770 |
| Schaefer-Meyer Seed-Sod Div. 1, Inc. | Greg Meyer | (636) 947-7173 |
| Site System Landscaping, LLC | Kathy Roden | (636) 332-7333 |

Sewer/Utility Division

| | | |
|---|------------------|----------------|
| Aztec Construction Specialties, LLC | Hector Maldonado | (618) 223-9936 |
| Bates Utility Company, Inc. | Tim Bates | (636) 939-5628 |
| Bi-State Utilities Company | Mike Jerome | (314) 209-0202 |
| C.E. Bollmeier Co., Inc. | Bill Bollmeier | (314) 298-7885 |
| Castle Contracting, LLC | Brian Carlson | (314) 421-0042 |
| David Mason + Associates | Spencer Mason | (314) 534-1030 |
| Fred M. Luth & Sons, Inc. | Mike Luth | (314) 771-3892 |
| Girdner Contracting LLC | Bridget Girdner | (314) 605-4301 |
| J & J Boring, Inc. | Jennifer Bouquet | (636) 566-6766 |
| J.H. Berra Construction Company, Inc. | Frank Berra | (314) 487-5617 |
| J.W. Bommarito Construction Co., Inc. | Joe W. Bommarito | (314) 353-0104 |
| Karrenbrock Excavating LLC | Doug Bierman | (636) 828-5420 |
| Kelpe Contracting, Inc. | Tom Kelpe | (636) 458-1400 |
| Luther's Supply, LLC | Luther Boykins | (314) 385-6499 |
| Poeling Construction | Shane Poeling | (636) 463-2437 |
| S & S Utility Contracting Company, Inc. | Danny Purler | (314) 220-5161 |
| SAK Construction | Jerry Shaw | (636) 385-1500 |
| Semke Pipe Works, Inc. | Brenda Semke | (636) 250-4225 |
| Southern Ditching & Excavating Company | T.J. Moor | (636) 441-1112 |
| TaylorMade Construction, LLC | Andre Taylor | (314) 868-1005 |
| Unnerstall Contracting Company, LLC | Steve Unnerstall | (636) 257-3003 |
| Williams Tunnelling Industries, Inc. | Edison Williams | (314) 925-8649 |
| XL Contracting, Inc. | Ken Novel | (636) 970-2710 |

Specialty Division

| | | |
|---|-------------------|----------------|
| AgriCycle, Inc. | Patrick Geraty | (636) 861-3344 |
| All Star Concrete Pumping | Keith Dennis | (636) 475-9539 |
| Badger Daylighting Corporation | Benji Koonce | (314) 954-7192 |
| C2 Service Group, Inc. | Lorri Keenum | (636) 283-5031 |
| Cherokee Hauling, LLC | Mike Tallis | (314) 393-7112 |
| CNC Foundations, Inc. | Ray Van Amburg | (618) 213-8853 |
| Collins & Hermann, Inc. | Mike Shepard | (314) 869-8000 |
| Drainscapes | Casey Graves | (314) 892-9888 |
| Drilling Service Company | Sean Jackson | (314) 291-1111 |
| Elastizell of St. Louis, Inc. | Jane Megown | (636) 225-4311 |
| Fick Supply Service, Inc. | Dave Fick | (314) 560-0146 |
| George McDonnell & Sons Tuckpointing Co., Inc. | Tom McDonnell | (314) 739-0468 |
| GS Grinding Services, LLC | Dave Grimes | (636) 474-1183 |
| Hansen's Tree Service & Environmental Resources | Ken Byrne | (636) 379-1830 |
| Ideal Landscape Group | Dave Buckel | (314) 892-9500 |
| J&R Concrete Services, LLC | Stephanie Johnson | (314) 596-2311 |
| Kurtz Nursery and Topsoil | Matthew Kurtz | (636) 405-2667 |
| McConnell & Associates Corporation | Greg Lucas | (314) 962-1920 |
| MW Drone Photography | Mark Wheeler | (314) 398-2569 |
| Native Landscape Solutions, Inc. | Chuck Caverly | (314) 544-7918 |
| Premier Demolition, Inc. | Bill Buell | (314) 645-5566 |
| Reinhold Electric, Inc. | Jerry Reinhold | (314) 631-1158 |
| Retaining Wall Solutions | Michael Yount | (314) 842-8200 |
| Supplied Industrial Solutions | Stephen Brock | (618) 452-8151 |
| Thomas Industrial Coatings, Inc. | Don Thomas | (636) 475-3500 |
| Traffic Control Company | Joe Backer | (636) 225-7800 |
| TraMar Contracting, Inc. | Peggy McGrath | (636) 255-0808 |
| Two Alpha Contracting, LLC | Rhiannon Parisi | (636) 384-1296 |

July/August



ASSOCIATE MEMBERS

| | | | | | |
|-------------------------------------|---------------------|----------------|--|--------------------|----------------|
| 1st Advantage Bank | Greg Smith | (636) 970-0440 | Kirby-Smith Machinery, Inc. | Matt Nelson | (314) 729-0125 |
| 24/7 OnSite Cameras | Nick Bartolotta | (314) 718-0453 | Kohrs Truck & Auto Repair, Inc. | Harold Kohrs | (636) 240-7935 |
| Acuity Insurance | AJ Gajdosik | (636) 287-2068 | Lizmark Branded Solutions | Liz Tillman | (314) 394-0901 |
| Advanced Drainage Systems | Brian Snelson | (618) 593-6135 | Luby Equipment Services | David Kedney | (636) 343-9970 |
| American Steel Fabrication, Inc. | Tim Thomas | (636) 475-7272 | Luby Shoring Services, LLC | John Powell | (636) 660-7467 |
| Archview Services | Tony Coco | (314) 474-7800 | Magruder Limestone Company, Inc. | Jacob Fortner | (636) 528-4180 |
| ASP Enterprises, Inc. | Don Thieman | (636) 343-4357 | Mannino Truck Leasing, Inc. | Joe Mannino | (314) 393-0715 |
| Bank of Springfield (BOS Bank) | Marty McCabe | (314) 888-6906 | MayeCreate, LLC | Stacy Brockmeier | (573) 447-1836 |
| BITCO Insurance Companies | Chris Demse | (314) 822-4446 | Middendorf, Inc. | Allan Middendorf | (618) 540-8446 |
| Bobcat of St. Louis | Mike Allen | (636) 225-2900 | Mississippi Valley Equipment Company | Bob Clapsaddle | (314) 869-8600 |
| Bussen Quarries, Inc. | Mark Bussen | (314) 894-8777 | Missouri Petroleum Products Company | Mike Hartman | (314) 219-7305 |
| Carmody and Associates, Inc. | Robert Carmody, Jr. | (618) 231-8899 | National Trench Safety | Scott Emmitt | (314) 383-0504 |
| CarsonAllaria Wealth Management | Joe Allaria | (618) 288-9505 | Neenah Foundry Company | Brandon Ostendorf | (636) 928-1023 |
| Central Power Systems | Chuck Bauers | (314) 427-4911 | New Frontier Materials | Rusty Durbin | (314) 473-3434 |
| Central Stone Company | Jeff Pullen | (314) 830-9000 | Nu Way Concrete Forms, Inc. | Mike Townsend | (314) 544-1214 |
| Champion Precast, Inc. | Joel Anderson | (573) 384-5855 | OnSite Companies | Chuck Davis | (636) 519-0507 |
| Charles L. Crane Agency Company | Frank Rebholz III | (636) 537-5641 | Pacific GeoSource | Allen Akowicz | (636) 439-0431 |
| Cintas First Aid and Safety | Annie Gitto | (314) 825-1369 | Pat Kelly Equipment Company, Inc. | Brian Kelly | (314) 895-9500 |
| Clayton Engineering Company, Inc. | Steve Quigley | (314) 692-8888 | Peoples Savings Bank | Don Meyer | (636) 398-5600 |
| CMIT Solutions | Barry Herring | (636) 925-9920 | Providence Bank | Nick Brunnworth | (636) 397-3804 |
| CMW Equipment | Larry Glynn | (314) 993-1336 | Purple Wave Auction | Scott Broz | (636) 725-6737 |
| Cogent Analytics | Joe Wayman | (314) 749-6153 | Rackers & Fernandez, LLC | Sergio Fernandez | (636) 498-1900 |
| Consolidated Pipe & Supply Company | Chris Hausmann | (636) 825-6678 | Ritchie Bros. Auctioneers | Andrew Dillard | (618) 792-1670 |
| Contech Engineered Solutions, LLC | Rob Richardson | (417) 459-7875 | Rock Hill Quarries Co. | Bruce Dresser | (314) 968-2336 |
| Core & Main | Randy Bradley | (314) 432-4750 | Roland Machinery Company | James Jesuit | (314) 291-1330 |
| County Materials Corporation | Joel Gardner | (217) 544-4607 | RubinBrown LLP | Ken Van Bree | (314) 290-3429 |
| CSTK | Allen Lane | (314) 771-6666 | Rudd Equipment Company | John Robinson | (314) 487-8925 |
| Dan Althoff Trucking, Inc. | Dan Althoff | (636) 677-7772 | Rush Truck Centers of Missouri, Inc. | Justin Demers | (314) 449-7200 |
| Dewitt Insurance | Alex Toler | (314) 527-2522 | Safety International | Douglas Sicking | (636) 498-4476 |
| Don Brown Chevrolet | Mike Kitchen | (314) 207-4471 | Safety Training Resources | Jeff Viehmann | (314) 808-3502 |
| Energy Petroleum Company | Steve Madras | (314) 383-3700 | Sandberg, Phoenix & von Gontard, P.C. | Tony Soukenik | (314) 446-4279 |
| Enterprise Bank & Trust | Brian Geen | (314) 543-3914 | Schmersahl Treloar & Co. | Marianne Biangardi | (314) 966-2727 |
| EquipmentShare | David Meyer | (636) 459-8640 | SCI Engineering, Inc. | Karl Koenigsfeld | (636) 584-7991 |
| Erb Equipment Company | Gregg Erb | (636) 349-0200 | Silver Eagle Construction Products, Inc. | Erik Thompson | (636) 240-6300 |
| Fabick CAT | Scott Crean | (636) 626-8948 | Simpson Materials Company | Steve Simpson | (636) 343-4944 |
| Federated Insurance | Cole Waddell | (316) 617-7880 | SmithAmundsen LLC | Daniel Peters | (314) 719-3766 |
| Fred Weber, Inc. | Jack Branz | (314) 344-0070 | St. Louis Composting | Roy Gross | (636) 861-3344 |
| G.S. & S. | Chris Hyams | (314) 298-8100 | Stormwater STL LLC | Steve Polk | (314) 406-7655 |
| Gateway Dredging & Contracting, LLC | Terry Bangert | (636) 665-5180 | Topcon Solutions | Terry Gammill | (816) 985-1791 |
| Hanes Geo Components | Steve Wright | (636) 875-7317 | Traffic Management, Inc. | Josh Turk | (314) 309-5928 |
| Hayden Machinery LLC | Jeremy Hancock | (314) 550-1400 | U.S. Bank | Sean Johnson | (314) 307-6256 |
| Heritage Petroleum, LLC | Mike Mabrey | (314) 504-3198 | United Rentals | Angie Wheeler | (314) 267-7621 |
| Interstate Testing Services | Andy LaPlante | (314) 994-0641 | United Rentals -Trench Safety | James Dickey | (314) 729-0003 |
| ISCO Industries, Inc. | Shaun Parker | (314) 422-7234 | Vanguard Truck Centers | Dan Green | (618) 857-7625 |
| J.D. Kutter | Kim Connell | (314) 444-4949 | Vermeer Midwest, Inc. | Chad Van Soelen | (636) 532-2332 |
| J.W. Terrill, Inc. | Pete Mohs | (314) 594-2700 | Wallis Lubricants, LLC | Kati Douglas | (636) 271-0900 |
| John J. Guilfoy & Associates, LLC | John Guilfoy | (314) 781-1122 | Warrenton Oil Company | David Baker | (636) 456-3346 |
| K & K Supply Inc. | Matt Williams | (636) 349-1141 | Western Ready-Mix, Inc. | Mike Reed | (636) 519-1522 |
| K & P Precast, Inc. | Tammy Daugherty | (636) 978-3111 | Wieser Concrete Products, Inc. | Drew Wieser | (618) 251-9210 |
| Kienstra Co. | Dan Bruns | (314) 994-1616 | Winter Brothers Material Company | Ryan Winter | (314) 843-1400 |
| Kienstra Precast, LLC | Steve Peery | (618) 482-3283 | Workplace Synergy | Maureen Trompeter | (314) 473-4665 |

MAKE SITE WORK FOR YOU

Call on SITE members for the highest quality products and services

September/October

8TH ANNUAL CLAY BIRD SHOOT AND FUNDRAISER

The Young Executives of SITE (YES) would like to extend a huge thank you to all who participated in, volunteered at, and sponsored the 8th Annual Clay Bird Shoot held on Thursday, October 7. It was good to see the event return after COVID forced the shoot to switch to a virtual duck hunt in 2020. The shoot was once again a huge success, and YES is looking forward to planning next year's shoot! There were two teams who shot a perfect 56 out of 56 birds and another four teams shot 55 out of 56 birds. Luckily we had prepared for a tie and used none other than everyone's favorite fall time candy...candy corn! 771 pieces of candy corn to be exact. Each team was asked to guess the number of candy corn in a jar, and all three flights required the use of the tie breaker. Check out a few of the photos from the day, including flight winners.



A Flight Winners: Core & Main #2 - 56 birds

Pictured from left to right: Zach Nannini, Jon Scott and Brad Nobel
Not pictured: Joe Lester



B Flight Winners: RubinBrown, LLP - 50 birds

Pictured from left to right: Craig Bussen and Chris West
Not pictured: Ken Van Bree and Mike Harman



C Flight Winners: Core & Main #1 - 45 birds

Pictured from left to right: Mike Johnson and Kevin Chestnut
Not pictured: Don Ackermann and Rich Beckerman



Thank you to all of the sponsors!

MANAGEMENT SEMINARS

Who out there would like to be a snowbird and leave the St. Louis cold winter to stay in warm Puerto Vallarta, Mexico? If this sounds like a good idea, then check out SITE Advancement Foundation's 36th Annual Management Seminars trip. Enjoy the picture-perfect education experience and stay in the Preferred Club at the brand new, adults-only, all-inclusive Secrets Bahia Mita Surf & Spa Resort, which opened on August 1, 2021. Two options are available; choose either a seven night stay from Thursday, January 27 through Thursday, February 3 or choose four night stay from Thursday, January 27 through Monday, January 31.



SITE Advancement Foundation will be hosting two seminars: Friday, January 28 from 8:00-10:00 a.m. and Saturday, January 29 from 8:00-10:00 a.m. The speaker will be Daniel Stover, founder & CEO of Enight Partners. The seminar title is "The Brain of a Leader: Building Trust and Collaboration Across the Office and the Field."

With these seminars you'll learn how to improve your ability to "read the room," relate and communicate more effectively to a broader range of employees and teammates, navigate difficult conversations and relationships more effectively, redefine mistakes and failure to improve accountability conversations, and simplify giving and receiving feedback. Daniel has two degrees from Ohio State University and his master's degree in Organizational Psychology from The Chicago School of Professional Psychology. He has a long history of working with construction, manufacturing, steel, and general contracting companies.

For more information, please visit the SITE website: www.sitestl.org

SITE hopes to see all of you in Mexico!!!



2021-2022 TRAINING COURSES



FIRST AID/CPR / AED

TUESDAY, NOVEMBER 30, 2021



EXCAVATION COMPETENT PERSON

TUESDAY, DECEMBER 14, 2021



ADVANCED WORKZONE / FLAGGER

TUESDAY, JANUARY 11, 2022



OSHA 10

JANUARY 19, 2022 & JANUARY 20, 2022



CONFINED SPACE

TUESDAY, FEBRUARY 8, 2022



EXCAVATION COMPETENT PERSON

TUESDAY, MARCH 8, 2022



OSHA 10

MARCH 22, 2022 & MARCH 23, 2022



SILICA COMPETENT PERSON

TUESDAY, APRIL 5, 2022



RIGGING PERSON

TUESDAY, APRIL 12, 2022



OSHA 30

APRIL 19, 2022 APRIL 20, 2022
APRIL 21, 2022 APRIL 22, 2022

Cost varies depending on course. Additional information on these and other training opportunities are available at www.sitestl.org. Space is limited and registration is required. If you have any questions or would like register for any of these courses, contact leah@sitestl.org.

SCHOLARSHIP OPPORTUNITY



Scholarship applications for high school seniors and/or college students will be available Monday, December 7. Applicants must be the child or step-child of a full-time employee or officer of a SITE contractor or associate member in good standing. Such employee or officer shall be employed at the employer's facility located within the St. Louis metropolitan area. Applications for scholarships and the 2022 Eligibility Rules & Application Process will be mailed and emailed to all member companies and will be available at www.sitestl.org on the front page listed under 2022 Scholarship Information. Contact Leah at (314) 966-2950 should you have any questions.

2022 CONSTRUCTION LEADERSHIP CERTIFICATION



REGISTRATION IS
LIMITED!

16 participants
\$1,700 per person

COURSE SCHEDULE

Foundations for Effective Leadership
January 25, 2022 @ Washington University

Government Affairs
February 1, 2022 @ SITE Improvement Association

Communication: Connect through Conversations
February 15, 2022 @ Washington University

Labor Relations & Legal
March 1, 2022 @ SITE Improvement Association

Strategies for Influencing Others
March 15, 2022 @ Washington University

Safety/ Insurance Update
March 29, 2022 @ SITE Improvement Association

Resolving Workplace Conflict
April 12, 2022 @ Washington University



DEC 9 • 5-8PM • BOGEY HILL COUNTRY CLUB

HOLIDAY HAPPY HOUR

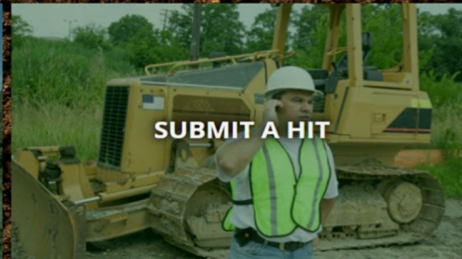
SITE IMPROVEMENT ASSOCIATION

We are currently developing a new feature on our website. Our goal is to create a one stop shop resource page for everything related to underground utilities, Missouri One Call, etc.

Here is a sneak peek!

**PRE-EXCAVATION CHECKLIST**

Users will be able to click on the link and access an electronic format of our pre-excavation checklist. This checklist is designed to assist the excavator, supervisor, safety manager and all jobsite personnel in safely conducting an excavation.

**SUBMIT A HIT**

The "submit a hit" feature is an electronic document with questions and step-by-step instructions for employees. This form also will allow users to save photos from the incident to better protect them from liability.

**VIEW SUBMISSIONS**

Once a contractor submits their information, it will be sent via email to their inbox as well as a database for recordkeeping. Users will only be able to access their information in the submission database.

BEFORE YOU DIG... Call Missouri One Call.

Call 1-800-DIG-RITE or 811

[PLACE A LOCATE REQUEST HERE](#)

USIC Missouri Contact List

Should you experience any problems or issues with your utility locate, excavators are encouraged to contact USIC supervisors which oversee the geographic area of the address of the dig site. Below is a link to the USIC Missouri contact list.

[DOWNLOAD PDF](#)

Besides the ability to place a locate request online, users also will have access to the USIC Missouri Contact List. Excavators are encouraged to contact USIC supervisors if they experience any issues with their locate.

SITE APPRECIATES THE SUPPORT OF THESE COMPANIES

Barrier
Concrete
Steel
Temporary Traffic Control
Full Service
Rental
Sales
Pavement Marking
Full Service
Temporary
Permanent
Removals
Marker Install
Material Sales

TRAMAR CONTRACTING, INC.

DBE CERTIFIED CONTRACTOR
3051 Merchantile Ind. Dr.
St. Charles, MO 63301

636-255-0808
fax 636-255-0719
cell 314-852-5088

Hawkins Construction and Flat Work, LLC
Bob Hawkins, President

223 O'Fallon Plaza
O'Fallon, MO 63366

636-409-1115 office
314-267-9785

bob@hawkinsconstruction.net
website: www.hawkinsconstruction.net

ESTK
CRAIG DIERKING
OFF-HIGHWAY SALES SPECIALIST

Office: 314-256-5302
Mobile: 314-337-8894
420 East Carrie Avenue
Saint Louis, MO 63147
cdierking@estk.com

RedDOT
Eberspächer
AFEX
FIRE SUPPRESSION SYSTEMS

PAT KELLY EQUIPMENT CO.
FAMILY OWNED SINCE 1976

Celebrating 45 Years!
1976 2021

NEW & USED EQUIPMENT | PARTS | RENTAL | SERVICE | SUPPLIES | TOOLS

314-895-9500 | PATKELLY.COM

BRIDGING AMERICA'S COMMUNITIES
THAT'S THOMAS PRIDE.

Thomas Industrial Coatings, Inc. is a multi-certified industrial painting and coatings contractor dedicated to quality, safety, and efficiency. We take great pride in our work, and it shows on every job we do across the country.

thomasindcoatings.com (636)475-3500

For career opportunities please visit
thomasindcoatings.com/careers

KOHR'S TRUCK & AUTO REPAIR INC.
www.kohrstruck.com
Kathy

636-240-7935 615 Arrow Ln O'Fallon, MO 63366

NTS NATIONAL TRENCH SAFETY

Dee Deslatte
Branch Sales Manager

Cell: 314-910-0067
Email: DeeDeslatte@ntsafety.com

"THE TRENCH & TRAFFIC SAFETY SPECIALIST"
RENTALS • SALES • SERVICE • TRAINING

Mississippi Valley Equipment Company
Pile Driving & Drilling Equipment

Call Ken or Bob
www.mve-stl.com
(314) 869-8600 • (800) 325-8001

1198 Pershall Road • St. Louis, MO 63137

Gregory A. Smith
President / Chief Executive Officer

636.970.0440 office
greg.smith@1stadvantagebank.com

1st Advantage Bank
Community Minded, Technology Driven

240 Salt Lick Road
St. Peters, MO 63376
1stAdvantageBank.com

ESTK
DON JACOBS
SALES REPRESENTATIVE

Office: 314-256-5315
Mobile: 314-810-6325
Address: 420 E. Carrie Ave.
St. Louis, MO 63147
Email: djacobs@estk.com

AUTO CRANE
IMT
An Oshkosh Corporation Company
CM TRUCK BEDS

SITE APPRECIATES THE SUPPORT OF THESE COMPANIES

Insurance / Surety Bonds
for the Construction Industry



**MARSH & MCLENNAN
AGENCY**

Pete Mohs

314-374-6136

Pete.Mohs@MarshMMA.com

marshmma.com/stl



MATT RESSLER
SALES REPRESENTATIVE

Office: 314-256-5334
Mobile: 314-304-1005
420 East Carrie Avenue
Saint Louis, MO 63147
mressler@estk.com

READING
— NO BODY BETTER —



Rick Scharf
Owner

Specializing in Industrial, Commercial, and Structural Concrete
www.scharfstl.com

Cell (314) 280-4000
Office (314) 869-0060
Fax (314) 869-0067

119 Didion Suite B.
St. Peters, MO 63376
Email: scharfconstruction@hotmail.com



**Your Best Options for Equipment Sales,
Rentals, Parts & Service**

David Kedney

Vice President of
Sales & Marketing

2300 Cassens Dr., Fenton, MO 63026
Office: 636-343-9970
Cell: 314-412-8567
dkedney@lubyequipment.com



**NATIONAL
TRENCH SAFETY**

Brian Stark
Outside Sales

Cell: 314-365-2295
Email: BrianStark@ntsafety.com

"THE TRENCH & TRAFFIC SAFETY SPECIALIST"
RENTALS • SALES • SERVICE • TRAINING



www.rolandmachinery.com

James M. Jesuit

Vice President/
General Manager
St. Louis Division

KOMATSU

Phone: 314-291-1330

Fax: 314-291-8050

Cell: 314-378-2680

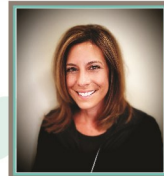
Email: jjesuit@rolandmachinery.com

4670 Crossroads Industrial Dr
Bridgeton, MO 63044

Screen Printing Embroidery Safety Apparel

lizmark

BRANDED SOLUTIONS



LIZ TILLMAN

liz@lizmark.com

O: 314-394-0901

C: 314-706-1275



BRANDED SOLUTIONS SINCE 1998

Business Gifts Tradeshow Giveaways



INFRASTRUCTURE SOLUTIONS

1215 Dunn Road
PO Box 38901-0901
St. Louis, MO 63138
collinsandhermann.com

Mike Shepard

PRESIDENT | CHIEF OPERATING OFFICER

mshepard@collinsandhermann.com

office: (314) 869-8000 | mobile: (314) 267-0617 | fax: (314) 869-8498



PAUL KEIL
SALES MANAGER

Office: 314-256-5331

Mobile: 314-565-8370

Address: 420 E. Carrie Ave.
St. Louis, MO 63147

Email: pkeil@estk.com



READING
— NO BODY BETTER —



**Additional Ad Space Available -
contact Leah (314) 966-2950**

LABOR REPORT

BY JEREMY BENNETT



The dirt finally dried out, and work has been busy out there on construction sites! Manhours reported through September

were slightly up compared to last year, which is no surprise. Although contractors appreciated the dry weather, it caused problems finding skilled labor in a tight pinch. Below I included the current levels of employed workers within the St. Louis union trades. The high employment rates could mean a shortage when requesting more workers from the local union hall.

| | |
|-------------------|----------------------------|
| 99% Operators | 99% Laborers |
| 99% Cement Masons | 99% Teamsters |
| 95% Iron Workers | 99% Insulators |
| 95% Brick Layers | 95% Plumbers & Pipefitters |
| 95% Electricians | 95% Sheet Metal Workers |
| 99% Carpenters | 99% Sprinkler Fitters |
| 99% Painters | 85% Boiler Makers |

Some trades, like the operating engineers, have extended the working periods for retirees to meet the demand for labor. Should contractors have any questions regarding apprenticeship program requirements or new hires within the trades please feel free to discuss them with me.

ST. LOUIS-KANSAS CITY CARPENTERS REGIONAL COUNCIL DISSOLVES

I understand this is old news by now, but it should be reported that geographical and trade jurisdiction of the former St. Louis-Kansas City Carpenters Regional Council has been assigned to the Chicago Regional Council. Apparently the decision was made as a means to increase oversight of operations, reduce costs, maximize available resources, and increase market competitiveness.



Gary Perinar, Executive Secretary-Treasurer of the Chicago Regional Council, said he looks forward to building a long and productive working relationship with the rep-

resentatives, staff, instructors, contractors and members of the former St-Louis-Kansas City Carpenters Regional Council. "This reorganization presents real opportunities to increase our market share above and beyond our 70 percent target goal. It's a win for our signatory contractors, it's a win for the communities in which we live and work, and most importantly, it's a win for our members."

Perinar emphasized that the restructuring will not impact the terms of the current collective bargaining agreements, including the payment of wages and fringe benefit contributions. SITE does not negotiate any Collective Bargaining Agreements with the Carpenters, but we have members who are signatory to local agreements.

No matter what the reasoning or speculation may be, it's clearly a power move that will be watched carefully by many contractors as well as other St. Louis Building Trades.

FROM THE SAFETY SIDE

As we approach the end of the construction season, November can be a very stressful time for many contractors and their employees. Unfortunately, the pandemic has also created many new challenges. Between labor shortages, project delays, and supply chain delays, the pressure to get work done quickly can grow and grow.

It's human nature to want to get a job done as quickly as possible. Getting a task done in a hurry gives you the ability to start your next task sooner or, in some cases, more time to do other things that may be more enjoyable. One of the best speakers I've ever heard talk about this subject is Eric Giguere.

In the fall of 2002, Giguere was working with a small crew to install a sewer line in upstate New York. Giguere was working in a 6-and-a-half-foot-deep trench with no safety equipment. He stressed because it was a Friday, they were in a hurry to get done. Suddenly a digging operation damaged a draining tile and dumped water in the ditch; Giguere and his fellow laborer jumped in to scoop out the water. Giguere's coworker then climbed out to retrieve a piece of equipment while Giguere remained in the trench and began cleaning around the sides of the pipe. Moments later, the trench collapsed!

Miraculously, despite being trapped in the trench for about 10 minutes, Giguere survived the incident after receiving CPR from the crew operator and shocks from emergency personnel. However he stressed during his presentation, ***"We take shortcuts [at work] to save time, but I lost 2 and a half years of my life."*** Giguere might have survived, but his life was never the same. From the first day home, when he was too terrified to have a blanket on top of him or to sleep in the dark. He claims he came out of that trench a different person – so different, in fact, that he and his wife were not able to endure the stresses of their new life. They eventually divorced.




Injuries due to time pressure are most often the result of a conscious or semi-conscious decision on the work-

er's part to circumvent a known preventative measure to a known safety hazard. Being rushed can distract your attention from hazards you would normally recognize, just like in Giguere's case.

Apart from personal safety concerns, rushing can result in property damage, the need to redo a task you thought was already done, and mistakes that will make unhappy customers. This is a time when you should be thinking about safety at a higher level.



There are many different things we can all do on the job in order to avoid unnecessary risk for injury due to rushing around. Some quick best practices:

-  Proper planning of work activities. Plan out your work prior to starting it. Do you have all the tools, equipment, training, personnel, knowledge, time, etc. to get the task done safely?
-  Proper communication and respect between employees. Yelling, belittling, or being disrespectful is not an efficient way to get things done. This often results in unnecessary stress as well as individuals feeling like they need to rush around.
-  Take time to evaluate what you are doing. Take time to realize when you are rushing yourself. The pressure we feel to get a job done faster may just be created internally for no real benefit.

There are many reasons why an individual may feel like they need to perform work faster. It may come from an external source such as a boss or it may be created internally by the individual. No matter the source, too much pressure to get a job done faster will result in more exposure to hazards. Eventually, the push to get work done faster will result in someone being injured.



2071 Exchange Dr.
St. Charles, MO 63303
(314) 966-2950
Fax: (314) 966-2999

President

Mike Steiniger - Kuesel Excavating Co.

Vice President

Pat Moriarity - Concrete Strategies, LLC

Secretary/Treasurer

Chris Gottman - Millstone Weber, LLC

Executive Director

Jeremy Bennett

WWW.SITESTL.ORG

UPCOMING EVENTS

| | |
|----------------|--|
| Tues., Oct. 26 | LUNCH 'N' LEARN SITE Improvement Association Training Room |
| Thur., Oct. 28 | JOINT SITE/APWA LUNCHEON Orlando's - Dorsett |
| Tues., Nov. 30 | FIRST AID/CPR/AED TRAINING COURSE SITE's Training Room |
| Thurs., Dec. 9 | HOLIDAY HAPPY HOUR Bogey Hills Country Club |
| Wed., Jan. 12 | GENERAL MEMBERSHIP MEETING Location to be determined |

Visit sitestl.org for future event updates or to register for upcoming events.