



SITE IMPROVEMENT ASSOCIATION HONORS FRANK MARCHESI SR.

SITE Improvement Association, for only the eleventh time in its 55-year history, has awarded one of its members with its highest recognition, the President's Award. Frank Marchesi Sr., of Bi-State Utilities, received the President's Award for his years of service to the organization.

The award is given to a SITE member whose outstanding guidance, foresight, time and leadership contributions have assisted SITE Improvement Association in reaching and maintaining its role within the construction industry.

As Board President, Mike Steiniger decided to recognize Mr. Marchesi. "Frank is an individual who gives so much of his time and expertise to the organization, often working behind the scenes to not attract attention," said President Mike Steiniger, "This award is just a small token of the membership's appreciation of his service in helping the association grow and better serve the construction industry in eastern Missouri."

SITE IMPROVEMENT ASSOCIATION NEWSLETTER

TABLE OF CONTENTS

**Executive Director's
Column - P. 3**

Legislative Report - P. 4

**2021 Holiday
Happy Hour - P. 6**

Utility Strike Webpage - P. 8

Labor Report - P. 10

The announcement of the award at SITE's Holiday Party was a surprise to Marchesi. "We didn't tell him beforehand that he was getting the award," said Jeremy Bennett, Executive Director of SITE. "His family and co-workers were all informed about it and attended the Holiday Party. It was great having everyone there to share in the moment. Frank was definitely shocked."



Pictured left to right: Kim Connell, Eileen Jerome, Frank Marchesi Sr., Ruth (Peanut) Marchesi, and Frank Marchesi Jr.

Bi-State Utilities joined SITE in 1993. Marchesi has served on SITE's Board of Directors for six years, was chairman on the Management Seminars Committee for 18 years, continues to serve on the Laborers Apprenticeship Committee and Training Fund since his appointment in 2010. Frank has represented the association during Operating Engineers Local 513 negotiations and spearheaded the Relocation Committee when SITE was seeking a permanent office location. "Frank attends all his committee meetings, trust fund meetings, membership meetings, etc. Never once did Frank call me to cancel or say he couldn't attend a function," Bennett said. "That level of dedication is hard to find these days with how busy work and personal life can be. I also want to thank Frank's wife, Peanut, for supporting him and the Association through all these years."

Past recipients of the award were Joe Barbagallo, Barbagallo Grading in 1991, the first recipient of the President's Award; Ron Schaefer, Schaefer-Meyer Grading, Ken Karsten, Karsten Equipment Company, Bob Morice, Nor Vel Construction, Ray Daub, Kirkwood Excavating, Mark Bussen, Bussen Quarries, Joe Hoette, Hoette Concrete Construction, Mike Jerome, Bi-State Utilities, Charlie Bollmeier, C.E. Bollmeier Company, Joe Leritz, Leritz Contracting/Busy Bee Paving and now Frank Marchesi Sr.

Congratulations Frank on a well-deserved recognition.

WELCOME TO SITE'S NEWEST MEMBERS



CONCRETE DIVISION

Macon's Concrete Services

146 Mohican Trail

St. Charles, MO 63304

Kyle Macon

(636) 328-8228



LANDSCAPING DIVISION

Double Image Companies, Inc.

1724 Flint Hill Park Land

Wentzville, MO 63385

Jack Grubbs

(636) 639-2094



SPECIALTY DIVISION

D&D Sealcoating & Striping

12703 Pennridge Dr., Ste. B

Bridgeton, MO 63044

Nate Shaeffer

(314) 312-2329



ASSOCIATE MEMBER

Roadbuilders Machinery & Supply

1001 S. 7th Street Trafficway

Kansas City, MO 66105

Travis Gentry

(913) 371-3822



EXECUTIVE DIRECTOR'S COLUMN

JEREMY BENNETT

It's amazing how quick the year goes by, and in that short time, SITE's staff and membership accomplished quite a lot. I could recap all the accomplishments but would rather take this opportunity to recognize some individuals.

Thank you to SITE Board President Mike Steiniger. Mike is term-limited from the Board and we are grateful for the years he spent as a director representing the Earthmoving Division and as Board President. Mike's been an excellent communicator and leader for the organization, helping SITE through COVID and my transition into the Executive Director's role. When you see Mike, thank him for his service.

Thank you to Board Member Joe Leritz. Joe is also term-limited and will be stepping aside from SITE's Board. Joe has served the last 14 years on the Board as an Asphalt Division representative and was not shy about voicing his opinions on the various issues SITE members face. Joe has helped this association grow from the frontlines and behind the scenes. When you see Joe, also thank him for his service.

Thank you to Chris Davis. Chris will be leaving SITE at the end of the year to take an executive role in his hometown of Springfield, Ill. Chris did a great job forging new political relationships and assisting in minority contractor efforts on behalf of our members. The highway funding bill was a highlight for Chris and for our entire membership. Chris invested his time and worked collaboratively with industry partners to see the bill pass the finish line. I wish Chris success and happiness in his new role.

Thank you to Brendan Davis. Brendan gave his time to the Association up until his passing in late November. As he battled with cancer over four years, he also actively helped the YES group grow in membership size, helped rebuild a dilapidated park in Berkeley, Mo., assisted with leadership training and more. Rest in Peace Brendan.

Thank you to Angie Wheeler. Angie holds the Chair position for the YES Steering Committee and is term

-limited. She has done an excellent job of growing the group, planning events and training opportunities. She has given her time and shared her resources to the park rebuild in Berkeley and navigated the group through COVID with a virtual duck hunt fundraiser to keep funds coming in for future use. Thank you, Angie, for your service and leadership.

A huge thank you goes to SITE's staff members: Leah, Rhonda, Chris, and Aaron. The amount of work they perform to organize meetings, events, email blasts, marketing material, and committee meetings goes unseen by many of the members, but I witness it every day and appreciate all their hard work, ideas and efforts to make this Association the very best for the members they serve. Thank you all very much.

Thank you to Frank Marchesi Sr. for all your time, knowledge, and resources you give to SITE. We know you were surprised to receive the President's Award, but you are most deserving. Thank you again for all your contributions.

Congratulations to our new Board Members, Matt Clark (Plattin Creek Excavating), elected to the open Earthmoving Division seat, and Chris Boeger (Leritz Contracting/Busy Bee Paving), who was elected to the open Asphalt Paving Division seat. The Board members have spoken, and your new Executive Committee for 2022 are the following: President – Pat Moriarity (Concrete Strategies, Inc), Vice President – Kevin Keenoy (GS Grinding Services), and Secretary/Treasurer – Steve Roden (Roden's Landscaping). Congratulations to all on your successful elections.

I wish all SITE members and their families peace and joy through this holiday season and a Happy/Healthy/ Prosperous New Year!



LEGISLATIVE REPORT

BY CHRIS DAVIS



Legislators officially return to Jefferson City on January 4 to begin the 2022 Legislative Session. However, the session unofficially began on December 1, when legislators are allowed to pre-file legislation to be considered during the session. There were 460 House Bills and 325 Senate Bills filed on the first day of pre-filing.

Of particular interest to SITE is HB 1594, filed by Representative Sara Walsh (R-Ashland), to repeal the Motor Fuel Tax increase that was enacted this year. Representative Walsh was an outspoken opponent of SB 262, the enacting legislation this year, and has announced her intentions to run for Congress in 2022 in Missouri's 4th Congressional District. While HB 1594 will certainly require SITE's attention next year, SITE can't imagine the Senate President Pro Tem, Dave Schatz (R-Sullivan), allowing the repeal of his career legislative priority and achievement.

SITE intends to continue to pursue legislation in 2022 to enhance the Missouri One-Call Statutes. The last two years, has introduced legislation to hold utility owners accountable for inaccurate or failure to locate underground facilities, in compliance with the law. SITE has spent considerable time meeting with utility owners to find consensus on the growing issue. In 2021, during a hearing of the House Utilities Committee, legislators urged the construction community and utility owners to reach an agreement on the legislation. While talks have been productive, the practical problem, in the field, continues to get worse. The issue is only going to be exacerbated by substantially increased state and federal infrastructure funding.

In addition, SITE has assembled a working group to pursue potential legislation to standardize the Oversized/Overweight (OSOW) Transportation regulations in Missouri. Even though MoDOT recently updated the OSOW Rules, many regulations remain inconsistent with border states, through which many SITE members transport heavy equipment. Much of Missouri's unwillingness to update these regulations is a result of its aged and dilapidated infrastructure, roads and bridges unable

to support these loads. Regardless, SITE, led by Matt Kelpo, is compiling information on regulations that need to be updated for consistency with bordering states.

SITE has been busy this fall reviewing St. Louis County Concrete specifications. These standard construction specifications are reviewed every five to six years for updates and necessary changes. SITE is fortunate to have the trust of St. Louis County to participate in this review and offer comments and specific recommendations. SITE and St. Louis County expect to finalize this process in early 2022 for the construction season.



FEDERAL VACCINE MANDATES

A U.S. district court in Georgia halted the Biden administration's vaccine mandate for federal contractors in December, writing that the president likely exceeded his authority. President Biden all but conceded that the mandate required legislative action when it was issued in September. However, the President unilaterally issued the mandate, regardless, in an effort to compel increased vaccination rates.

The U.S. District Court for the Southern District of Georgia said the Associated Builders and Contractors, a national trade group that represents the construction industry, are likely correct that President Joe Biden exceeded his authority under the Procurement Act when he issued the mandate.



"In its practical application, it operates as a regulation of public health," District Judge R. Stan Baker wrote in the order. "It will also have a major impact on the economy at large, as it limits contractors' and members of the workforce's ability to perform work on federal contracts. Accordingly, it appears to have vast economic and political significance," Baker wrote.

The court said the mandate is "costly, laborious and likely to result in a reduction in available members of the workforce."

The federal contractor mandate is more strict than an OSHA mandate on large employers (with greater than 100 employees). However, the federal contractor mandate allows alternative safety measures for unvaccinated employees, including mask requirements or regular testing.

The federal contractor mandate has been a significant source of worry for many SITE contractors, particularly early after its issuance, as its applicability was uncertain. SITE requested guidance from MoDOT on the mandate's application to MoDOT projects with federal funds. Early analysis seemed to indicate that Federal Highway Administration funds were grants to state Departments of Transportation, and therefore not direct federal contracts. However, guidance also indicated that the mandate applied to all contracts to which Davis-Bacon wage requirements applied. SITE was unable to obtain confirmation.

Ultimately, MoDOT finally issued a statement that MoDOT contractors are not federal contractors but are contracted with the State of Missouri on projects that

may or may not have federal funding. MoDOT indicated that FHWA had not issued any directive to the Agency or its contractors indicating a required process for vaccination verification. If the mandate was applicable, federal contractors were given guidance on the process for how verification of vaccinated employees would be made. There were no such directives from FHWA or any other federal agency stating that the executive order pertains to MoDOT (or local transportation) construction projects. Therefore, unless there are additional or subsequent Executive Orders or Laws enacted, MoDOT will not require any proof of vaccination or waivers for any contractor workers, subcontractors or suppliers.

Regardless, many other SITE members are federal contractors or subcontractors, either with Army Corps of Engineers or National GeoSpatial Agency. The December 7 federal court ruling provides those contractors with relief from the mandate.

An OSHA vaccine mandate on large employers with greater than 100 employees was put on hold in November by the 5th U.S. Circuit Court of Appeals. This caused OSHA to suspend implementation and enforcement of the Emergency Temporary Standard. Since then, the Senate on December 7 voted to block the OSHA vaccine mandate on large private employers. The vote was largely symbolic, as it faces an uphill battle in the House of Representatives and would certainly be vetoed by the President, should the legislation make it that far. However, the vote sends a strong message to the courts, who ultimately will decide the mandate's fate. Executive overreach and the separation of powers is a central tenant of the lawsuits attempting to block the mandate.

Both the OSHA Emergency Temporary Standard and the federal contractor mandate are ultimately expected to be overturned by the Supreme Court, should the Biden administration pursue the appeals process that far. However, time will tell. In the meantime, employers are left with uncertainty about an already fragile workforce.

SITE APPRECIATES THE SUPPORT OF THESE COMPANIES

Barrier
Concrete
Steel
Temporary Traffic Control
Full Service
Rental
Sales
Pavement Marking
Full Service
Temporary
Permanent
Removals
Marker Install
Material Sales

TRAMAR
CONTRACTING, INC.

DBE CERTIFIED CONTRACTOR
3051 Merchantile Ind. Dr.
St. Charles, MO 63301

636-255-0808
fax 636-255-0719
cell 314-852-5088

Hawkins Construction and Flat Work, LLC
Bob Hawkins, President

223 O'Fallon Plaza
O'Fallon, MO 63366

636-409-1115 office
314-267-9785

bob@hawkinsconstruction.net
website: www.hawkinsconstruction.net

ESTK
CRAIG DIERKING
OFF-HIGHWAY SALES SPECIALIST

Office: 314-256-5302
Mobile: 314-337-8894
420 East Carrie Avenue
Saint Louis, MO 63147
cdierking@estk.com

RedDOT
Eberspächer
AFEX
FIRE SUPPRESSION SYSTEMS

PAT KELLY
EQUIPMENT CO.
FAMILY OWNED SINCE 1976

Celebrating 45 Years!
1976 2021

NEW HOLLAND CONSTRUCTION
NATIONAL CRANE

NEW & USED EQUIPMENT | PARTS | RENTAL | SERVICE | SUPPLIES | TOOLS

314-895-9500 | PATKELLY.COM

BRIDGING AMERICA'S COMMUNITIES
THAT'S THOMAS PRIDE.

Thomas Industrial Coatings, Inc. is a multi-certified industrial painting and coatings contractor dedicated to quality, safety, and efficiency. We take great pride in our work, and it shows on every job we do across the country.

thomasindcoatings.com (636)475-3500

For career opportunities please visit
thomasindcoatings.com/careers

KOHR'S
TRUCK & AUTO REPAIR INC.
www.kohrstruck.com
Kathy

636-240-7935 615 Arrow Ln O'Fallon, MO 63366

NTS NATIONAL TRENCH SAFETY

Dee Deslatte
Branch Sales Manager

Cell: 314-910-0067
Email: DeeDeslatte@ntsafety.com

"THE TRENCH & TRAFFIC SAFETY SPECIALIST"
RENTALS • SALES • SERVICE • TRAINING

Mississippi Valley Equipment Company
Pile Driving & Drilling Equipment

Call Ken or Bob
www.mve-stl.com
(314) 869-8600 • (800) 325-8001

1198 Pershall Road • St. Louis, MO 63137

Gregory A. Smith
President / Chief Executive Officer

636.970.0440 office
greg.smith@1stadvantagebank.com

1st Advantage Bank
Community Minded, Technology Driven

240 Salt Lick Road
St. Peters, MO 63376
1stAdvantageBank.com

ESTK
DON JACOBS
SALES REPRESENTATIVE

Office: 314-256-5315
Mobile: 314-810-6325
Address: 420 E. Carrie Ave.
St. Louis, MO 63147
Email: djacobs@estk.com

AUTO CRANE
IMT
An Oshkosh Corporation Company
CM TRUCK BEDS

SITE APPRECIATES THE SUPPORT OF THESE COMPANIES

Insurance / Surety Bonds
for the Construction Industry



**MARSH & MCLENNAN
AGENCY**

Pete Mohs

314-374-6136

Pete.Mohs@MarshMMA.com

marshmma.com/stl



MATT RESSLER
SALES REPRESENTATIVE

Office: 314-256-5334
Mobile: 314-304-1005
420 East Carrie Avenue
Saint Louis, MO 63147
mressler@estk.com

READING
— NO BODY BETTER —



Rick Scharf
Owner

Specializing in Industrial, Commercial, and Structural Concrete
www.scharfstl.com

Cell (314) 280-4000
Office (314) 869-0060
Fax (314) 869-0067

119 Didion Suite B.
St. Peters, MO 63376
Email: scharfconstruction@hotmail.com



**Your Best Options for Equipment Sales,
Rentals, Parts & Service**

David Kedney

Vice President of
Sales & Marketing

2300 Cassens Dr., Fenton, MO 63026
Office: 636-343-9970
Cell: 314-412-8567
dkedney@lubyequipment.com



**NATIONAL
TRENCH SAFETY**

Brian Stark
Outside Sales

Cell: 314-365-2295
Email: BrianStark@ntsafety.com

"THE TRENCH & TRAFFIC SAFETY SPECIALIST"
RENTALS • SALES • SERVICE • TRAINING



www.rolandmachinery.com

James M. Jesuit

Vice President/
General Manager
St. Louis Division

KOMATSU

Phone: 314-291-1330

Fax: 314-291-8050

Cell: 314-378-2680

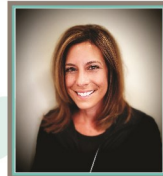
Email: jjesuit@rolandmachinery.com

4670 Crossroads Industrial Dr
Bridgeton, MO 63044

Screen Printing Embroidery Safety Apparel

lizmark

BRANDED SOLUTIONS



LIZ TILLMAN

liz@lizmark.com

O: 314-394-0901

C: 314-706-1275



BRANDED SOLUTIONS SINCE 1998

Business Gifts Tradeshow Giveaways



INFRASTRUCTURE SOLUTIONS

1215 Dunn Road
PO Box 38901-0901
St. Louis, MO 63138
collinsandhermann.com

Mike Shepard

PRESIDENT | CHIEF OPERATING OFFICER

mshepard@collinsandhermann.com

office: (314) 869-8000 | mobile: (314) 267-0617 | fax: (314) 869-8498



PAUL KEIL
SALES MANAGER

Office: 314-256-5331

Mobile: 314-565-8370

Address: 420 E. Carrie Ave.
St. Louis, MO 63147

Email: pkeil@estk.com



READING
— NO BODY BETTER —



**Additional Ad Space Available -
contact Leah (314) 966-2950**

HOLIDAY HAPPY HOUR

Nearly 150 SITE members, spouses, and special guests gathered at Bogey Hills Country Club on December 9 to celebrate the holidays! Thank you to all who attended, donated and made the evening a night to remember.



Many thanks to all who donated to the Saint Louis Crisis Nursery Holiday Hearts Program. Nearly \$4,100 in cash and gift cards were collected to give Crisis Nursery families a safe and happy holiday season.



The President's Award is the highest honor given at SITE, awarded to only 11 individuals in SITE's 55-year history. The most recent recipient, Frank Marchesi, was welcomed by previous winners Joe Leritz, Mark Bussen, Charlie Bollmeier, Mike Jerome and Joe Hoette (pictured left to right). Congratulations, gentlemen.



JOINT SITE APWA LUNCHEON

Who's ready for soccer in the Lou?? SITE and American Public Works Association (APWA) joined together for a joint General Membership Meeting luncheon held on Thursday, October 28 at Orlando's in Maryland Heights. The topic was the St. Louis City Soccer Stadium. A \$457.8 million, 22,500-seat soccer-specific stadium for the St. Louis City SC, the city's expansion Major League Soccer franchise. The guest speakers were Tim Gunn and John Grib, who were both from Alberici's MLS project executive team. The speakers shared time-lapse videos and discussed modeling techniques of the planning and building process, scheduling and material challenges, unique stadium characteristics to St. Louis, and collaboration and execution from leadership team to skilled workers.



Between both associations there were 170 attendees.

M/WBE MIXER

SITE hosted a new Happy Hour in November in an effort to bring together current SITE members with diverse business owners. The November Happy Hour at Ferguson Brewing Company was attended by more than 60 individuals from the construction industry. The crowd included SITE members, Certified M/WBE Contractors, and diversity and inclusion professionals from St. Louis County and St. Louis Airport Authority. The purpose of the event was to introduce M/WBE firms to SITE and SITE members that bid as prime contractors on MSD, St. Louis County, and MoDOT projects and expand relationships across the St. Louis construction community. SITE is hopeful to obtain a few new members from the event.

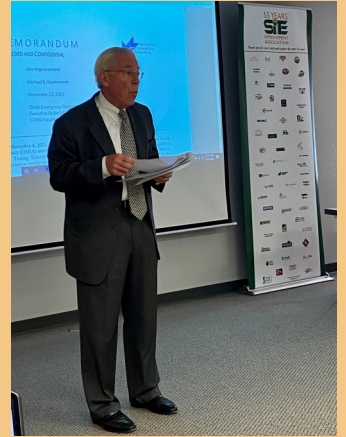


VACCINE MANDATE SEMINAR

On November 23, SITE hosted an informational seminar on the Biden Administration's

COVID-19
vaccination
mandate.

More than
50 people
attended the
seminar ei-
ther virtually
or in person.
SITE's labor



attorney, Michael E. Kaemmerer, provided a legal summary of Executive Order 14042 and the OSHA Emergency Temporary Standard (ETS) covering COVID-19 vaccinations and testing.

This seminar provided an opportunity for SITE's members to learn about the new requirements. If you would like to re-view a copy of the presentation outline, it is currently posted on SITE's website under the "COVID-19 Vaccine Mandate Seminar" event on the calendar.



UTILITY STRIKE

We are proud to unveil **UTILITY STRIKE** the newest feature on our website. We specifically designed it to be a useful, one stop shop resource for everything related to underground utilities. It's got step by step checklists, incident reports, a library database, a current USIC employee contact list and so much more! **Check it out!**



COULD YOUR SON OR DAUGHTER BENEFIT FROM A \$2,500 SCHOLARSHIP?

Accepting applications now through March 25, 2022!

Scholarship applications for high school seniors and/or college students are now available. Applicants must be the child or step-child of a full-time employee or officer of a SITE contractor or associate member in good standing. Such employee or officer shall be employed at the employer's facility located within the St. Louis metropolitan area. Applications for scholarships and the 2022 Eligibility Rules & Application Process have been mailed and emailed to all member companies and are available at www.sitestl.org on the front page listed under 2022 Scholarship Information. Contact Leah at (314) 966-2950 should you have any questions.






2022 INVESTMENT IN INFRASTRUCTURE EXPO

The 2022 Investment in Infrastructure Expo is quickly approaching and will be held in person at the St. Charles Convention Center on Tuesday, February 22. New infrastructure-related construction projects to be bid in the St. Louis metropolitan area in 2022 will be unveiled for interested contractors and the public. The cost is \$35 per person to attend. Vendor space and sponsorships are available. Contact Rhonda or visit SITE's website for details.

The Expo presentations will begin at 1:30 p.m. The trade show and networking session will then be held from 3:45–6:00 p.m. in the exhibit hall, with refreshments available at no additional cost.

Presenters include the following:

-  County Highway Directors (St. Louis County, St. Louis City, St. Charles County, Jefferson County, Franklin County)
-  Federal Reserve Bank of St. Louis
-  Great Rivers Greenway
-  Metropolitan Sewer District (MSD)
-  Missouri Department of Transportation (MoDOT)
-  Regional Planning Commission (East-West Gateway, Booneslick Regional Planning, and Meramec Planning Commission)
-  U.S. Army Corps of Engineers

Watch for more information in the coming weeks.

THE YOUNG EXECUTIVES OF SITE

YES has been busy this winter succession planning. Many of our Steering Committee members are aging out or moving on in their professional careers. The Steering Committee is made up of eight individuals from the YES membership who are highly active in YES and SITE and exhibit exceptional leadership prowess. They represent four contractor members and four associate members of SITE.

Steve Groene of TraMar Contracting is assuming the Chair of Steering Committee. Angie Wheeler with United Rentals, the previous chair, will be Vice Chair in 2022. Associate member Craig Bussen will be stepping down as a longtime member of the Steering Committee and will be replaced by Jordan Lampkin, of People's Savings Bank. Ken Van Bree will also be departing and will be succeeded by Rob Carr, also of RubinBrown. One additional associate member is being pursued. Contractor member John Hoette has resigned from the Steering Committee and is being replaced by Kevin Betley with DJM Ecological Services. Chris West, with NB West Contracting, and Nick Rothe of Budrovich will be staying on the Steering Committee in 2022.



SITE and YES are tremendously saddened by the death of Steering Committee Member Brendan Davis. Brendan was a very active member of SITE and insightful leader as a valued member of the Y.E.S. Steering Committee. He was an employee of AgriCycle, Inc. and the nephew of past SITE Board Member Patrick Geraty. Brendan was

always eager to lend his time, attention and talents to SITE despite his own health struggles. Ultimately, Brendan succumbed to aggressive cancer that he fought valiantly over the last four years. He will be missed. May God hold Brendan in perpetual peace.

Mark your calendars for the first Y.E.S. Happy Hour of 2022. The Young Executives of SITE will gather on Wednesday, January 26 from 3:00-6:00 p.m. at Saratoga Lanes in Maplewood. Come on out on January 26 and enjoy a beverage and some bowling with the Young Executives of SITE. This event is open to all of SITE's membership and will be a great social event to kick off the year.



CONTRACTOR MEMBERS

Concrete Division

Alfred F. Mullen Concrete Contracting Co.	Mike Mullen	(314) 966-0177
Birkemeier Construction, Inc.	Jeff Birkemeier	(636) 978-8892
Boling Concrete Construction	Cindy Boling	(314) 772-6300
Builder's Bloc Contracting Services, LLC	Kevin Deptula	(314) 336-0200
Bumb Construction, Inc.	Dave Bumb	(314) 291-4284
Byrne & Jones Concrete	Carl Rouse	(314) 567-7997
Concrete Strategies, LLC	Pat Moriarity	(314) 595-6300
Contegra Services, LLC	Jim Mundy	(618) 219-4895
Fenix Construction Company	Steve Ladenberger	(314) 892-4700
Hawkins Construction and Flat Work LLC	Bob Hawkins	(636) 409-1115
HF Flatwork	Carl Hines	(636) 262-2684
J.S. Aubuchon Concrete Company	Jerry Aubuchon	(636) 661-5655
Joint Sealing Solutions	Blake Gamber	(314) 229-1460
Karrenbrock Construction, Inc.	Roger Karrenbrock	(636) 828-5420
Macon's Concrete Services	Kyle Macon	(636) 328-8228
Musselman & Hall Contractors, LLC	Keith Ahal	(314) 739-1142
O'Basuyi Construction, LLC	Patrick O'Basuyi	(314) 462-0620
Oreo & Botta Concrete Company	Tom Milne	(314) 427-3800
R. V. Wagner, Inc.	Dan Wagner	(314) 892-1600
Scharf Construction Co., LLC	Rick Scharf	(314) 869-0060
Spencer Contracting Company	Tony Spencer	(314) 843-5166
T and T Contracting Company	Malcom Thompson	(314) 267-3114
Thick Concrete	Matt Williams	(314) 282-2516
Vee-Jay Cement Contracting Company, Inc.	Stephen Krieger	(314) 351-3366

Earthmoving Division

Ballmann Earthworks, LLC	Jon Ballmann	(636) 236-4242
Bloomsdale Excavating Co., Inc.	Scott Drury	(573) 483-2564
Brandt Contracting, Inc.	Sedrick Brandt	(636) 352-4818
Budrovich Excavating & Contracting	Jeff Budrovich	(314) 892-3030
Busken Construction Company	David Busken	(314) 630-8866
Interstate Equipment, Inc.	Steve Lawrence	(636) 387-7700
Jones Grading & Excavating, Inc.	Noel Jones	(314) 647-1697
K. J. Unnerstall Construction Company	Kurt Unnerstall	(636) 239-2028
Kendall's Hauling, LLC	Kendall Davidson	(314) 517-0905
Kuesel Excavating Co., Inc.	Mike Steiniger	(636) 978-3478
McFry Excavating, Inc.	Doug Pavis	(636) 386-4779
Nor-Vel Grading & Excavating, LLC	Matt Beckmann	(636) 387-1888
Plattin Creek Excavating, LLC	Matt Clark	(314) 287-1848
R & K Excavation, Inc.	Kyle Faulkner	(636) 937-1268
Rich Gullet & Sons, Inc.	Randy Gullet	(636) 271-2327
Sellenriek Grading Company, Inc.	Drew Sellenriek	(636) 938-9299
Semke Grading, LLC	Brenda Semke	(636) 250-4225
Town & Country Grading, Inc.	Alan Laughlin	(636) 475-7887

Highway/Bridge Division

AMCON Municipal Concrete, LLC	Paul Amelong	(636) 379-9396
Gershenson Construction Co., Inc.	Ed Gershenson	(636) 938-9595
Krupp Construction, Inc.	John Meiner	(636) 391-8844
M & H Concrete Contractors, Inc.	Rick Matteson	(636) 379-9682
Millstone Weber, LLC	Thom Kuhn	(636) 949-0038
N.B. West Contracting Company, Inc.	Jim Fitzgerald	(314) 962-3145
Pace Construction Company	Ryan Casey	(314) 524-7223
Pavement Solutions, LLC	Matt St. John	(636) 970-2727

Asphalt Paving Division

Accurate Asphalt Paving Co., Inc.	Dan Lucas	(636) 343-5199
Byrne & Jones Construction	Brian Goggins	(314) 567-7997
Diversified Contractors	Brad Laramie	(314) 638-2500
E. Meier Contracting, Inc.	Rod Fain	(636) 300-0908
Ford Asphalt Company, Inc.	Brad Fritsche	(314) 291-2600
Jokerst Paving & Contracting	Grant Jokerst	(636) 937-7101
L. Keeley Construction	Matt Taylor	(314) 421-5933
Leritz Contracting, Inc./Busy Bee Paving, Inc.	Joe Leritz	(314) 821-2615

Landscaping Division

A. Waldbart & Sons Nursery	Jay Behle	(314) 895-4589
Baxter Farms & Nurseries	Adam Guthrie	(314) 542-9400
Conoyer Brothers Landscaping, Inc.	Craig Conoyer	(636) 397-7217
DJM Ecological Services, Inc.	Doug Bauer	(314) 478-2388
Double Image Companies, Inc.	Jack Grubbs	(636) 639-2094
ECO Constructors	Shawn Garland	(636) 561-3158
Greenspace Landscaping	Stephen Kelly	(314) 895-8860
Keeven Brothers Landscaping, Inc.	Mike Keeven	(314) 837-6948
LanDesign, LLC	George Tucker, Jr.	(636) 332-4500
Midwest Turf Contractors	Charity Keeven	(636) 926-9988
Professional Irrigation Systems	Jon Lauer	(636) 695-7800
Roden's Landscaping, Inc.	Steve Roden	(636) 561-3947
ROSCH Midwest, LLC	Scott Rozier	(636) 519-7770
Schaefer-Meyer Seed-Sod Div. 1, Inc.	Greg Meyer	(636) 947-7173
Site System Landscaping, LLC	Kathy Roden	(636) 332-7333
TerraScape Landscape Constructors	Eric Hogan	(314) 581-8576

Sewer/Utility Division

Aztec Construction Specialties, LLC	Hector Maldonado	(618) 223-9936
Bates Utility Company, Inc.	Tim Bates	(636) 939-5628
Bi-State Utilities Company	Mike Jerome	(314) 209-0202
C.E. Bollmeier Co., Inc.	Bill Bollmeier	(314) 298-7885
Castle Contracting, LLC	Brian Carlson	(314) 421-0042
David Mason + Associates	Spencer Mason	(314) 534-1030
Fred M. Luth & Sons, Inc.	Mike Luth	(314) 771-3892
Girdner Contracting LLC	Bridget Girdner	(314) 605-4301
J & J Boring, Inc.	Jennifer Bouquet	(636) 566-6766
J.H. Berra Construction Company, Inc.	Frank Berra	(314) 487-5617
J.W. Bommarito Construction Co., Inc.	Joe W. Bommarito	(314) 353-0104
Karrenbrock Excavating LLC	Doug Bierman	(636) 828-5420
Kelpe Contracting, Inc.	Tom Kelpe	(636) 458-1400
Luther's Supply, LLC	Luther Boykins	(314) 385-6499
Poeling Construction	Shane Poeling	(636) 463-2437
S & S Utility Contracting Company, Inc.	Danny Purler	(314) 220-5161
SAK Construction	Jerry Shaw	(636) 385-1500
Semke Pipe Works, Inc.	Brenda Semke	(636) 250-4225
Southern Ditching & Excavating Company	T.J. Moor	(636) 441-1112
TaylorMade Construction, LLC	Andre Taylor	(314) 868-1005
Unnerstall Contracting Company, LLC	Steve Unnerstall	(636) 257-3003
Williams Tunnelling Industries, Inc.	Edison Williams	(314) 925-8649
XL Contracting, Inc.	Ken Novel	(636) 970-2710

Specialty Division

AgriCycle, Inc.	Patrick Geraty	(636) 861-3344
All Star Concrete Pumping	Keith Dennis	(636) 475-9539
Badger Daylighting Corporation	Benji Koonce	(314) 954-7192
C2 Service Group, Inc.	Lorri Keenum	(636) 283-5031
Cherokee Hauling, LLC	Mike Tallis	(314) 393-7112
CNC Foundations, Inc.	Ray Van Amburg	(618) 213-8853
Collins & Hermann, Inc.	Mike Shepard	(314) 869-8000
D&D Sealcoating & Striping	Nate Shaeffer	(314) 312-2329
Drainscapes	Casey Graves	(314) 892-9888
Drilling Service Company	Sean Jackson	(314) 291-1111
Elastizell of St. Louis, Inc.	Jane Megown	(636) 225-4311
Fick Supply Service, Inc.	Dave Fick	(314) 560-0146
George McDonnell & Sons Tuckpointing Co., Inc.	Tom McDonnell	(314) 739-0468
GS Grinding Services, LLC	Dave Grimes	(636) 474-1183
Hansen's Tree Service & Environmental Resources	Ken Byrne	(636) 379-1830
Ideal Landscape Group	Dave Buckel	(314) 892-9500
J&R Concrete Services, LLC	Stephanie Johnson	(314) 596-2311
Kurtz Nursery and Topsoil	Matthew Kurtz	(636) 405-2667
McConnell & Associates Corporation	Greg Lucas	(314) 962-1920
MW Drone Photography	Mark Wheeler	(314) 398-2569
Native Landscape Solutions, Inc.	Chuck Caverly	(314) 544-7918
Premier Demolition, Inc.	Bill Buell	(314) 645-5566
Reinhold Electric, Inc.	Jerry Reinhold	(314) 631-1158
Retaining Wall Solutions	Michael Yount	(314) 842-8200
Supplied Industrial Solutions	Stephen Brock	(618) 452-8151
Thomas Industrial Coatings, Inc.	Don Thomas	(636) 475-3500
Traffic Control Company	Joe Backer	(636) 225-7800
TraMar Contracting, Inc.	Peggy McGrath	(636) 255-0808
Two Alpha Contracting, LLC	Rhiannon Parisi	(636) 384-1296

November/December



ASSOCIATE MEMBERS

1st Advantage Bank	Greg Smith	(636) 970-0440	Kirby-Smith Machinery, Inc.	Matt Nelson	(314) 729-0125
24/7 OnSite Cameras	Nick Bartolotta	(314) 718-0453	Kohrs Truck & Auto Repair, Inc.	Harold Kohrs	(636) 240-7935
Acuity Insurance	AJ Gajdosik	(636) 287-2068	Lizmark Branded Solutions	Liz Tillman	(314) 394-0901
Advanced Drainage Systems	Brian Snelson	(618) 593-6135	Luby Equipment Services	David Kedney	(636) 343-9970
American Steel Fabrication, Inc.	Tim Thomas	(636) 475-7272	Luby Shoring Services, LLC	John Powell	(636) 660-7467
Archview Services	Tony Coco	(314) 474-7800	Magruder Limestone Company, Inc.	Jacob Fortner	(636) 528-4180
ASP Enterprises, Inc.	Don Thieman	(636) 343-4357	Mannino Truck Leasing, Inc.	Joe Mannino	(314) 393-0715
Bank of Springfield (BOS Bank)	Marty McCabe	(314) 888-6906	MayeCreate, LLC	Stacy Brockmeier	(573) 447-1836
BITCO Insurance Companies	Chris Demse	(314) 822-4446	Middendorf, Inc.	Allan Middendorf	(618) 540-8446
Bobcat of St. Louis	Mike Allen	(636) 225-2900	Mississippi Valley Equipment Company	Bob Clapsaddle	(314) 869-8600
Bussen Quarries, Inc.	Mark Bussen	(314) 894-8777	Missouri Petroleum Products Company	Mike Hartman	(314) 219-7305
Carmody and Associates, Inc.	Robert Carmody, Jr.	(618) 231-8899	National Trench Safety	Scott Emmitt	(314) 383-0504
CarsonAllaria Wealth Management	Joe Allaria	(618) 288-9505	Neenah Foundry Company	Brandon Ostendorf	(636) 928-1023
Central Power Systems	Chuck Bauers	(314) 427-4911	New Frontier Materials	Rusty Durbin	(314) 473-3434
Central Stone Company	Jeff Pullen	(314) 830-9000	Nu Way Concrete Forms, Inc.	Mike Townsend	(314) 544-1214
Champion Precast, Inc.	Joel Anderson	(573) 384-5855	OnSite Companies	Chuck Davis	(636) 519-0507
Charles L. Crane Agency Company	Frank Rebholz III	(636) 537-5641	Pacific GeoSource	Allen Akowicz	(636) 439-0431
Cintas First Aid and Safety	Annie Gitto	(314) 825-1369	Pat Kelly Equipment Company, Inc.	Brian Kelly	(314) 895-9500
Clayton Engineering Company, Inc.	Steve Quigley	(314) 692-8888	Peoples Savings Bank	Don Meyer	(636) 398-5600
CMIT Solutions	Barry Herring	(636) 925-9920	Providence Bank	Nick Brunnworth	(636) 397-3804
CMW Equipment	Larry Glynn	(314) 993-1336	Purple Wave Auction	Scott Broz	(636) 725-6737
Cogent Analytics	Joe Wayman	(314) 749-6153	Rackers & Fernandez, LLC	Sergio Fernandez	(636) 498-1900
Consolidated Pipe & Supply Company	Chris Hausmann	(636) 825-6678	Ritchie Bros. Auctioneers	Andrew Dillard	(618) 792-1670
Contech Engineered Solutions, LLC	Rob Richardson	(417) 459-7875	Roadbuilders Machinery & Supply	Travis Gentry	(913) 371-3822
Core & Main	Randy Bradley	(314) 432-4750	Rock Hill Quarries Co.	Bruce Dresser	(314) 968-2336
County Materials Corporation	Joel Gardner	(217) 544-4607	Roland Machinery Company	James Jesuit	(314) 291-1330
CSTK	Allen Lane	(314) 771-6666	RubinBrown LLP	Ken Van Bree	(314) 290-3429
Dan Althoff Trucking, Inc.	Dan Althoff	(636) 677-7772	Rudd Equipment Company	John Robinson	(314) 487-8925
Dewitt Insurance	Alex Toler	(314) 527-2522	Rush Truck Centers of Missouri, Inc.	Justin Demers	(314) 449-7200
Don Brown Chevrolet	Mike Kitchen	(314) 207-4471	Safety International	Douglas Sicking	(636) 498-4476
Energy Petroleum Company	Steve Madras	(314) 383-3700	Safety Training Resources	Jeff Viehmann	(314) 808-3502
Enterprise Bank & Trust	Brian Geen	(314) 543-3914	Sandberg, Phoenix & von Gontard, P.C.	Tony Soukenik	(314) 446-4279
EquipmentShare	David Meyer	(636) 459-8640	Schmersahl Treloar & Co.	Marianne Biangardi	(314) 966-2727
Erb Equipment Company	Gregg Erb	(636) 349-0200	SCI Engineering, Inc.	Karl Koenigsfeld	(636) 584-7991
Fabick CAT	Scott Crean	(636) 626-8948	Silver Eagle Construction Products, Inc.	Erik Thompson	(636) 240-6300
Federated Insurance	Cole Waddell	(316) 617-7880	Simpson Materials Company	Steve Simpson	(636) 343-4944
Fred Weber, Inc.	Tom Greco	(314) 473-3419	SmithAmundsen LLC	Daniel Peters	(314) 719-3766
G.S. & S.	Chris Hyams	(314) 298-8100	St. Louis Composting	Roy Gross	(636) 861-3344
Gateway Dredging & Contracting, LLC	Terry Bangert	(636) 665-5180	Stormwater STL LLC	Steve Polk	(314) 406-7655
Hanes Geo Components	Steve Wright	(636) 875-7317	Topcon Solutions	Terry Gammill	(816) 985-1791
Hayden Machinery LLC	Jeremy Hancock	(314) 550-1400	Traffic Management, Inc.	Josh Turk	(314) 309-5928
Heritage Petroleum, LLC	Mike Mabrey	(314) 504-3198	U.S. Bank	Sean Johnson	(314) 307-6256
Interstate Testing Services	Andy LaPlante	(314) 994-0641	United Rentals	Angie Wheeler	(314) 267-7621
ISCO Industries, Inc.	Shaun Parker	(314) 422-7234	United Rentals -Trench Safety	James Dickey	(314) 729-0003
J.D. Kutter	Kim Connell	(314) 444-4949	Vanguard Truck Centers	Dan Green	(618) 857-7625
J.W. Terrill, Inc.	Pete Mohs	(314) 594-2700	Vermeer Midwest, Inc.	Chad Van Soelen	(636) 532-2332
John J. Guilfoy & Associates, LLC	John Guilfoy	(314) 781-1122	Wallis Lubricants, LLC	Kati Douglas	(636) 271-0900
K & K Supply Inc.	Matt Williams	(636) 349-1141	Warrenton Oil Company	David Baker	(636) 456-3346
K & P Precast, Inc.	Tammy Daugherty	(636) 978-3111	Western Ready-Mix, Inc.	Mike Reed	(636) 519-1522
Kienstra Co.	Dan Bruns	(314) 994-1616	Wieser Concrete Products, Inc.	Drew Wieser	(618) 251-9210
Kienstra Precast, LLC	Steve Peery	(618) 482-3283	Winter Brothers Material Company	Ryan Winter	(314) 843-1400
			Workplace Synergy	Maureen Trompeter	(314) 473-4665

MAKE SITE WORK FOR YOU

Call on SITE members for the highest quality products and services

November/December

LABOR REPORT

BY JEREMY BENNETT

OPERATING ENGINEERS LOCAL 513 RETIREE WORK RESTRICTION

For signatory contractors who employ local 513 retirees, it appears the hour restriction will be lifted in January of 2022 to help with the labor shortage. This will help employers ease some of their burden but should not deter employers from investing in their workforce by hiring new apprentices.

UNION EMPLOYEE HEALTH CLINICS

Over the past few years, I have been working with the Cement Masons, Operating Engineers and Laborers Health and Welfare Funds to analyze stand-alone health clinics, similar to TAUCs, and the return on investment if the funds hired their own doctors/practitioners to offer health care to construction employees (versus the open market). The trustees on each of these funds have reviewed this model with a group called Activate Healthcare, who took this idea and made it a reality. Activate has created this similar model in other states and simply transplanted the blueprint here but for only construction employees.

The Cement Masons, Operating Engineers and Laborers have all signed contracts with Activate and are working together to leverage healthcare costs. So what does this all mean? It means there are now eight clinics available for your employees to access AT NO COST. These clinics allow individuals to walk in or schedule appointments without the waits. The nurse practitioners and doctors are not hired to quickly diagnose and medicate; their job is to give each patient the time they need to discuss anything and everything with the healthcare team. The clinic staff is well versed on each union's health plan and will assist each patient with specialized care, where to go, guide patients to in-network options, and ultimately help each patient to receive the best care possible. Labor and Management trustees are hopeful



this will be a recruiting tool for contractors and unions alike. More information on these clinics will be going out in the upcoming weeks. Please share with your union employees.

Contractor Wage Surveys –SITE continues to urge contractors to submit their work hours to the Department of Labor Contractor Wage Survey. In 2020, contractors' payroll staff did a nice job submitting hours, and because of their efforts, contract total package rates were very close to the Prevailing Wage rates posted in the 5 surrounding counties. If contractors can continue to submit hours, the contract total package rate will continue to be competitive in the area. As a reminder, all hours for 2021 must be submitted by the end of January. If hours are not submitted, there will be a large disparity in what an open shop contractor will have to pay on public works projects versus a signatory contractor. If your payroll department is not familiar with the contractors' wage survey, please feel free to reach out to SITE's office for guidance.

Holiday Pay - For contractors who are signatory to SITE's agreements, SITE wanted to make you aware that there are two contractual holidays (Christmas Day and New Year's Day) approaching quickly. Per SITE's Collective Bargaining Agreements, any work performed on Saturday, December 25 and Saturday, January 1, is to be paid double the hourly rate. If you have any questions, please contact Jeremy Bennett at SITE's office.



FROM THE SAFETY SIDE

Working in Cold Temperatures

As temperatures continue to drop in the St. Louis region, this presents a number of new risks and hazards to construction workers. One of those risks is muscle strains and sprains. As the muscles are exposed to cold weather, they lose heat and contract, causing them to tighten. Tightened muscles can more easily be pushed past their normal range of motion, which is when a muscle pull or strain occurs. Fortunately, these types of injuries can be easily avoided.

First and foremost, check the weather forecast for the day. What is the high and low temperature throughout the day? Is there a wind chill advisory? If so, develop a cold weather safety plan in advance to ensure that safety concerns are addressed in colder temperatures or when the wind chill is significant. Also, outside workers should schedule warm-up breaks.

Breaks are necessary for any working environment but become increasingly crucial when working in extremely cold conditions. Based on a four-hour work period, it is recommended that breaks of 10 minutes be taken once every two hours.

As wind chill increases, the amount of breaks needed will increase. These breaks are needed to help warm your body and minimize the risk of cold-related illnesses and injuries.

More importantly, dress in layers, especially with a wind-resistant outer layer. Protecting your body by dressing appropriately for cold weather is extremely important to prevent injuries caused by cold stress and muscle strains. Also wear warm and waterproof footwear. It is crucial to keep the feet warm and dry. Whether one or two pairs of socks is worn is an individual's choice. It is important that the socks worn are able to wick away moisture and fit comfortably inside of the boot.



When keeping yourself warm, it's important to not forget about sensitive areas like your nose, ears, fingers, and cheeks. Make sure the layers aren't too restrictive and provide enough ventilation, as tight clothing can reduce blood flow and circulation. Also be careful that your layers don't interfere with your PPE (personal protective equipment).

Lastly, the importance of a structured warm-up routine should not be underestimated when it comes to preventing injuries in cold weather. Warm-up exercises are crucial to any sports or fitness training program. However, they are also crucial in construction. Stretching is a means to avoid the most common body sprain/strain injuries. Stretching before you start work will make your job easier and help prevent injuries on the job.

When working in cold conditions, it's important for employees to be prepared for the work conditions. Per certain labor agreements, employees are responsible for suitable shoes and other apparel. Training and reminders should be a constant so workers can follow safe work practices to protect their health, especially while working in the cold.



2071 Exchange Dr.
St. Charles, MO 63303
(314) 966-2950
Fax: (314) 966-2999

President

Mike Steiniger - Kuesel Excavating Co.

Vice President

Pat Moriarity - Concrete Strategies, LLC

Secretary/Treasurer

Chris Gottman - Millstone Weber, LLC

Executive Director

Jeremy Bennett

WWW.SITESTL.ORG

SITE's office will be closed Friday and Monday, Dec. 24 and 27, in observance of Christmas and again on Friday, Dec. 31, in observance of New Year's Day.

UPCOMING EVENTS

Wed., Jan. 12

GENERAL MEMBERSHIP MEETING

Syberg's on Dorsett

Wed., Jan. 26

YES NETWORKING EVENT

Saratoga Lanes

Jan. 27 - Feb. 3

MANAGEMENT SEMINARS

Secrets Bahia Mita, Puerto Vallarta, Mexico

Tue., Feb. 22

INVESTMENT IN INFRASTRUCTURE EXPO

St. Charles Convention Center

Visit sitestl.org for future event updates or to register for upcoming events.