



2022 INVESTMENT IN INFRASTRUCTURE EXPO

The 2022 Investment in Infrastructure Expo at the St. Charles Convention Center was a successful kick-off to the 2022 construction season and for SITE. With over 400 attendees and more than \$2 billion in new infrastructure-related construction projects unveiled, the next few years look to be very busy for SITE members.

It was clear the construction industry was ready to meet in person. The presentation rooms were filled with attendees learning about upcoming projects and construction-related topics. The exhibition hall was filled with vendors, equipment dealers and construction industry professionals strengthening and forming new relationships. It was truly nice to be back in person. A special shout out to Lieutenant Governor Kehoe and his fantastic keynote speech. Kehoe is a true leader for the state of Missouri and an advocate for the construction industry.

Continued on page 8

SITE IMPROVEMENT ASSOCIATION NEWSLETTER

TABLE OF CONTENTS

**2022 Board of
Directors - P. 3**

**Executive Director's
Column - P. 4**

Legislative Report - P. 6

Expo Photos - P. 9

Labor Report - P. 10

2022 MEMBERSHIP RENEWALS

Despite COVID and its variants still being around after two years, SITE was able to bring membership back together in 2021 and what a great feeling that was! SITE will continue its efforts in 2022 to host in person meetings and events. Membership renewals were mailed out mid-December 2021. We have received renewals from 70 percent of membership already. If you have not received an invoice or if you have any questions, please contact Rhonda at rhonda@sitestl.org or call SITE's office at 314-966-2950. For those SITE members who have already renewed, Thank You. As for the SITE members who have not renewed yet, it's not too late!! Renewals received by April 1 will guarantee your placement in SITE's 2022-2023 Membership Directory. SITE is a great organization and cannot do it without you! So please remember to renew.

WELCOME SITE'S NEWEST MEMBERS



SEWER/UTILITY DIVISION

Bahr Hydroexcavation, LLC

1 Cedarbrook Lane

Festus, MO 63028

Leslie Bahr

(314) 809-1172



ASSOCIATE MEMBER

People's Capital and Leasing Corp.

360 Kingsbury Ct.

Highland, IL 62249

Mike Range

(618) 606-1661

YOUNG EXECUTIVES OF SITE

The Young Executives of SITE (Y.E.S.) will be holding their annual networking event at Saratoga Lanes on Thursday, March 31 from 3:00-6:00 p.m. The event is free to all Y.E.S. members who have paid their 2022 Y.E.S. dues and to current board members. All other members are invited to attend for \$40 per person. Email leah@sitestl.org or visit SITE's website to register.



If you are interested in joining Y.E.S., please visit SITE's website to fill out an application online, contact Rhonda via email at rhonda@sitestl.org, or call SITE's office at (314) 966-2950 for a membership application. Annual membership is \$25 per participant.

CONGRATULATIONS

The Missouri/Kansas Chapter of American Concrete Pavement Association (ACPA) awarded Amcon Municipal Concrete with an Excellence



in Paving award in recognition of the high-quality construction performed on the Claymont Estates, Denwoods, Islevew, Redondo and River Valley Drive Reconstruction Concrete Paving in Chesterfield, MO. The project has been rated the best Portland Cement Concrete Municipal Streets and Intersections (>30,000 sq. yds.) project completed in the state of Missouri in 2021. Well done!

Is your company celebrating a milestone or achievement you'd like to see in our newsletter? We'd like to hear from you! Information can be sent to leah@sitestl.org.

2022 BOARD OF DIRECTORS



Pat Moriarity



Kevin Keenoy



Steve Roden



Matt Clark









Chris Boeger

The Board of Directors of the SITE Improvement Association has elected Pat Moriarity as President, Kevin Keenoy as Vice President and Steve Roden as Secretary/Treasurer for 2022.

Moriarity is President of Concrete Strategies, LLC; Keenoy is Co-Owner of GS Grinding Services; and Roden is President of Roden's Landscaping, Inc.

Two new directors were elected to the board, including Matt Clark, President of PCX Construction, LLC, and Chris Boeger, Vice President of Leritz Contracting & Busy Bee Paving. Clark represents SITE's Earthmoving Division and Boeger represents the Asphalt Paving Division.

In addition, six directors were re-elected to two-year terms on the board. The returning members include:

-  **Steve Roden** – President of Roden's Landscaping, Inc.
-  **Pat Moriarity** – President of Concrete Strategies, LLC
-  **Chris Gottman** – Senior Vice President – Construction for Millstone Weber
-  **Tom Kelp** – Owner of Kelp Contracting, Inc.
-  **Jaime Chier** – Manager of Premier Demolition
-  **Chris O'Hagan** – Principal at JD Kutter Insurance

"I want to thank all of our board members for their service as we enter a very important year for all of our member companies thanks to new federal infrastructure investments coupled with local and state stimulus spending," said Jeremy Bennett, Executive Director of the SITE Improvement Association.

CONSTRUCTION LEADERSHIP CERTIFICATE

SITE is proud to offer once again the Construction Leadership Certificate. The course is offered in partnership with Washington University. This year's class has a wide array of participants from project managers, sales representatives, office managers and business owners.

The course teaches many different topics, including:

- | | |
|---|--|
|  Effective Leadership |  Government Affairs |
|  Influencing Others |  Labor Relations |
|  Workplace Conflict |  Much more! |



The program will wrap up in April. All participants will receive not only their certificates for completing the course, but a wealth of knowledge that will help them succeed in the construction industry for many years to come.



EXECUTIVE DIRECTOR'S COLUMN

JEREMY BENNETT

As the industry thaws out from the recent snows, there is a lot of positivity in the air about the amount of work to be performed in 2022. SITE's members are excited about the backlogs and planned projects that are forthcoming. I learned a lot about these upcoming projects as many were unveiled at our 2022 Investment in Infrastructure Expo. I want to personally thank all of our sponsors, exhibitors, members and guests who came out to support the expo. With over 400 attendees registered, it is our largest expo to date. SITE's staff, YES members, and helpers all did an excellent job coordinating the event and introducing speakers, which made the day a huge success. Lt. Governor Mike Kehoe gave an excellent keynote speech that left those in attendance proud to be in the construction industry. We thank him for attending and being a great advocate in the capitol.



We are very excited to announce that Aaron Griesheimer has accepted a full-time position with SITE Improvement Association starting January 1, 2022. Aaron was previously employed with SITE from 2010 through the spring of 2017 and left to accept a position in

his hometown of Washington, MO. During the Grietens/Parson transition, a Missouri House of Representatives seat opened up in the 61st District. Aaron had aspirations of being a Missouri legislator, ran, and was elected to the seat in 2018. Aaron was a shining star in Jefferson City because constituents, lobbyists, and colleagues trusted him, and he followed through on his promises. We are happy to have him

join the staff full-time as the Director of Education and Training. Aaron is assisting committees and members on the legislative process, building relationships with local elected officials and tracking legislation that could impact SITE's membership.

SITE's Management Seminars in Puerto Vallarta was definitely a trip to remember. The speaker, Dan Stover, did a wonderful job walking the attendees down multiple paths of how to enhance collaboration between management and field workers. The group exercises brought out great suggestions, tears and laughter. The resort created a fantastic atmosphere for SITE members to get to know one another better and strengthen relationships that were forged pre-COVID. SITE's staff member, Rhonda Wilson, did an excellent job guiding the group home amid flight cancellations due to winter storm Landon, which dropped almost a foot of snow in the St. Louis area. Thank you, Rhonda, for your professionalism and attentiveness to detail during that stressful time for all the travelers.

While we are thrilled to have plenty of work going on in the area, the motor fuel tax increase in Senate Bill 262 that SITE helped navigate through Missouri's legislature in 2021 is under attack. SB 262 is expected to fully fund MODOT's Statewide Transportation Improvement Plan and provide well over \$1 billion annually in state construction investment throughout Missouri. Representative Sarah Walsh, sponsor of HB 1594, is guiding legislation to repeal SB 262, citing the state's unprecedented budget surplus and federal recovery funds as justification for eliminating this additional revenue stream. She also stated Missourians needed relief while during a recession. SITE testified in opposition to HB 1594, but we will see if it gains any traction.

Don't forget to update your safety manuals, perform refresher training and take advantage of SITE's safety courses. They are great for keeping your workforce informed, safe, and tackling those PEU credits.

METROPOLITAN ST. LOUIS SEWER DISTRICT

*Standard Construction Specs
(Greenbook)*

Since 2020, SITE Improvement Association has been working in collaboration with the Metropolitan St. Louis Sewer District to update its standard construction specs book, otherwise known as the “green book.” These standard construction specifications apply to all sewer and channel facility construction projects intended to be dedicated to MSD for maintenance. After many emails and long meetings, we are in the final stages of the review process. A great deal of thanks goes out to Jennifer Bouquet (J & J Boring), Kris Bates (Bates Utility Company), Mike Luth (Fred M. Luth & Sons), and Travis Jerrells (SAK Construction) for all their hard work.

ST. LOUIS COUNTY

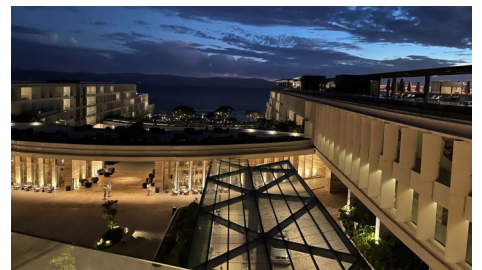
Concrete Specs

St. Louis County reached out to SITE Improvement Association for input in updating its concrete specs book. As you can imagine, it’s been a long and strenuous review process. However, SITE has greatly appreciated its longstanding working relationship with the St. Louis County Department of Transportation. A great deal of thanks goes out to Scott Inserra (R.V. Wagner, Inc.), Chuck Risley (Gershenson Construction), and Jeff Schaefer (Kienstra Concrete) for all their time and hard work.

MANAGEMENT SEMINARS



Another new location, Punta de Mita, Mexico, goes down in SITE Management Seminar history. Some people may ask, where is Punta de Mita? The answer is approximately 30 minutes from Puerto Vallarta. Despite COVID, SITE travelers visited a brand-new resort, Secrets Bahia Mita Surf & Spa Resort, that opened in August 2021. The trip was Thursday, January 27-Thursday, February 3. As you can see in the group photo, a sizeable group attended. The resort was big, had many restaurants and pools to choose from--true travelers paradise!! As the weather in Mexico was mid-70s and sunny with a slight breeze, St. Louis was having extreme cold temperatures, ice, and 10 plus inches of snow (typical for February weather). The two-day seminar topic presented was “The Brain of a Leader: Building Trust and Collaboration Across the Office and the Field” by Daniel Stover from Ensign Partners. The attendees all thought the topic was very useful. The golfers got to experience three different golf courses again this year. Those who played said one course was as nice as the other and enjoyed every minute of it. A special shout-out to the Management Seminars Committee. Thank you for another successful trip. Stay tuned for details on the 2023 Management Seminars trip.





LEGISLATIVE REPORT

AARON GRIESHEIMER

Well, the 2022 legislative session has officially begun. January 5 marked the beginning of the second regular session of the 101st General Assembly. I, along with Representative Justin Hill, both resigned from office to take positions in the private sector. The House of Representatives is now down to 108 Republican members. This is significant for a couple different reasons:

1. The Republicans do not have enough votes within their own caucus to override a Governor's veto. Therefore, if the Governor does veto a bill, the Republicans will have to reach across the aisle to the Democrats.
2. Also, there are not enough votes to pass an emergency clause on a bill. An emergency clause simply makes a bill immediately go into effect upon signage by the Governor. Per the constitution, all bills that are signed by the Governor become effective on August 28.



Griesheimer gives his farewell address

So why is this important? The Missouri General Assembly is responsible for drawing the Congressional maps. The overall goal of the Republican base is to pass a rock-solid six Republican and two Democrat map where Republicans can hold onto



their seats for another decade. For example, Congresswoman Ann Wagner is currently in a very competitive district. The Republicans want to draw her farther out of St. Louis County and even more into St. Charles County, which has generally been a conservative-friendly area.

However, the Conservative Caucus members are pushing for a 7-1 map, which would have the Democrats with only one U.S. House seat. While this sounds great if you're a Republican, it creates many challenges. Drawing a 7-1 map not only makes other districts more competitive, but it creates a legal challenge and is ripe for a lawsuit. If the courts draw the maps, the belief is Democrats could likely gain a seat.



House approved Congressional map

When a Congressional map is finally approved, it won't go into effect until August 28. This is several weeks after the primary election!

On the bill tracking side, we are closely monitoring several bills this year. **House Bill 1594**, if passed, would completely repeal the gas tax increase from last year which climbs by 2.5 cents every year until it reaches 12.5 cents in 2025. Don't panic! This bill

will get some movement in the House as it was voted out of committee.

It's important to note that Representative Sara Walsh (sponsor) is currently running for U.S. Congress. Therefore, her actions are partly politically motivated for her campaign. Realistically, the bill has got a long road ahead, *no pun intended*.

We're also closely monitoring **House Bill 1584**. This bill requires political subdivisions that require the installation of electric vehicle charging stations at certain businesses to pay the costs associated with the installation, maintenance, and operation of such stations. This bill was filed in response to a St. Louis County Council ordinance that passed last year. The ordinance mandates the installation of electric vehicle charging stations in parking lots in unincorporated St. Louis County when a building is newly constructed or significantly remodeled, or upon reconstruction or overlay of a parking lot.

SITE supports the bill because our fear is the St. Louis County ordinance could deter owners from improving their parking lots, which would halt potential work for our members. SITE has met with Councilwoman Dunaway to discuss our concerns and has offered a potential compromise.

LOCAL ISSUES

The St. Louis County Council passed Substitute Bill No. 2 to **Bill No. 395**. This ordinance, which is sponsored by Councilman Ernie Trakas, makes many changes to the County's current purchasing requirements as it relates to the M/WBE program. While some changes are not significant, these changes are the most prominent:

1. M/WBE contractors are permitted to bid as primes, but an M/WBE prime contractor may only receive credit toward the contract participation goal for work actually performed under the contract.
2. It further states work that an M/WBE prime contractor subcontracts to a non-M/WBE firm will not be credited toward the contract participation goal.

The current participation goals (24 percent minority business, 9 percent female business) are still in place, and the director of minority business development & inclusion is allowed to adjust those goals based on certain criteria per project.



Councilman Ernie Trakas

Councilman Trakas filed the bill to address a growing number of county projects that weren't getting any bids because contractors couldn't meet the county's current M/WBE goals, which were adopted in 2018. He hopes the new ordinance will provide more flexibility for contractors.

SCHOLARSHIP OPPORTUNITY

THE APPLICATION DEADLINE IS FRIDAY, MARCH 25, 2022.

SITE scholarship applications for high school seniors and/or college students are now available!! Applicants must be the child or step-child of a full-time employee or officer of a SITE contractor or associate member in good standing. Such employee or officer shall be employed at the employer's facility located within the St. Louis metropolitan area. Applications for scholarships and the 2022 Eligibility Rules & Application Process have been mailed and emailed to all member companies and are available at www.sitestl.org on the front page listed under 2022 Scholarship Information. Contact Leah at (314) 966-2950 should you have any questions.



CONTRACTOR MEMBERS

Concrete Division

| | | |
|--|-------------------|----------------|
| Alfred F. Mullen Concrete Contracting Co. | Mike Mullen | (314) 966-0177 |
| Birkemeier Construction, Inc. | Jeff Birkemeier | (636) 978-8892 |
| Boling Concrete Construction | Cindy Boling | (314) 772-6300 |
| Builder's Bloc Contracting Services, LLC | Kevin Deptula | (314) 336-0200 |
| Bumb Construction, Inc. | Dave Bumb | (314) 291-4284 |
| Byrne & Jones Concrete | Carl Rouse | (314) 567-7997 |
| Concrete Strategies, LLC | Pat Moriarity | (314) 595-6300 |
| Contegra Services, LLC | Jim Mundy | (618) 219-4895 |
| Fenix Construction Company | Steve Ladenberger | (314) 892-4700 |
| Hawkins Construction and Flat Work LLC | Bob Hawkins | (636) 409-1115 |
| HF Flatwork | Carl Hines | (636) 262-2684 |
| J.S. Aubuchon Concrete Company | Jerry Aubuchon | (636) 661-5655 |
| Joint Sealing Solutions | Blake Gamber | (314) 229-1460 |
| Karrenbrock Construction, Inc. | Roger Karrenbrock | (636) 828-5420 |
| Musselman & Hall Contractors, LLC | Keith Ahal | (314) 739-1142 |
| Obax Infrastructures/O'Basuyi Construction | Patrick O'Basuyi | (314) 462-0620 |
| Oreo & Botta Concrete Company | Tom Milne | (314) 427-3800 |
| R. V. Wagner, Inc. | Dan Wagner | (314) 892-1600 |
| Scharf Construction Co., LLC | Rick Scharf | (314) 869-0060 |
| Spencer Contracting Company | Tony Spencer | (314) 843-5166 |
| T and T Contracting Company | Malcom Thompson | (314) 267-3114 |
| Thick Concrete | Matt Williams | (314) 282-2516 |
| Vee-Jay Cement Contracting Company, Inc. | Stephen Krieger | (314) 351-3366 |

Earthmoving Division

| | | |
|---------------------------------------|------------------|----------------|
| Ballmann Earthworks, LLC | Jon Ballmann | (636) 236-4242 |
| Bloomsdale Excavating Co., Inc. | Scott Drury | (573) 483-2564 |
| Brandt Contracting, Inc. | Sedrick Brandt | (636) 352-4818 |
| Budrovich Excavating & Contracting | Jeff Budrovich | (314) 892-3030 |
| Busken Construction Company | David Busken | (314) 630-8866 |
| Interstate Equipment, Inc. | Steve Lawrence | (636) 387-7700 |
| Jones Grading & Excavating, Inc. | Noel Jones | (314) 647-1697 |
| K. J. Unnerstall Construction Company | Kurt Unnerstall | (636) 239-2028 |
| Kendall's Hauling, LLC | Kendall Davidson | (314) 517-0905 |
| Kuesel Excavating Co., Inc. | Mike Steiniger | (636) 978-3478 |
| McFry Excavating, Inc. | Doug Pavis | (636) 386-4779 |
| Nor-Vel Grading & Excavating, LLC | Matt Beckmann | (636) 387-1888 |
| PCX Construction, LLC | Matt Clark | (636) 287-1848 |
| R & K Excavation, Inc. | Kyle Faulkner | (636) 937-1268 |
| Rich Gullet & Sons, Inc. | Randy Gullet | (636) 271-2327 |
| Sellenriek Grading Company, Inc. | Drew Sellenriek | (636) 938-9299 |
| Semke Grading, LLC | Brenda Semke | (636) 250-4225 |
| Town & Country Grading, Inc. | Alan Laughlin | (636) 475-7887 |

Highway/Bridge Division

| | | |
|-------------------------------------|----------------|----------------|
| AMCON Municipal Concrete, LLC | Paul Amelong | (636) 379-9396 |
| Gershenson Construction Co., Inc. | Ed Gershenson | (636) 938-9595 |
| M & H Concrete Contractors, Inc. | Rick Matteson | (636) 379-9682 |
| Millstone Weber, LLC | Thom Kuhn | (636) 949-0038 |
| N.B. West Contracting Company, Inc. | Jim Fitzgerald | (314) 962-3145 |
| Pace Construction Company | Ryan Casey | (314) 524-7223 |
| Pavement Solutions, LLC | Matt St. John | (636) 970-2727 |

Asphalt Paving Division

| | | |
|--|---------------|----------------|
| Accurate Asphalt Paving Co., Inc. | Dan Lucas | (636) 343-5199 |
| Byrne & Jones Construction | Brian Goggins | (314) 567-7997 |
| Diversified Contractors | Brad Laramie | (314) 638-2500 |
| E. Meier Contracting, Inc. | Rod Fain | (636) 300-0908 |
| Ford Asphalt Company, Inc. | Brad Fritsche | (314) 291-2600 |
| Jokerst Paving & Contracting | Grant Jokerst | (636) 937-7101 |
| Keeley Construction | Matt Taylor | (314) 421-5933 |
| Leritz Contracting, Inc./Busy Bee Paving, Inc. | Joe Leritz | (314) 821-2615 |

Landscaping Division

| | | |
|--------------------------------------|--------------------|----------------|
| A. Waldbart & Sons Nursery | Jay Behle | (314) 895-4589 |
| Baxter Farms & Nurseries | Adam Guthrie | (314) 542-9400 |
| Conoyer Brothers Landscaping, Inc. | Craig Conoyer | (636) 397-7217 |
| DJM Ecological Services, Inc. | Doug Bauer | (314) 478-2388 |
| Double Image Companies, Inc. | Jack Grubbs | (636) 639-2094 |
| ECO Constructors | Shawn Garland | (636) 561-3158 |
| Greenspace Landscaping | Stephen Kelly | (314) 895-8860 |
| Keeven Brothers Landscaping, Inc. | Mike Keeven | (314) 837-6948 |
| LanDesign, LLC | George Tucker, Jr. | (636) 332-4500 |
| Midwest Turf Contractors | Charity Keeven | (636) 926-9988 |
| Professional Irrigation Systems | Jon Lauer | (636) 695-7800 |
| Roden's Landscaping, Inc. | Steve Roden | (636) 561-3947 |
| ROSCH Midwest, LLC | Scott Rozier | (636) 519-7770 |
| Schaefer-Meyer Seed-Sod Div. 1, Inc. | Greg Meyer | (636) 947-7173 |
| Site System Landscaping, LLC | Kathy Roden | (636) 332-7333 |
| TerraScape Landscape Constructors | Eric Hogan | (314) 581-8576 |

Sewer/Utility Division

| | | |
|---|------------------|----------------|
| Aztec Construction Specialties, LLC | Hector Maldonado | (618) 223-9936 |
| Bahr Hydroexcavation, LLC | Leslie Bahr | (314) 809-1172 |
| Bates Utility Company, Inc. | Tim Bates | (636) 939-5628 |
| Bi-State Utilities Company | Mike Jerome | (314) 209-0202 |
| C.E. Bollmeier Co., Inc. | Bill Bollmeier | (314) 298-7885 |
| Castle Contracting, LLC | Brian Carlson | (314) 421-0042 |
| David Mason + Associates | Spencer Mason | (314) 534-1030 |
| Fred M. Luth & Sons, Inc. | Mike Luth | (314) 771-3892 |
| Girdner Contracting LLC | Bridget Girdner | (314) 605-4301 |
| J & J Boring, Inc. | Jennifer Bouquet | (636) 566-6766 |
| J.H. Berra Construction Company, Inc. | Frank Berra | (314) 487-5617 |
| J.W. Bommarito Construction Co., Inc. | Joe W. Bommarito | (314) 353-0104 |
| Karrenbrock Excavating LLC | Doug Bierman | (636) 828-5420 |
| Kelpe Contracting, Inc. | Tom Kelpe | (636) 458-1400 |
| Luther's Supply, LLC | Luther Boykins | (314) 385-6499 |
| Poeling Construction | Shane Poeling | (636) 463-2437 |
| S & S Utility Contracting Company, Inc. | Danny Purler | (314) 220-5161 |
| SAK Construction | Jerry Shaw | (636) 385-1500 |
| Semke Pipe Works, Inc. | Brenda Semke | (636) 250-4225 |
| Southern Ditching & Excavating Company | T.J. Moor | (636) 441-1112 |
| TaylorMade Construction, LLC | Andre Taylor | (314) 868-1005 |
| Unnerstall Contracting Company, LLC | Steve Unnerstall | (636) 257-3003 |
| Williams Tunnelling Industries, Inc. | Edison Williams | (314) 925-8649 |
| XL Contracting, Inc. | Ken Novel | (636) 970-2710 |

Specialty Division

| | | |
|---|-------------------|----------------|
| AgriCycle, Inc. | Patrick Geraty | (636) 861-3344 |
| All Star Concrete Pumping | Keith Dennis | (636) 475-9539 |
| Badger Daylighting Corporation | Benji Koonce | (314) 954-7192 |
| C2 Service Group, Inc. | Lorri Keenum | (636) 283-5031 |
| Cherokee Hauling, LLC | Mike Tallis | (314) 393-7112 |
| CNC Foundations, Inc. | Ray Van Amburg | (618) 213-8853 |
| Collins & Hermann, Inc. | Mike Shepard | (314) 869-8000 |
| D&D Sealcoating & Striping | Nate Shaeffer | (314) 312-2329 |
| Drainscapes | Casey Graves | (314) 892-9888 |
| Drilling Service Company | Sean Jackson | (314) 291-1111 |
| Elastizell of St. Louis, Inc. | Jane Megown | (636) 225-4311 |
| Fick Supply Service, Inc. | Dave Fick | (314) 560-0146 |
| George McDonnell & Sons Tuckpointing Co., Inc. | Tom McDonnell | (314) 739-0468 |
| GS Grinding Services, LLC | Dave Grimes | (636) 474-1183 |
| Hansen's Tree Service & Environmental Resources | Ken Byrne | (636) 379-1830 |
| Ideal Landscape Group | Dave Buckel | (314) 892-9500 |
| J&R Concrete Services, LLC | Stephanie Johnson | (314) 596-2311 |
| Kurtz Nursery and Topsoil | Matthew Kurtz | (636) 405-2667 |
| McConnell & Associates Corporation | Greg Lucas | (314) 962-1920 |
| MW Drone Photography | Mark Wheeler | (314) 398-2569 |
| Native Landscape Solutions, Inc. | Chuck Caverly | (314) 544-7918 |
| Premier Demolition, Inc. | Bill Buell | (314) 645-5566 |
| Reinhold Electric, Inc. | Jerry Reinhold | (314) 631-1158 |
| Retaining Wall Solutions | Michael Yount | (314) 842-8200 |
| Supplied Industrial Solutions | Stephen Brock | (618) 452-8151 |
| Thomas Industrial Coatings, Inc. | Don Thomas | (636) 475-3500 |
| Traffic Control Company | Joe Backer | (636) 225-7800 |
| TraMar Contracting, Inc. | Peggy McGrath | (636) 255-0808 |
| Two Alpha Contracting, LLC | Rhiannon Parisi | (636) 384-1296 |

January/February



ASSOCIATE MEMBERS

| | | | | | |
|-------------------------------------|---------------------|----------------|--|--------------------|----------------|
| 1st Advantage Bank | Joe Armour | (636) 970-0440 | Luby Equipment Services | David Kedney | (636) 343-9970 |
| 24/7 OnSite Cameras | Nick Bartolotta | (314) 718-0453 | Luby Shoring Services, LLC | John Powell | (636) 660-7467 |
| Acuity Insurance | AJ Gajdosik | (636) 287-2068 | Magruder Limestone Company, Inc. | Jacob Fortner | (636) 528-4180 |
| Advanced Drainage Systems | Brian Snelson | (618) 593-6135 | Mannino Truck Leasing, Inc. | Joe Mannino | (314) 393-0715 |
| American Steel Fabrication, Inc. | Tim Thomas | (636) 475-7272 | MayeCreate, LLC | Stacy Brockmeier | (573) 447-1836 |
| Archview Services | Tony Coco | (314) 474-7800 | Middendorf, Inc. | Allan Middendorf | (618) 540-8446 |
| ASP Enterprises, Inc. | Don Thieman | (636) 343-4357 | Mississippi Valley Equipment Company | Bob Clapsaddle | (314) 869-8600 |
| Bank of Springfield (BOS Bank) | Marty McCabe | (314) 888-6906 | Missouri Petroleum Products Company | Mike Hartman | (314) 219-7305 |
| BITCO Insurance Companies | Chris Demse | (314) 822-4446 | National Trench Safety | Scott Emmitt | (314) 383-0504 |
| Bobcat of St. Louis | Mike Allen | (636) 225-2900 | Neenah Foundry Company | Greg Hornbuckle | (314) 614-3627 |
| Bussen Quarries, Inc. | Mark Bussen | (314) 894-8777 | New Frontier Materials | Rusty Durbin | (314) 473-3434 |
| Carmody and Associates, Inc. | Robert Carmody, Jr. | (618) 231-8899 | Nu Way Concrete Forms, Inc. | Mike Townsend | (314) 544-1214 |
| Central Power Systems | Chuck Bauers | (314) 427-4911 | OnSite Companies | Chuck Davis | (636) 519-0507 |
| Central Stone Company | Jeff Pullen | (314) 830-9000 | Pacific GeoSource | Allen Akowicz | (636) 439-0431 |
| Champion Precast, Inc. | Joel Anderson | (573) 384-5855 | Pat Kelly Equipment Company, Inc. | Brian Kelly | (314) 895-9500 |
| Charles L. Crane Agency Company | Frank Rebholz III | (636) 537-5641 | People's Capital and Leasing Corp | Mike Range | (618) 606-1661 |
| Clayton Engineering Company, Inc. | Steve Quigley | (314) 692-8888 | Peoples Savings Bank | Don Meyer | (636) 398-5600 |
| CMIT Solutions | Barry Herring | (636) 925-9920 | Providence Bank | Nick Brunnworth | (636) 397-3804 |
| CMW Equipment | Larry Glynn | (314) 993-1336 | Purple Wave Auction | Scott Broz | (636) 725-6737 |
| Consolidated Pipe & Supply Company | Chris Hausmann | (636) 825-6678 | Rackers & Fernandez, LLC | Sergio Fernandez | (636) 498-1900 |
| Contech Engineered Solutions, LLC | Rob Richardson | (417) 459-7875 | Ritchie Bros. Auctioneers | Andrew Dillard | (618) 792-1670 |
| Core & Main | Randy Bradley | (314) 432-4750 | Roadbuilders Machinery & Supply | Travis Gentry | (913) 371-3822 |
| County Materials Corporation | Joel Gardner | (217) 544-4607 | Rock Hill Quarries Co. | Bruce Dresser | (314) 968-2336 |
| CSTK | Allen Lane | (314) 771-6666 | Roland Machinery Company | James Jesuit | (314) 291-1330 |
| Dan Althoff Trucking, Inc. | Dan Althoff | (636) 677-7772 | RubinBrown LLP | Ken Van Bree | (314) 290-3429 |
| Don Brown Chevrolet | Mike Kitchen | (314) 207-4471 | Rudd Equipment Company | John Robinson | (314) 487-8925 |
| Energy Petroleum Company | Steve Madras | (314) 383-3700 | Rush Truck Centers of Missouri, Inc. | Justin Demers | (314) 449-7200 |
| Enterprise Bank & Trust | Brian Geen | (314) 543-3914 | Safety International | Douglas Sicking | (636) 498-4476 |
| EquipmentShare | David Meyer | (636) 459-8640 | Safety Training Resources | Jeff Viehmann | (314) 808-3502 |
| Erb Equipment Company | Gregg Erb | (636) 349-0200 | Sandberg, Phoenix & von Gontard, P.C. | Tony Soukenik | (314) 446-4279 |
| Fabick CAT | Scott Crean | (636) 626-8948 | Schmersahl Treloar & Co. | Marianne Biangardi | (314) 966-2727 |
| Federated Insurance | Cole Waddell | (316) 617-7880 | SCI Engineering, Inc. | Karl Koenigsfeld | (636) 949-8200 |
| Fred Weber, Inc. | Tom Greco | (314) 473-3419 | Silver Eagle Construction Products, Inc. | Erik Thompson | (636) 240-6300 |
| G.S. & S. | Chris Hyams | (314) 298-8100 | Simpson Materials Company | Steve Simpson | (636) 343-4944 |
| Gateway Dredging & Contracting, LLC | Terry Bangert | (636) 665-5180 | SmithAmundsen LLC | Daniel Peters | (314) 719-3766 |
| Hanes Geo Components | Steve Wright | (636) 875-7317 | St. Louis Composting | Roy Gross | (636) 861-3344 |
| Hayden Machinery LLC | Jeremy Hancock | (314) 550-1400 | Stormwater STL LLC | Steve Polk | (314) 406-7655 |
| Heritage Petroleum, LLC | Mike Mabrey | (314) 504-3198 | Topcon Solutions | Terry Gammill | (816) 985-1791 |
| Interstate Testing Services | Andy LaPlante | (314) 994-0641 | Traffic Management, Inc. | Josh Turk | (314) 309-5928 |
| ISCO Industries, Inc. | Shaun Parker | (314) 422-7234 | U.S. Bank | Sean Johnson | (314) 307-6256 |
| J.D. Kutter | Kim Connell | (314) 444-4949 | United Rentals | Angie Wheeler | (314) 267-7621 |
| J.W. Terrill, Inc. | Pete Mohs | (314) 594-2700 | United Rentals -Trench Safety | James Dickey | (314) 729-0003 |
| John J. Guilfooy & Associates, LLC | John Guilfooy | (314) 781-1122 | Vanguard Truck Centers | Dan Green | (618) 857-7625 |
| K & K Supply Inc. | Matt Williams | (636) 349-1141 | Vermeer Midwest, Inc. | Chad Van Soelen | (636) 532-2332 |
| K & P Precast, Inc. | Tammy Daugherty | (636) 978-3111 | Wallis Lubricants, LLC | Kati Douglas | (636) 271-0900 |
| Kienstra Co. | Dan Bruns | (314) 994-1616 | Warrenton Oil Company | David Baker | (636) 456-3346 |
| Kienstra Pipe and Precast | Steve Peery | (618) 482-3283 | Western Ready-Mix, Inc. | Mike Reed | (636) 519-1522 |
| Kirby-Smith Machinery, Inc. | Matt Nelson | (314) 729-0125 | Wieser Concrete Products, Inc. | Drew Wieser | (618) 251-9210 |
| Kohrs Truck & Auto Repair, Inc. | Harold Kohrs | (636) 240-7935 | Winter Brothers Material Company | Ryan Winter | (314) 843-1400 |
| Lizmark Branded Solutions | Liz Tillman | (314) 394-0901 | Workplace Synergy | Maureen Trompeter | (314) 473-4665 |

MAKE SITE WORK FOR YOU

Call on SITE members for the highest quality products and services

January/February

2022 INVESTMENT IN INFRASTRUCTURE EXPO CONTINUED

The Parson administration has made infrastructure investment and workforce development top priorities, and the progress being made with their leadership will improve the construction industry exponentially.

Did you miss something important during a presentation or miss the event? All the presentations are available to view on SITE's website. Click the Resources tab and look for the 2022 Expo Presentation link. From there you'll be able to check out anything you may have missed.

The expo could not have been such a success if it weren't for all the exhibitors, platinum, diamond, bar and buffet sponsors. We thank you and all the attendees for the great support! A quick shout-out to our volunteers: Chris Morris from Lizmark and Maura Kelly from Pat Kelly Equipment for helping with registration, along with a few Y.E.S. (Young Executives of SITE) members, Danielle Givens from Site Systems Landscaping, Kevin Betley from DJM Ecological Services, Jordan Lampkin from Peoples Savings Bank and Steve Groene from TraMar Contracting for introducing the presentation speakers. We look forward to doing it all over again at the 2023 Investment in Infrastructure Expo!

THANK YOU TO OUR SPONSORS FOR MAKING THE 2022 EXPO A SUCCESS!

| | | |
|---------------------------------|--------------------------------|---------------------------------|
| Ameren Missouri | Badger Daylighting Corporation | Bahr Hydroexcavation, LLC |
| Bobcat of St. Louis | Cement Masons Local 527 | Central Power Systems |
| Energy Petroleum Company | Fabick Cat | Gonzalez Companies, Inc. |
| Hanes Geo Components | Hayden Machinery, LLC | Kirby-Smith Machinery, Inc. |
| Laborers Local 110 | LECET | Luby Equipment Services |
| McCoy Construction and Forestry | Missouri One Call System | Operating Engineers Local 513 |
| Pat Kelly Equipment Company | Purple Wave Auction | RoadBuilders Machinery & Supply |
| Roland Machinery Company | Rudd Equipment Company | SCI Engineering, Inc. |
| Seiler Instruments | St. Louis Composting | T.Y. Lin International |
| Traffic Management, Inc. | TraMar Contracting, Inc. | United Rentals |



2022 Investment in Infrastructure Expo



SITE APPRECIATES THE SUPPORT OF THESE COMPANIES

Barrier
Concrete
Steel
Temporary Traffic Control
Full Service
Rental
Sales
Pavement Marking
Full Service
Temporary
Permanent
Removals
Marker Install
Material Sales

TRAMAR CONTRACTING, INC.

DBE CERTIFIED CONTRACTOR
3051 Merchantile Ind. Dr.
St. Charles, MO 63301

636-255-0808
fax 636-255-0719
cell 314-852-5088

Hawkins Construction and Flat Work, LLC
Bob Hawkins, President

223 O'Fallon Plaza
O'Fallon, MO 63366

636-409-1115 office
314-267-9785

bob@hawkinsconstruction.net
website: www.hawkinsconstruction.net

ESTK
CRAIG DIERKING
OFF-HIGHWAY SALES SPECIALIST

Office: 314-256-5302
Mobile: 314-337-8894
420 East Carrie Avenue
Saint Louis, MO 63147
cdierking@estk.com

RedDOT
Eberspächer
AFEX
FIRE SUPPRESSION SYSTEMS

PAT KELLY EQUIPMENT CO.
FAMILY OWNED SINCE 1976
Celebrating 45 Years!
1976 2021

NEW HOLLAND CONSTRUCTION
NATIONAL CRANE

NEW & USED EQUIPMENT | PARTS | RENTAL | SERVICE | SUPPLIES | TOOLS

314-895-9500 | PATKELLY.COM

BRIDGING AMERICA'S COMMUNITIES
THAT'S THOMAS PRIDE.

Thomas Industrial Coatings, Inc. is a multi-certified industrial painting and coatings contractor dedicated to quality, safety, and efficiency. We take great pride in our work, and it shows on every job we do across the country.

thomasindcoatings.com (636)475-3500
For career opportunities please visit thomasindcoatings.com/careers

KOHR'S TRUCK & AUTO REPAIR INC.
www.kohrstruck.com
Kathy

636-240-7935 615 Arrow Ln O'Fallon, MO 63366

NTS NATIONAL TRENCH SAFETY

Dee Deslatte
Branch Sales Manager

Cell: 314-910-0067
Email: DeeDeslatte@ntsafety.com

"THE TRENCH & TRAFFIC SAFETY SPECIALIST"
RENTALS • SALES • SERVICE • TRAINING

Mississippi Valley Equipment Company
Pile Driving & Drilling Equipment

Call Ken or Bob
www.mve-stl.com
(314) 869-8600 • (800) 325-8001

1198 Pershall Road • St. Louis, MO 63137

Gregory A. Smith
President / Chief Executive Officer
636.970.0440 office
greg.smith@1stadvantagebank.com

1st Advantage Bank
Community Minded, Technology Driven

240 Salt Lick Road
St. Peters, MO 63376
1stAdvantageBank.com

ESTK
DON JACOBS
SALES REPRESENTATIVE

Office: 314-256-5315
Mobile: 314-810-6325
Address: 420 E. Carrie Ave.
St. Louis, MO 63147
Email: djacobs@estk.com

AUTO CRANE
IMT
An Oshkosh Corporation Company
CM TRUCK BEDS

SITE APPRECIATES THE SUPPORT OF THESE COMPANIES

Insurance / Surety Bonds
for the Construction Industry



**MARSH & MCLENNAN
AGENCY**

Pete Mohs

314-374-6136

Pete.Mohs@MarshMMA.com

marshmma.com/stl



www.rolandmachinery.com

James M. Jesuit

Vice President/
General Manager
St. Louis Division

KOMATSU

Phone: 314-291-1330

Fax: 314-291-8050

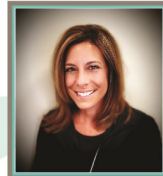
Cell: 314-378-2680

Email: jjesuit@rolandmachinery.com

Screen Printing Embroidery Safety Apparel

lizmark

BRANDED SOLUTIONS



LIZ TILLMAN

liz@lizmark.com

O: 314-394-0901

C: 314-706-1275



BRANDED SOLUTIONS SINCE 1998

Business Gifts

Tradeshow

Giveaways



Rick Scharf

Owner

Specializing in Industrial, Commercial, and Structural Concrete

www.scharfstl.com

Cell (314) 280-4000

Office (314) 869-0060

Fax (314) 869-0067

119 Didion Suite B.

St. Peters, MO 63376

Email: scharfconstruction@hotmail.com



INFRASTRUCTURE SOLUTIONS

1215 Dunn Road
PO Box 38901-0901
St. Louis, MO 63138

collinsandhermann.com

Mike Shepard

PRESIDENT | CHIEF OPERATING OFFICER

mshepard@collinsandhermann.com

office: (314) 869-8000 | mobile: (314) 267-0617 | fax: (314) 869-8498



**Your Best Options for Equipment Sales,
Rentals, Parts & Service**

David Kedney

Vice President of
Sales & Marketing

2300 Cassens Dr., Fenton, MO 63026

Office: 636-343-9970

Cell: 314-412-8567

dkedney@lubyequipment.com



PAUL KEIL

SALES MANAGER

Office: 314-256-5331

Mobile: 314-565-8370

Address: 420 E. Carrie Ave.

St. Louis, MO 63147

Email: pkeil@cstk.com



READING

— NO BODY BETTER —



**NATIONAL
TRENCH SAFETY**

Brian Stark

Outside Sales

Cell: 314-365-2295

Email: BrianStark@ntsafety.com

"THE TRENCH & TRAFFIC SAFETY SPECIALIST"
RENTALS • SALES • SERVICE • TRAINING



Kim Connell, CPCU, CIC

Insurance and
Contract Bonds

Affiliated with
The Crane Agency

100 North Broadway, Suite 900

St. Louis, MO 63102

p: 314/444-4822

m: 618/977-3706

e: kim@jdkutter.com

w: www.jdkutter.com

LABOR RELATIONS

BY JEREMY BENNETT

LABORERS' UNION WAGE NOTIFICATIONS

2022 Wage Notices for Heavy/Highway, Commercial, and Residential wage rates for laborers locals 42,110, 660, 955, 1104, 662, and 840 were sent out to contractors on February 15. The effective dates of the increases vary by local and type of work. Should any member have any questions or like additional copies, please refer to the labor relations page on SITE's website or contact Jeremy Bennett at SITE's office.

CEMENT MASONS WAGE NOTIFICATION

2022 Wage Notices for Heavy/Highway, Commercial, and Residential wage rates will be sent out to contractors in March. The effective date of their increase will take place the first Monday in April.

OPERATING ENGINEERS WAGE NOTIFICATION

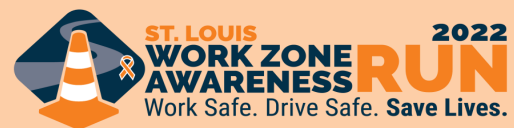
2022 Wage Notice for Heavy/Highway, Commercial and Residential will be sent out to contractors in March. The effective date of their increase is the first Monday in May.

Recently at the Saint Louis Construction Cooperative meeting, a joint labor and management group, there was a discussion about manpower for the upcoming 2022 construction season. The group collectively talked about upcoming projects and the amount of work that owners in the Saint Louis area are getting ready to bid. Both labor and management estimate somewhere be-

tween a 7 percent and 10 percent increase in manhours for 2022. Below are the employment percentages for each trade in Saint Louis. As you can see, many of the trades even in January and February are near full employment.

| | |
|-------------------|-----------------------------|
| 94% Operators | 100% Plumbers & Pipefitters |
| 99% Laborers | 97% Electricians |
| 90% Cement Masons | 97% Sheet Metal Workers |
| 99% Teamsters | 95% Carpenters |
| 95% Iron Workers | 99% Sprinkler Fitters |
| 99% Insulators | 99% Painters |
| 99% Brick Layers | 20% Boiler Makers |

With an increase of projects and a possible 10 percent jump in manhours, expect there to be more manpower issues into 2022. Both labor and management have agreed to relax the suspension of benefits provisions to allow retirees to work more hours. This is true amongst most trades. Labor and management are also both encouraging contractors to hire apprentices and groom the next generation of construction workers. Should you have any questions about hiring an apprentice or individuals off the street, please reach out to me at SITE's office.



Help raise awareness for safe driving as the construction season kicks off with National Work Zone Awareness Week! On Saturday, April 9, there will be a 5K Run and 1 Mile Fun Run/Walk for all ages! Everyone gets a short-sleeve high-visibility moisture wicking t-shirt for safety while running outside. Get out in the spring weather and spread the message to **Work Safe. Drive Safe. Save Lives.**

For more details or to sign up, visit

<https://runsignup.com/Race/MO/Chesterfield/WorkzoneAwareness5K>

FROM THE SAFETY SIDE

MISSED OPPORTUNITIES

One of the greatest strengths of being a member of organizations like SITE is the collaboration among the members. Working together for a common cause, to fix a particular problem or accomplish a certain goal. This is never so true than the contractors who participate in our OSHA partnership.

Competitors in the construction industry, sitting across the table from one another, sharing incidents or stories from the jobsite. Many of the stories include catching a hazard or correcting a potential problem before it becomes an issue. These types of examples are commonly referred to as a “near miss.”



A “near miss” is defined by OSHA as an incident “in which a worker might have been hurt if the circumstances were slightly different.” This includes “close calls” where colleagues narrowly missed an accident. Examples of near misses include escaping from a falling object or avoiding an accident due to proper safety protocols.

The purpose for sharing these incidents in our OSHA partnership is to learn from one another. How can reporting a near miss help your company? Reporting a near miss can help managers and employees avoid injuries, illness, or even fatalities.

Although a near miss is not an OSHA recordable and the administration doesn’t require you to report it, it does recommend keeping track of near misses. When you record and investigate a near miss, you can learn from it, and avoid possible injury, incidents and accidents.

So how do you get workers to report a close call? Sometimes workers think they’ll be blamed for a close call that wasn’t their fault or they’ll face retribution for a simple mistake. Another reason why coworkers aren’t motivated to report near misses is that they don’t see how they’ll benefit from it. This is where a strong safety culture and safety incentives can help you and your company.

Try adding a near miss reporting system to your company handbook. This will show that management is serious about preventing incidents. It also proves that the company culture welcomes input rather than punishing workers who admit that they’ve made a mistake. Also, allow employees to remain anonymous. This may help employees feel safe and encourage employees to report them.

Lastly and most importantly, use these during your company toolbox talks. The key is not to blame the individuals but to work together to find solutions. A near miss or related incident report should not be seen as an admission of guilt. Through open, non-judgmental conversation, you nurture trust and cooperation, as well as a collective responsibility for safety practices in the workplace. These opportunities are simply one of the best ways to prevent harmful future accidents.

It is extremely important for employees to actively seek out potential faults and report them to prevent future injuries. Develop a strong safety culture, and provide a reporting system will benefit all employees in the long run.



2071 Exchange Dr.
St. Charles, MO 63303
(314) 966-2950
Fax: (314) 966-2999

President

Pat Moriarity - Concrete Strategies, LLC

Vice President

Kevin Keenoy - GS Grinding Services, LLC

Secretary/Treasurer

Steve Roden - Roden's Landscaping, Inc.

Executive Director

Jeremy Bennett

WWW.SITESTL.ORG

2022 PLANNED EVENTS

| | |
|----------------|--|
| Wed., March 9 | GENERAL MEMBERSHIP MEETING Syberg's - Dorsett |
| Thu., March 31 | Y.E.S. NETWORKING EVENT Saratoga Lanes |
| Wed., May 4 | GENERAL MEMBERSHIP MEETING Syberg's - Dorsett |
| Mon., Aug. 15 | SITE GOLF TOURNAMENT & DINNER Norwood Hills Country Club |
| Thu., Oct. 6 | CLAY BIRD SHOOT Black Hawk Valley Hunt Club |
| Thu., Dec. 1 | HOLIDAY HAPPY HOUR Bogey Hills Country Club |

Visit sitestl.org for more upcoming events