



Front row (left to right): SITE Vice President Kurt Unnerstall, Executive Director Jeremy Bennett, MHTC Chair Terry L. Ecker, and MoDOT Director Patrick McKenna. **Back row (left to right):** MHTC Commissioner Daniel Hegeman, MHTC Commissioner Dustin Boatwright; MHTC Commissioner Warren K. Erdman, and MHTC Commissioner Francis Slay.

SITE, MHTC & MODOT SIGN PARTNERSHIP AGREEMENT

SITE Improvement Association, the Missouri Highway and Transportation Commission, and the Missouri Department of Transportation are proud to announce the signing and formalization of their latest Partnership Agreement on February 13, 2024. This historic endeavor underscores SITE's unwavering commitment to serving the road and bridge industry, strengthening collaborative efforts with MoDOT, and advancing core principles such as safety, quality, workforce development, collaboration, communication, diversity, and community engagement.

"This partnership agreement is a testament to all the hard work, time, and resources membership and staff have provided over the years to make the road and bridge industry in Missouri the best it can

Continued on next page

SITE IMPROVEMENT ASSOCIATION NEWSLETTER

TABLE OF CONTENTS

**Executive Director's
Column - P. 3**

Legislative Report - P. 4

**2024 Investment in
Infrastructure Expo - P. 6**

**Young Executives of
SITE - P. 7**

Labor Report - P. 10

be. Being a respected partner with MoDOT and the MHTC is just another example of the organization fulfilling its mission of bettering the industry through intentional efforts from contractors and associate members of SITE,” noted Executive Director Jeremy Bennett.

Missouri Department of Transportation (MoDOT) was also a project presenter at the Investment in Infrastructure Expo on February 20, 2024, showcasing another example of industry collaboration for mutual benefit.

MEMBERSHIP UPDATE

As a new year is upon us, SITE’s membership continues to grow with ten new applications received. The 2024 membership dues renewal rate is at 81%. The last renewal notices were sent February 6 and were due March 1. If current members are unsure if their memberships have been paid, please contact Rhonda at rhonda@sitestl.org or call SITE’s office at (314) 966-2950. For those members who have already renewed, the association thanks you for your continued support.

A strong membership means success for your Association.

Thank you for your continued support.

WELCOME SITE’S NEWEST MEMBERS



EARTHMOVING DIVISION

CMK Excavation

1096 US 50
Union, MO 63084
(636) 303-9831
Carter Kuenzel



ASSOCIATE MEMBER

Commerce Bank

8001 Forsyth Blvd.
St. Louis MO 63105
(314) 746-5272
Shad Becker



CONCRETE DIVISION

Smith and Sons Contracting

13687 Medley Rd.
Desoto, MO 63020
(636) 284-0562
Dakota Smith



SPECIALTY DIVISION

Andis Industrial Field Service

400 Water St.
Cahokia, IL 62277
(314) 581-8298
Joe Romaine

Bellon Wrecking

4233 Chouteau Ave.
St. Louis, MO 63110
(314) 497-7585
Ben Mohrmann

Gerstner Electric, Inc.

2400 Cassens Dr.
Fenton, MO 63026
(636) 349-5999
Chris Gerstner



EXECUTIVE DIRECTOR'S COLUMN

JEREMY BENNETT

This first issue of the 2024 SITE newsletter is absolutely packed with all kinds of happenings within the organization. First I would like to congratulate Mike Shepard on becoming President of SITE. Mike is a seasoned veteran of the organization, actively participating in general membership meetings and networking events, stepping into leadership roles on the Operating Engineers Local 513 negotiating committees and finance committee. Mike has active Collins and Hermann team members in the SITE OSHA partnership group and safety committee and provides helpful feedback whenever he can to make the organization better. Mike has a full plate this year, leading the organization through the build-out of a new training facility for members of the organization. I welcome Mike into his new role as President and look forward to working with him closely in 2024.

The Management Seminars turnout was once again incredible this year. More than 65 members flew down to sunny Dominican Republic to learn about employee burnout and ways to mitigate mental health issues. Another topic we found intriguing was learning how to do business in the Dominican Republic. A local attorney walked the group through the process of performing work, investing in the area, and tax advantage strategies. While out of the classroom, members enjoyed a beautiful resort, mid 80s weather and some beautiful golf. The networking and learning experiences on this trip are very beneficial for all levels of management and leadership within SITE member companies. I highly encourage members to consider participating in one of these trips in the future.

WOW is all I can say about the 2024 Investment in Infrastructure Expo. SITE set a new record with its largest attendance in the history of the organization, with more than 800 registrations. Attendees really

enjoyed meeting with project owners, exhibitors, and equipment dealers scattered throughout the tradeshow floor. The project presenters are giving us feedback that they are seeing the benefits of new contractors bidding on their work and making new connections in the industry to better serve their constituents. This event has truly taken off and is now a staple in the St. Louis area. We are getting feedback that this type of expo is not held anywhere else in the U.S. – verified by a Canadian who flew down to take part in the event. Thank you to all the sponsors and members who make this event truly one of a kind!

You may have noticed all of the promotion of Mike Kehoe for Governor at the Expo. SITE's Board officially endorsed Mike Kehoe at the 2023 Expo and is pushing the message to the voting public that he is the best candidate to lead infrastructure investment, promote Missouri businesses, cut down on crime, and be a trusted leader who will do the right thing. Mike let SITE know he has been impressed with our promoting efforts and indicated that we have been a shining example for others to follow. We encourage our membership to join us in the effort to promote his name wherever you can. Got a sign placement for him? Reach out to Aaron Griesheimer at the SITE office.

Not all good news in this newsletter though. The passing of one of our former Executive Directors, Terry Briggs, caught the industry off guard. We are very appreciative of Terry's efforts in advancing SITE Improvement Association during his tenure at SITE from 2001-2020, and our deepest sympathies go out to Lori Briggs and the family. I know Terry was loving all the press and commotion around his death smiling ear to ear with those squinty eyes. He will be missed.

Will we get lucky with another dry spring? Let's hope! Stay safe out there.





LEGISLATIVE REPORT

AARON GRIESHEIMER

Before the commencement of the 2024 legislative session, concerns were widespread regarding the potential for productivity among legislators. Even the Missouri Independent newspaper articulated in a column, “expectations aren’t high.” Why? It’s an election year, inherently pitting colleagues against one another in primary races. Additionally, Senator Bill Eigel (R-St. Charles), the outspoken and unapologetic leader of the newly formed Freedom Caucus, had already announced his intention to run for Governor in Missouri. Therefore, it was a sure bet that much time would be wasted on political posturing and efforts aimed at gaining free press.

Fast forward to the present and we’re literally at the halfway point of session. Unfortunately, it’s been worse than anyone predicted. The internal conflicts within the Missouri Senate escalated to the point where Senate President Pro Tem Caleb Rowden ousted four members of the Freedom Caucus, whom he labeled as “swamp creatures,” from their committee chairmanships. The action resulted in a \$10,000 reduction in their office budgets and the loss of their parking spaces in the Capitol basement garage. Later in the same week, Senate Majority Leader Cindy O’Laughlin told reporters that she would support the expulsion of the Freedom Caucus leader Senator Bill Eigel. While she later apologized for her remarks, this showcases the deep divide in the Senate Republican caucus.

On the other side of the Capitol, the House has maintained some relative order in terms of bill passages and committee hearings. However, this could change as the Speaker of the House is currently in the midst of an ethics investigation. The Ethics Committee is expected to release its findings at the end of the month.



PROMPT PAY

The Building Better Business Coalition, of which SITE is an active member, is comprised of organizations from across Missouri dedicated to advancing legislation aimed at expediting payments to contractors on private construction projects. This year, the coalition is advocating for the passage of two bills addressing prompt payments: House Bill 2139 and Senate Bill 1257. While House Bill 2139 is currently stalled in the House, Senate Bill 1257 has been forwarded to the Senate Transportation Committee. Interestingly, Senator Travis Fitzwater, the Chairman of the committee, is also the sponsor of the bill.

I-44 EXPANSION

Governor Parson announced, during his annual State of the State address, plans to create an I-44 Improvement Fund. This fund is designed to complement the existing budget of nearly \$150 million allocated for studies on expansion and enhancements related to congestion and safety along I-44. Additionally, he proposed transferring \$14 million in interest earnings from the I-70 Improvement Fund to support the I-44 Improvement Fund.

Hopefully, the Senate and House budget chairs will allocate additional funds to enhance I-44. Both legislators have voiced their support for improving I-44 in the past. It’s important to note that Senator Lin-



coln Hough (Springfield) and Representative Cody Smith (Joplin) represent districts along I-44.

METROPOLITAN ST. LOUIS SEWER DISTRICT

This April, the Metropolitan St. Louis Sewer District (MSD) will be seeking voter approval on two different ballot initiatives: Proposition W and Proposition S. The outcome will determine the funding framework for wastewater services over the next four years, and potentially stormwater services.

PROPOSITION W

Labeled intentionally with a W for wastewater, Proposition W will present voters with the option of either making an immediate cash payment or opting for a combination of cash and bonds. Just like securing a mortgage for a house, utilizing a mix of cash and bonds distributes expenses over a span of 20-30 years, resulting in lower immediate payments but higher overall costs in the long run. Conversely, choosing to pay upfront requires covering all expenses within the next four years, resulting in higher initial costs but lower overall expenses due to the absence of interest payments.

Customers With Water Meters

A "YES" VOTE

Yearly Change	Average Monthly Residential Bill
---------------	----------------------------------



A "NO" VOTE

Yearly Change	Average Monthly Residential Bill
---------------	----------------------------------

2025	↑ 7%	\$ 61.04	↑ 35.4%	\$ 77.26
2026	↑ 7.6%	\$ 65.66	↑ 35.1%	\$ 104.34
2027	↑ 7.5%	\$ 70.60	↓ 20%	\$ 83.50
2028	↑ 6.6%	\$ 75.23	↑ 5.1%	\$ 87.72

Customers Without Water Meters

A "YES" VOTE

Yearly Change	Average Monthly Residential Bill
---------------	----------------------------------



A "NO" VOTE

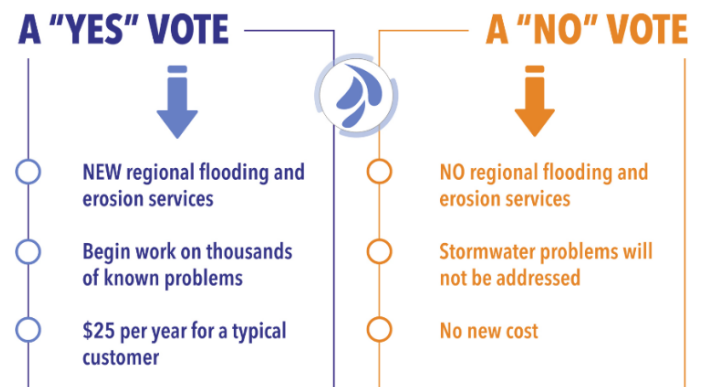
Yearly Change	Average Monthly Residential Bill
---------------	----------------------------------

2025	↓ 0.8%	\$ 67.63	↑ 25.8%	\$ 85.78
2026	↑ 7.6%	\$ 72.75	↑ 35%	\$ 115.84
2027	↑ 7.6%	\$ 78.26	↓ 20%	\$ 92.69
2028	↑ 6.6%	\$ 83.39	↑ 5%	\$ 97.35

Therefore, if a majority of voters vote 'yes' on Proposition W, this will grant MSD an additional \$750 million in bonding authority. If the ballot initiative fails, ratepayers will face a significant increase in their monthly bills. Either way, these wastewater construction projects will receive funding, which is excellent news for contractors. It's solely up to the voters to decide how they prefer to finance it.

PROPOSITION S

Proposition S is focused on addressing stormwater concerns and aims to establish the first-ever regional stormwater improvement program within MSD's service area. MSD's staff reported receiving between 1,100 to 7,200 phone calls in a single year due to flooding and erosion across all areas of the St. Louis Region. Additionally, MSD has identified more than 500 stormwater-related solutions or \$750 million in construction projects throughout the service area. However, funds collected to treat and maintain wastewater services, cannot be used for any other purpose.



If approved, Proposition S would generate about \$35 million a year to pay for stream bank stabilization, erosion control, and in some cases property buyouts. The money would come from two sources: A property tax for residential customers and an impervious surface fee paid by non-residential customers. The average homeowner in the St. Louis region would pay about \$25 per year, while non-residential customers would pay \$1.05 per month per 1,000 square feet of impervious surface (surfaces that do not soak up rain water).

SITE APPRECIATES THE SUPPORT OF THESE COMPANIES



BRIDGING AMERICA'S COMMUNITIES
THAT'S THOMAS PRIDE.

Thomas Industrial Coatings, Inc. is a multi-certified industrial painting and coatings contractor dedicated to quality, safety, and efficiency. We take great pride in our work, and it shows on every job we do across the country.

thomasindcoatings.com (636) 475-3500 For career opportunities please visit thomasindcoatings.com/careers



BUDROVICH

Crane Rental, Excavation and Grading, Utility Services, Land Development, Marine Services, Mechanical Insulation, Rebar Services, Arch City Ironworks

(314) 892-3030
www.budrovich.com



ROLAND MACHINERY CO.
www.rolandmachinery.com

James M. Jesuit
Vice President/
General Manager
St. Louis Division

KOMATSU

Phone: 314-291-1330
Fax: 314-291-8050
Cell: 314-378-2680
Email: jjesuit@rolandmachinery.com

4670 Crossroads Industrial Dr
Bridgeton, MO 63044

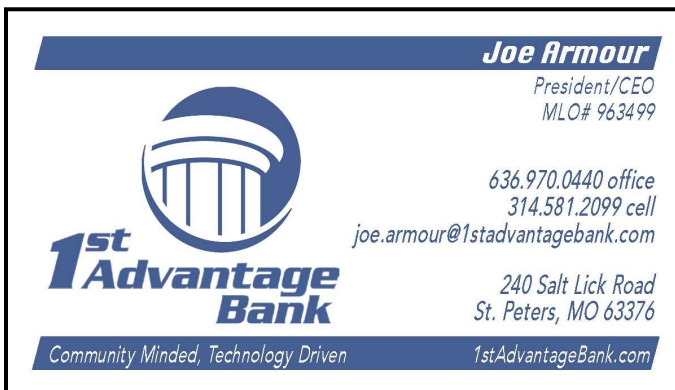


PAT KELLY EQUIPMENT CO.
FAMILY OWNED SINCE 1976

Serving Contractors for 45+ Years
1976 2022

NEW & USED EQUIPMENT | PARTS | RENTAL | SERVICE | SUPPLIES | TOOLS

314-895-9500 | PATKELLY.COM



Joe Armour
President/CEO
MLO# 963499

636.970.0440 office
314.581.2099 cell
joe.armour@1stadvantagebank.com

240 Salt Lick Road
St. Peters, MO 63376

1st Advantage Bank
Community Minded, Technology Driven
1stAdvantageBank.com



Karrenbrock Excavating, LLC

Doug Bierman
Cell: 314-262-1652
doug@karrenbrockconst.com

P.O. Box 279
New Melle, MO 63365

Office: 636-828-5420
Fax: 636-600-5420



CRAFCO INC
PRESERVATION PRODUCTS
Delivering Confidence Through Innovation, Quality and Value Since 1976

Questions? Contact Dave Kasprzyk at 314-348-6497
or email at Dave.Kasprzyk@crafcO.com



Our Services:

- Owners & Contractors Liability Insurance
- Surety / Performance Security
- Subcontractor Default Insurance
- Property & Builders Risk
- Wrap-Up Programs (OCIPs & CCIPs)
- Environmental & Professional Insurance
- Contract Review and Negotiation Support
- Private-Public Partnerships
- Claims Management
- Safety & Loss Prevention
- Executive & Cyber Risk
- Captives

Jeff Stark | CRP Midwest
Cell: (314) 616-2121
jeffrey.stark@constructionriskpartners.com
www.constructionriskpartners.com

SITE APPRECIATES THE SUPPORT OF THESE COMPANIES



MISSOURI PETROLEUM

PRESERVING PAVEMENTS WITH INNOVATIVE SOLUTIONS SINCE 1932

- Asphalt Emulsions & Cutbacks
- Micro Surfacing/Slurry Seal
- Chip Seal
- Asphalt Underseal
- Tire Rubber Modified Asphalt Sealer & Crack Sealants

(314) 219-7305 www.MISSOURIPETROLEUM.COM



LUBY EQUIPMENT

DAVID KEDNEY
EXECUTIVE VICE PRESIDENT

Mobile: 314-412-8567 >>> Work: 636-343-9970
dkedney@lubyequipment.com

Missouri Locations: Wentzville | Fenton | Cape Girardeau
www.lubyequipment.com

CASE CONSTRUCTION TAKEUCHI
FECON TORO

Karrenbrock Construction, Inc.

Greg Karrenbrock
Cell: 314-368-4874
office@karrenbrockconst.com

P.O. Box 279
New Melle, MO 63365

Office: 636-828-5420
Fax: 636-828-5520



COLLINS & HERMANN
INFRASTRUCTURE SOLUTIONS

1215 Dunn Road
PO Box 38901-0901
St. Louis, MO 63138
collinsandhermann.com

Mike Shepard
PRESIDENT | CHIEF OPERATING OFFICER
mshepard@collinsandhermann.com

office: (314) 869-8000 | mobile: (314) 267-0617 | fax: (314) 869-8498



SUNBELT RENTALS

Brandon Morgan
Trench Safety
170 Humboldt Avenue
Saint Louis, MO 63147

314-706-3369 Mobile
314-955-4518 Office
pcm1413@sunbeltrentals.com

WE PROMISE TO
MAKE IT HAPPEN

Your Local MACK & ISUZU Truck Dealer




vanguard TRUCK CENTERS
www.vanguardtrucks.com
Cahokia / St Charles 800-873-6225



Middendorf LOGISTICS

SERVING ILLINOIS & MISSOURI

- Licensed Special Waste Hauler
- Construction Fill Sites in Illinois
- Clean Fill Dirt
- 24/7 Emergency Services
- Associated with certified MBE, WBE, & DBE Companies to Provide Diversity on the Job



DUMP TRUCKS • END DUMPS • SIDE DUMPS • FLAT BEDS
STEP DECKS • LOWBOYS • 75 YARD DEMO TRAILERS

618-540-8446 • themiddendorffcompanies.com



JOHN DEERE | **McCOY**
CONSTRUCTION & FORESTRY



STOP BY ONE OF OUR MISSOURI LOCATIONS TODAY!

Fenton, MO 636-349-0200	Cape Girardeau, MO 573-334-0563
Foristell, MO 636-463-2500	Cuba, MO 573-885-0500

EQUIPMENT SALES | RENTALS | SERVICE | PARTS | TECHNOLOGY

2024 INVESTMENT IN INFRASTRUCTURE EXPO



WOW, what an Expo! SITE hosted its eighth Investment in Infrastructure Expo at the St. Charles Convention Center on February 20, 2024. This year's event was another record breaker, with more than 800 registered attendees, making this the association's largest event in its 58-year history. The expo draws attendees across all areas of the construction industry from the St. Louis metro area and beyond.

Thank you to all the public and private project presenters, sponsoring companies, equipment dealers, contractors, and industry professionals who attended the event for making this the BEST EXPO in the region. SITE is already looking forward to next year.

All the capital improvement presentations are available to view on SITE's website. Click the resources tab on the home page and look for the [2024 Expo Presentations link](#). From there you'll be able to check out anything you may have missed. You can also find a link to view all the photos from the event.

THANK YOU
 — TO OUR —
SPONSORS
 FOR MAKING THE 2024 EXPO
 — A SUCCESS! —

UPCOMING SAFETY & LEADERSHIP DEVELOPMENT CLASSES



EXCAVATION COMPETENT PERSON
TUESDAY, MARCH 12 8:00 AM -12:00PM

OSHA-10
TUESDAY, MARCH 26 8:00 AM -4:00PM
WEDNESDAY, MARCH 27 8:00 AM -12:00PM

**FIELD LEADERSHIP: CREATING AN EFFECTIVE
LEADERSHIP PROGRAM**
TUESDAY, APRIL 2 11:30 AM -1:00PM

FOCUS 4 CONSTRUCTION HAZARDS
TUESDAY, APRIL 9 8:00 AM -12:00PM



SITE Advancement
Foundation will provide up
to six \$5,000 scholarships
for the 2024/25 school year.

Applications are now available!
Visit sitestl.org for Eligibility Rules,
Application Process and 2024
Scholarship Application.

Requirements :

- Must be a son/daughter or step son/step daughter of a full-time employee of a SITE member
- At time of application, must be at least a high school senior
- Must pledge to use any money awarded towards undergraduate college studies/trade school
- Must be a full time student carrying a minimum of 12 credit hours

**Accepting
applications
now through
March 22, 2024**



For More Information
(314) 966-2950



For More Information
www.sitestl.org

APRIL NETWORKING EVENT

Mark your calendar for April 10, and plan on attending one of 2024's LARGEST, SITE Members-Only, networking events at the highly anticipated new venue, Chicken N Pickle!

SITE's membership will have a first-class networking experience with top-shelf drinks, food, and a reserved area overlooking pickleball courts and the massive Chicken N Pickle venue. Nestled within the Streets of St. Charles, this unique venue offers a variety of yard games, and ample outdoor lounging space, creating the perfect setting for networking and fun.

Cost is \$45 per person. Bar sponsorships available for \$100.

Send your entire team! We look forward to seeing you there!

CHICKEN N PICKLE

JOIN SITE FOR AN EVENING OF
NETWORKING!

DATE: WEDNESDAY, APRIL 10
TIME: 5:00-8:00PM
LOCATION: CHICKEN N PICKLE

PRICE: \$45

BAR SPONSOR: \$100



THE YOUNG EXECUTIVES OF SITE



The Young Executives of SITE (Y.E.S.) enthusiastically commenced the year at a Networking Event held at 4 Hands Brewery in Chesterfield, Mo. on February 1, 2024. Both seasoned and newly welcomed members convened for an evening of professional camaraderie and meaningful connections.

The atmosphere at 4 Hands Brewery was vibrant, fostering productive discourse amongst attendees while enjoying a curated selection of craft brews and delectable appetizers, including the popular cheeseburger eggrolls catered by Hi-Pointe.

The event exemplified the robust community spirit within Y.E.S., with diverse industry professionals coming together to exchange insights and perspectives. These interactions underscored the strength and value of our collective network.

Y.E.S. is gearing up for the Missouri State Capitol trip on March 6. This educational event offers members an opportunity to learn about the legislative process and engage directly with House and Senate members. The group learns about real-time issues facing the legislators and their unique roles in advancing legislation to final passage. Y.E.S. members also learn about how to advocate for their industry.

YOUNG EXECUTIVES OF SITE 2024 CALENDAR OF EVENTS

APR 10 Networking Event
Chicken N Pickle

JUN 19 Field Trip
Location: TBD

OCT 10 Clay Bird Shoot
Black Hawk Valley

NOV 06 Leadership and Development Event

JANUARY GENERAL MEMBERSHIP MEETING

Newly elected president of SITE, Mike Shepard with Collins & Hermann, Inc, kicked off the first General Membership Meeting of the year held on Wednesday, January 10, at Syberg's. President Shepard shared exciting future plans of the growing membership and the new training facility along with some upcoming events and legislative initiatives. SITE welcomed Matt Sebeck, the Chief Experience officer (CXO) of the St. Louis City, SC. He is the first CXO in major league soccer and provided insight into how technology and fan-integrated experiences in St. Louis continue to shape the future of soccer matches and stadium options.



MANAGEMENT SEMINARS

From January 24 to 31, nearly 70 SITE members traded the St. Louis chill for the sunny shores of the Dominican Republic during the annual Management Seminar trip. Immersed in the Secrets Royal Beach Punta Cana resort, attendees enjoyed a blend of professional development, relaxation, and Caribbean adventure.

Randy Crabtree of Tri-Merit Specialty Tax Professionals addressed the signs of Employee Burnout with his own personal journey, which led from stress-induced strokes to professionally speaking on mental health. This insightful session offered actionable steps to cultivate a healthier and more productive work environment, empowering attendees to unlock their employees' full potential.

A diverse range of topics fueled the second day of learning. Crabtree returned with "Accounting Strategies for Your Business," offering financial management tips, tax planning strategies, and software tools. Alberto Reyes-Baez of Guzman Ariza, Attorneys at Law, navigated the intricacies of "Construction Work in the Dominican Republic," while Tony Soukenik provided valuable insights into "The Corporate Transparency Act" and its implications for businesses.

Not all learning happened within four walls! Over half the group embarked on a thrilling "Caribbean Pirates Tour & Snorkeling" excursion. Snorkeling amidst vibrant coral reefs, encountering nurse sharks, and interacting with majestic manta rays created unforgettable memories.

A huge round of applause goes to the Management Seminars Committee for their tireless efforts in planning and executing this successful trip. Stay tuned for details on the 2025 adventure!





CONTRACTOR MEMBERS

Concrete Division

Alfred F. Mullen Concrete Contracting Co.	Mike Mullen	(314) 966-0177
Birkemeier Construction, Inc.	Jeff Birkemeier	(636) 978-8892
Boling Concrete Construction	Cindy Boling	(314) 772-6300
Builder's Bloc Contracting Services, LLC	Kevin Deptula	(314) 336-0200
Byrne & Jones Concrete	Kevin Klette	(618) 578-0931
Concrete Strategies, LLC	Pat Moriarity	(314) 595-6300
Contegra Services, LLC	Jim Mundy	(618) 219-4895
Fenix Construction Company	Steve Ladenberger	(314) 892-4700
Hawkins Construction and Flat Work LLC	Bob Hawkins	(636) 409-1115
HF Flatwork	Carl Hines	(636) 262-2684
J.S. Aubuchon Concrete Company	Jerry Aubuchon	(636) 661-5655
Joint Sealing Solutions	Blake Gamber	(314) 229-1460
Karrenbrock Construction, Inc.	Roger Karrenbrock	(636) 828-5420
Musselman & Hall Contractors, LLC	Keith Ahal	(314) 739-1142
Next Level Construction, LLC	Charlie Vitale	(314) 575-0285
Obax Infrastructures/O'Basuyi Construction	Patrick O'Basuyi	(314) 462-0620
Oreo & Botta Concrete Company	Tom Milne	(314) 427-3800
R. V. Wagner, Inc.	Dan Wagner	(314) 892-1600
Scharf Construction Co., LLC	Rick Scharf	(314) 869-0060
Spencer Contracting Company	Tony Spencer	(314) 843-5166
T and T Contracting Company	Malcom Thompson	(314) 267-3114
Vee-Jay Cement Contracting Company, Inc.	Stephen Krieger	(314) 351-3366
Vision Civil Construction, LLC	Julie VanCardo	(314) 445-2020

Earthmoving Division

Ballmann Earthworks, LLC	Jon Ballmann	(636) 236-4242
Bloomsdale Excavating Co., Inc.	Scott Drury	(573) 483-2564
Brandt Contracting, Inc.	Sedrick Brandt	(636) 352-4818
Budrovich Excavating & Contracting	Jeff Budrovich	(314) 892-3030
Busken Construction Company	David Busken	(314) 630-8866
K. J. Unnerstall Construction Company	Kurt Unnerstall	(636) 239-2028
Kamadulski Excavating	Ryan Fisher	(618) 931-3760
Kendall's Hauling LLC	Kendall Davidson	(314) 517-0905
Kuesel Excavating Co., Inc.	Mike Steiniger	(636) 978-3478
McFry Excavating, Inc.	Tom Jones	(636) 386-4779
Nor-Vel Grading & Excavating, LLC	Matt Beckmann	(636) 387-1888
PCX Construction, LLC	Matt Clark	(636) 287-1848
Rich Gullet & Sons, Inc.	Randy Gullet	(636) 271-2327
Sellenriek Grading Company, Inc.	Drew Sellenriek	(636) 938-9299
Semke Grading, LLC	Brenda Semke	(636) 250-4225
T & M Excavating, Inc.	Tony Gonzalez	(314) 220-3576
Town & Country Grading, Inc.	Alan Laughlin	(636) 475-7887

Asphalt Paving Division

Accurate Asphalt Paving Co., Inc.	Dan Lucas	(636) 343-5199
Byrne & Jones Construction	Brian Goggins	(314) 567-7997
E. Meier Contracting, Inc.	Rod Fain	(636) 300-0908
Ford Asphalt Company, Inc.	Brad Fritsche	(314) 291-2600
Jokerst Paving & Contracting	Grant Jokerst	(636) 937-7101
Keeley Construction	Matt Taylor	(314) 421-5933
Leritz Contracting, Inc./Busy Bee Paving, Inc.	Joe Leritz	(314) 821-2615
Missouri Petroleum Products Company	Mike Hartman	(314) 219-7305

Landscaping Division

A. Waldbart & Sons Nursery	Jay Behle	(314) 895-4589
Baker Landscaping	Adam Baker	(636) 282-4140
Baxter Farms & Nurseries	Adam Guthrie	(314) 542-9400
Conoyer Brothers Landscaping, Inc.	Craig Conoyer	(636) 397-7217
DJM Ecological Services, Inc.	Doug Bauer	(314) 478-2388
ECO Constructors	Shawn Garland	(636) 561-3158
Frisella Nursery & Landscape Group	Tony Frisella	(636) 798-2555
Givens Contracting LLC	Carl Givens	(573) 619-9959
Greenspace Landscaping	Stephen Kelly	(314) 895-8860
Jenkins & Sons Lawn Care, LLC	Anthony Robins	(314) 485-7002
Just in Time Lawn Care	Justin Augenstein	(636) 328-5886
LanDesign, LLC	George Tucker, Jr.	(636) 332-4500
MACC Contracting	Alex Straughn	(573) 745-7659
Midwest Construction Services	Cindy Thorne	(636) 337-7290
Midwest Turf Contractors	Charly Keeven	(636) 926-9988
Missouri Constructors	Gabriel Cardenas	(636) 358-3535
Professional Irrigation Systems	Jon Lauer	(636) 695-7800
Roden's Landscaping, Inc.	Steve Roden	(636) 561-3947
ROSCH Midwest, LLC	Scott Rozier	(636) 519-7770
Schaefer-Meyer Seed-Sod Div. 1, Inc.	Greg Meyer	(636) 947-7173
Site System Landscaping, LLC	Kathy Roden	(636) 332-7333
Stormwater Pro-ject STL, LLC	Drew Hane	(314) 315-5696

Highway/Bridge Division

AMCON Municipal Concrete, LLC	Paul Amelong	(636) 379-9396
Brewster Companies	Craig Schmidt	(314) 409-5149
Gershenson Construction Co., Inc.	Ed Gershenson	(636) 938-9595
KCI Construction	Tory Moorman	(314) 894-8888
M & H Concrete Contractors, Inc.	Rick Matteson	(636) 379-9682
Millstone Weber, LLC	Chris Gottman	(636) 949-0038
N.B. West Contracting Company, Inc.	Jim Fitzgerald	(314) 962-3145
Pace Construction Company	Ryan Casey	(314) 524-7223
Pavement Solutions, LLC	Matt St. John	(636) 970-2727

Sewer/Utility Division

Bahr Hydroexcavation, LLC	Leslie Bahr	(314) 809-1172
Bates Utility Company, Inc.	Tim Bates	(636) 939-5628
Bi-State Utilities Company	Mike Jerome	(314) 209-0202
C2 Service Group, Inc.	Lorri Keenum	(636) 283-5031
C.E. Bollmeier Co., Inc.	Bill Bollmeier	(314) 298-7885
Castle Contracting, LLC	Brian Carlson	(314) 421-0042
David Mason + Associates	Spencer Mason	(314) 534-1030
Fred M. Luth & Sons, Inc.	Mike Luth	(314) 771-3892
Girdner Contracting LLC	Bridget Girdner	(314) 605-4301
J & J Boring, Inc.	Jennifer Bouquet	(636) 566-6766
J & S Industrial Services, LLC	Billy Kinkel	(888) 217-6811
J.H. Berra Construction Company, Inc.	Frank Berra	(314) 487-5617
J.W. Bommarito Construction Co., Inc.	Joe W. Bommarito	(314) 353-0104
Karrenbrock Excavating LLC	Doug Bierman	(636) 828-5420
Kelpe Contracting, Inc.	Tom Kelpe	(636) 458-1400
M. Turpin Services	Mitchell Turpin	(636) 262-6230
Poeling Construction	Shane Poeling	(636) 463-2437
S & S Utility Contracting Company, Inc.	Danny Purler	(314) 220-5161
SAK Construction	Jerry Shaw	(636) 385-1500
SweenCo LLC	Sarah Sweeney	(636) 699-6882
Southern Ditching & Excavating Company	T.J. Moor	(636) 441-1112
TaylorMade Construction, LLC	Andre Taylor	(314) 868-1005
Unnerstall Contracting Company, LLC	Steve Unnerstall	(636) 257-3003
Williams Tunnelling Industries, Inc.	Edison Williams	(832) 889-1468
XL Contracting, Inc.	Ken Novel	(636) 970-2710

Specialty Division

AgriCycle, Inc.	Justin Davis	(636) 861-3344
All Star Concrete Pumping	Keith Dennis	(636) 475-9539
Andis Industrial Field Services	Joe Romaine	(314) 581-8298
Badger Daylighting Corporation	Benji Koonce	(314) 954-7192
Cherokee Hauling, LLC	Mike Tallis	(314) 393-7112
CMK Excavation	Carter Kuenzel	(636) 303-9831
CNC Foundations, Inc.	Tom Layne	(618) 213-8853
Collins & Hermann, Inc.	Mike Shepard	(314) 869-8000
Custom Service Crane	Brian Klitzing	(217) 897-1700
Drainscapes	Casey Graves	(314) 892-9888
Drilling Service Company	Sean Jackson	(314) 291-1111
Dynamic Logistics	Malcolm Nyatanga	(314) 562-6999
Elastzell of St. Louis, Inc.	Jane Megown	(636) 225-4311
Fick Supply Service, Inc.	Dave Fick	(314) 560-0146
George McDonnell & Sons Tuckpointing Co., Inc.	Debbie Giebe	(314) 739-0468
Gerstner Electric, Inc.	Chris Gerstner	(636) 349-5999
GS Grinding Services, LLC	Dave Grimes	(636) 474-1183
Hansen's Tree Service & Environmental Resources	Ken Byrne	(636) 379-1830
Hillsdale Demolition Contracting	Lakkia Davis-Hynes	(314) 899-0333
i3 Broadband	Mike Elam	(314) 440-1445
Ideal Landscape Group	Dave Buckel	(314) 892-9500
J&R Concrete Services, LLC	Stephanie Johnson	(314) 596-2311
Jath Construction Company	Trish Herron	(314) 323-0288
Kurtz Nursery and Topsoil	Matthew Kurtz	(636) 405-2667
McConnell & Associates Corporation	Greg Lucas	(314) 962-1920
MW Drone Photography	Mark Wheeler	(314) 398-2569
Native Landscape Solutions, Inc.	Chuck Caverly	(314) 544-7918
Next Contracting	Abby Haefner	(618) 910-9468
Premier Demolition, Inc.	Bill Buell	(314) 645-5566
Reinhold Electric, Inc.	Jerry Reinhold	(314) 631-1158
Thomas Industrial Coatings, Inc.	Don Thomas	(636) 475-3500
Traffic Control Company	Lance McCarthy	(636) 225-7800
Traffic Management, Inc.	Joe Potter	(314) 943-5284
TraMar Contracting, Inc.	Peggy McGrath	(636) 255-0808
TSI Global Companies	Tim Agler	(314) 220-2768
Two Alpha Contracting, LLC	Rhiannon Parisi	(636) 384-1296

January/February



ASSOCIATE MEMBERS

1st Advantage Bank	Joe Armour	(636) 970-0440	Kienstra Co.	Dan Bruns	(314) 994-1616
24/7 OnSite Cameras	Nick Bartolotta	(314) 718-0453	Kirby-Smith Machinery, Inc.	Matt Nelson	(314) 729-0125
Acuity Insurance	AJ Gajdosik	(636) 287-2068	Kohrs Truck & Auto Repair, Inc.	Harold Kohrs	(636) 240-7935
Advanced Drainage Systems	Brian Snelson	(618) 593-6135	Lizmark Branded Solutions	Liz Tillman	(314) 394-0901
American Steel Fabrication, Inc.	Tim Thomas	(636) 475-7272	Luby Equipment Services	David Kedney	(636) 343-9970
Amundsen Davis LLC	Daniel Peters	(314) 719-3700	Luby Shoring Services, LLC	John Powell	(636) 660-7467
Archview Services	Alan Jackson	(314) 474-7800	M&T's Capital and Leasing Corp	Mike Range	(618) 606-1661
ASP Enterprises, Inc.	Don Thieman	(636) 343-4357	Magruder Limestone Company, Inc.	Shelby Rowland	(636) 528-4180
Bank of Old Monroe	Jenni Linton	(363) 665-5601	Marsh McLennan Agency - St. Louis	Pete Mohs	(314) 594-2700
Bank of Springfield (BOS Bank)	Daniel Steiniger	(314) 888-6693	MayeCreate, LLC	Stacy Brockmeier	(573) 447-1836
BITCO Insurance Companies	Chris Demse	(314) 822-4446	McCoy Construction and Forestry	Andy Flinn	(636) 349-0200
Bobcat of St. Louis	Ben Allen	(636) 225-2900	Middendorf Logistics, Inc.	Doniella Snyder	(618) 540-8446
Buckingham Wealth Management	Elliot Dole	(314) 743-2234	Midland States Bank	Maurice Allen	(314) 512-8535
Carmody and Associates, Inc.	Robert Carmody, Jr.	(618) 231-8899	Midwest Monograms	Lisa Jury	(314) 565-6116
Central Power Systems	Chuck Bauers	(314) 427-4911	Mississippi Valley Equipment Company	Bob Clapsaddle	(314) 869-8600
Central Stone Company	Randy Hackworth	(314) 830-9000	Missouri Employers Mutual	Mark Woodward	(573) 289-5990
Champion Precast, Inc.	Joel Anderson	(573) 384-5855	Neenah Foundry Company	Greg Hornbuckle	(314) 614-3627
Charles L. Crane Agency Company	Frank Rebholz III	(636) 537-5641	New Frontier Materials	Rusty Durbin	(314) 473-3434
City Rent a Truck	James McKinley	(314) 231-3100	Nu Way Concrete Forms, Inc.	Mike Townsend	(314) 544-1214
Clayton Engineering Company, Inc.	Steve Quigley	(314) 692-8888	OMG Construction Services	Tim Tobin	(314) 749-9113
CMIT Solutions	Dave Roberson	(314) 639-0143	Pacific GeoSource	Allen Akowicz	(636) 439-0341
CMW Equipment	Larry Glynn	(314) 993-1336	Pat Kelly Equipment Company, Inc.	Brian Kelly	(314) 895-9500
Commerce Bank	Shad Becker	(314) 746-5272	Paylocity	Libby Emmer	(314) 369-9540
Consolidated Pipe & Supply Company	Chris Hausmann	(636) 825-6678	Peoples Savings Bank	Don Meyer	(636) 398-5600
Construction Risk Partners	Jeff Stark	(314) 616-2121	Purple Wave Auction	Scott Broz	(636) 725-6737
Contech Engineered Solutions, LLC	Rob Richardson	(417) 459-7875	Rackers & Fernandez, LLC	Sergio Fernandez	(636) 498-1900
Contractor Solutions	Wayne Reed	(816) 610-9331	Ritchie Bros. Auctioneers	Andrew Dillard	(618) 792-1670
Core & Main	Randy Bradley	(314) 432-4750	Roadbuilders Machinery & Supply	Cody Swim	(913) 371-3822
County Prestress & Precast, LLC	Lyndell Borcherding	(618) 548-1190	Rock Hill Quarries Co.	Bruce Dresser	(314) 968-2336
Crafco, Inc.	Dave Kasprzyk	(314) 348-6497	Roland Machinery Company	James Jesuit	(314) 291-1330
Craneworks	Dan Christian	(636) 495-6080	RubinBrown LLP	Ken Van Bree	(314) 290-3429
Dan Althoff Trucking, Inc.	Dan Althoff	(636) 677-7772	Rudd Equipment Company	John Robinson	(314) 487-8925
The Daniel and Henry Co.	Richard Boyette	(314) 444-5011	Rush Truck Centers of Missouri, Inc.	Justin Demers	(314) 449-7200
Elm Production and Marketing	Lacy Gevers	(573) 220-7843	Safety International	Mike Sicking	(636) 498-4476
Energy Petroleum Company	Steve Madras	(314) 383-3700	Safety Training Resources	Jeff Viehmann	(314) 808-3502
Enterprise Bank & Trust	Brian Geen	(314) 543-3914	Sandberg, Phoenix & von Gontard, P.C.	Tony Soukenik	(314) 446-4279
Enterprise Truck Rental	Gable Fortune	(314) 803-4170	Schmersahl Treloar & Co.	Mark O'Donnell	(314) 966-2727
EquipmentShare	David Meyer	(636) 459-8640	SCI Engineering, Inc.	Karl Koenigsfeld	(636) 949-8200
Fabick Cat	Scott Crean	(636) 626-8948	Simpson Materials Company	Steve Simpson	(636) 343-4944
FasTrac Construction Products	John Caldwell	(913) 951-9438	SLC3	Kelly Jackson	(314) 278-8241
Federated Insurance	Cole Waddell	(316) 617-7880	St. Louis Composting	Roy Gross	(636) 861-3344
First Bankers Trust Company	Clay Shackelford	(314) 435-4144	Stormwater STL LLC	Steve Polk	(314) 406-7655
Fred Weber, Inc.	Tom Greco	(314) 473-3419	Sunbelt Rentals Shoring Solutions	Brandon Morgan	(314) 955-4518
G.S. & S.	Chris Hyams	(314) 298-8100	Topcon Solutions	Terry Gammill	(816) 985-1791
Gateway Dredging & Contracting, LLC	Terry Bangert	(636) 665-5180	Total Safety Solutions LLC	Andrew Tuttle	(636) 388-2685
Hanes Geo Components	Steve Wright	(636) 875-7317	Tramelli Contractor Supply	Jim Tramelli	(314) 429-4100
Hayden Machinery LLC	Jeremy Hancock	(314) 550-1400	UHY Advisors, Inc.	Marianne Biangardi	(314) 208-2501
Herc Rentals ProSolutions	Jim Neal	(636) 696-4022	United Rentals	Angie Wheeler	(314) 267-7621
Heritage Petroleum, LLC	Tracy Schau	(314) 250-1434	United Rentals -Trench Safety	Ron Voegtl	(314) 729-0003
Horton Supply	Cody Edwards	(314) 791-0760	USI Insurance Services LLC	Clinton Happe	(314) 342-7158
Interstate Testing Services	Andy LaPlante	(314) 994-0641	USIC	Ken Spencer	(970) 219-3000
ISCO Industries, Inc.	Craig Rahlfs	(314) 973-0992	Vanguard Truck Centers	Dan Green	(618) 857-7625
IVO Systems, Inc.	Eric Christensen	(414) 405-2648	Vermeer Midwest, Inc.	Chad Van Soelen	(636) 532-2332
J.D. Kutter	Kim Connell	(314) 444-4949	Wallis Lubricants	Kati Douglas	(636) 271-0900
John J. Guilfooy & Associates, LLC	John Guilfooy	(314) 781-1122	Warrenton Oil Company	David Baker	(636) 456-3346
K & K Supply Inc.	Joe Backer	(636) 349-1141	Western Ready-Mix, Inc.	Tom Auck	(636) 519-1522
K & P Precast, Inc.	Tammy Daugherty	(636) 978-3111	Wieser Concrete Products, Inc.	Drew Wieser	(618) 251-9210
Key Equipment & Supply Co.	Katie Westfall	(800) 325-4323	Winter Brothers Material Company	Ryan Winter	(314) 843-1400

MAKE SITE WORK FOR YOU

January/February

Call on SITE members for the highest quality products and services

LABOR RELATIONS

LABORERS' UNION NEGOTIATIONS AND WAGE NOTIFICATION

SITE and the Missouri Kansas Laborers District Council recently concluded contract negotiations before the March 4 expiration date. The new five-year contract will expire in June of 2029.

2024 Wage Notices for Heavy/Highway, Commercial, and Residential wage rates for laborers locals 42, 110, 660, 955, 1104, 662, and 840 were sent out to contractors on February 21. The effective dates of the increases vary by local and type of work. Should any member have any questions or would like additional copies, please contact Jeremy Bennett at SITE's office.

OPERATING ENGINEERS LOCAL 513 WAGE NOTIFICATION

2024 Wage Notices for Heavy/Highway, Commercial, and Residential will be sent out as soon as the union allocates their \$3.00/hr increase; typically, those are sent out in March. The effective date is Monday, May 6.

Local 513 retirees are still on a 40-hour-per-week restriction. If the trustees choose to lift the restriction, SITE will send notices out to our members.

CEMENT MASONS WAGE NOTIFICATION

2024 Wage Notices for Heavy/Highway, Commercial, and Residential wage rates will be sent out to contractors in March. The effective date of their \$1.60 increase will take place on Monday, April 1.

Recently at the Saint Louis Construction Cooperative meeting, a joint labor and management group, there was a discussion about manpower for the upcoming 2024 construction season. The group col-

lectively talked about upcoming projects and the amount of work that owners in the Saint Louis area are getting ready to bid. Both labor and management estimate a flat increase in manhours for 2024. Below are the employment percentages for each trade in Saint Louis. As you can see, many of the trades even in January and February are near full employment.

96% Operators	100% Plumbers & Pipefitters
99% Laborers	98% Electricians
99% Cement Masons	98% Sheet Metal Workers
99% Teamsters	95% Carpenters
99% Iron Workers	99% Sprinkler Fitters
99% Insulators	99% Painters
99% Brick Layers	99% Boiler Makers

Even with a flat projection in manhours over 2023, expect there to be more manpower issues into 2024. Expect labor and management to relax the suspension of benefits provisions to allow retirees to work more hours. Labor and management are also both encouraging contractors to hire apprentices and groom the next generation of construction workers. Should you have any questions about hiring an apprentice or individuals off the street, please reach out to me at SITE's office.



FROM THE SAFETY SIDE

At the beginning of every quarterly SITE and OSHA Partnership meeting, we typically begin with a speaker who presents some safety related topic. This month, we changed the format and since February is also recognized as American Heart Month, we had a roundtable discussion on sudden cardiac arrest.

As you may know, sudden cardiac arrest is when your heart immediately stops beating or beats extremely fast. When people have sudden cardiac arrest, they are not awake. They are unresponsive, not breathing normally, and they quickly need CPR and an AED (Automated External Defibrillator).

AEDs are sophisticated but easy-to-use medical devices that analyze a person's heart rhythm and, if necessary, deliver an electrical shock to help the heart re-establish a normal heartbeat. However, purchasing numerous AED devices can be very expensive especially, if you own a larger company, as the average price for a new AED medical device ranges from \$700-\$1,800.

What's the best solution?

Office Accessibility

During the roundtable discussion, every contractor recognized the importance of having an AED device, and most members already had an AED medical device in their office building. Therefore, your company should at least own one AED device in your office, and every employee should know where it is located. This is critical as most office staff perform sedentary work (sitting most of the time) and are at greater risk of having a cardiac event. Being inactive can lead to fatty material building up in your arteries (the blood vessels that carry blood to your organs). If the arteries that carry blood to your heart get damaged and clogged, it can lead to a heart attack.

Jobsite Accessibility

With any type of cardiac event, time is critical. The chance of surviving cardiac arrest after 10 minutes is very low. Ideally, it would be fantastic if every work vehicle in your company's fleet had an AED medical device equipped in them. That's why it's critical for your employees to know the location of an AED device. However, what if you're on a jobsite located on a highway or near a shopping center? One great piece of advice shared among the contractors is if your crew is near a large retailer (Wal-Mart) or business, they will likely have an AED device on site. If you have the option, send a co-worker to retrieve the device.



First Aid Training

While a lot of private owners and general contractors in the St. Louis area require a minimum OSHA-10 certification for all employees working on the job, some require OSHA-30 too. While this is great for overall safety, these classes don't cover CPR techniques and how to use an AED device. That's why it's important for every supervisor on the job to be first aid certified with CPR and AED training. Also, if your employees have not received first aid training, they should know who is CPR and AED trained onsite. Every contractor in the roundtable discussion noted that their companies required every supervisor within their respective companies to be CPR, First Aid, and AED Certified.

Overall, it's important for your company to develop an emergency response plan for all types of situations. Make sure your employees know the address of the jobsite for 911 emergency responders. Lastly, if you have an AED machine onsite, your employees should know where to locate it.



2071 Exchange Dr.
St. Charles, MO 63303
(314) 966-2950
Fax: (314) 966-2999

President

Mike Shepard - Collins and Hermann, Inc.

Vice President

Kurt Unnerstall - K.J. Unnerstall Construction Co.

Secretary/Treasurer

Kevin Klette - Byrne & Jones Construction

Executive Director

Jeremy Bennett

WWW.SITESTL.ORG

2024 PLANNED EVENTS

Wed., April 10	NETWORKING EVENT Chicken N Pickle
Wed., May 1	GENERAL MEMBERSHIP MEETING Syberg's - Dorsett
Wed., June 12	NETWORKING EVENT CITYPARK - St. Louis City SC Stadium
Mon., Aug. 12	SITE GOLF TOURNAMENT & DINNER Norwood Hills Country Club
Thu., Oct. 10	CLAY BIRD SHOOT Black Hawk Valley Hunt Club
Wed., Oct. 31	JOINT SITE/APWA GENERAL MEMBERSHIP MEETING Orlando's Events Centers
Wed., Nov. 6	M/WBE AND NON-M/WBE MEET & GREET Schlafly Tap Room
Thu., Dec. 12	HOLIDAY HAPPY HOUR Bogey Hills Country Club

Visit sitestl.org for future event updates or to register for upcoming events.