



ST LOUIS REGIONAL FREIGHTWAY

Your Gateway to the World

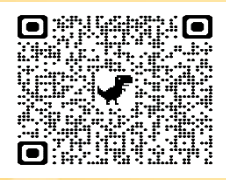
2025 Investment in Infrastructure Expo
February 19, 2025

About St. Louis Regional Freightway

- Founded in 2014 as an enterprise of Bi-State Development
- Coordinates regional freight development efforts, tightly connecting the private and public sectors while advocating the region's greatest logistics and site selection strengths
- Works to enhance and optimize the region's freight network/strengthen modal flexibility
- Supports workforce development initiatives that build our talent supply chain
- Raises awareness about the global connectivity the St. Louis region offers that makes it a premier international freight hub and a great location to establish or grow a business

Freight Development Committee

- Responsible for setting regional *multimodal* transportation priorities used as a tool to advocate for infrastructure funding with public and private sector leaders.
- **Public-Private partnership** – collaborative, not financial: Comprised of public sector influencers and supply chain leaders who represent freight-related interests of the St. Louis region’s business community
- Sets infrastructure priorities based on a project’s ability to lower freight transportation costs and optimize the freight network.




Freightway Priority Projects List

Project-specific and regional freight advocacy efforts

- 2025 Priority Projects List: **27 projects totaling \$8B+** (including \$2.8B for the new STL Airport Terminal)

- Projects Completed: \$537 Million**
- Projects Fully Funded: \$2.3 Billion**
- Projects Partially Funded: \$93 Million**

- Represents infrastructure needs of the manufacturing and logistics industries; indicates tremendous progress on projects to strengthen critical roads, bridges, rail infrastructure and port/airport facilities.



ST LOUIS REGIONAL FREIGHTWAY ■ 2025 PRIORITY PROJECT

MacArthur Bridge Improvements over the Mississippi River (MO-IL)

Fully Funded

The St. Louis Regional Freightway conducted a regional needs analysis to identify network constraints. Projects were evaluated based on five primary criteria: safety and security in travel, efficiency impact, multimodal impact, economic impact and project readiness. Based on the criteria, the following project addresses regional freight needs and is considered a **high priority** for the region.

The MacArthur Bridge over the Mississippi River supports national freight movement and the future of farmers, manufacturers, and distributors who depend on it. This bridge helps link America's eastern and western freight rail networks and serves six Class I Railroads and Amtrak. The St. Louis region is one of the largest freight hubs in the nation by car interchange volume and gross tonnage.

PROJECT NEED Construction on the original MacArthur Bridge was completed in 1912. Collectively, the MacArthur Bridge and Merchants Bridge represent the highest-volume rail crossing on the Mississippi River. While the replacement of the Merchant's Bridge was completed in Fall 2022,


LOCATION
Mississippi River, Mile Marker 179, St. Louis, Missouri and East St. Louis, Illinois

ESTIMATED COST
\$57.6 million

OWNER
Terminal Railroad Association (TRRA)

CONTACT
Eric Fields
Chief Engineer
Terminal Railroad Association of St. Louis
(618) 451-8428

PROJECT FUNDING
The project received \$28.8 million from the Consolidated Rail Infrastructure & Safety Improvements (CRISI) program. The remaining project costs are being covered by the TRRA.



May 2024 26



Freightway Priority Projects List

Funded Highest Priorities - Current Opportunities

MacArthur Bridge over the Mississippi River

Estimated Cost: \$70 M

Replace truss over UP railroad, steel repair, replace existing rail except for the main spans and west approach.

Owner: Terminal Railroad Association of STL
Letting anticipated spring/summer 2025



I-64 Improvements from Green Mount Rd

Estimated Cost: \$67M

Widen I-64 to six lanes and safety improvements at Green Mount Rd

Owner: IDOT

Letting anticipated calendar year 2025



Freightway Priority Projects List

Funded Highest Priorities - Current Opportunities

New Terminal STL Lambert International Airport

Estimated Cost: \$2.8 B

*Jan 2025 – HOK selected as design team.
If all continues to go as planned, project
could break ground late 2026/early 2027.
Project is partially funded.*

Project could break ground late 2026/early 2027

I-70 from MO River to North Hanley Rd

Estimated Cost: \$175 M Not Funded

*Project is adjacent to STL Lambert Airport.
3rd lane on I-70 with interchange and
includes interchange improvements.
Project is included with MoDOT's high
priority unfunded list.*

Photo: MoDOT



Freightway Priority Projects List

Funded Highest Priorities - Current Opportunities

Realignment of Existing Port Entrance & Construction of New Riverview Plaza Dr Estimated Cost: \$2M

Designed for the efficient movement of heavy industrial traffic to and from I-55 directly to the waterfront.

Owner: Jeff Co Port District, MO
Letting anticipated in calendar year 2025

Construction of New Broadway Extension & Realignment of Existing Utilities Estimated Cost: \$2M - \$4M

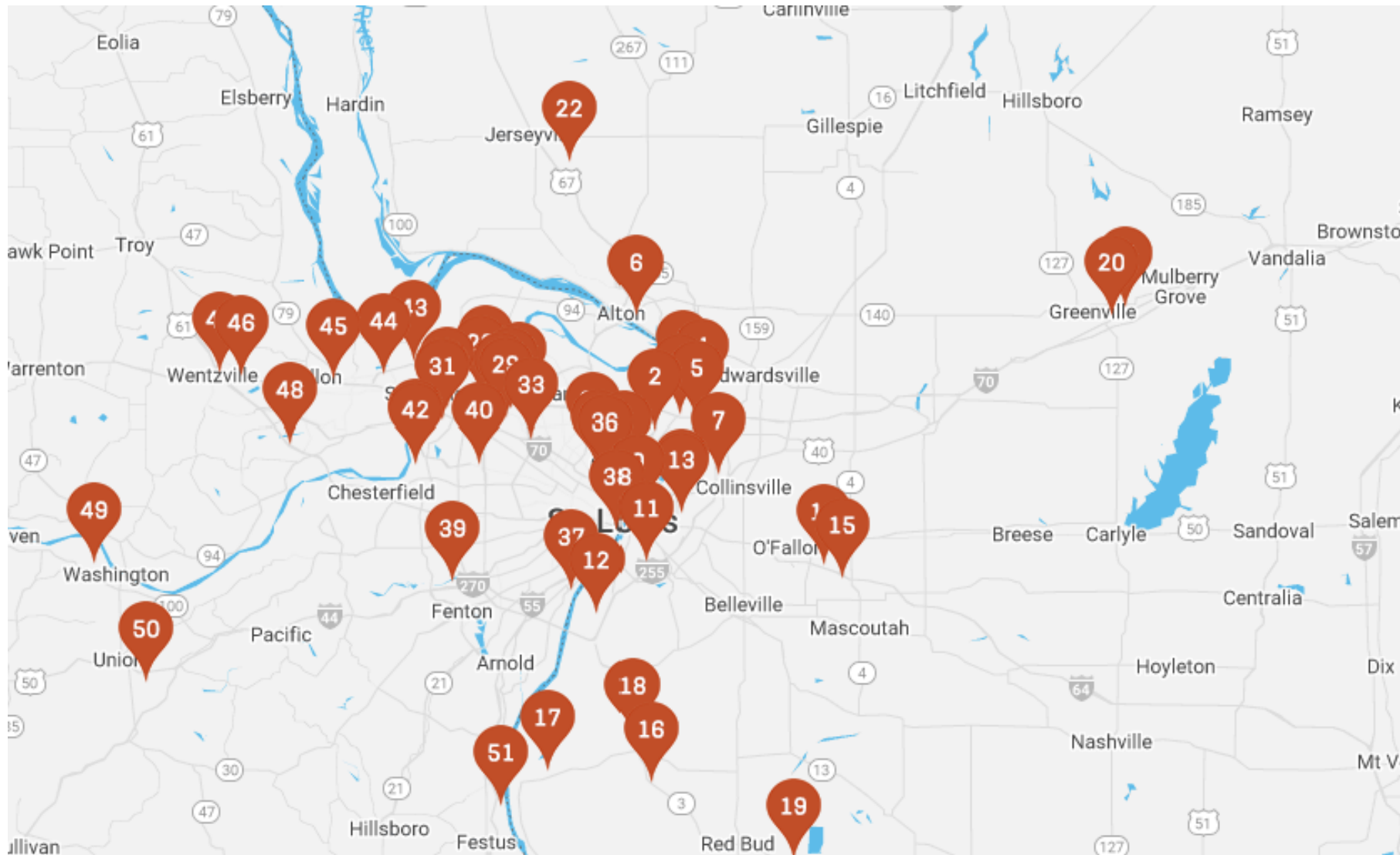
This work will allow Doe Run to consolidate several parcels into one new 65-acre greenfield site that is part of a 250 – 300 acre overall site.

Owner: Jeff Co Port District, MO
Letting anticipated in calendar year 2025





Fasting growing Industrial Real Estate Sites & Updates



New sites being added:

- Gateway South Industrial Redevelopment
- Red Bud Business Park
- TRRA Land Sites expanded to include 4 new



ST. LOUIS REGION

RAIL SITES MAP

Rail Sites Updates

- | | | |
|---|--|---|
| 1 Interstate Commerce Center
Wentzville, MO | 2 Carrie Avenue Industrial Park
St. Louis City, MO | 3 River City Business Park
St. Louis City, MO |
| 4 BNSF Site—Fenton*
Fenton, MO | 5 Kaskaskia Regional Port District*
Red Bud, IL | 6 TRRA – Metro East Land*
Venice & East St. Louis, IL |
| 7 America’s Central Port
Granite City, IL | 8 Route 3 Industrial*
Granite City, IL | 9 Lakeview Commerce Center
Edwardsville, IL |
| 10 Gateway Panattoni
Edwardsville, IL | 11 Mid-American Inter'l Gateway
Jerseyville, IL | 12 Kelsey Business & Tech Park
Greenville, IL |



- | | | |
|---|---|---|
| 13 Herculaneum Port Site
Herculaneum, MO | 14 Granite City Buildings & Land
Granite City, IL | 15 Admiral Pkwy Dupo Development
Dupo, IL |
| 16 Forest Blvd Site*
East St. Louis, IL | 17 Wiggins Industrial Lead
East St. Louis, IL | 18 Madison Yard
Venice, IL |
| 19 Wiggins 2 Yard
East St. Louis/Brooklyn, IL | 20 Wiggins 5
East St. Louis, IL | |

*Additional site work needed to get to shovel-ready status

Now 20 locations with 25 sites!

- 4 New TRRA Locations



Build awareness that attracts industrial real estate brokers and site selectors who support manufacturing and logistics developments.

CONSTRUCTION DIGEST

November 2024
ACP



St. Louis Regional Freightway's 2025 List of Priority Projects Tops \$8B in Investments

ACP
903 E. Ohio St.
Indianapolis, Indiana 46202
ELECTRONIC SERVICE REQUESTED
3-DIGIT 631
50900 P-1 146
PAMELA POWELL
THE HARBOR OFFICE
12813 FLYING MEADOWS DR STE 202
SAINT LOUIS MO 63131-1835

Priority Projects Deliver!

St. Louis Regional Freightway's 2025 List of Priority Projects Tops \$8B in Investments

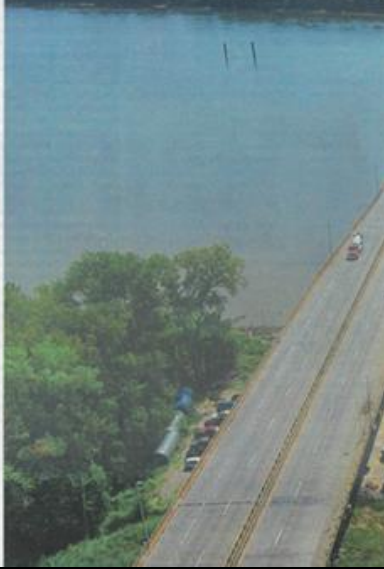
OPPORTUNITIES ABOUND

Projects in Bi-State Region Expand Construction Opportunities

By Julie Devine

The East West Gateway Council of Governments recently approved the 2025 Priority Projects List featuring the top freight infrastructure funding needs for the St. Louis region in eastern Missouri and southwestern Illinois. The 2025 list includes 27 projects that represent a total investment of more than \$8 billion. As of May 2024, more than \$500 million in projects on the list had been completed and nearly \$2.3 billion in additional projects were fully funded, with many of those already under construction or soon to be. "As we look ahead five to 10 years, we would see a level of investment that far exceeds the current progress," said Mary Lamin, who leads the St. Louis Regional Freightway, an enterprise of Bi-State Development. "During that window of time, work may be actively underway on more than \$5 billion in infrastructure projects. Those projects would specifically benefit the regional and national supply chain, not to mention supporting the bi-state area's developer-ready industrial real estate sites."

New Terminal for St. Louis Lambert International Airport
The largest project on the 2025 list is the new airport terminal in Missouri. Valued at \$3 billion, the project is partially funded. Currently, the airport uses two separate, unconnected terminals with 54 gates. Under the new plan, a single 130-foot-wide concourse covering 1.57 million square feet will feature 62 gates by 2032. Improvements in the new terminal include a better passenger experience, streamlined security checkpoints, and larger gates to accommodate modern airplanes. "This project is critical for the region not only to stay competitive for business growth opportunities, but to ensure we have a facility that will serve us well for the next four to five decades," said Rhonda Hamm-Nielsen, Airport Director. "Work will be split into numerous packages. The terminal will use Construction Manager at Risk delivery. Hamm-Nielsen said, while other projects progress with traditional design-bid-build delivery. As of October 2024, the new Airport Maintenance Facility was at 60 percent design. The West Diving Pool and new central utility plant are also contracted for design. Hamm-Nielsen expects construction contracts for those projects, as well as demolition of the vacant Missouri Air National Guard building, to go out for bid in 2025. "We anticipate there will be a lot of opportunity during the next seven to eight years for contractors to play a role in this project, and we are seeing a lot of minority firms seeking certifications in a variety of functions to be a part of the overall project in some way," she said.



The priority projects are identified by the St. Louis Regional Freightway's Freight Development Committee. On that committee are representatives from the Illinois Department of Transportation (IDOT), Missouri Department of Transportation (MoDOT), East-West

I-270 Improvements from I-70 in Missouri to Illinois Route 157
More than 25 million square feet of new

Other Recent Earned Media Coverage



Investment, advocacy & collaboration elevate STL region as a global freight hub

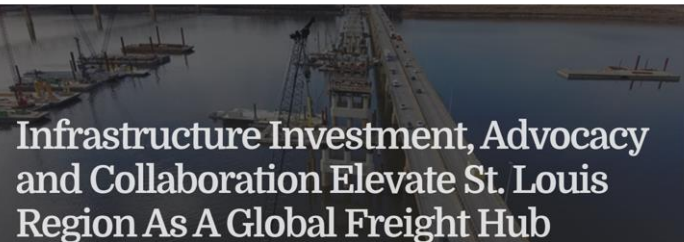
posted by AJOT | Jan 06 2025 at 01:30 PM

The St. Louis region strengthened its position as a national and global freight hub in 2024 with the advancement of significant regional infrastructure projects and the launch of several new initiatives. The St. Louis Regional Freightway compiled a summary of some of the most significant developments and milestones during the past year that enhanced the region's freight infrastructure, expanded its industrial site offerings or set the stage for workforce expansion to meet future needs.



Infrastructure Investment, Advocacy and Collaboration Elevate Region as Global Hub

Image Courtesy of Bi-State Development



Infrastructure Investment, Advocacy and Collaboration Elevate St. Louis Region As A Global Freight Hub



Infrastructure investment, advocacy, collaboration elevate St. Louis region as a global freight hub

By Editor | January 3, 2025 | 0



Home > Discussion > Transportation Drove Region's Competitiveness in 2024, STL Regional Freightway Reports

Transportation Drove Region's Competitiveness in 2024, STL Regional Freightway Reports

Posted on 01/07/2025



Why St. Louis is America's Next Big Hub for Industry, Tech, and Talent

JANUARY 10, 2025 BY STAFF REPORTER

What city is home to the Best Coffee Chain in the United States, a worldwide hub for agtech and Geospatial Intelligence, has a robust bioscience innovation ecosystem, and is one of the most affordable places to live in the country? If you guessed St. Louis, you are correct.



St. Louis Regional Freightway Advances the Bi-State Region

by Denise Wilmsteyer — February 10, 2025 in NewsWatch



NWF Releases Waterways Benefits Study

DECEMBER 13, 2024 • BY SHELLEY BYRNE

... The rivers have made it more economical for farmers to get their goods to market, as well, Ferrell said, adding that the reach of the Mississippi near St. Louis is now known as the "ag coast of America." ...

Visit TheFreightway.com



Why the St. Louis Region for Site Selection?

Answers the questions:

Why this region is a global freight hub!

Mark Your Calendar

- FreightWeekSTL 2025: June 2- 6, 2025
- Freight and transportation experts as well as panelists from around the country come together to share ideas and collaborate on the forward movement of America's growing freight industry.
- Hybrid format with both virtual and in-person opportunities

Contact us to added to our email distribution list:

Mary C. Lamie, P.E. | Executive Vice President of Multi Modal Enterprises

PH: 314-982-1562

MCLamie@TheFreightway.com



Thank you!