

# CITY OF MANCHESTER

---

*Capital, Stormwater, & LPA Federal Aid  
Infrastructure Improvement Projects*

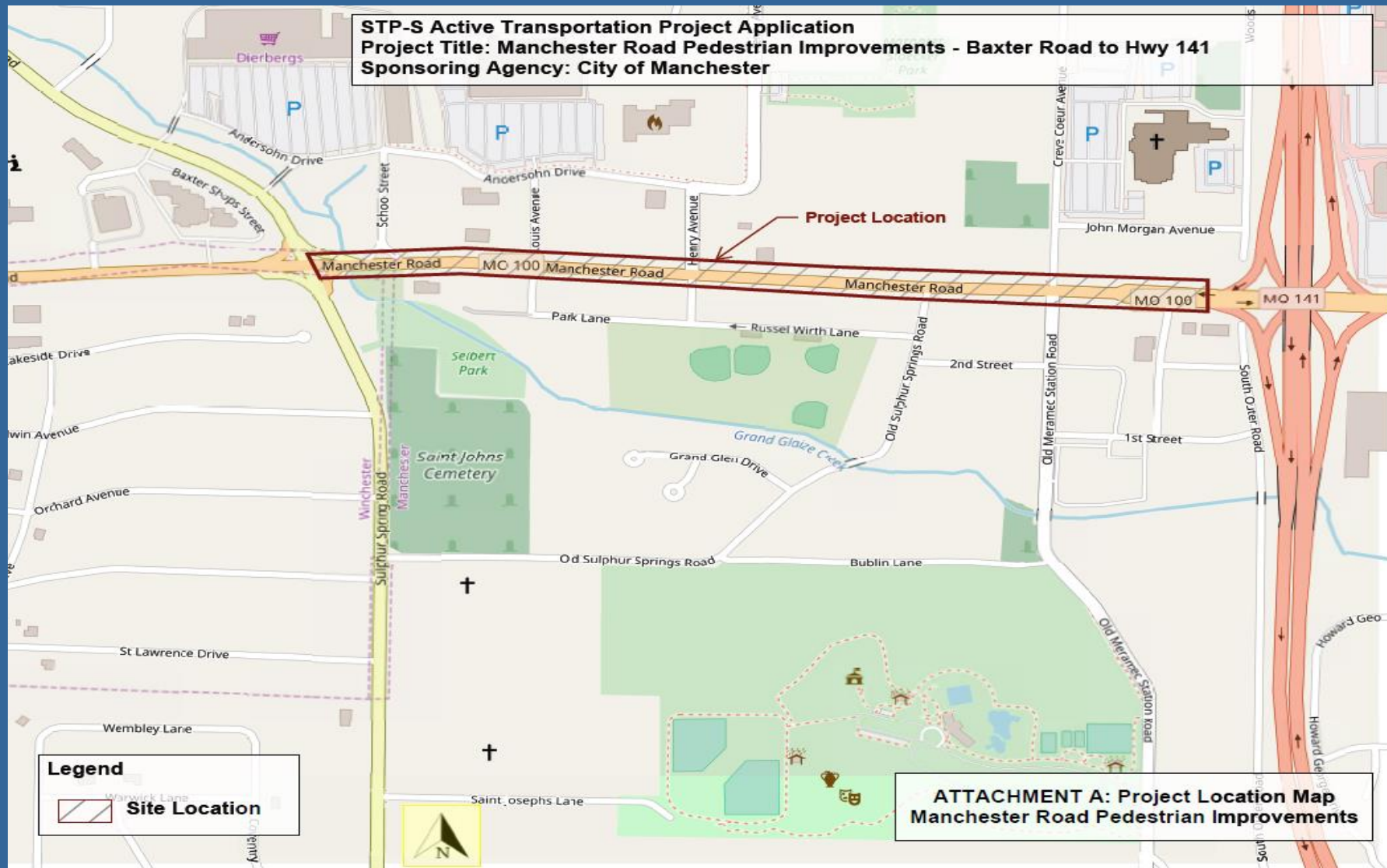
# MANCHESTER INFRASTRUCTURE IMPROVEMENT PROJECTS

FOR MORE INFO VISIT TO THE FOLLOWING

<http://www.manchestermo.gov/1050/Infrastructure-Improvement-Projects>



# MANCHESTER ROAD PEDESTRIAN IMPROVEMENT PROJECT STP-5504(604)



# PROJECT SUMMARY

- Fully upgrade the pedestrian walking facilities along Manchester Road from Missouri Highway Hwy 141 to Baxter Rd on the north side of the road, and Hwy 141 to Sulphur Springs Rd on the south side.
- 5-6' ADA compliant sidewalks and curb ramps and upgraded entrance approaches.
- Five Metro Bus stops within the project area will receive upgraded ADA concrete landing pads and, where suitable, other improvements.
- Installation of a prefabricated steel truss pedestrian bridge will be constructed to span over Grand Glaize Creek to connect to the Baxter Road pedestrian facility.
- High visibility continental crosswalks will be installed at all intersections and high-volume entrances within the corridor.
- Approximately 28 parcels will be impacted with this project.



A few short, but non-contiguous sections of sidewalk/asphalt shoulder, do exist along the north side of Manchester Road. These sections are non-ADA compliant and collectively do not establish a sidewalk system.



Approximate location of the 8' wide Pedestrian Bridge over Grand Glaize Creek.



To facilitate pedestrian safety and motorist awareness, high visibility continental crosswalks will be installed at all intersections (including across Manchester Road) and high volume entrances within the corridor.



To facilitate pedestrian safety and motorist awareness, high visibility continental crosswalks will be installed at all intersections (including across Manchester Road) and high volume entrances within the corridor.



The existing sidewalk, on the South side of Manchester, does not maintain a uniform grade and has numerous vertical changes in level. These deficiencies will be corrected with a new 6' concrete sidewalk from Baxter Rd. to Hwy 141. Utility boxes will be adjusted as needed.



The existing sidewalk, on the South side of Manchester, does not maintain a uniform grade, nor a defined path, and has numerous vertical changes in level. These deficiencies will be corrected with a new 6' concrete sidewalk from Baxter Rd. to Hwy 141. ADA-compliant ramps and entrance approaches will be added as required.



Existing sidewalk will be replaced and transitions will be made flush and free of changes in level.

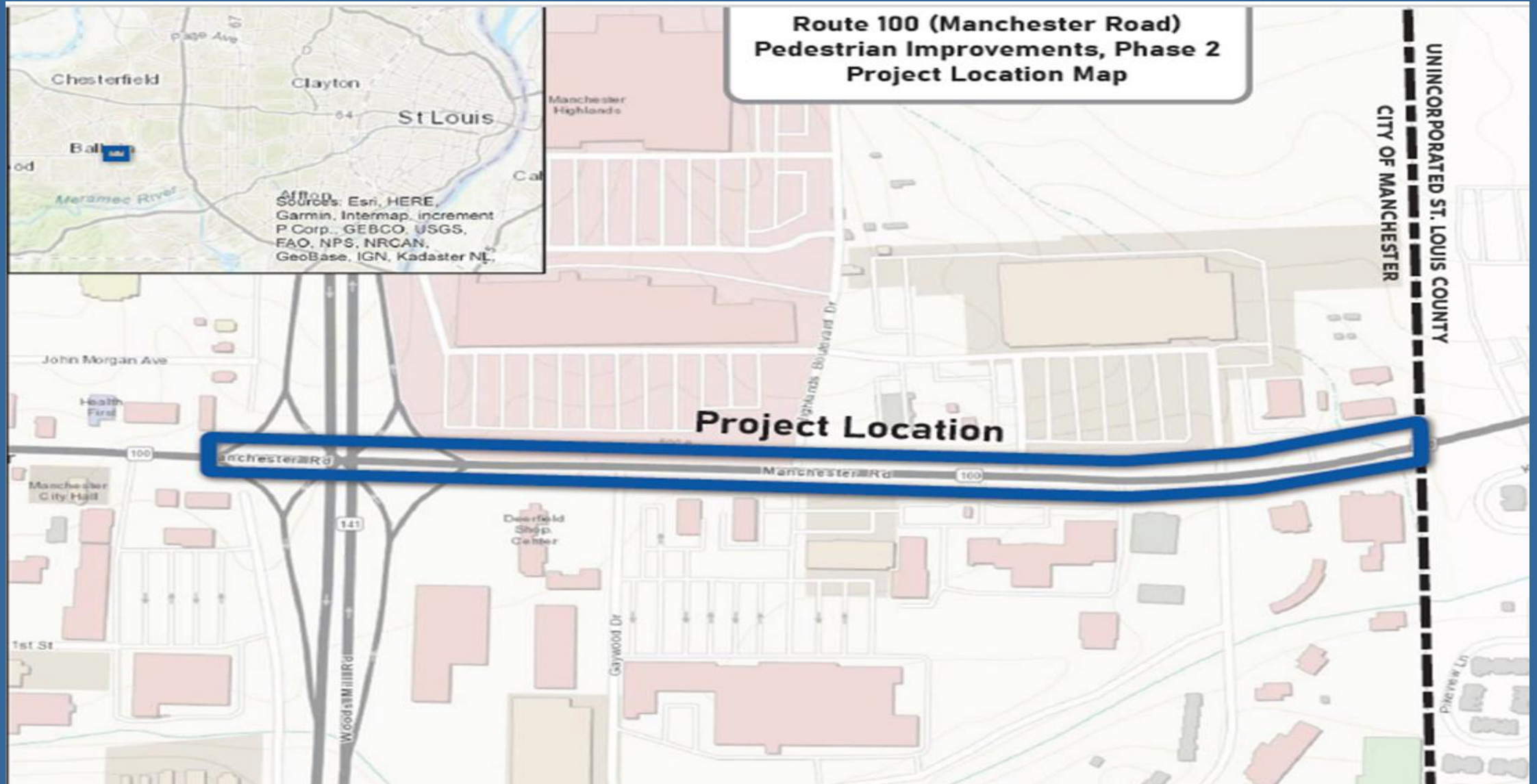


The existing bus stop along Metro Route 57 (Stop ID# 5185) will be upgrade including a new ADA compliant loading/unloading pad, a bus shelter, and bench. The remaining 4 bus stops, within the project limits, will receive upgraded ADA concrete landing pads and benches (where suitable),

# TIMELINE

- PE/Planning/Environmental Studies 2021-2022
- Right of Way 2022-2024
- Bid package to go out Spring 2025 for Construction
- Construction Engineering 2025
- Construction Implementation 2025

# MANCHESTER II ROAD PEDESTRIAN IMPROVEMENT PROJECT STP-5504(604)





**Curb ramps and sidewalks will be replaced under Hwy 141.  
Pedestrian signal heads and high-visibility crosswalks will be added.**



**Pedestrian cut-throughs will be added to the raised median islands on the north side of Manchester Road along with Pedestrian signal heads and high-visibility crosswalks to facilitate the new pedestrian paths.**



**Curb ramps will be replaced and entrances/intersections will have high-visibility crosswalks added.**



**Pedestrian cut-throughs will be added to the raised median islands on the north side of Manchester Road along with Pedestrian signal heads and high-visibility crosswalks to facilitate the new pedestrian paths.**



**6' sidewalks will be added to the north side of Manchester Road  
Looking east towards Hwy 141**



**A bus landing pad will be added along the north side of Manchester Road  
(current stop does not have a landing pad)  
Looking east towards Highlands Blvd Dr.**



**Existing non-contiguous sidewalks on the south side of Manchester Road will be replaced with 6' sidewalks. ADA compliant connections to existing bus stop will be added**



**6' sidewalks will be added to the south side of Manchester Road  
Looking west towards City Limit**

# PROJECT SUMMARY

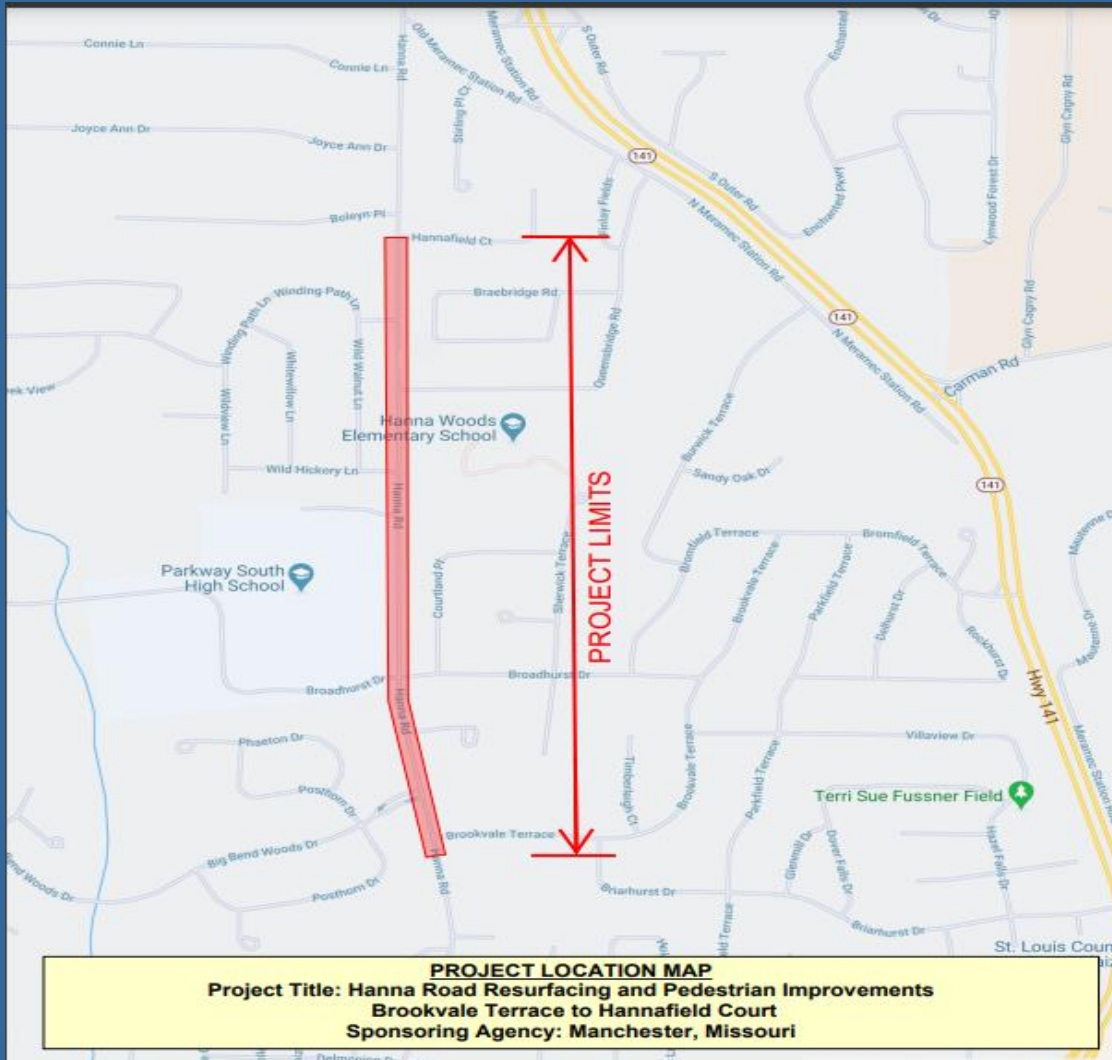
- This project is a continuation of the Manchester Road Phase I Improvements and will fill in sections of sidewalk where there are gaps and provide or improve ADA accessibility
- Pedestrian connection goals along Manchester Road east of Hwy 141 to the Manchester city limits (between Enchanted Parkway and Knollhaven Lane).
- Various utility adjustments and modifications may be required in conjunction with the construction of the sidewalk, retaining walls, and traffic signal modifications.
- Re-stripping of the continental crosswalks, concrete sidewalk slab replacements as required.
- There are 3 MetroBus stops within the project limits which will be upgraded as they are not currently connected to the existing sidewalk network

# TIMELINE

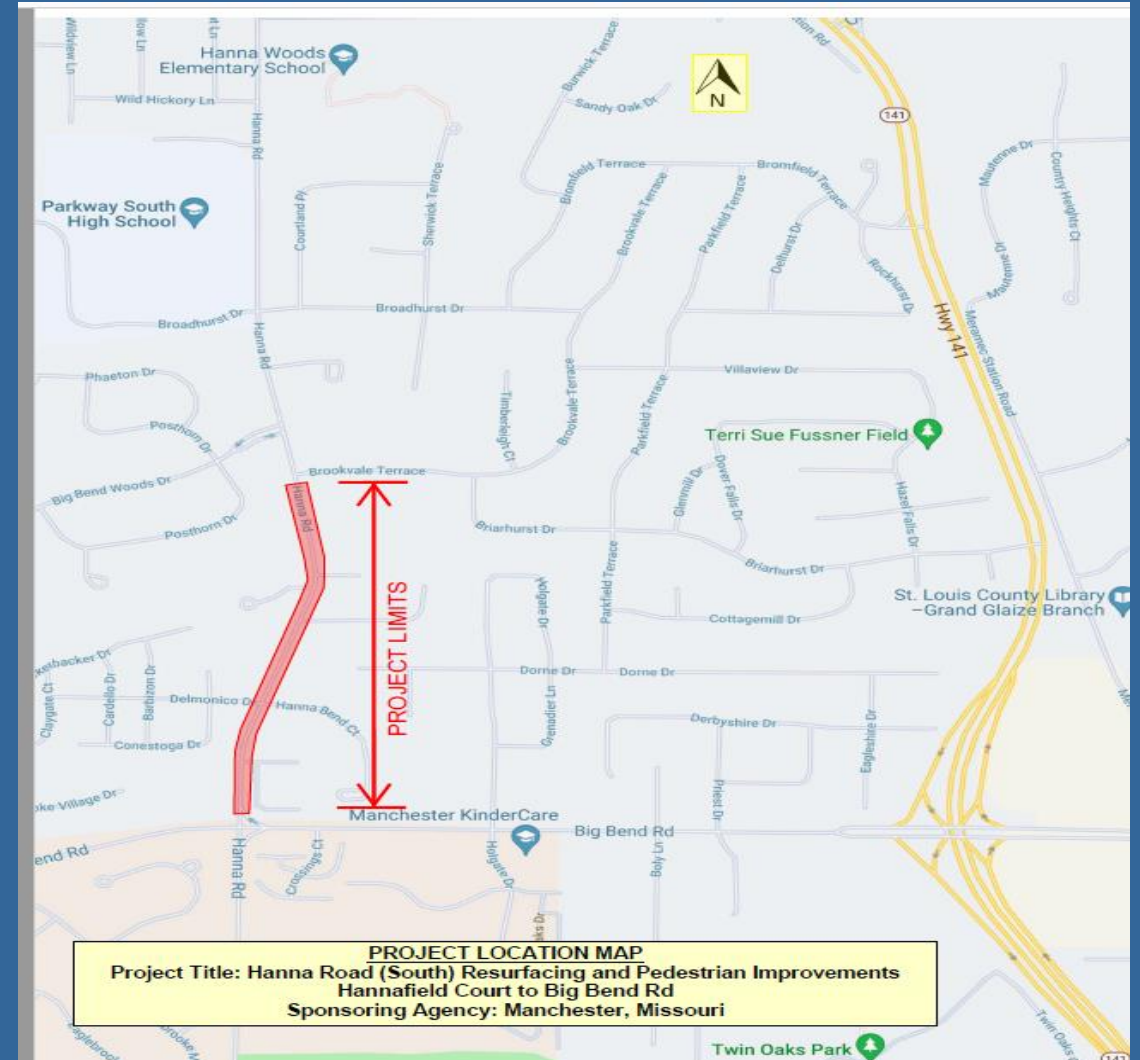
- PE/Planning/Environmental Studies 2025-2026
- Right of Way 2025-2026
- Construction Engineering 2027-2028
- Construction Implementation 2027-2028

# HANNA ROAD & PEDESTRIAN IMPROVEMENT PROJECT STP-5504(605)

PHASE I

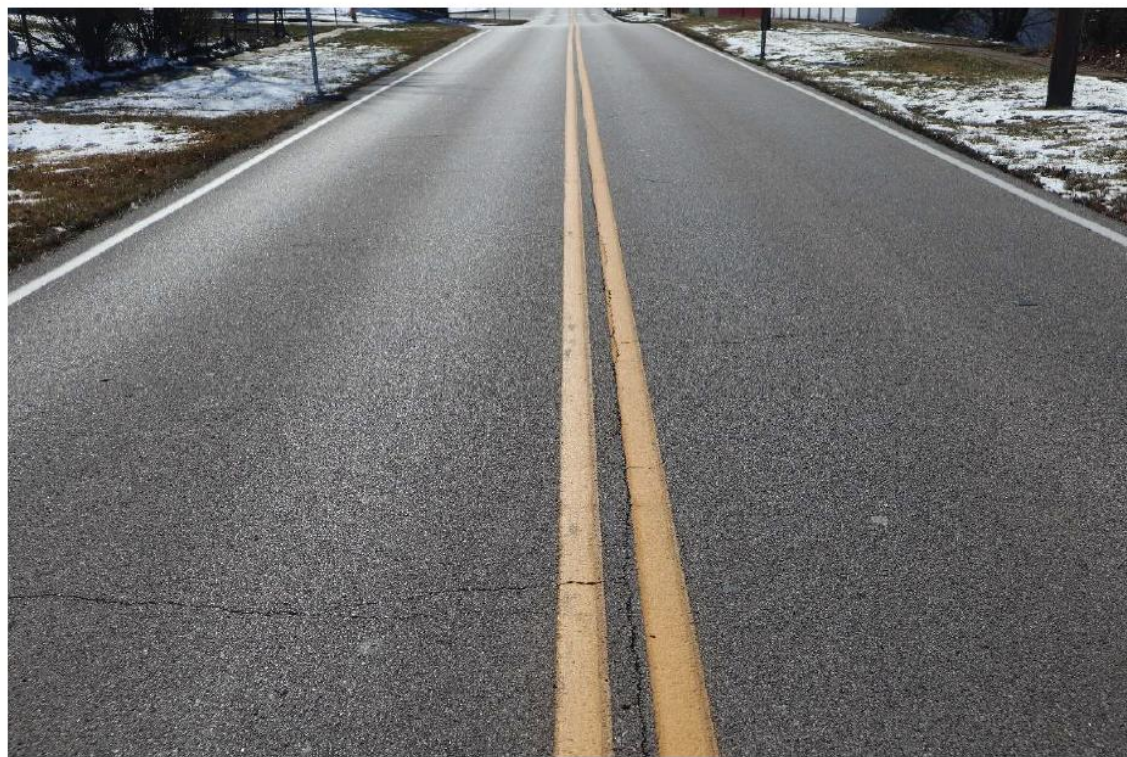


PHASE II



# HANNA RD PHASE I PROJECT SUMMARY

- Road Microsurface
- Curb Ramp Replacements
- Reconstruction of existing 4' sidewalks with new 5' (6' when at back of curb) sidewalks (both sides of the road)
- Addition of 5' sidewalks to sections of Hanna Road which do not currently have sidewalks
- New curb and gutter and enclosed drainage (where feasible) for existing roadway sections with open drainage
- High Visibility Continental Crosswalks at all intersections and major entrances
- Rectangular Rapid Flashing Beacon at the Mid-block crossing at Hanna Woods Elementary School
- Dynamic Speed Feedback Signs at each end of project limits
- Preventative Safety Countermeasures at the 4-way stop of Hanna Road and Broadhurst Drive
- Side streets and entrance approaches replaced or milled/overlaid as required
- Pavement Striping for Safety and Visibility
- 10-15 Parcels may be impacted with sidewalk reconstruction.
- Volume reducing practices, such as amended soils will be utilized where feasible, between the roadway curb and new 5' sidewalk, as a Best Management Practice (BMP).



**Existing Hanna Road pavement  
(to be overlaid with an Ultrathin Bonded Wearing Surface)**



**A Rectangular Rapid Flashing Beacon will be added at the mid-block crossing at  
Hanna Woods Elementary**



**Curb and Gutter and enclosed drainage will be added (where feasible)**



Existing 4' sidewalks will be replaced with new 5' sidewalks



Existing 4' sidewalks will be replaced with new 5' sidewalks



New 5' sidewalks will be added to areas within the corridor without sidewalks

# HANNA RD PHASE II PROJECT SUMMARY

- **Mill and Overlay**
- **Curb Ramp Replacements (non-compliant ramps) and New Curb Ramps (where none exist)**
- **Reconstruction of existing 4' sidewalks with new 5' (6' when at back of curb) sidewalks (both sides of the road)**
- **Addition of 5' sidewalks to sections of Hanna Road which do not currently have sidewalks**
- **New curb, gutter & enclosed drainage (where feasible) for certain existing roadway sections with open drainage**
- **High Visibility Continental Crosswalks at all intersections, side streets, and major entrances.**
- **Dynamic Speed Feedback Signs near Big Bend Road**
- **Preventative Safety Countermeasures at the 4-way stop of Hanna Road and Delmonico Dr/Hanna Bend Ct.**
- **Side streets and entrance approaches replaced or milled/overlaid as required**
- **10 parcels may be impacted by sidewalk reconstruction.**
- **Pavement Striping for Safety and Visibility**



Existing Hanna Road pavement (to be milled and overlaid with an 2" Asphalt Surface)



Existing 4' sidewalks will be replaced with new 5' sidewalks (both sides of the road)



Curb ramps will added (where they do not currently exist). Non-complaint curb ramps will be replaced



New 5' or 6' sidewalks will be added to areas within the corridor without sidewalks



**LED Stop signs and high visibility crosswalks will be added at along Hanna Road at the Delmonico Dr intersection**



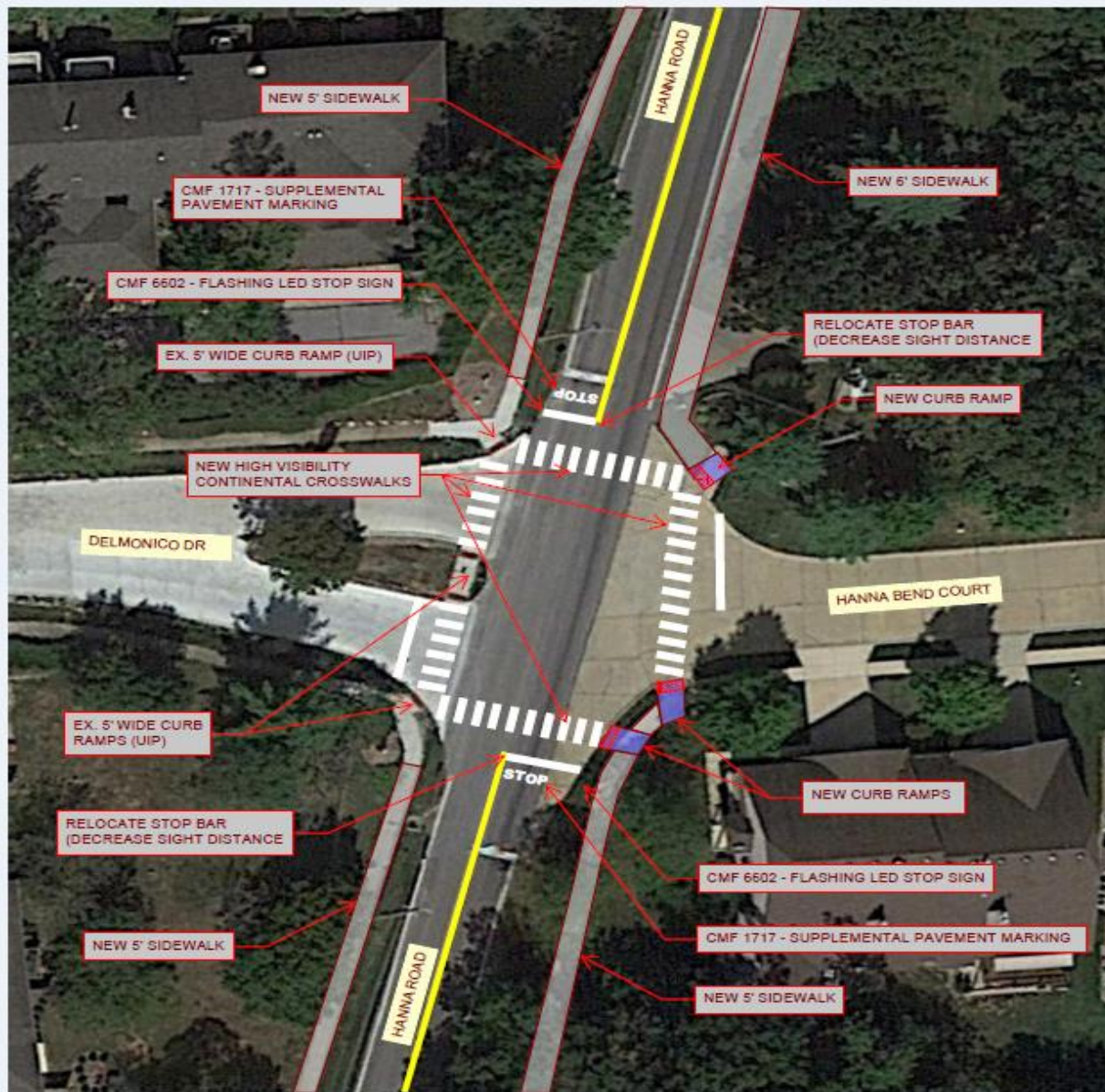
**Curb and Gutter and enclosed drainage will be added (where feasible)**



**Some sections of Hanna Road will need full depth pavement repair**



**Bridge exception for paving along Hanna Road**



**INTERSECTION IMPROVEMENTS - SAFETY COUNTERMEASURES (CMF)**  
**HANNA RD AND DELMONICO DR**  
 Project Title: Hanna Road (South) Resurfacing and Pedestrian Improvements

# TIMELINE

- PE/Planning/Environmental Studies - 2023-2025
- Right of Way - 2025-2026
- Construction Engineering - 2026
- Construction Implementation - 2026

# CARMAN RD PEDESTRIAN IMPROVEMENTS

- **Project limits: La Bonne Parkway to Dougherty Ferry Road**
- **Project Length: 1.3 Miles**
- **Project Scope: To fill gaps and upgrade the existing sidewalk network and upgrade Non-ADA compliant sidewalks on the north side and south side of the roadway.**
- **4' sidewalks to be replaced with 5'**
- **The mid-block crossing will have a high visibility continental crosswalk and solar powered rectangular rapid flashing beacon.**
- **Approximately 11 parcels may be impacted by sidewalk construction.**

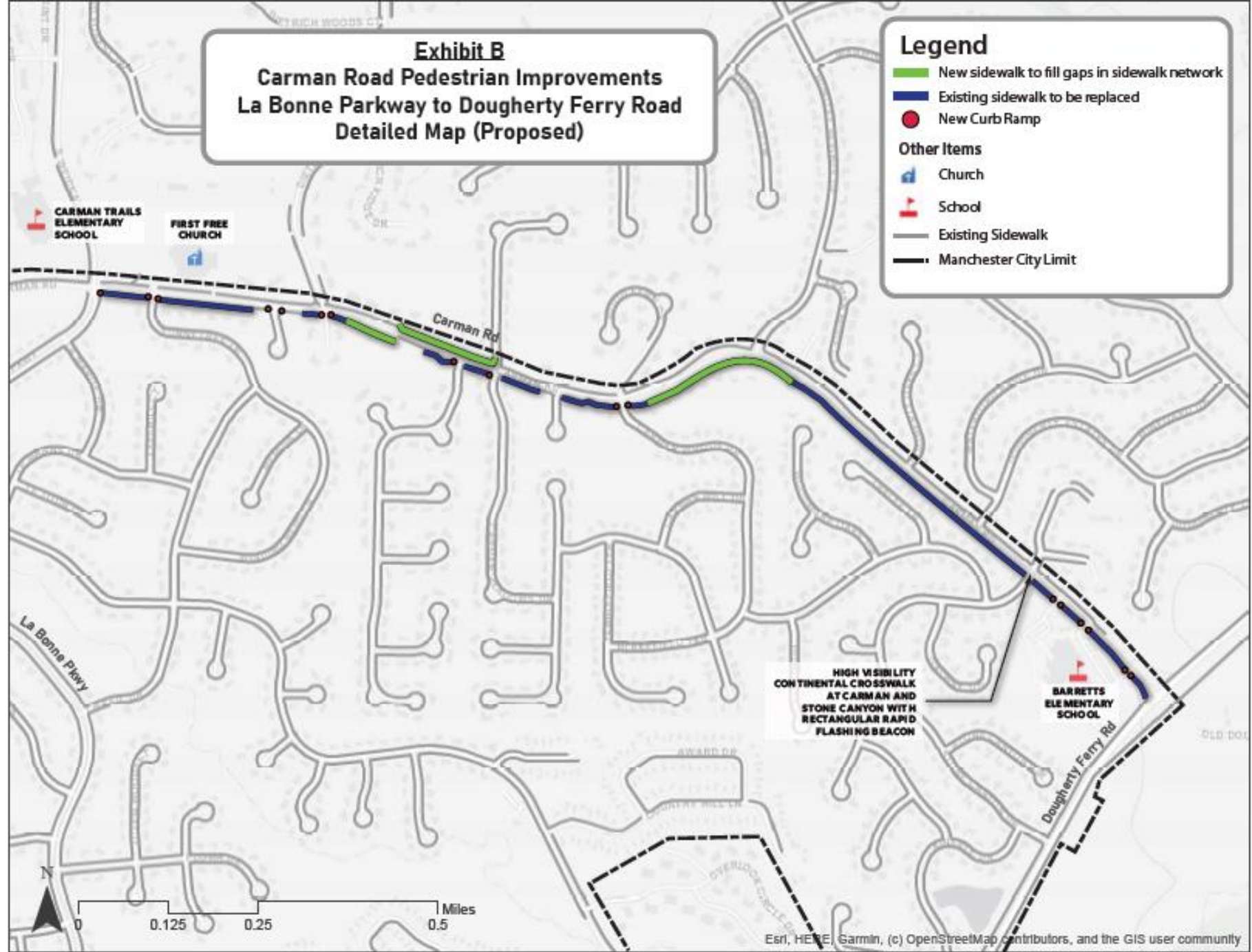
**Exhibit B**  
**Carman Road Pedestrian Improvements**  
**La Bonne Parkway to Dougherty Ferry Road**  
**Detailed Map (Proposed)**

**Legend**

- New sidewalk to fill gaps in sidewalk network
- Existing sidewalk to be replaced
- New Curb Ramp

**Other Items**

- ✚ Church
- ✚ School
- Existing Sidewalk
- - - Manchester City Limit





**Beginning of project – south side of Carman Road**



**Non-ADA complaint curb ramps (on the south side of Carman) will be replaced**



**1st gap in sidewalk network to be filled  
South side of Carman Road east of Carman View Court (looking west)**



**1st gap in sidewalk network to be filled  
South side of Carman Road east of Carman View Court (looking east)**



**2nd gap in sidewalk network to be filled  
North side of Carman Road west of Carman Meadows Dr (looking west)**



**2nd gap in sidewalk network to be filled  
North side of Carman Road west of Carman Meadows Dr (looking west)**



**Carman Road and Stone Canyon mid-block crossing  
A solar powered Rectangular Rapid Flashing Beacon and high visibility continental crosswalk will be installed.**



**Existing 4' wide sidewalks (on the south side of Carman) will be replaced**

# TIMELINE

PE/Planning/Environmental Studies: 2024-2026

Right-of-Way: 2025-2026

Construction Engineering: 2027

Construction Implantation: 2027

# UPCOMING CONCRETE STREET SLAB REPLACEMENT PROJECT 2025

- Approximately 10,466 Square Yards of selected concrete slab replacement
- 7" Thick Concrete Street with Rolled Curb
- Using Colloidal Silica - E5 Admixture - Internal Curing in concrete

# 2025 SIDEWALK ELEVATION CORRECTION PROJECT

- Mudjack approximately 2540 residential sidewalk slabs with proper grout mix to elevate slabs to eliminate trip hazards and standing water issues.
- This is a much cheaper fix than replacement.
- Construction to be begin March 2025.

# RECENT STORMWATER PROJECTS

## Creek Streambank Stabilization Projects

Channel regrading, replanting, decreasing bank heights, reduce stormwater velocities, prevent erosion, wall and rip-rap rock installation.

### King George/Mayfair Park Channel (2024)

-495 Lineal Feet .40 acres of area

### Hazel Falls Drive Channel (2022)

-330 Lineal Feet .85 acres of area

### Channel B Dinard (in Construction)

-264 Lineal Feet .43 acres of area

## Run-off, Flooding, Ponding Remediation

### Timberleigh/Brookvale Terrace (2023)

- Install 275' of new sewer pipe, 4 new inlets, & 2 manholes.

### Marie/Baxter Lane (2022)

-500 linear feet of new storm sewer in yards & street, 4 inlets, 2 manholes, & grading.

### Great Falls Court (2023)

-Construction of a drainage swale approximately 220 feet in length, and two terraced short retaining walls

# COUNTRYSTONE DRIVE CHANNEL STABILIZATION PROJECT

- **Approximately 495 linear feet of an existing drainage channel to be improved adjacent to the back yards of multiple City of Manchester residents. Approximately 0.85 acres will be utilized including re-graded and replanted to improve drainage, halt channel incision creating stormwater pollution, decrease bank heights, reduce stormwater flow velocities and prevent erosion to the on-site and neighboring properties while improving the riparian corridor along this channel and the resident's back yards.**
- **Installation and maintenance of all sediment and erosion control measures are in accordance with the Stormwater Pollution Prevention Plan (SWPPP) and St. Louis County standards.**

# UPCOMING STORMWATER PROJECTS IN DESIGN

- 920 Brookvale Terrace - Install 150' of new sewer pipe, 3 new inlets, & 2 new manholes.
- Glan Tai Stormwater - Install 1 double inlet & 2 trench drains the width of the road.
- Grenadier Lane – Install 5 new curb inlets, 3 new trench drains, and grading work.
- Country Stone Drive Channel Improvement Project – 133 Linear Feet and .15 acres
- Country Lane Woods Channels Improvements Projects – Three separate channels being completed in one package

# QUESTIONS?

Contact Manchester Public Works Department:

(636) 227-1385

[publicworks@manchestermo.gov](mailto:publicworks@manchestermo.gov)

Sign up to Receive Bid Notifications & RFQ's:

<http://www.manchestermo.gov/Bids.aspx>