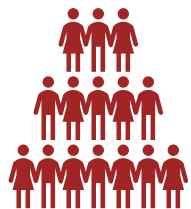


MoDOT ST. LOUIS TRANSPORTATION UPDATE

ST. LOUIS DISTRICT



2.5 Million



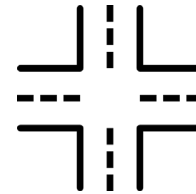
Roadways

1,677 centerline | 5,736 lane miles and 26% of all vehicle miles traveled



Bridges

1,111 non-major bridges
55 major bridges (> 1,000 feet)



Traffic Intersections

1070 locations



Highway Tunnel

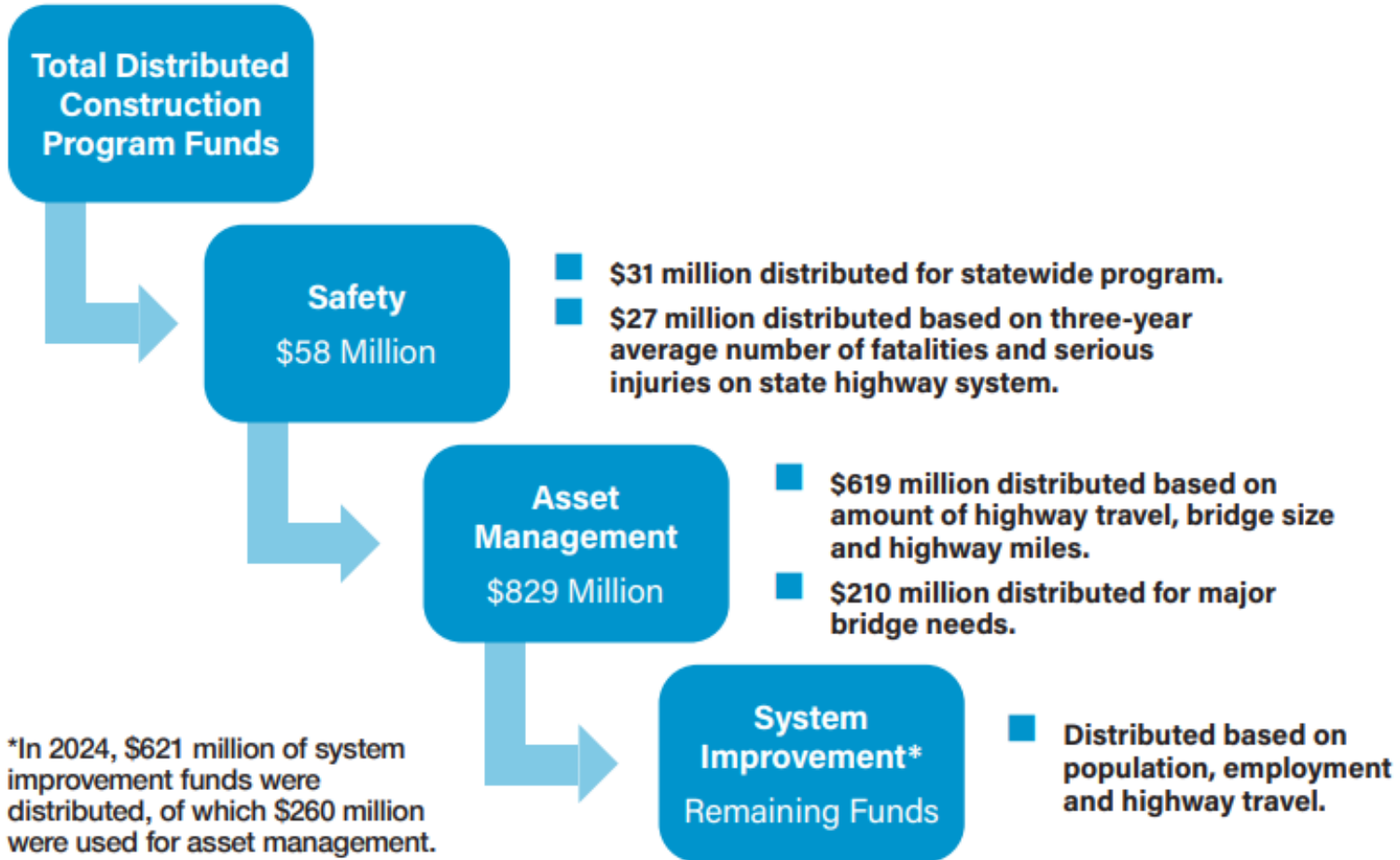
1420 feet, first in Missouri



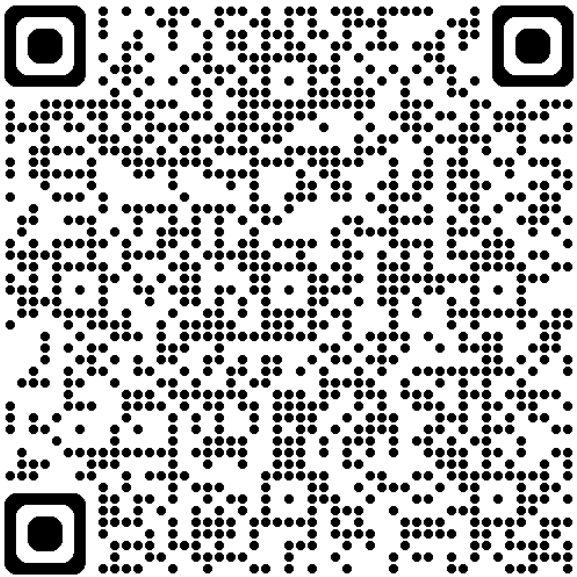
Lambert Int. Airport

15 Million passengers annual

MODOT DISTRIBUTION OF FUNDS



Citizen's Guide to Transportation Funding



2015-2024

4,099 projects

\$9.7 billion

- Focused on
 - Taking care of the system
 - Improving safety and reliability
 - Spurring economic growth

COMPLETED PROJECTS

2015-2024 | MoDOT District by County



2025-2029 STIP

- Largest program to date
 - **\$14.6 billion**
 - \$10.7 billion in road and bridge construction
- 1,400+ projects
- Asset management:
 - Nearly 34,000 miles of roads & 10,400 bridges
- Rural road investments



MoDOT's Program

– Large Projects By the Numbers

Larger Project \$ growth

User focus – Efficiency in improvements

Price of construction

Projects over \$25M

- 2025 STIP – 50 Projects
- 2024 STIP – 50 Projects
- 2023 STIP – 30 Projects
- 2022 STIP – 20 Projects



IMPROVE I-70



NOVEMBER 2024

Totals listed are STIP funds unless otherwise noted

Planned Capacity Improvements Blue Springs to Wentzville

- Under Construction - \$1.05 billion
- Funded Future Improvements - \$2.1 billion

Truck Parking Multiple Locations Statewide

Beginning in the fall of 2025, a corridor-wide project will evaluate and improve truck parking at multiple locations along I-70 statewide. \$30 million



Blue Springs to Odessa
18 miles
Average Daily Traffic: 51,800

STIP: \$28 million
General Revenue: \$297 million

Odessa to Boonville
61 miles
Average Daily Traffic: 31,000

STIP: \$16 million
General Revenue: \$650 million

Boonville to Rocheport
12 miles
Average Daily Traffic: 35,300

STIP: \$0 million
General Revenue: \$150 million

Rocheport to Columbia
13 miles
Average Daily Traffic: 47,500

STIP: \$41 million
General Revenue: \$450 million

Columbia to Kingdom City
20 miles
Average Daily Traffic: 39,800

STIP: \$123 million
General Revenue: \$297 million

UNDER CONTRACT

Kingdom City to Warrenton
47 miles
Average Daily Traffic: 39,300

STIP: \$17 million
General Revenue: \$492 million

High Hill Realignment
Average Daily Traffic: 41,100

STIP: \$5 million
General Revenue: \$70 million

Warrenton to Wentzville
19 miles
Average Daily Traffic: 61,200

STIP: \$200 million
General Revenue: \$434 million

UNDER CONTRACT

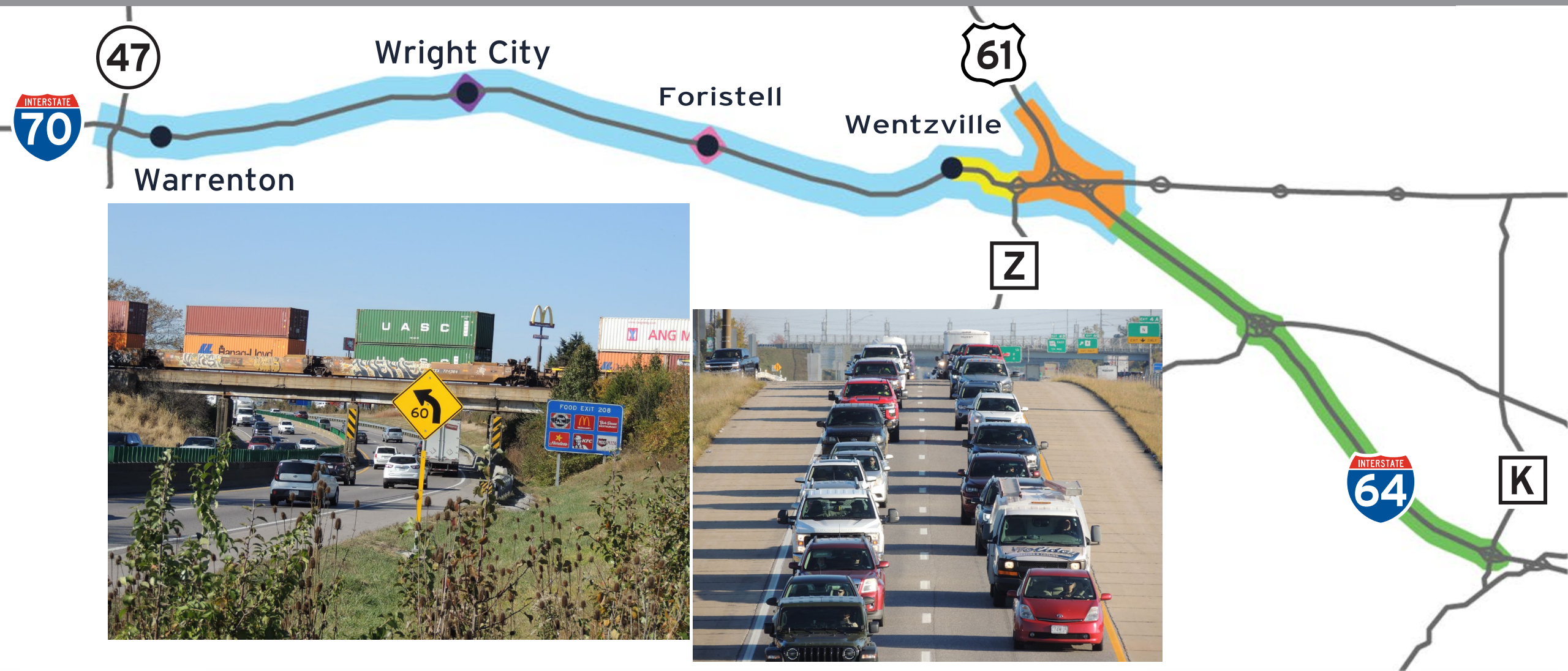
- Environmental near completion
- 1.1 million jobs depend on I-70
- Workforce development opportunities
- I-70 carries 100 million tons of freight

PLANNED CAPACITY IMPROVEMENTS:
STIP funded: \$430 million
General Revenue funded: \$2.84 billion

modot.org/improveI70



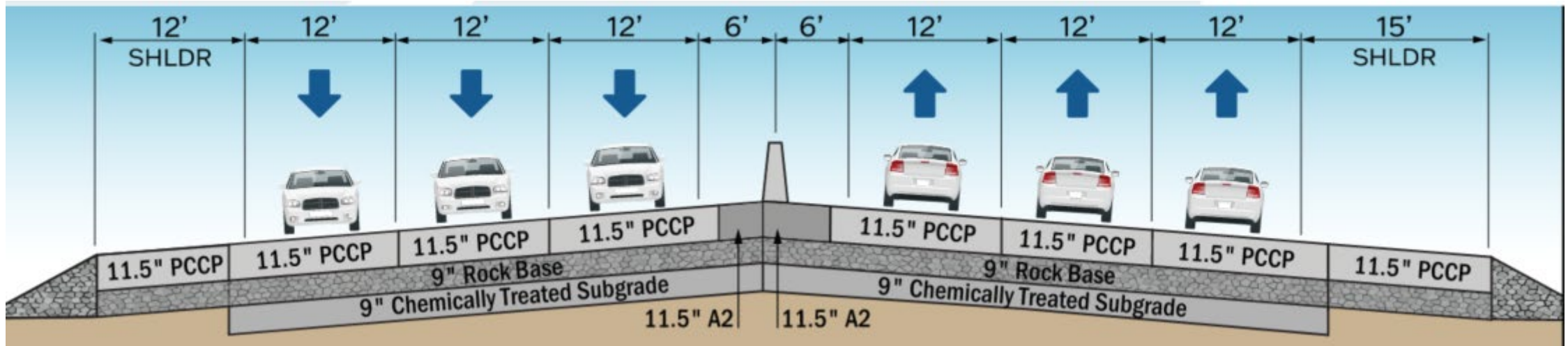
PROJECT LOCATION



IMPROVE 70 ALLIANCE PUBLIC ENGAGEMENT

- **WARRENTON:** Monday, Feb. 3, 2025, 5 p.m. to 7 p.m. at Warrenton High School

- **WENTZVILLE:** Thursday, Feb. 6, 2025, 5 p.m. to 7 p.m. at the Progress Park Recreation Center

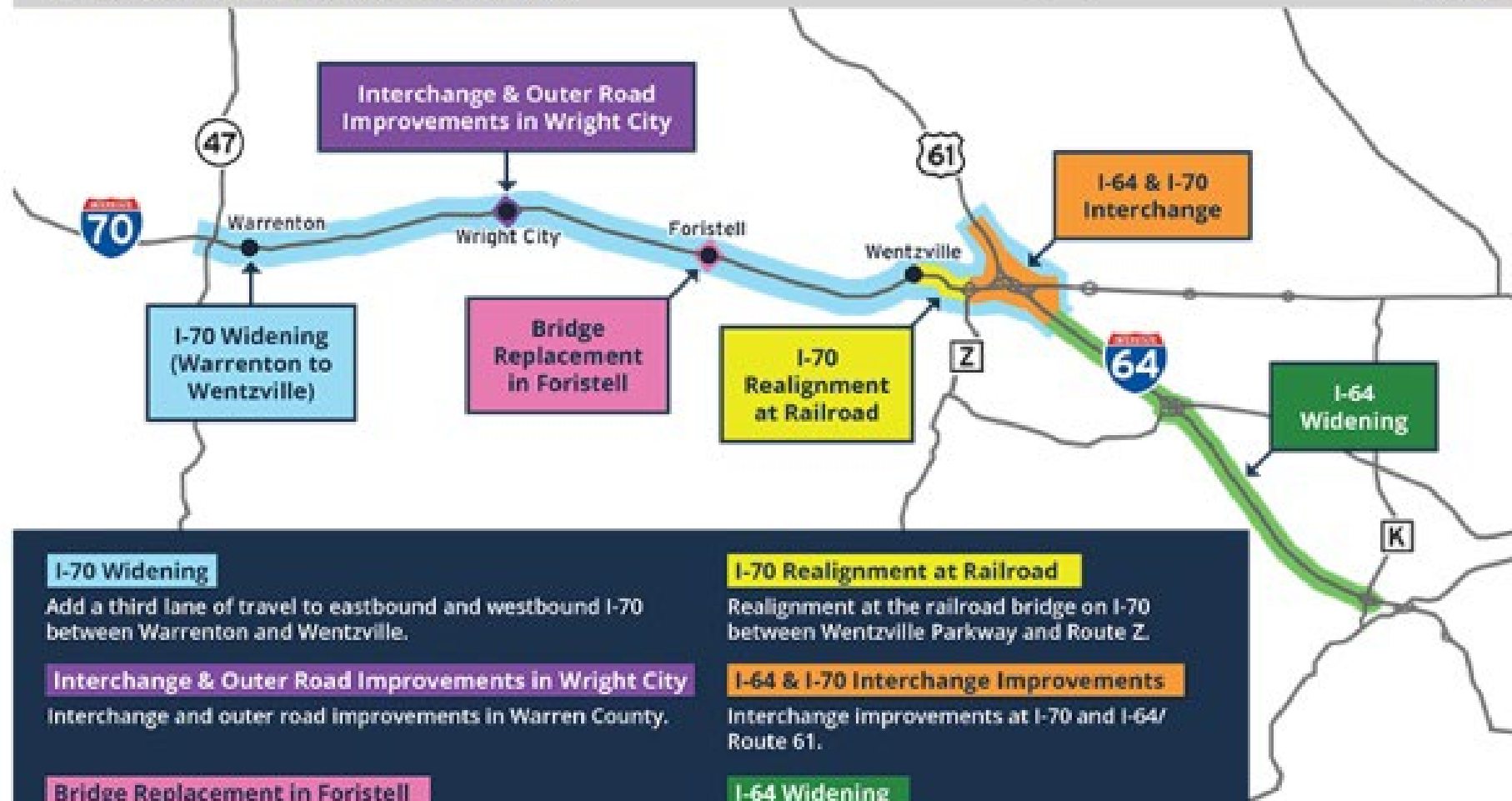


IMPROVE I-70

PROJECT OVERVIEW: WARRENTON TO WENTZVILLE



Project Details:
modot.org/improvei70/warrentonwentzville



I-70 Widening

Add a third lane of travel to eastbound and westbound I-70 between Warrenton and Wentzville.

Interchange & Outer Road Improvements in Wright City

Interchange and outer road improvements in Warren County.

Bridge Replacement in Foristell

Bridge replacement work in Foristell.

I-70 Realignment at Railroad

Realignment at the railroad bridge on I-70 between Wentzville Parkway and Route Z.

I-64 & I-70 Interchange Improvements

Interchange improvements at I-70 and I-64/Route 61.

I-64 Widening

Add a third lane of travel to eastbound and westbound I-64 between I-70 and Route K.

The Warrenton to Wentzville project includes the Improve I-70 and additional legislatively designated General Revenue funding. It also includes previously allocated funds in the state's program for other I-70 and I-64 projects for a total contract cost of \$600 million.

NOVEMBER 2024
improvei70.org



**I-70/I-64/US 61
Interchange
Looking West**



**Foristell (T/W)
Interchange
Looking North**

ST. LOUIS AREA PROJECTS



Construction: 100 projects (\$922 million)

Ongoing Major Projects:

- I-55 St. Louis City & County – Bridges
- I-270 at I-64 – Major Bridge Work
- I-55 Jefferson County – Expansion and Interchange Improvements
- Numerous Arterial Resurfacing and ADA Transition Plan Projects

I-55 CORRIDOR IMPROVEMENTS PROJECT – JEFFERSON COUNTY

I-55 from Route Z to US 67 interchange (12 miles)

- July 2023 - \$246 million contract awarded
- Early 2024 - work began
- December 2026 - expect completion
- An additional lane will be added within the 8-mile section
- 27 bridges that will be addressed





ST. LOUIS COUNTY

- I-270 Bridge Replacement at Conway Rd.
- Awarded in June 2023 for \$38.5 million
- Two-year construction project (2024-25)

ADA Transition Plan

Construction: 17 projects remaining (\$40 million)

Ongoing ADA Projects:

- Telegraph Rd (2 Projects)
- Lemay Ferry Rd (2 Projects)
- Route 21
- Watson Rd
- Manchester Rd
- Natural Bridge Rd (2 Projects)
- Completion Aug 2027



COMING SOON - PROJECTS

Upcoming Notable Projects:

- Route 47 - Franklin County
- I-64 Daniel Boone Bridge rehabilitation
- I-64 in City of St. Louis
- I-270 between 367 and Mississippi River
- I-44 Bridge Bundle in St. Louis and St. Louis City (32 bridges)
- Several bridge/resurfacing projects in the St. Louis Region



HIGH PRIORITY UNFUNDED NEEDS



Missouri

HIGH-PRIORITY UNFUNDED NEEDS



Oct. 2024



- I-64 Interchange Improvements, St. Louis City
- I-70 Interchange and Operational Improvements, St. Louis Co.
- Rte 30 (Gravois Rd) Safety and Interchange Improvements, St. Louis City
- Rte N Capacity Improvements, St. Charles Co.
- US 61 Safety Improvements, St. Charles Co.
- US 67 Safety Improvements, Jefferson Co.
- Rte 100 Safety Improvements, Franklin Co.

ST LOUIS DISTRICT OPERATIONS

Maintenance Operations Pavement and Bridge Work Plan Calendar Year 2023-2025

ST. LOUIS District

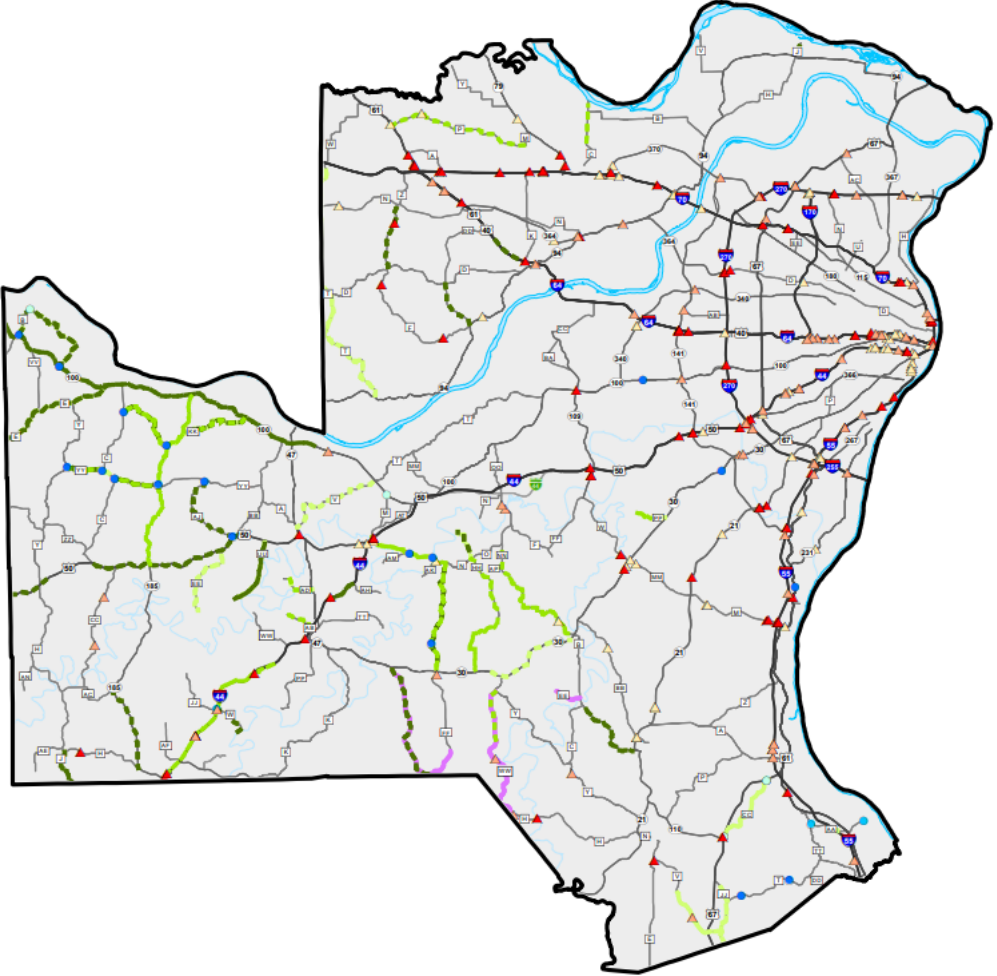
- ▲ 2023 Bridge Deck Sealing
- 2023 Pipe Replacement
- 2023 Pavement Repair
- 2023 Pavement Treatments
- ▲ 2024 Bridge Deck Sealing
- 2024 Pipe Replacement
- 2024 Pavement Repair
- 2024 Pavement Treatments
- ▲ 2025 Bridge Deck Sealing
- 2025 Pipe Replacement
- 2025 Pavement Repair
- 2025 Pavement Treatments

SFY 2022 Expenditures on all Transportation System Operations

Roadway:	\$27,800,000
Utilities and Tools:	\$15,700,000
Roadside:	\$5,100,000
Winter:	\$7,400,000
Incident Management:	\$1,000,000
Bridge:	\$2,700,000
Other ¹ :	\$2,000,000

¹ Includes insurance for general liability, vehicle liability and workers compensation.

*Note: These expenditures represent Labor, Equipment & Materials.



Buckle Up Phone Down

It is the Law in Missouri



Area Engineers

To ensure MoDOT's mission of exceptional customer service, these engineers have been designated to be MoDOT's local connection within the communities they serve.

Andy Tuerck, P.E.

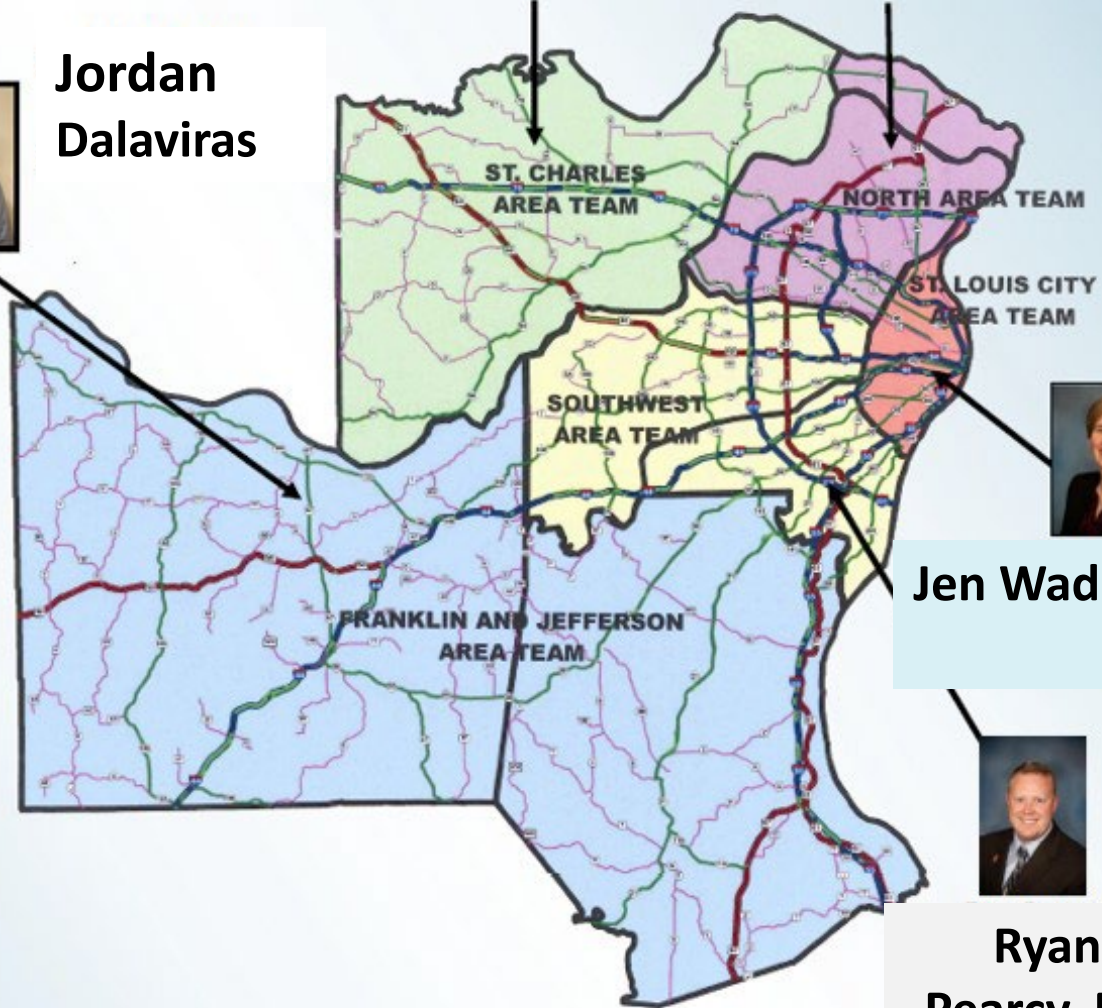


**Tabitha
Locke, P.E.**

ST. LOUIS AREA ENGINEERS



**Jordan
Dalaviras**



Jen Wade, P.E.



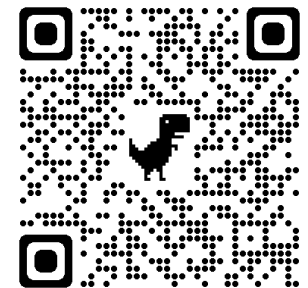
**Ryan
Percy, P.E.**





MoDOT St. Louis

- 1-888-ASK-MoDOT or 314-275-1500
- https://www.x.com/MoDOT_StLouis





Disadvantaged Business Enterprise (DBE) Program Certification

**Missouri Department of Transportation – St. Louis District
SITE Expo 2025**



Overview

- **DBE Program Purpose**
- **DBE Certification Requirements**
 - Business
 - Owners
 - **Personal Net Worth**
 - Ownership
 - Control
- **DBE Application Form Tips**
- **Where to Apply**
- **Certification Timeline**
- **Certification & Bidding Resources**

DBE Program: Purpose



- Ensure nondiscrimination in award and administration of USDOT assisted contracts;
- Create a level playing field for DBE's to compete fairly for federal-aid contracts with the inclusion of all classes;
- Ensure the Department's DBE program is narrowly tailored and in accordance with applicable law;
- Ensure only firms that fully meet eligibility standards participate as DBE's;
- Assist the development of firms to successfully compete in the marketplace outside of the DBE program.

DBE Certification Requirements - Business



- For profit business
- Small Business standards
 - Business 3-year Average Gross Receipts (AGR) cannot exceed \$30.72M – [adjusts annually](#)
 - Individual NAICS code caps based on 5-year Average Gross Receipts (AGR), varies based on work type. See [SBA Size Standards](#).
 - Gross receipts for any affiliates are included in both calculations

DBE Certification Requirements – Owners



- Majority (51%) owned & controlled by socially & economically disadvantaged owners.
- U.S. Citizens or lawfully admitted permanent residents
- Socially disadvantaged groups:
 - Women
 - Black Americans
 - Hispanic Americans
 - Native Americans
 - Asian-Pacific Americans
 - Subcontinent Asian Americans
- Economically disadvantaged:
 - Personal Net Worth less than \$2.047M (excluding ownership interest in applicant firm, primary residence & retirement assets).

DBE Certification Requirements: Personal Net Worth (PNW) - Assets



Assets	What is it?	Exclusions
Cash & Cash Eq.	Checking/Savings accounts, CDs, etc.	None
Investment Accts & Ind. Securities	Brokerage & Custodial Accts, stocks, bonds	Retirement; stocks/bonds of applicant business
Real Estate	Primary Residence, Vacation Home, Rental, Land, etc.	Primary Residence
Personal Property & Other Assets	Vehicles, Household Property, artwork, jewelry, collectibles	None
Ownership in Other Businesses	Ownership in Other Businesses	Applicant Firm
Life Insurance	Life Insurance – Cash Value	Term Life Insurance
Amounts Owed to You	Loans to others	None
Assets Held in Trust	Assets Held in Trust	None
Assets Transferred	\$20K+ in assets transferred in previous 2 years to relations	None



DBE Certification Requirements: Personal Net Worth (PNW) - **Liabilities**

Liabilities	What is it?	Exclusions
Mortgages on Real Estate	Real Estate Mortgage Balance	Primary Residence Mortgage
Loans on Life Insurance	Life Insurance Loans	None
Other Liabilities	Loans, unpaid taxes, anything else owed	None

PNW Calculation:
Assets – Liabilities = Personal Net Worth

PNW Cap: \$2.047M

DBE Certification Requirements: Ownership



- Own at least 51% of business.
- Investment must be: purchase, capital contribution, or gift at fair value
 - Unconditional & at full risk of loss
 - Significant outlay of owner's own money
 - May be debt financed (loan) only if 15% of total value of investment has been paid at time of application.
- Gifts can only count as an investment IF:
 - The giftor is or becomes immediately uninvolved with the firm in any capacity and in any other business that contracts with the firm other than as a lessor or provider of standard support services.
- Investments ARE NOT:
 - Time, labor, or services
 - The firm's purchases or sales of property
 - Someone else's purchases/capital contributions

DBE Certification Requirements: Control



- Firm must have operations in the business it is seeking certification in.
- The socially & economically disadvantaged owner (SEDO) as final decision maker.
- Expertise of SEDO
- SEDO makes independent decisions
- Delegation permitted – power to revoke
- Non-SED participant limits
- Independent Business

DBE Certification Application Form Tips



- Submit ALL documentation on application checklist as applicable.
- Select suitable NAICS codes for your type of business
 - Resources: [NAICS & SIC Identification Tools | NAICS Association & North American Industry Classification System \(NAICS\) U.S. Census Bureau](#)
- Documentation showing initial contribution
- Current & accurate equipment list with corresponding titles, insurance, & USDOT numbers
- Complete, signed tax returns.
- Completely fill out the PNW & include supporting documents
- Submit document in PDF format, not photos

DBE/ACDBE Certification: Where to Apply



- May apply with any of the following for DBE certification:
 - Missouri Department of Transportation (MoDOT)
 - City of St. Louis/Lambert Airport
 - Bi-State Development
 - City of Kansas City, Missouri
 - Kansas City Area Transportation Authority (KCATA)

- If applying for M/WBE certification, consider applying with an agency that can process both certifications.

- Must apply with one of the following for ACDBE certification:
 - City of St. Louis/Lambert Airport
 - City of Kansas City, Missouri

DBE Certification: Timeline



- 90 days to process application after all forms and supporting documents submitted
- On-Site visit conducted with applicant firm at their place of business or virtually during application review. Applicant must provide consent to record on-site.
- 90 day processing time may be extended for a period of an additional 30 days – applicant notified with reasoning.

DBE Certification Resources



Small Business Development Centers

[Small Business Development Centers \(SBDC\) | U.S. Small Business Administration \(sba.gov\)](https://www.sba.gov/local-assistance/resource-partners/small-business-development-centers-sbdc)

<https://www.sba.gov/local-assistance/resource-partners/small-business-development-centers-sbdc>

Missouri APEX Accelerator

[Missouri APEX Accelerator | MU Extension](https://extension.missouri.edu/programs/apex-accelerator)

<https://extension.missouri.edu/programs/apex-accelerator>

Missouri Minority Business Development Agency

[MBDA Programs | Minority Business Development Agency](https://www.mbda.gov/mbda-programs)

<https://www.mbda.gov/mbda-programs>

Resources for DBE Firms



- DBE Supportive Services provided by Bellewether Ltd.
 - Entrepreneurship Training
 - Advanced Contractor Training
 - Technical Assistance
 - Business Coaching
 - Seminars
 - Networking Events
- Monthly Lunch & Learns hosted by MoDOT's External Civil Rights Division
- Mentor-Protégé Program

Disadvantaged Business Enterprise: How to Get Started



With MoDOT

The Disadvantaged Business Enterprise program might be the key to your business growth!

Would your firm like to take part in federally funded transportation projects? MoDOT's Business Development & Compliance Office can help you find out if you qualify. Many federally funded projects require that a certain amount of work be awarded to historically under-represented social and economic groups. Contractors must make a good-faith effort to meet those goals with firms that are DBE certified by MoDOT.

Who qualifies for the Disadvantaged Business Enterprise program?

The minimum requirements for certification in the DBE program are:

- The for-profit business must be at least 51 percent owned and controlled by a socially and economically disadvantaged individual(s)* who has a personal net worth of less than \$2.04 million.
- The business owner must be a U.S. citizen or lawfully admitted permanent resident of the United States.
- The firm must meet the Small Business Administration's size standard and not exceed \$30.72 million in gross annual receipts.

What's the advantage of being DBE certified?

Certification gives construction contracting firms owned by individual(s) from historically under-represented groups a chance to earn work on certain federally funded MoDOT projects.

How do I become certified?

MoDOT will review your completed application and other required documentation such as ownership, control and financial and managerial records to determine if your firm can be certified. An on-site review is also required.

If I'm DBE certified, does that guarantee I'll be awarded MoDOT contracts?

No, DBE status is not a guarantee of work. The program does assure certified firms a fair opportunity to compete for work. MoDOT lists the contact information for DBE certified firms on our web site, www.modot.org. All other marketing efforts are the firms' responsibility.

How can I get an application or more information?

An application can be obtained:

- On the website at www.modot.org
 - Click on Program Tab
 - Go to Business Development & Compliance
 - Click on DBE Program



* Those individual(s) presumed to be socially and economically disadvantaged by the federal government ~~include~~: Black Americans, Hispanic Americans, Asian-Indian Americans, Asian-Pacific Americans, Subcontinent Asian Americans, Native Americans

DBE Brief



MoDOT Business Development & Compliance Office
DBE Supportive Services
Mentor-Protégé Program
1617 Missouri Boulevard
Jefferson City, MO 65102

DBE Contacts
Need more info?
These Individuals can help.

Missouri Department of Transportation DBE Mentor-Protégé Program

MoDOT's Mentor-Protégé Program provides advice, assistance, and training to Disadvantaged Business Enterprises to improve a firm's management and operating skills.

The Mentor-Protégé Program furthers the development of Disadvantaged Business Enterprises including, but not limited to, assisting them to move into non-traditional areas of work and/or compete in the marketplace outside the DBE Program, through training and assistance from other firms (Code of Federal Regulations (CFR) Part 26, Appendix D).

The Mentor-Protégé Program has dual goals of providing additional methods of assistance to DBE firms (resulting in heightened capacity and availability), as well as assistance to prime contractors in obtaining DBE participation (and meeting DBE participation goals) on MoDOT projects.

The Mentor-Protégé Program centers on development of *mutually beneficial* business relationships among prime contractors/ consultants and DBE firms.

Ideally, this program (as well as other supportive services programs in place) will produce DBE firms that will advance to prime contractor/ consultant status.

DBE firms participating in the Mentor-Protégé Program must be independent business entities which meet the requirements for certification as outlined in the Code of Federal Regulations (CFR) Part 26.

The types of assistance which may be incorporated into a mentor-protégé program development plan include, but are not limited to the following:

- Business Planning
- Record Keeping
- Technical Assistance
- Capital Formation
- Financial Counseling
- Bonding
- Equipment Utilization
- Submitting Quotations
- Employee Management
- Project Management
- Structural Design
- Roadway Design
- Surveying
- Geotechnical Analysis
- Construction Inspection
- Public Involvement

For more information about the Mentor-Protégé Program, the complete program guidelines, and application forms, visit our Business Development & Compliance website at <https://www.modot.org/dbe-program>.

Melissa Stuedle, Director of Business Development & Compliance, 573.751.1216

Prenness Josey-Person, Contract Monitoring Specialist
St. Louis & Southeast District, 314.453.1877

April Hendricks-Brown, Contract Monitoring Specialist, St. Louis, 314.453.1872



DBE Lunch & Learn: DBE Mentor-Protégé Program

This Virtual Lunch & Learn will provide information about MoDOT's DBE Mentor-Protégé Program and Guidelines. MoDOT's Mentor-Protégé Program centers on the development of mutually beneficial business relationships between DBE firms and prime contractors & consultants. The purpose of this program element is to further the development of DBEs. Firms interested in participating as either as a mentor or protégé are welcome to attend.

DATE: Thursday, February 27, 2025

TIME: 12:00 p.m. - 1:00 p.m. CST

Click ***HERE*** to register.

<https://events.gcc.teams.microsoft.com/event/2afab9e0-391b-4788-a0cb-438f8b01bbca@b846b010-1228-4008-8163-f76aa98e5acd>



**Don't Miss the 2025 MoDOT Business
Development & Compliance Training
Symposium**
March 19-20, 2025
Independence Missouri

This annual event comes to **Kansas City** this year and will be held at **Stoney Creek Hotel in Independence, Missouri**, 18011 Bass Pro Dr, Independence, MO 64055.

Contact Stoney Creek Hotel directly to make room reservations.
(816) 908-9600

Cafe Mixer

Evening networking event
March 19, 5:30 - 7:30 PM

Full Day Symposium

A day filled with speakers, learning and networking galore.
March 20, 8:00 AM - 5:00 PM.

Breakfast and Lunch are provided but you must sign up in advance!
To attend these events, please click the **REGISTRATION bottom** NOW!

REGISTER HERE FOR THE 2025 SYMPOSIUM

**PLEASE FORWARD THIS REGISTRATION EMAIL TO YOUR
TRANSPORTATION RELATED DATABASES OF DBE FIRMS, PRIMES AND
TRANSPORTATION AGENCIES!**



<https://www.eventbrite.com/e/2025-modot-business-development-compliance-training-symposium-tickets-1110438654909?aff=odtdtcreator>



MoDOT Business Development & Compliance Staff

Missy Stuedle - Director (573) 751-1216

Missy.stuedle@modot.mo.gov

Zainab Jasim- Manager (573) 751-2806

Zainab.Jasim@modot.mo.gov

Rachel Owens - Executive Assistant (573) 526-2978

Rachel.owens@modot.mo.gov



MoDOT Business Development & Compliance Staff (continued)

St. Louis Office

April Hendricks-Brown – (St. Louis District)

Contract Monitoring Specialist (314) 453-1827 April.hendricks-brown@modot.mo.gov

Prenness Josey-Person – (St. Louis & Southeast District)

Contract Monitoring Specialist (314) 453-1877

Prenness.josey@modot.mo.gov

Cassandra Peoples – (St. Louis & Southeast District)

Senior Administrative Technician (314) 453-5029

Cassandra.peoples@modot.mo.gov