



2025 INVESTMENT IN INFRASTRUCTURE EXPO

SITE hosted its ninth Investment in Infrastructure Expo at the St. Charles Convention Center on February 19, 2025. The expo draws attendees across all areas of the construction industry from the St. Louis metro area and beyond.

Thank you to all the public and private project presenters, sponsoring companies, equipment dealers, contractors, and industry professionals who attended the event for making this the BEST EXPO in the region. SITE is already looking forward to next year.

All the capital improvement presentations are available to view on SITE's website. Click the resources tab on the home page and look for the [2025 Expo Presentations link](#). From there you'll be able to check out anything you may have missed. You can also find a link to view all the photos from the event. Check out a few photos on page 6.

SITE IMPROVEMENT
ASSOCIATION
NEWSLETTER

TABLE OF CONTENTS

Executive Director's
Column - P. 3

Legislative Report - P. 4

2025 Investment in
Infrastructure Expo - P. 6

Young Executives of
SITE - P. 8

Labor Report - P. 12

MEMBERSHIP UPDATE

As the new year begins, SITE’s membership grows, with seven new applications received. The renewal rate for 2025 membership dues currently stands at 64%. The renewal notices are due by March 1. If any current members are unsure whether their memberships have been paid or if you have not received an invoice, please contact Rhonda at rhonda@sitestl.org or call SITE’s office at 314-966-2950. For those members who have already renewed, we sincerely thank you for your continued support. If you have not renewed yet, there’s still time! SITE is a fantastic organization, and we cannot thrive without your support. Please remember to renew your membership today!

**A strong membership is vital for the SUCCESS of our Association.
Thank you for your continued support.**

WELCOME SITE’S NEWEST MEMBERS



CONCRETE DIVISION

Raineri Construction

1300 Hampton Ave., Suite 100
St. Louis, MO 63139
(314) 667-5913
Ada Brown



SEWER/UTILITY DIVISION

Landmarc Environmental Systems, LLC

3516 Ogden Rd
Springfield, IL 62711
(636) 331-5250
Jared Romaine



ASSOCIATE MEMBER

AAA Zoellner Materials, Inc.

5555 Old Highway 21
Imperial, MO 63052
(636) 942-4400
Trey Nichols



ASSOCIATE MEMBER

MWR Logistics

179 Carroll St.
St. Louis, MO 63104
(314) 690-2305
Maranda Witherspoon



ASSOCIATE MEMBER

POWERS Insurance & Risk Management

6825 Clayton Ave., Suite 200
St. Louis, MO 63139
(314) 725-1414
Chris Sullivan



ASSOCIATE MEMBER

Missouri 811

824 Weathered Rock Rd.
Jefferson City, MO 65101
(573) 556-8111
Randy Norden



EXECUTIVE DIRECTOR'S COLUMN

JEREMY BENNETT

Hard to believe we are finally weaning off the winter months. It's been brutal this year. I believe I saw reports of St. Louis having more snowfall this year than Wisconsin! The weather brought everyone back to winter months in the older days...walking uphill to school both ways in the snow.

A group of SITE members had the opportunity to turn up the heat in Cancun, Mexico, on the recent Management Seminars Trip. Sixty members took advantage of the Haven Riviera Resort to learn about constructing the modern workforce. Great topic with a lot of energy in the room! While out of the classroom, members enjoyed a beautiful resort, warm weather and some beautiful golf. The networking and learning experiences on this trip are very beneficial for all levels of management and leadership within SITE member companies. I highly encourage members to consider participating in one of these trips in the future.

This first issue of the 2025 SITE newsletter is absolutely packed with all kinds of happenings within the organization. I would like to congratulate Kurt Unnerstall on becoming President of SITE. Kurt will do a very nice job of leading the organization through 2025!

WOW is all I can say about the 2025 Investment in Infrastructure Expo. SITE set a new record with its largest attendance in the history of the organization with over 830 registrations. The snow came barreling in the day before, threatening to shut our event down, but the weather gods pushed the system out early, clearing up beautifully for the afternoon expo. Attendees rallied around project owners, exhibitors, and equipment dealers scattered throughout the tradeshow floor. The project presenters are giving us feedback that they are seeing the benefits

of new contractors bidding on their work and making new connections in the industry to better serve their constituents. Thank you to all the sponsors and members who make this event truly one of a kind!

Congratulations to past Executive Director Jay Schulteheinrich on a magnificent honor bestowed upon him for his years of service and dedication to SITE Improvement Association and SITE Advancement Foundation. The board dedicated SITE's headquarters to Jay, naming it the Jay Schulteheinrich Administration Building. Before the February board meeting, the directors and SITE staff read aloud a proclamation in his honor. Thank you, Jay, for your 39 years of leadership and dedication.

The new Training and Leadership Center has had a VERY busy start to 2025. The training rooms were in use almost every day in January and February for members personal use, SITE meetings, safety training sessions and professional development.

Will we get lucky with a mild and dry spring? Let's hope! Stay safe out there.





LEGISLATIVE REPORT

BY KEVIN McMULLIN

BRAVING THE COLD FOR KEHOE'S INAUGURATION



On January 13, nearly 25 SITE members bundled up against the cold to witness the historic inauguration of Missouri Governor Mike Kehoe. The day began with an exclusive tour of the Special Olympics headquarters, where Mark Bussen graciously hosted our group. From there, we traveled to the Missouri State Capitol, where we attended the inaugural ceremony and promenade, culminating in the grand Inaugural Ball. The event was more than a political milestone—it was an opportunity to engage with policymakers and industry leaders who shape the future of construction and infrastructure in Missouri.

THE LONG ROAD TO PROMPT PAY LEGISLATION

The fight for private prompt pay legislation continues. In December, SITE hosted a Stakeholder



Roundtable to discuss the Private Prompt Pay Bill with key industry leaders and lawmakers. Our efforts remain in full force, with Senate Bill 615, sponsored by Senator Travis Fitzwater, and House Bill 1089, championed by Representative David Casteel, making their way through the legislative process. Representative Casteel, a veteran of the construction industry, understands firsthand the financial strain caused by delayed payments and is actively pushing for a committee hearing. SITE is preparing in-person testimonials and letters of support to ensure this crucial bill gains traction, and we will keep our members informed as these efforts progress.

MISSOURI'S PROPOSITION A FACES LEGAL AND LEGISLATIVE CHALLENGES

Missouri's Proposition A, the voter-approved measure increasing the state's minimum wage and mandating paid sick leave, is facing significant legal and legislative hurdles. While the law remains in effect, its future is uncertain as court battles and legislative efforts threaten to alter its implementation.

Proposition A, which passed in November 2024, includes a gradual minimum wage increase, raising Missouri's rate to \$13.75 per hour on January 1, 2025, and scheduling another increase to \$15 per hour by January 1, 2026. Additionally, the law requires employers to provide one hour of paid sick leave for every 30 hours worked, with accrual beginning on May 1, 2025. Employers must notify employees about this new benefit by April 15, 2025.

However, on December 6, 2024, business groups, including the Missouri Chamber of Commerce, filed a lawsuit in the Missouri Supreme Court arguing that Proposition A violates the state's constitutional requirement that ballot initiatives must focus on a

single subject. Critics have also raised concerns about the summary language and fiscal impact report, claiming they were misleading. As of February 2025, the court has not scheduled hearings on the case, leaving businesses uncertain about what lies ahead.

In addition to the legal challenge, state lawmakers are working to modify or delay Proposition A. House Bill 567, sponsored by Representative Sherri Gallick, proposes delaying the paid sick leave requirement until January 1, 2026. This bill has gained strong support from industry groups, and SITE is currently reviewing it for potential endorsement. Other proposals under discussion include exemptions for small businesses and adjustments to wage increases to lessen the financial impact on employers.

The Missouri Supreme Court's ruling will be crucial in determining the law's future. If upheld, businesses and workers must fully comply with its provisions. If struck down, parts of the law could be halted or require legislative revisions. As these debates continue, SITE will be the go-to resource for our members, particularly those in the construction industry, to navigate the potential outcomes and compliance strategies related to Proposition A.

THE END OF DEI PROGRAMS - A SHIFT IN POLICY

On January 20, 2025, President Donald Trump signed Executive Order 14151, effectively dismantling federal Diversity, Equity, and Inclusion (DEI) programs. A follow-up memorandum instructed federal agencies to shut down DEI offices and place affected employees on administrative leave.

Missouri quickly followed suit. Governor Mike Kehoe issued Executive Order 25-18, barring the use of state funds for DEI initiatives and eliminating DEI considerations from hiring decisions. This policy shift has broad implications for workforce development, contractor requirements, and state-funded projects. SITE is closely monitoring these changes and will provide ongoing updates to help members understand how these new policies may affect the construction industry.

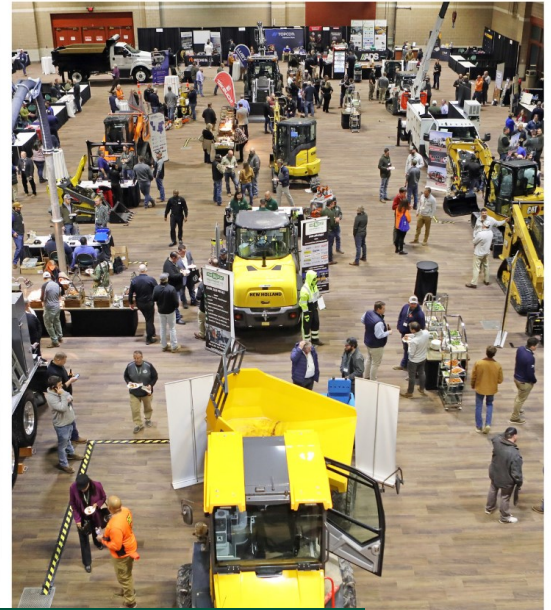
THE RACE FOR ST. LOUIS MAYOR HEATS UP

As St. Louis approaches the pivotal 2025 mayoral election, the competition is intensifying among four candidates vying for the city's top office. The primary election is set for March 4, followed by the general election on April 8, and the outcome will determine the direction of the city's leadership for years to come.

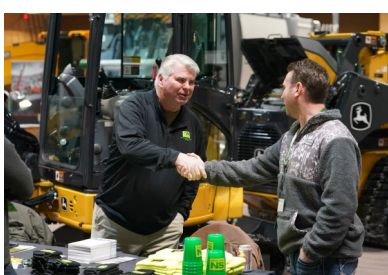
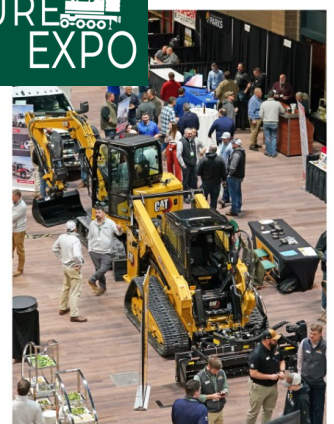
Incumbent Mayor Tishaura Jones is seeking a second term, highlighting her work on economic development, public safety reforms, and community health initiatives. However, she faces strong opposition from three challengers: Michael Butler, the city's Recorder of Deeds; Andrew Jones Jr., a businessman and perennial candidate; and Alderwoman Cara Spencer, who is making her second bid for the position.

Spencer, who previously ran against Jones in 2021, has emerged as a formidable contender. Recent polling suggests she leads the race, with a 50% favorability rating compared to Jones' 21%, a sign of potential trouble for the incumbent. Michael Butler is positioning himself as a leader focused on tackling crime, reducing vacant housing, and improving government efficiency, while Andrew Jones Jr. is emphasizing economic revitalization and public safety.

With voter registration deadlines approaching and absentee ballot requests now open, St. Louis residents have a major decision ahead. The election will determine how key issues such as crime, economic development, and infrastructure investment are addressed in the coming years. SITE will continue to monitor the race, providing insights into how the next administration's policies could impact the construction and infrastructure sectors.



2025 INVESTMENT IN INFRASTRUCTURE EXPO



MANAGEMENT SEMINARS

From January 22 to 29, nearly 70 SITE members escaped the chilly St. Louis weather to enjoy the sunny shores of Cancun, Mexico, during the annual Management Seminar trip that took place at the Haven Riviera Cancun Resort & Spa. Daniel and Jules Stover of Ensign Partners, LLC led a two-day seminar on “Constructing the Modern Workforce and Workplace.” Participants enjoyed the seminars, the resort’s amenities, and networking. The group even got to watch the Chiefs’ win the AFC Championship!

A big THANK YOU to the Management Seminars Committee for their efforts in planning this successful trip. Stay tuned for details on the 2026 adventure!



Could your son or daughter benefit from a \$5,000 scholarship?



SITE Advancement Foundation will provide up to six \$5,000 scholarships for the 2025/26 school year.

Applications are now available! Visit sitestl.org for Eligibility Rules, Application Process and 2025 Scholarship Application.

Requirements :

- Must be a son/daughter or step son/step daughter of a full-time employee of a SITE member
- At time of application, must be at least a high school senior
- Must pledge to use any money awarded towards undergraduate college studies/trade school
- Must be a full time student carrying a minimum of 12 credit hours

Accepting applications now through **March 21, 2025**



For More Information (314) 966-2950



For More Information www.sitestl.org

SITE APPRECIATES THE SUPPORT OF THESE COMPANIES

 **COLLINS & HERMANN**
INFRASTRUCTURE SOLUTIONS

1215 Dunn Road
PO Box 38901-0901
St. Louis, MO 63138
collinsandhermann.com

Mike Shepard
PRESIDENT | CHIEF OPERATING OFFICER
mshepard@collinsandhermann.com

office: (314) 869-8000 | mobile: (314) 267-0617 | fax: (314) 869-8498

 **ROLAND MACHINERY CO.**
www.rolandmachinery.com

James M. Jesuit
Vice President/
General Manager
St. Louis Division

KOMATSU

Phone: 314-291-1330
Fax: 314-291-8050
Cell: 314-378-2680
Email: jjesuit@rolandmachinery.com

4670 Crossroads Industrial Dr
Bridgeton, MO 63044

LUBY EQUIPMENT 

DAVID KEDNEY
EXECUTIVE VICE PRESIDENT

Mobile: 314-412-8567 >>> Work: 636-343-9970
dkedney@lubyequipment.com

Missouri Locations: O'Fallon | Fenton | Cape Girardeau
www.lubyequipment.com

Kim Connell, CPCU, CIC
Sr. Account Manager – Property & Casualty
p. 314-444-4822 | c. 618-977-3706
kim.connell@onedigital.com | onedigital.com

 **ONEDIGITAL CONSTRUCTION**

UHY Audit. Advisory. Tax. Consulting.
We know construction accounting

Marianne Biangardi
Sr. Associate, Marketing and Business Development
314-615-1309
mbiangardi@uhy-us.com

15 Sunnen Drive, Suite 100
St. Louis, MO 63143
uhy-us.com/industries/construction



RIVER-ROADS
Sales & Leasing



 1520 E. Chain of Rocks Rd.
Granite City, IL. 62040

 info@river-roads.com

 (314) 389-7487

 www.river-roads.com

**Moving Business Forward,
One Trailer at a Time.**

**Additional Ad Space Available -
contact Leah (314) 966-2950**

**Additional Ad Space Available -
contact Leah (314) 966-2950**

SITE APPRECIATES THE SUPPORT OF THESE COMPANIES



BRIDGING AMERICA'S COMMUNITIES
THAT'S THOMAS PRIDE.

Thomas Industrial Coatings, Inc. is a multi-certified industrial painting and coatings contractor dedicated to quality, safety, and efficiency. We take great pride in our work, and it shows on every job we do across the country.

THOMAS INDUSTRIAL COATINGS™

thomasindcoatings.com (636)475-3500 For career opportunities please visit thomasindcoatings.com/careers



Vee-Jay

314-351-3366
info@veejaycement.com
www.veejaycement.com

8053 Chivvis Drive
St. Louis, Missouri 63123



PAT KELLY EQUIPMENT CO.
FAMILY OWNED SINCE 1976

Serving Contractors for 45+ Years
1976 2024

NEW HOLLAND CONSTRUCTION **NATIONAL CRANE**

NEW & USED EQUIPMENT | PARTS | RENTAL | SERVICE | SUPPLIES | TOOLS

314-895-9500 | PATKELLY.COM



BUDROVICH

Crane Rental, Excavation and Grading, Utility Services, Land Development, Marine Services, Mechanical Insulation, Rebar Services, Arch City Ironworks

(314)892-3030
www.budrovich.com



Joe Armour
President/CEO
MLO# 963499

636.970.0440 office
314.581.2099 cell
joe.armour@1stadvantagebank.com

240 Salt Lick Road
St. Peters, MO 63376

1st Advantage Bank
Community Minded, Technology Driven

1stAdvantageBank.com

**Additional Ad Space Available -
contact Leah (314) 966-2950**

**Additional Ad Space Available -
contact Leah (314) 966-2950**

**Additional Ad Space Available -
contact Leah (314) 966-2950**

Y.E.S. INTRODUCED 2025 WITH A HIGH-ENERGY HAPPY HOUR!

Young Executives of SITE (Y.E.S.) introduced its 2025 calendar with an exciting Happy Hour on January 30 at Westport Social. With an open bar, great food, and lively games, attendees had the perfect opportunity to network, unwind, and strengthen connections with fellow emerging leaders in the construction industry.

Y.E.S. continues to prove the power of community among young professionals. In 2024, the group launched a Corporate Sponsorship Program with just three sponsors. This year, we're proud to have grown to eight sponsors who recognize the value of investing in the next generation of industry leaders.

A huge THANK YOU to our 2025 Y.E.S. Corporate Sponsors:

- K.J. Unnerstall Construction Co.
- Millstone Weber, LLC
- N.B. West Contracting
- Pace Construction Company
- RubinBrown LLP
- United Rentals
- Vee-Jay Cement Contracting Co., Inc.

Beyond events, the Y.E.S. Steering Committee is committed to fostering stronger engagement among its members. This year, the committee is personally reaching out to members to ensure they are connected and getting the most out of the group's opportunities.

Do you know someone in your company who would benefit from connecting with other young and emerging leaders? Reach out to SITE staff to help them get plugged into this thriving community!

Membership is just \$50 per year and covers access to all Y.E.S. events, including Happy Hours, professional development training, field trips, and more!



YOUNG EXECUTIVES OF SITE 2025 CALENDAR OF EVENTS

APR 08 Legislative Day
Jefferson City

MAY 08 Happy Hour
Location: TBD

JUN Field Trip
Location: TBD

JUN 18 Community Service
"Yeah, I Built That"

OCT 02 Clay Bird Shoot
Black Hawk Valley

NOV Leadership & Development Event

NEXT-STEP CONNECT: STRENGTHENING CONTRACTOR-TO-CONTRACTOR RELATIONSHIPS

Success in the construction industry isn't just about what you know; it's about who you know and how you learn from each other. That's the foundation of NEXT-STEP CONNECT, a contractor-to-contractor program designed to build genuine, lasting relationships within the industry.

This January, SITE welcomed a new cohort of 36 contractors into the program, reinforcing the power of peer learning and collaboration. NEXT-STEP CONNECT pairs contractors with other contractors for two meetings within an eight-week cycle, giving them a chance to step outside their usual circles and engage in real, experience-based conversations.

This program is unique because it focuses on authentic engagement, not sales pitches or quick introductions. It's about sharing industry knowledge, learning from each other's experiences, and developing professional relationships that extend far beyond the program. Whether discussing leadership strategies, job site challenges, or innovative project solutions, NEXT-STEP CONNECT is built to foster mutual growth among contractors who understand the industry's unique demands.

This program has already proven to be a game-changer for many participants, opening doors to new perspectives, fresh ideas, and valuable business relationships. If you're a contractor looking to connect with industry peers in a meaningful, productive way, this is your opportunity.

Applications are always open! Strengthen your network, gain insights from fellow contractors, and be part of a program shaping the industry's future, one conversation at a time. Here is a list of the companies that have participated in the program.



Agricycle, Inc.	Ellingson Companies	Missouri Constructors
Andis Industrial Field Service	GS Grinding Services	N.B. West Contracting
Archview Services	Gerstner Electric	Pace Construction
Bates Utility Company, Inc.	Hillsdale Demolition Contracting	PCX Construction
Brake Landscaping and Lawn Care	J & J Boring, Inc.	Premier Demolition
Brewster Companies	J&R Concrete Services	Pugsley Services
Byrne & Jones Construction	Jath Construction Company	Ray LaFore Truck Service, Inc.
Cherokee Hauling, LLC	Keeley Construction Group	Site System Landscaping
CMT LLC	Kelpe Contracting	Sultan General Construction Co.
Diamond Hauling	Kendall's Hauling	T and T Contracting Co.
Drainscapes	LanDesign, LLC	TaylorMade Construction
E. Meier Contracting, Inc.	Local Cleaners	Thomas Industrial Coatings, Inc.
Elastizell of St. Louis, Inc.	Millstone Weber	TSI Global Companies



CONTRACTOR MEMBERS

Concrete Division

Alfred F. Mullen Concrete Contracting Co. Mike Mullen (314) 966-0177
 Birkemeier Construction, Inc. Jeff Birkemeier (636) 978-8892
 Boling Concrete Construction Cindy Boling (314) 772-6300
 Builder's Bloc Contracting Services, LLC Kevin Deptula (314) 336-0200
 Byrne & Jones Concrete Kevin Klette (618) 578-0931
 Concrete Strategies, LLC Pat Moriarity (314) 595-6300
 Contegra Services, LLC Jim Mundy (618) 219-4895
 Fenix Construction Company Steve Ladenberger (314) 892-4700
 Hawkins Construction and Flat Work LLC Bob Hawkins (636) 409-1115
 HF Flatwork Carl Hines (636) 262-2684
 HS Concrete Contracting RJ Laurentius (314) 799-4850
 J.S. Aubuchon Concrete Company Jerry Aubuchon (636) 661-5655
 JB Concrete and Construction Joe Burke (636) 262-9592
 Joint Sealing Solutions Blake Gamber (314) 229-1460
 Karrenbrock Construction, Inc. Roger Karrenbrock (636) 828-5420
 Musselman & Hall Contractors, LLC Andrew Krieger (314) 584-0617
 Next Level Construction, LLC Charlie Vitale (314) 575-0285
 Obax Infrastructures/O'Basuyi Construction Patrick O'Basuyi (314) 462-0620
 Oreo & Botta Concrete Company Tom Milne (314) 427-3800
 Raineri Construction Tim Kile (314) 667-5913
 Scharf Construction Co., LLC Rick Scharf (314) 869-0060
 Smith & Sons Contracting Dakota Smith (636) 284-0562
 Spencer Contracting Company Tony Spencer (314) 843-5166
 Vee-Jay Cement Contracting Company, Inc. Stephen Krieger (314) 351-3366
 Vision Civil Construction, LLC Julie VanCardo (314) 445-2020

Earthmoving Division

Ballmann Earthworks, LLC Jon Ballmann (636) 236-4242
 Bloomsdale Excavating Co., Inc. Scott Drury (573) 483-2564
 Brandt Contracting, Inc. Sedrick Brandt (636) 352-4818
 Budrovich Excavating & Contracting Jeff Budrovich (314) 892-3030
 Busken Construction Company David Busken (314) 630-8866
 CMK Excavation Carter Kuenzel (636) 303-9831
 Gerling Excavating Bryan Gerling (636) 357-8182
 JTL Matthew Hollingsworth (314) 831-3954
 K. J. Unnerstall Construction Company Kurt Unnerstall (636) 239-2028
 Kamadulski Excavating Ryan Fisher (618) 931-3760
 Kendall's Hauling LLC Kendall Davidson (314) 517-0905
 Kuesel Excavating Co., Inc. Matt Steiniger (636) 978-3478
 McFry Excavating, Inc. Tom Jones (636) 386-4779
 Nor-Vel Grading & Excavating, LLC Matt Beckmann (636) 387-1888
 PCX Construction, LLC Matt Clark (636) 287-1848
 Rich Gullet & Sons, Inc. Randy Gullet (636) 271-2327
 Sellenriek Grading Company, Inc. Drew Sellenriek (636) 938-9299
 Semke Grading, LLC Brenda Semke (636) 250-4225
 T & M Excavating, Inc. Tony Gonzalez (314) 220-3576
 Town & Country Grading, Inc. Alan Laughlin (636) 475-7887

Asphalt Paving Division

Accurate Asphalt Paving Co., Inc. Dan Lucas (636) 343-5199
 Byrne & Jones Construction Brian Goggins (314) 567-7997
 E. Meier Contracting, Inc. Rod Fain (636) 300-0908
 Diversified Contractors Brad Laramie (636) 577-6603
 Ford Asphalt Company, Inc. Brad Fritsche (314) 291-2600
 Jokerst Paving & Contracting Grant Jokerst (636) 937-7101
 Keeley Construction Matt Taylor (314) 421-5933
 Leritz Contracting, Inc./Busy Bee Paving, Inc. Joe Leritz (314) 821-2615
 Missouri Petroleum Products Company Mike Hartman (314) 219-7305
 Oxendine Paving Company Cheyenne Oxendine (314) 944-7283

Landscaping Division

A. Waldbart & Sons Nursery Jay Behle (314) 895-4589
 Baxter Farms & Nurseries Adam Guthrie (314) 542-9400
 Barnes Landscaping LLC James Barnes Jr. (314) 749-6298
 Brake Landscaping & Lawn Care Robert Brake (314) 776-5296
 Conoyer Brothers Landscaping, Inc. Craig Conoyer (636) 397-7217
 DJM Ecological Services, Inc. Doug Bauer (314) 478-2388
 ECO Constructors Shawn Garland (636) 561-3158
 Frisella Nursery & Landscape Group Tony Frisella (636) 798-2555
 Givens Contracting LLC Carl Givens (573) 619-9959
 Greenspace Landscaping Stephen Kelly (314) 895-8860
 Houska, Inc. Ronald Houska (636) 463-2153
 Just in Time Lawn Care Justin Augenstein (636) 328-5886
 LanDesign, LLC George Tucker, Jr. (636) 332-4500
 MACC Contracting Alex Straughn (573) 745-7659
 Midwest Turf Contractors Charity Keaven (636) 926-9988
 Missouri Constructors Gabriel Cardenas (636) 358-3535
 Pro Outdoor, Inc. Jon Lauer (636) 695-7800
 Roden's Landscaping, Inc. Steve Roden (636) 561-3947
 ROSCH Midwest, LLC Scott Rozier (636) 519-7770
 Schaefer-Meyer Seed-Sod Div. 1, Inc. Greg Meyer (636) 947-7173
 Site System Landscaping, LLC Kathy Roden (636) 332-7333
 Stormwater Pro-tect STL, LLC Drew Hane (314) 315-5696

Highway/Bridge Division

AMCON Municipal Concrete, LLC Paul Amelong (636) 379-9396
 Brewster Companies Craig Schmidt (314) 409-5149
 Gershenson Construction Co., Inc. Paul Warner (636) 938-9595
 KCI Construction Tory Moorman (314) 894-8888
 M & H Concrete Contractors, Inc. Rick Matteson (636) 379-9682
 Millstone Weber, LLC Chris Gottman (636) 949-0038
 N.B. West Contracting Company, Inc. Chris West (314) 962-3145
 Pace Construction Company Ryan Casey (314) 524-7223
 Pavement Solutions, LLC Matt St. John (636) 970-2727
 R. V. Wagner, Inc. Scott Inserra (314) 892-1600

Sewer/Utility Division

Bahr Hydroexcavation, LLC Leslie Bahr (314) 809-1172
 Bates Utility Company, Inc. Tim Bates (636) 939-5628
 Bi-State Utilities Company Mike Jerome (314) 209-0202
 C.E. Bollmeier Co., Inc. Bill Bollmeier (314) 298-7885
 C2 Service Group, Inc. Lorri Keenum (636) 283-5031
 Castle Contracting, LLC Brian Carlson (314) 421-0042
 David Mason + Associates Spencer Mason (314) 534-1030
 Fred M. Luth & Sons, Inc. Mike Luth (314) 771-3892
 Girdner Contracting LLC Bridget Girdner (314) 605-4301
 Hunt Excavation Susan Hunt (314) 378-1078
 J & J Boring, Inc. Jennifer Bouquet (636) 566-6766
 J & S Industrial Services, LLC Billy Kinkel (888) 217-6811
 J.H. Berra Construction Company, Inc. Frank Berra (314) 487-5617
 J.W. Bommarito Construction Co., Inc. Joe W. Bommarito (314) 353-0104
 Karrenbrock Excavating LLC Doug Bierman (636) 828-5420
 Kelpe Contracting, Inc. Tom Kelpe (636) 458-1400
 Landmarc Environmental Systems, LLC Jared Romaine (636) 331-5250
 M. Turpin Services Mitchell Turpin (636) 262-6230
 Poeling Construction Shane Poeling (636) 463-2437
 S & S Utility Contracting Company, Inc. Danny Purler (314) 220-5161
 SAK Construction Jerry Shaw (636) 385-1500
 Southern Ditching & Excavating Company T.J. Moor (636) 441-1112
 SweenCo LLC Sarah Sweeney (636) 699-6882
 T & T Contracting Company Malcom Thompson (314) 267-3114
 TaylorMade Construction, LLC Andre Taylor (314) 868-1005
 Unnerstall Contracting Company, LLC Steve Unnerstall (636) 257-3003
 Williams Tunnelling Industries, Inc. Edison Williams (832) 889-1468
 XL Contracting, Inc. Ken Novel (636) 970-2710

Specialty Division

AgriCycle, Inc. Justin Davis (636) 861-3344
 All Star Concrete Pumping Keith Dennis (636) 475-9539
 Andis Industrial Field Services Joe Romaine (314) 581-8298
 Archview Services Alan Jackson (314) 474-7800
 Badger Daylighting Corporation Benji Koonce (314) 954-7192
 Bellon Wrecking Ben Mohrmann (314) 497-7585
 Big Wheel National Trucking, LLP Jay Ashford (618) 530-1231
 Cherokee Hauling, LLC Mike Tallis (314) 393-7112
 CIP Utilities, LLC Kevin Seller (314) 220-3489
 CMT LLC Cory Elliott (314) 378-5326
 CNC Foundations, Inc. Tom Layne (618) 213-8853
 Collins & Hermann, Inc. Mike Shepard (314) 869-8000
 Custom Service Crane Brian Klitzing (217) 897-1700
 DGJ Hauling LLC Antwane Taylor (618) 520-8630
 Drainscapes Casey Graves (314) 892-9888
 Drilling Service Company Sean Jackson (314) 291-1111
 Dynamic Logistics Malcolm Nyatanga (314) 562-6999
 Elastizell of St. Louis, Inc. Jane Megown (636) 225-4311
 Ellingson Companies Kevin Smith (314) 759-5900
 Fick Supply Service, Inc. Dave Fick (314) 560-0146
 George McDonnell & Sons Tuckpointing Co., Inc. Debbie Giebe (314) 739-0468
 Gerstner Electric, Inc. Chris Gerstner (636) 349-5999
 GS Grinding Services, LLC Dave Grimes (636) 474-1183
 Hansen's Tree Service & Environmental Resources Ken Byrne (636) 379-1830
 Hillsdale Demolition Contracting Lakkia Davis-Hynes (314) 899-0333
 i3 Broadband Mike Elam (314) 440-1445
 Ideal Landscape Group Dave Buckel (314) 892-9500
 J&R Concrete Services, LLC Stephanie Johnson (314) 596-2311
 Jath Construction Co., LLC Trish Herron (314) 322-7998
 Kurtz Nursery and Topsoil Matthew Kurtz (636) 405-2667
 Local Cleaners Joshua Dorsey (314) 449-4169
 McConnell & Associates Corporation Greg Lucas (314) 962-1920
 MW Drone Photography Mark Wheeler (314) 398-2569
 Native Landscape Solutions, Inc. Chuck Caverly (314) 544-7918
 Next Contracting Abby Haefner (618) 910-9468
 Premier Demolition, Inc. Bill Buell (314) 645-5566
 Pugsley Services Claire Pugsley (618) 372-4466
 Reinhold Electric, Inc. Jerry Reinhold (314) 631-1158
 Russ Erlinger Crane Service Hunter Hillesheim (618) 537-4408
 Sultan General Construction Company Raymond Straughter (314) 571-8549
 Thomas Industrial Coatings, Inc. Don Thomas (636) 475-3500
 Traffic Control Company Tony Wilson (636) 225-7800
 Traffic Management, Inc. Joe Potter (314) 943-5284
 TraMar Contracting, Inc. Peggy McGrath (636) 255-0808
 TSI Global Companies Tim Agler (314) 220-2768
 Two Alpha Contracting, LLC Rhiannon Parisi (636) 384-1296

January/February



ASSOCIATE MEMBERS

1st Advantage Bank	Joe Armour	(636) 970-0440	Key Equipment & Supply Co.	Katie Westfall	(800) 325-4323
24/7 OnSite Cameras	Nick Bartolotta	(314) 718-0453	Kienstra Co.	Dan Bruns	(314) 994-1616
A Johnson & Associates	Amber Johnson	(636) 448-3324	Kirby-Smith Machinery, Inc.	Matt Nelson	(314) 729-0125
AAA Zoellner Materials, Inc.	Trey Nichols	(636) 942-4400	Kohrs Truck & Auto Repair, Inc.	Harold Kohrs	(636) 240-7935
Acuity Insurance	AJ Gajdosik	(636) 287-2068	Lizmark Branded Solutions	Liz Tillman	(314) 394-0901
Advanced Drainage Systems (ADS)	Brian Snelson	(618) 593-6135	Lockton	Dave Estes	(314) 812-3144
Aero Snow	Kendall Davidson Jr.	(314) 820-2600	Luby Equipment Services	David Kedney	(636) 343-9970
ALJ Contracting and Abatement, LLC	Archie Luss Jr.	(314) 583-5759	Luby Shoring Services, LLC	John Powell	(636) 660-7467
American Ductile Iron Pipe	Brad Forester	(612) 239-6444	M&T Capital and Leasing Corp	Mike Range	(618) 606-1661
American Steel Fabrication, Inc.	Tim Thomas	(636) 475-7272	Magruder Limestone Company, Inc.	Shelby Rowland	(636) 528-4180
ASP Enterprises, Inc.	Guy Litteken	(636) 343-4357	Marsh McLennan Agency - St. Louis		(314) 594-2700
Associated Bank	Jeremy Scott	(314) 558-7781	MayeCreate, LLC	Stacy Brockmeier	(573) 447-1836
Bank of Springfield (BOS Bank)	Daniel Steiniger	(314) 888-6693	McCoy Construction and Forestry	Andy Flinn	(636) 349-0200
BITCO Insurance Companies	Chris Demse	(314) 822-4446	Metal Supermarkets	Ed Cahoon	(314) 764-7610
Bobcat of St. Louis	Ben Allen	(636) 225-2900	Middendorf Logistics, Inc.	Doniella Snyder	(618) 540-8446
Bonding & Insurance Solutions	Eric Dedovesh	(816) 591-3026	Midest Municipal Supply Inc.	Nate Janini	(618) 344-1040
Central Power Systems	Chuck Bauers	(314) 427-4911	Mississippi Valley Equipment Company	Bob Clapsaddle	(314) 869-8600
Central Stone Company	Randy Hackworth	(314) 830-9000	Missouri 811	Randy Norden	(573) 556-8111
Champion Precast, Inc.	Joel Anderson	(573) 384-5855	Missouri Employers Mutual	Flint Walton	(660) 287-1983
Charles L. Crane Agency Company	Frank Rebholz III	(636) 537-5641	MWR Logistics	Maranda Witherspoon	(314) 690-2305
City Rent a Truck	James McKinley	(314) 231-3100	Neenah Foundry Company	Greg Hornbuckle	(314) 614-3627
Clayton Engineering Company, Inc.	Steve Quigley	(314) 692-8888	New Frontier Materials	Rusty Durbin	(314) 473-3434
CMIT Solutions	Dave Roberson	(314) 639-0143	NICHE Public Relations & Communications	Nina Thompson	(314) 550-2004
CMW Equipment	Larry Glynn	(314) 993-1336	Nu Way Concrete Forms, Inc.	Mike Townsend	(314) 544-1214
CNB St. Louis Bank	Jeff Files	(314) 735-1865	OMG Construction Services	Tim Tobin	(314) 749-9113
Commerce Bank	Shad Becker	(314) 746-5272	OneDigital Construction	Kim Connell	(314) 444-4949
Consolidated Pipe & Supply Company	Chris Hausmann	(636) 825-6678	Pat Kelly Equipment Company, Inc.	Brian Kelly	(314) 895-9500
Construction Risk Partners	Jeff Stark	(314) 616-2121	Peoples Savings Bank	Don Meyer	(636) 398-5600
Contech Engineered Solutions, LLC	Rob Richardson	(417) 459-7875	Purple Wave Auction	Scott Broz	(636) 725-6737
Contractor Solutions	Matt Kelly	(515) 201-4377	Rackers & Fernandez, LLC	Sergio Fernandez	(636) 498-1900
Core & Main	Randy Bradley	(314) 432-4750	Ray Lafore Truck Service, Inc.	Megan Bertelsman	(618) 232-0774
County Prestress & Precast, LLC	Lyndell Borcherding	(618) 548-1190	Ritchie Bros. Auctioneers	Michael Juenger	(636) 751-8383
Craneworks	Dan Christian	(636) 495-6080	River-Roads Trailer Sales & Repair	Jon Rullkoetter	(314) 389-7487
Dan Althoff Trucking, Inc.	Dan Althoff	(636) 677-7772	Rock Hill Quarries Co.	Bruce Dresser	(314) 968-2336
The Daniel and Henry Co.	Richard Boyette	(314) 444-5011	Roland Machinery Company	James Jesuit	(314) 291-1330
Diamond Hauling, LLC	Bobbi Joerling	(636) 828-4635	POWERS Insurance & Risk Management	Chris Sullivan	(314) 725-1414
Elm Production and Marketing	Lacy Gevers	(573) 220-7843	Royal Banks of Missouri	Max Mitts	(636) 233-4197
Emerald Isle Farms LLC	Will Rickelman	(314) 249-7862	RubinBrown LLP	Ken Van Bree	(314) 290-3429
Energy Petroleum Company	Steve Madras	(314) 383-3700	Rudd Equipment Company	John Robinson	(314) 487-8925
Enterprise Bank & Trust	Brian Geen	(314) 543-3914	Safety Training Resources	Jeff Viehmann	(314) 808-3502
Enterprise Truck Rental	Gable Fortune	(314) 803-4170	Sandberg, Phoenix & von Gontard, P.C.	Tony Soukenik	(314) 446-4279
Equipment Share	Jonathan Rickermann	(314) 230-4242	Schmersahl Treloar & Co.	Mark O'Donnell	(314) 966-2727
Expert Rentals	Chris Graeler	(636) 379-4933	SCI Engineering, Inc.	Karl Koenigsfeld	(636) 949-8200
Fabick Cat	Scott Crean	(636) 626-8948	SealMaster St. Louis	Brian Villegas	(314) 739-7325
FasTrac Construction Products	Clint Reeves	(813) 380-4747	Simpson Materials Company	Steve Simpson	(636) 343-4944
Federated Insurance	Garret Baker	(573) 301-2006	SLC3	Kelly Jackson	(314) 278-8241
First Bankers Trust Company	Clay Shackelford	(314) 435-4144	St. Louis Composting	Roy Gross	(636) 861-3344
Five Star Factoring	Jennifer Bell	(636) 447-3081	Stormwater STL LLC	Steve Polk	(314) 406-7655
Forklifts of St. Louis	Patrick Cronin	(314) 737-2320	Sunbelt Rentals Shoring Solutions	Brandon Morgan	(314) 955-4518
Fred Weber, Inc.	Tom Greco	(314) 473-3419	Sydenstricker Nobbe Partners	Brandan Kertz	(314) 805-9255
Gateway Dredging & Contracting, LLC	Terry Bangert	(636) 665-5180	Topcon Solutions	Terry Gammill	(618) 985-1791
Gateway Safety Consulting, LLC	Mr. Eric Caldwell	(636) 373-4696	Total Safety Solutions	Andrew Tuttle	(636) 388-2685
Hanes Geo Components	Steve Wright	(636) 875-7317	UHY Advisors, Inc.	Marianne Biangardi	(314) 208-2501
Hartford Bond	Dave Shelton	(913) 693-2943	United Rentals	Angie Wheeler	(314) 267-7621
Hayden Machinery LLC	Jeremy Hancock	(314) 550-1400	United Rentals -Trench Safety	Ron Voegtli	(314) 729-0003
Herc Rentals ProSolutions	Jim Neal	(636) 696-4022	USI Insurance Services LLC	Clinton Happe	(314) 342-7158
Heritage Petroleum, LLC	Tracy Schau	(314) 250-1434	Vanguard Truck Centers	Dan Green	(618) 857-7625
Horton Supply	Cody Edwards	(314) 791-0760	Vermeer Midwest, Inc.	Chad Van Soelen	(636) 532-2332
Interstate Testing Services	Andy LaPlante	(314) 994-0641	Wallis Lubricants	Kati Douglas	(636) 271-0900
ISCO Industries, Inc.	Craig Rahifs	(314) 973-0992	Warrenton Oil Company	David Baker	(636) 456-3346
John J. Guilfooy & Associates, LLC	John Guilfooy	(314) 781-1122	Western Ready-Mix, Inc.	Tom Auck	(636) 519-1522
K & K Supply Inc.	Joe Backer	(636) 349-1141	Wieser Concrete Products, Inc.	Drew Wieser	(618) 251-9210
K & P Precast, Inc.	Tammy Daugherty	(636) 978-3111	Winter Brothers Material Company	Ryan Winter	(314) 843-1400

MAKE SITE WORK FOR YOU

Call on SITE members for the highest quality products and services

January/February

Upcoming Professional Development & Safety Training

2025**MAR****19-20****OSHA 10 COURSE**8:00 AM - 4:00 PM
\$100 PER PERSON**MAR****26****FOCUS 4
CONSTRUCTION
HAZARDS COURSE**8:00 AM - 12:00 PM
\$25 PER PERSON**APR****03****HEAT STANDARD
COURSE**8:00 AM - 10:00 AM
\$10 PER PERSON**APR****08****MASTERING PAYROLL &
CONTRACT
MANAGEMENT SEMINAR**11:30 AM - 1:30 PM
FREE TO ATTEND!**APR****09****SILICA COMPETENT
PERSON COURSE**8:00 AM - 10:00 AM
\$55 PER PERSON**APR****23****QUALIFIED RIGGING &
SIGNALING COURSE**9:00 AM - 12:00 PM
\$150 PER PERSON**MAY****06****DEFENSIVE DRIVER
COURSE**8:00 AM - 12:00 PM
\$30 PER PERSON**SITE Training & Leadership Center**

2051 Exchange Dr., St. Charles, MO 63303

All course and seminar
descriptions are available at
www.sitestl.org/events

SITE'S HEADQUARTERS RENAMED TO THE JAY SCHULTEHENRICH ADMINISTRATION BUILDING

After 39 years of working for SITE Improvement Association, Jay Schulteheinrich, first and former Executive Director of SITE, hung up the tie in 2016. Those years of dedication and service were honored at his retirement party, but the board wasn't finished recognizing him for his accomplishments.

During the 2024 Fall Board meeting in September, the Board unanimously approved naming SITE's headquarters after him. Then SITE President Mike Shepard (Collins and Hermann, Inc.) said it best: "the organization was built on the strong foundation of Jay Schulteheinrich's leadership and dedication, which not only advanced SITE but also the construction industry. We would not be where we are today without Jay."



Pictured at the dedication from left to right: Kevin Betley, Matt Clark, Mike Tallis, Kevin McMullin, Jennifer Bouquet, Andre Taylor, Tony Hawkins, Ben Polman, Kurt Unnerstall, Rick Scharf, Jay Schulteheinrich, Sergio Fernandez, Jeremy Bennett, Chris Boeger, Steve Roden, Chris Gottman, Terry Bangert, Adam Guthrie, Chris West, Rhonda Wilson, and Burnea Lester.



SITE'S 2025 CHARITY OF THE YEAR: SUPPORTING SPECIAL OLYMPICS MISSOURI

SITE believes in the power of community, giving back, and making a lasting impact. Each year, our Board President selects a Charity of the Year, rallying SITE members to support an organization that is changing lives. For 2025, SITE Board President Kurt Unnerstall has chosen to support the Special Olympics of Missouri—a cause that embodies the spirit of resilience, determination, and inclusion.

The mission of Special Olympics Missouri is to provide year-round sports training and athletic competition for children and adults with intellectual disabilities. Through sports, these incredible athletes build physical fitness, gain confidence, and experience the joy of competition, teamwork, and friendship. More than just a game, the Special Olympics gives participants the opportunity to push their limits, break down barriers, and be celebrated for their incredible achievements.

In construction, we understand the value of hard work, perseverance, and teamwork—qualities that define Special Olympics athletes. Supporting this cause means giving these individuals the chance to succeed, just like we strive for success in our industry. Through various fundraising efforts and giving opportunities throughout the year, SITE members can make a direct impact in helping these athletes train, compete, and thrive. Whether it's through donations, event participation, or spreading awareness, every effort helps change lives and strengthens the bond between SITE and our community.



Be on the lookout for SITE fundraising initiatives throughout 2025, including charity events, donation drives, and unique ways to contribute. Together, we can make a difference by supporting a cause that champions inclusion, empowerment, and the celebration of every individual's potential. Let's rally together and make 2025 a year of impact! Stay tuned for upcoming opportunities to support the Special Olympics of Missouri and help create a future where every athlete gets their moment to shine.



SITE STRENGTHENS WORKFORCE DEVELOPMENT THROUGH KEY PARTNERSHIPS

SITE continues its commitment to workforce development. On Feb. 6, SITE and Clayco partnered to present a “Navigating Field Culture” training for the Missouri Works Initiative's pre-apprentice students at the SITE Training & Leadership Center. As part of SITE's ongoing collaboration with the Missouri Works Initiative Pre-Apprenticeship Program, this class aimed to help students develop essential skills for the job site. Missouri Works Initiative is sponsored by the Missouri AFL-CIO (American Federation of Labor – Congress of Industrial Organizations). The initiative connects individuals with job-search assistance, skills training, and pathways to apprenticeship opportunities, ensuring they are prepared for careers in the skilled trades.

In addition, SITE hosted Millstone Weber's Project Pave for a Saturday Academy session at the Training & Leadership Center. Students gained financial literacy skills, explored construction mathematics, and received mentorship from SITE Board Member Andre Taylor.



LABOR RELATIONS

UPCOMING CONTRACT EXPIRATIONS

Laborers Seed/Sod and Nursery Contract with Irrigation Addendum expires May 1, 2025. Negotiating committees have been called and meetings with the union have been scheduled.

The Bituminous Paving Contracts covering small and large paving work expires this year on June 1, 2025, with both Operating Engineers Local 513 and the Missouri Kansas Laborers District Council. Negotiating committees have been called and meetings with the union are currently being scheduled.

It will be a busy spring for contract negotiations.

WAGE NOTIFICATIONS

MISSOURI KANSAS LABORERS DISTRICT COUNCIL

SITE and the Missouri Kansas Laborers District Council changed the wage increase date in the 2024 negotiations from the first Monday in March to the first Monday in June for the local counties, and most outstate counties covering heavy/highway work will have increases due the first Monday in May.

All new wage allocations will be coming out in the months of March and April. The bulk of the wage increases will follow the \$3.25/hr increase. Please refer to the schedule of wages sheet for each county.

OPERATING ENGINEERS LOCAL 513 WAGE NOTIFICATIONS

2025 Wage Notices for Heavy/Highway, Commercial, and Residential will be sent out as soon as the union allocates its \$2.75/hr increase; typically, those are sent out in March. The effective date is Monday, May 5.

Local 513 retirees are still on a 40-hours-per-week restriction. If the trustees choose to lift the restriction, SITE will send notices out to our members.

CEMENT MASONS WAGE NOTIFICATION

2025 Wage Notices for Heavy/Highway, Commercial, and Residential wage rates will be sent out to contractors in March. The effective date of the \$1.40/hr increase will take place on Monday, April 7.

Recently at the Saint Louis Construction Cooperative meeting, a joint labor and management group, there was a discussion about manpower for the upcoming 2025 construction season. The group collectively talked about upcoming projects and the amount of work that owners in the Saint Louis area are getting ready to bid. Both labor and management estimate a flat increase in man hours for 2025. Below are the employment percentages for each trade in Saint Louis. As you can see, many of the trades, even in January and February, are near full employment.

96% Operators	100% Plumbers & Pipefitters
99% Laborers	98% Electricians
99% Cement Masons	98% Sheet Metal Workers
99% Teamsters	95% Carpenters
99% Iron Workers	99% Sprinkler Fitters
99% Insulators	99% Painters
99% Brick Layers	99% Boiler Makers

Even with a flat projection in man hours over 2024, expect there to be more manpower issues into 2025. Expect labor and management to relax the suspension of benefits provisions to allow retirees to work more hours. Labor and management are also both encouraging contractors to hire apprentices and groom the next generation of construction workers. Should you have any questions about hiring an apprentice or individuals off the street, please reach out to Jeremy Bennett at SITE's office.

FROM THE SAFETY SIDE

THE IMPORTANCE OF FIRST AID, CPR, AND AED TRAINING ON JOBSITES



Construction sites in St. Louis are bustling with activity, from large-scale commercial projects to vital infrastructure developments. However, they also present numerous hazards, including falls, electrocution, and heavy machinery accidents. In such high-risk environments, ensuring that workers are trained in first aid, child and adult CPR, and the use of Automated External Defibrillators (AEDs) is not just an added precaution—it is a crucial, lifesaving necessity.

IMMEDIATE RESPONSE TO EMERGENCIES

Accidents on construction sites can happen in an instant. A worker may suffer a cardiac arrest, sustain a severe cut, or endure a traumatic injury from falling debris. Immediate response through first aid and CPR can mean the difference between life and death. Trained personnel can quickly assess the situation, control bleeding, administer CPR, and utilize an AED when necessary, before professional medical help arrives.

ENHANCED WORKPLACE SAFETY

Providing first aid and CPR training to construction workers throughout the St. Louis region promotes a culture of safety and preparedness. Workers who understand basic lifesaving techniques are more likely to recognize potential hazards and take preventive measures. Additionally, knowing that trained personnel are available on-site increases confidence among the workforce and enhances overall jobsite safety.

LEGAL AND REGULATORY COMPLIANCE

Missouri construction companies must comply with occupational safety regulations, including those set by the Occupational Safety and Health Administration (OSHA). These regulations require that employers ensure prompt medical attention for injured workers. Having trained individuals on-site helps ensure compliance, avoiding costly fines or legal issues while keeping workers safe.

MINIMIZING FATALITIES AND SEVERE INJURIES

The availability of first aid, CPR, and AED-trained personnel significantly reduces the likelihood of fatal incidents. In the case of sudden cardiac arrest, performing CPR and using an AED within the first few minutes can dramatically increase survival rates. For injuries such as fractures or burns, proper first aid can prevent complications and promote faster recovery.

SITE TRAINING INITIATIVE

In an effort to strengthen jobsite safety, SITE held a First Aid/CPR/AED training class on January 7, 2025, at the Training & Leadership Center. Participants learned to recognize the signs and symptoms of injuries and sudden illnesses. The training covered CPR and AED use, including how to identify unresponsive victims, operate equipment effectively, and provide immediate treatment. Valuable hands-on practice ensured participants gained the skills necessary to respond confidently in emergencies.

In a high-risk construction environment, first aid, CPR, and AED training should be a top priority. For construction sites in St. Louis, where development is booming, these lifesaving skills are essential for preventing fatalities, ensuring legal compliance, and fostering a safer work environment. Investing in proper training for workers is a proactive step toward protecting lives and building a stronger, safer community.



IMPROVEMENT ASSOCIATION

2071 Exchange Dr.
St. Charles, MO 63303
(314) 966-2950
Fax: (314) 966-2999

President

Kurt Unnerstall - K.J. Unnerstall Construction Co.

Vice President

Steve Roden - Roden's Landscaping, Inc.

Secretary/Treasurer

Andre Taylor - TaylorMade Construction, LLC

Executive Director

Jeremy Bennett

WWW.SITESTL.ORG

2025 PLANNED EVENTS

Wed., Apr. 9	NETWORKING EVENT Chicken N Pickle
Wed., May 7	GENERAL MEMBERSHIP MEETING - LUNCH Syberg's Dorsett
Wed., Jun. 11	JOINT SITE/ASA NETWORKING EVENT TBD
Mon., Aug. 11	44th ANNUAL GOLF TOURNAMENT & DINNER Norwood Hills Country Club
Wed., Sep. 3	GENERAL MEMBERSHIP MEETING - LUNCH Syberg's Dorsett
Thu., Oct. 2	Y.E.S. CLAYBIRD SHOOT & FUNDRAISER Black Hawk Hunting Club
Thu., Oct. 23	JOINT SITE/APWA GENERAL MEMBERSHIP MEETING Orlando's
Wed., Nov. 5	M/WBE AND NON-M/WBE MEET & GREET Schlafly Tap Room
Thu., Dec. 11	HOLIDAY HAPPY HOUR Bogey Hills Country Club

Visit sitestl.org for future event updates or to register for upcoming events.