



SITE Improvement Association Expo 2026

St. Charles Convention Center
MoDOT Business Development & Compliance
February 24, 2026, 2 pm to 3:30 pm

ST. LOUIS DISTRICT



2.5 Million



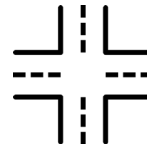
Roadways

1,677 centerline | 5,736 lane miles and 26% of all vehicle miles traveled



Bridges

1,111 non-major bridges
55 major bridges (> 1,000 feet)



Traffic Intersections

1070 locations



Highway Tunnel

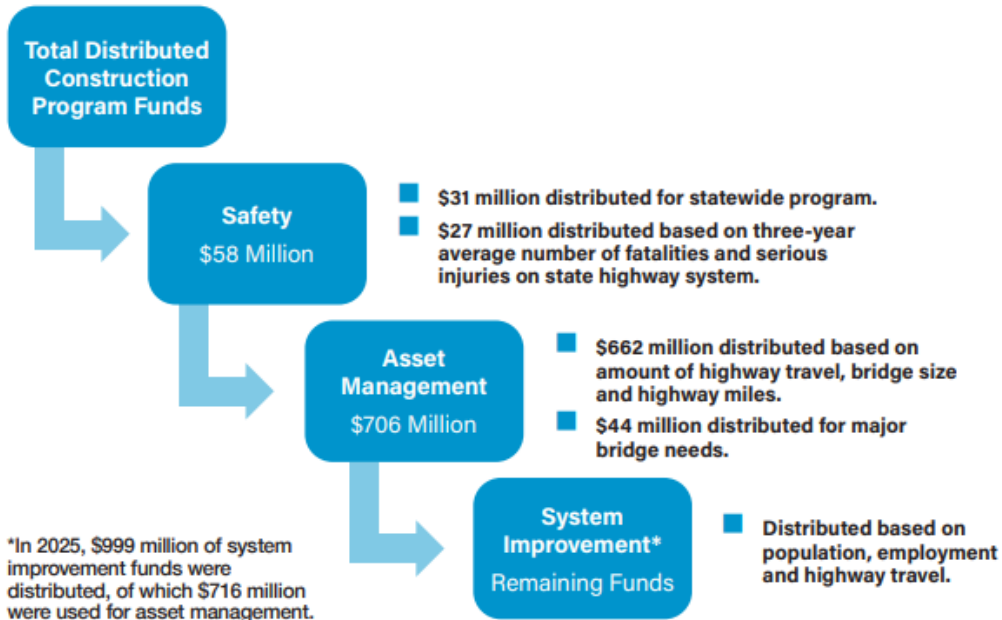
1420 feet, first in Missouri



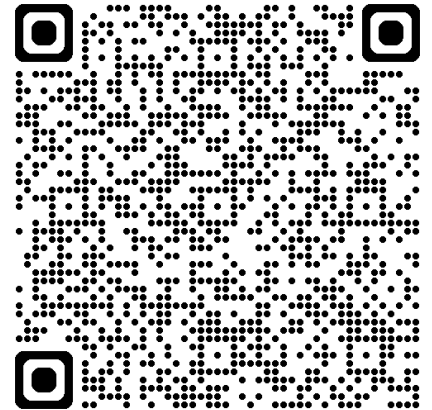
Lambert Int. Airport

15 Million passengers annual

MODOT DISTRIBUTION OF FUNDS



Citizen's Guide to
Transportation Funding





MoDOT FOCUS

- Deliver the **program** (projects).
- Restore **operations**.
- **Work safely** for the public and our employees.
- Focus on **customers**.

A SUCCESSFUL PARTNERSHIP

- 4,000+ projects worth nearly \$10 billion delivered in the last decade
- Innovative problem-solving
- Value engineering
- Design-Build



LARGEST PROGRAM

- Largest program to date
 - \$14.6 billion
 - \$10.7 billion in road and bridge construction
 - 1,400+ projects



Missouri Department
of Transportation
modot.org

STIP OVERVIEW

How are the funds spent?

Asset Management vs Capital Improvement

Category	2025-2029 STIP
Asset Management	83%
Capital Improvement	11%
Other	6%

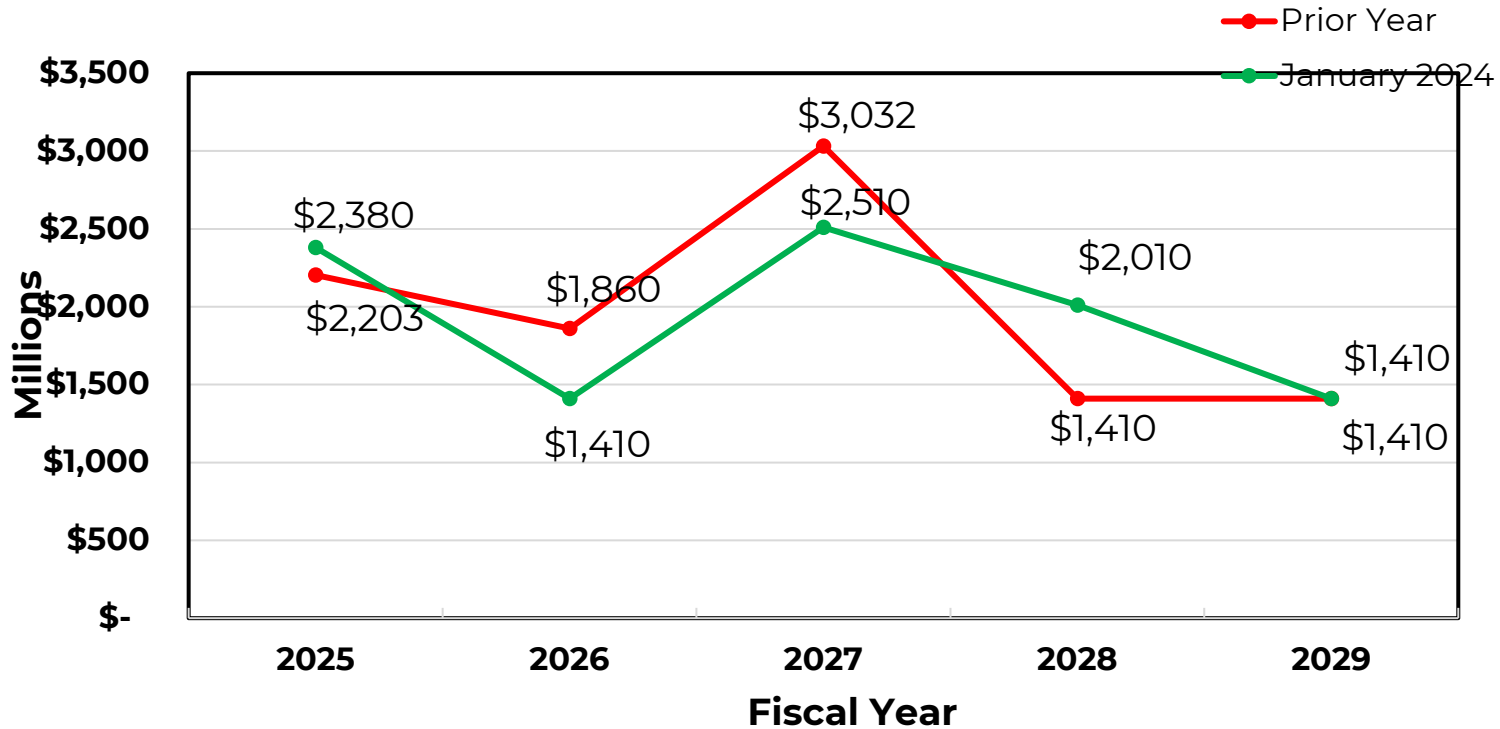
Pavement (miles)

Category	2025-2029 STIP
Interstate/Major	4,869
Minor	8,523
Low Volume	1,979
Total	11,689

Bridges (number)

Category	2025-2029 STIP
Typical Bridge	885
Major Bridge	70
Total	955

2025-2029 STIP CONTRACTOR AWARDS





THEN & NOW

10 years ago:

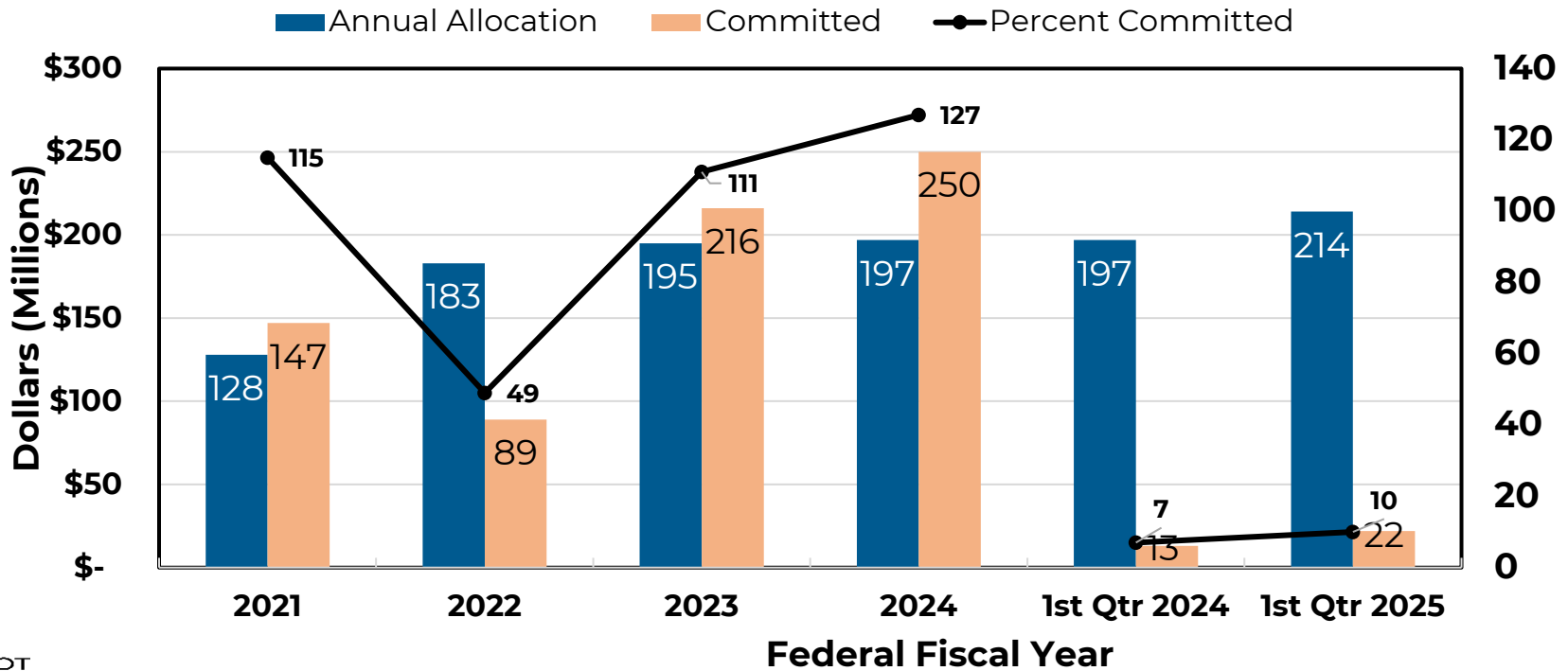
- 20 projects over \$25 million

Today:

- 50 projects over \$25 million

LOCAL PROGRAMS

FUNDS COMMITTED TO PROJECTS



IMPROVE I-70



MAY 2025

Totals listed are STIP funds unless otherwise noted

Planned Capacity Improvements Blue Springs to Wentzville

PROGRAM SCHEDULE: 2024-2030

Truck Parking Multiple Locations Statewide

Beginning in the fall of 2025, a corridor-wide project will evaluate and improve truck parking at multiple locations along I-70 statewide. \$30 million (INFRA grant)

Under Construction - \$1.06 billion

Funded Future Improvements - \$2.2 billion

Blue Springs to Odessa 25 miles

Future Improvements:
\$367 million

- STIP: \$43 million
- General Revenue: \$324 million

2025-2028

Odessa to Concordia 13 miles

Future Improvements:
\$150 million

- STIP: \$0
- General Revenue: \$150 million

Est. Start: 2027

Concordia to Boonville 42 miles

Future Improvements:
\$540 million

- STIP: \$15 million
- General Revenue: \$525 million

Est. Start: 2027

Boonville to Rocheport 13 miles

Completed: Rocheport Bridge
\$240 million

Future Improvements:
\$152 million

- STIP: \$2 million
- General Revenue: \$150 million

Est. Start: 2026

Rocheport to Columbia 14 miles

Future Improvements:
\$440 million

- STIP: \$41 million
- General Revenue: \$399 million

Est. Start: 2025

Columbia to Kingdom City 20 miles

Improvements:
\$426 million

- STIP: \$129 million
- General Revenue: \$297 million

2024-2027

Kingdom City to Warrenton 44 miles

Completed: Mineola Hill
\$31 million

Future Improvements:
\$583 million

- STIP: \$22 million
- General Revenue: \$561 million

Est. Start: 2026

Warrenton to Wentzville 19 miles

Improvements:
\$634 million

- STIP: \$200 million
- General Revenue: \$434 million

2025-2028

PROJECT STATUS

- Design/Procurement
- Under Construction
- Complete

PLANNED CAPACITY IMPROVEMENTS:

STIP funded: \$452 million
General Revenue funded: \$2.84 billion

- 1.1 million jobs depend on I-70
 - Workforce development opportunities
 - I-70 carries 100 million tons of freight
- modot.org/improveI70

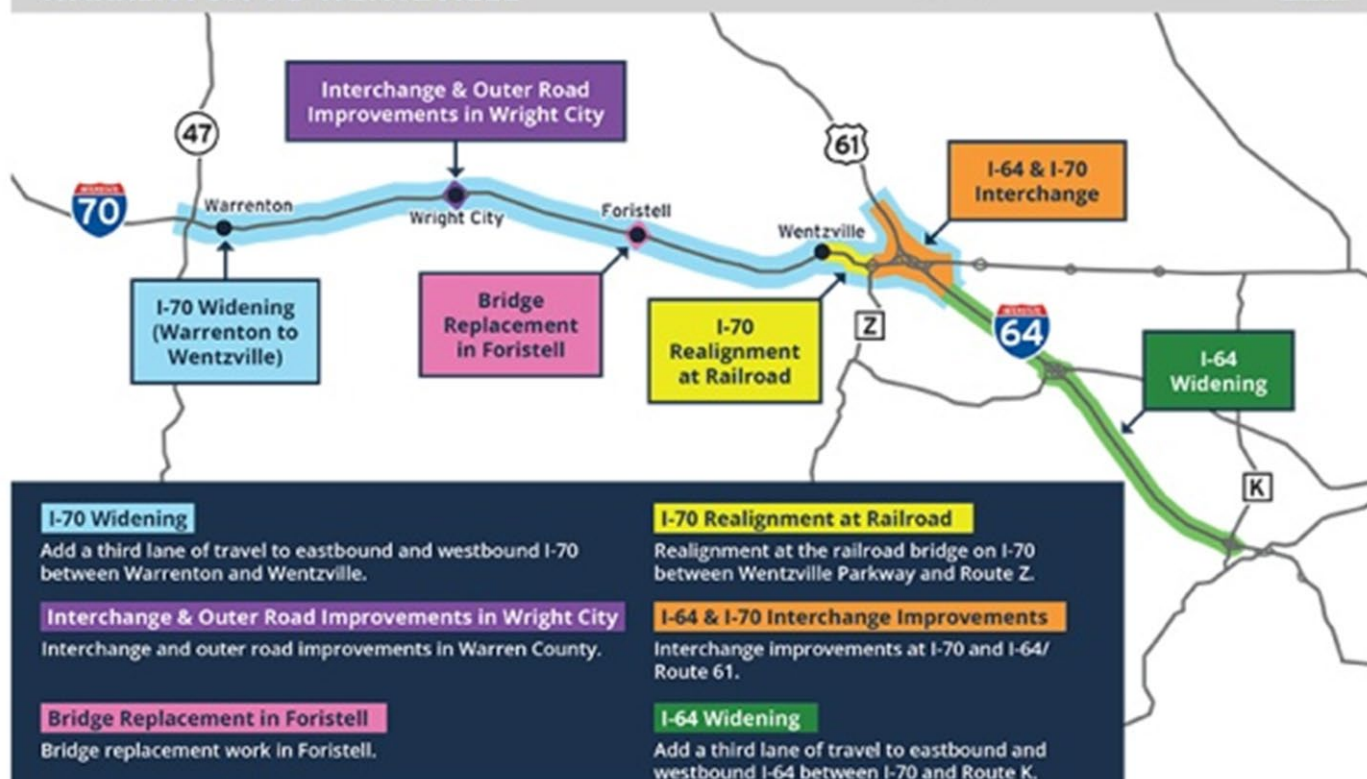
IMPROVE I-70

PROJECT OVERVIEW: WARRENTON TO WENTZVILLE



Project Details:

modot.org/improvei70/warrentonwentzville



I-70 Widening

Add a third lane of travel to eastbound and westbound I-70 between Warrenton and Wentzville.

Interchange & Outer Road Improvements in Wright City

Interchange and outer road improvements in Warren County.

Bridge Replacement in Foristell

Bridge replacement work in Foristell.

I-70 Realignment at Railroad

Realignment at the railroad bridge on I-70 between Wentzville Parkway and Route Z.

I-64 & I-70 Interchange Improvements

Interchange improvements at I-70 and I-64/Route 61.

I-64 Widening

Add a third lane of travel to eastbound and westbound I-64 between I-70 and Route K.

The Warrenton to Wentzville project includes the Improve I-70 and additional legislatively designated General Revenue funding. It also includes previously allocated funds in the state's program for other I-70 and I-64 projects for a total contract cost of \$600 million.

NOVEMBER 2024
improvei70.org

ADA Transition Plan

Construction: 14 projects remaining (\$40 million)

Upcoming ADA Projects:

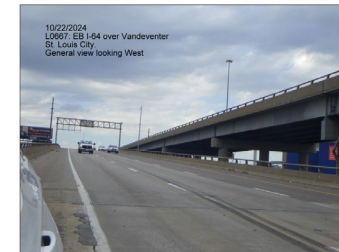
- Telegraph Rd (Rte 231 - two projects)
- Page Ave (Rte D) – Pennsylvania to St. Louis City
- Route 21
- New Halls Ferry Rd (Rte. AC)
- Manchester Rd
- Lindbergh (Rte 67 – two projects)



COMING SOON!

Upcoming Notable Projects:

- Route 47 - Franklin County
- I-64 in City of St. Louis
- I-270 between 367 and Mississippi River
- I-44 Roadway and Bridges: Franklin, St. Louis County and St. Louis City





FORWARD 44

FY 2024: \$20 million in General Revenue for I-44 environmental study

- Oklahoma state line to Route 100 (Franklin County)
- Update environmental studies completed in mid 2000s
- Initial study complete spring 2025

FY 2025: \$577.5 million in General Revenue for corridor improvements

- I-44 Springfield Route 160 to Strafford
- I-44 at I-49 Fidelity improvements

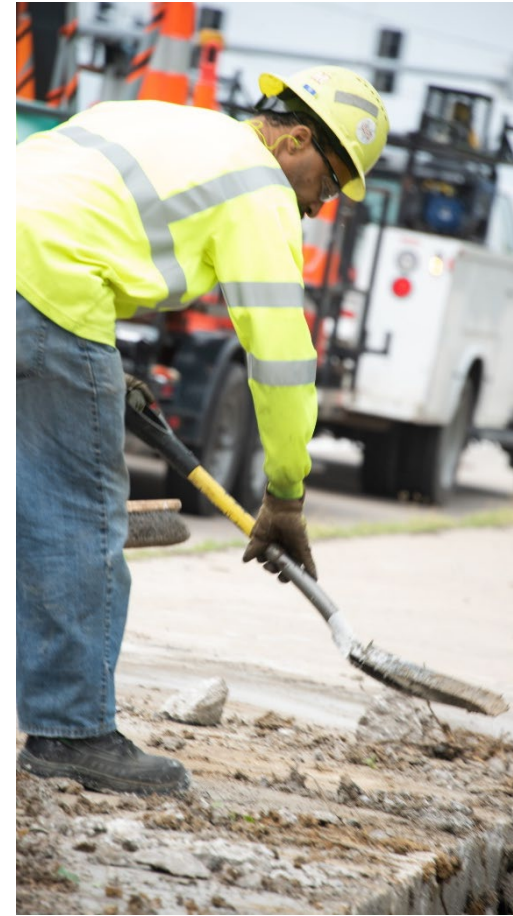
DRAFT Statewide Transportation Improvement Program



- Large program
- \$13.2 billion
- \$9.5 billion in road and bridge construction
- MHTC to consider comments and approval July 9th

SAFETY FOCUS

- 2023: 35 work zone fatalities
 - Most ever in Missouri
- Improve safety of MoDOT, contractors, subcontractors, and traveling public
- Improve work zone setups
- Educate drivers: BUPD



MODOT Business Development & Compliance



Updates 2026

MoDOT DBE Website link

- <https://www.modot.org/dbe-program>
- <https://modot.gob2g.com/>

Not accepting New DBE Applications at this time.

- **Re-Evaluations (IFR)** - In Process of Reviewing DBEs
 - Personal Net Worth Statement with backup documentation
 - Personal Narrative
- **Signet - Infotech** – Monthly DBE Payment Reporting
- **MoDOT DBE Mentor Protégé Program**
- **On-the-Job Training Program**





MoDOT DBE Certification Re-Evaluations

<https://www.modot.org/dbe-program>

scroll down toward bottom of page

Currently, MoDOT is not accepting new DBE applications.

DBE REEVALUATION SUBMISSION

» Click here to upload reevaluation documents via Box.com «

Or

» Click here to complete reevaluation application via B2Gnow «

[DBE Interim Final Rule \(IFR\)](#)

[USDOT DBE IFR Letter - 10-03-2025](#)

[USDOT DBE IFR FAQ's - Updated 12-01-2025](#)

[Personal Net Worth Statement \(PNW\)](#) (Provide supporting documentation for each Worksheet)

RESOURCES



MoDOT BDC Secured Site Box Uploader

<https://app.box.com/f/cdad1d15a8c24e2d85d806815c669944>



Submit files

Upload files *

A blue icon depicting a cloud with an upward-pointing arrow, surrounded by several document icons, representing a file upload function.

Drag and drop files

Select Files

Email address *

Submit



MoDOT BDC Certification Management System

<https://modot.gob2g.com/>



Notice to All DBE/ACDBE Firms:

Effective October 3, 2025, the U.S. Department of Transportation (DOT) has issued an [Interim Final Rule \(IFR\)](#) that immediately changes how the Disadvantaged Business Enterprise (DBE) and Airport Concession DBE (ACDBE) Programs operate nationwide.

What This Means:

- All DBE/ACDBE certifications will be reevaluated under new federal eligibility standards.
- Until reevaluations are complete, existing DBE/ACDBE certifications are not valid for contracting purposes and cannot be counted toward goals.
- Our Agency and all sub-recipients have paused goal setting.

Please do not submit new certification applications or DOEs on existing certifications until further notice. Our agency is working closely with the U.S. DOT to establish a clear process for these changes.

Vendor Certification

Search and/or join our database of certified vendors

- Apply/Renew for Certification
- MRCC Directory (Missouri UCP)

About the System

Learn more about this system and how it works today

- Information for Vendors

Account Access

Lookup Vendor accounts or reset user passwords

- Account Lookup
- Forgot Password

MRCC Bidding Opportunities

Doing Business with the Missouri Regional Certification Committee (MRCC)

- View Opportunities

System Training

Learn how to fully utilize our system with a live trainer

- Training



MoDOT BDC – Signet Payment Tracking System



https://www.infotechexpress.com/login?return_to=%2Fmy_account

A screenshot of the Infotech Express login page. The page is split into two main sections. On the left, there is a white sign-in form with the "infotech." logo at the top. Below the logo, it says "Sign in" and has a text input field for an email address, a "Remember me" checkbox, a blue "Continue" button, and a link for "Don't have an account? Sign up". On the right, there is a dark blue banner with a background image of a road. The banner contains the text "Welcome to the Infotech® Express service!" in large blue font, followed by a paragraph: "The Infotech Express service is your construction services hub. Log in to get started." and a white button with blue text that says "Contact Us →".



MoDOT BDC OJT Program

<https://www.modot.org/job-trainingcontract-compliance>



BUSINESS DEVELOPMENT AND COMPLIANCE

EXPLORE THIS TOPIC

Home

▼ DBE Program

The Path to Determining Overall DBE Goal

DBE Frequently Asked Questions

Mentor-Protégé Program

Trainings and Webinars

Supportive Services

▼ Title VI

Filing a Complaint: Title VI

Helpful Tools

▼ Americans with Disabilities (ADA)

On The Job Training/Contract Compliance

On the Job Training Program

Training and upgrading of minorities and women to journey status is a primary objective of the On The Job training requirement.

The OJT Program is mandated by the United States Department of Transportation. The OJT Program requires MoDOT to set a trainee goal on each Federally Funded Project.

MoDOT assigns training requirements on contracts that are Federally Funded, and that meet the criteria to have a trainee requirement.

Training requirements are assigned in slots, consisting of 1000 trainee hours per slot. The contractor is contractually required to meet the training requirement or show that they made a good faith effort to do so.

[Trainee Notification \(OJT-1\)](#)

[Contractor Monthly Trainee Report \(OJT-2\)](#)

[Trainee Completion Report \(OJT-3\)](#)

[Trainee Contact \(OJT-4\)](#)

[Trainee Discrimination Complaint \(OJT-5\)](#)

[Training Summary \(OJT-6\)](#)

[OJT Training Special Provision](#) (effective 04-15-2022)



MoDOT DBE Mentor Protégé Program

<https://www.modot.org/mentor-protége-program>



BUSINESS DEVELOPMENT AND COMPLIANCE

Mentor-Protégé Program

EXPLORE THIS TOPIC

- Home
- DBE Program
 - The Path to Determining Overall DBE Goal
 - DBE Frequently Asked Questions
 - Mentor-Protégé Program**
 - Trainings and Webinars
 - Supportive Services
- Title VI
 - Filing a Complaint: Title VI
 - Helpful Tools
- Americans with Disabilities (ADA)
 - Filing a Complaint: ADA
 - Resource Links
 - Letting Information
 - On The Job Training/Contract Compliance
 - Unified Certification Program
 - MRCC Directory
 - Links
 - Contact the Business Development and Compliance Division

MoDOT's Mentor-Protégé Program centers on the development of mutually beneficial business relationships between DBE firms and prime contractors.

Mentor-Protégé teams come together for a specific project or for general capacity building and development of the DBE firm for up to three years.

MoDOT's Mentor-Protégé Program is consistent with goals and guidelines outlined within FHWA Title 49 CFR, Part 26.

Firms interested in becoming a Mentor (prime contractor) or a Protégé (DBE firm) may fill out the Mentor Protégé Interest Form. Once complete, forms can be sent to dbes@modot.mo.gov. Following submittal, the firm's information will be posted on MoDOT's BDC website to facilitate matching your firm to another interested Mentor or Protégé. Interested firms are expected to self-match. MoDOT staff may be able to assist with an introduction.

Alternatively, firms can submit an interest form here for becoming a [Mentor](#) or a [Protégé](#) (click on the appropriate link).

Mentor-Protégé Recognition Program

The Missouri Department of Transportation has developed the Mentor Protégé Recognition Program (MPRP) to acknowledge the informal relationships that DBE firms and prime consultant and/or prime contractors have established. [Click for additional information](#)

Mentor-Protégé Program Participants

- Millstone Weber, LLC and Kendall's Hauling, LLC
- Millstone Weber, LLC and Dynamic Logistics, LLC
- Millstone Weber, LLC and Hillsdale Demolition Contracting, LLC

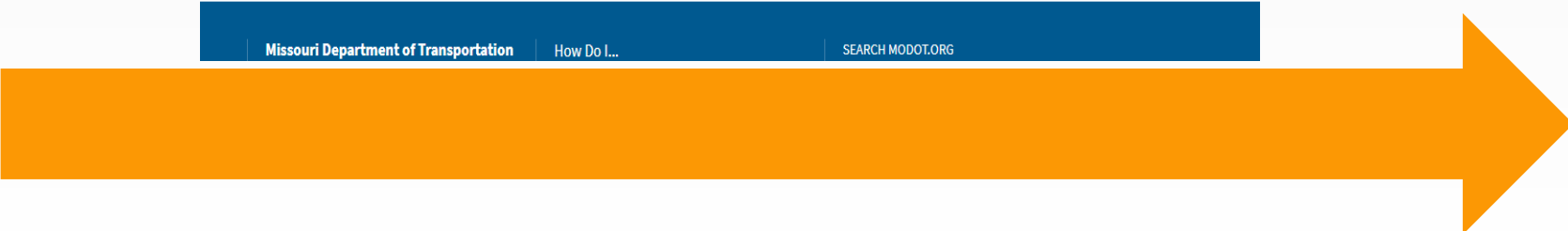
MoDOT Mentor Protege Guidelines [↗](#)

MoDOT Mentor / Protege Program Sample Development Plan [↗](#)

MoDOT Mentor Application [↗](#)

MoDOT Protege Application [↗](#)

Missouri Department of Transportation How Do I... SEARCH MODOT.ORG



Business Development & Compliance Forms

<https://www.modot.org/dbe-program>

(scroll down to bottom of webpage)



FORMS

- [NAICS Code Expansion Form](#)
 - [Resource for NAICS Code Information](#)
- [DBE Identification Submittal Form](#)
- [DBE Change Form](#)
- [DBE Termination Form](#)
- [DBE Final Payment Form](#)
- [DBE Regular Dealer-Distributor Affirmation Form](#)
- [Personal Net Worth \(PNW\) Statement](#)



Business Development & Compliance St. Louis District & Southeast District



Contact Information

Missy Stuedle – MoDOT BDC Division Director

Missy.stuedle@modot.mo.gov

Phone: (573) 751-1216

Zainab Jasim- MoDOT BDC Division Manager

Zainab.Jasim@modot.mo.gov

Phone: (573) 751-2806

Cassandra Peoples, MoDOT Contract Monitoring Specialist- MoDOT St. Louis District
St. Charles, Franklin, & Jefferson Counties

Cassandra.Peoples@modot.mo.gov

Phone: 314-453-5029

Shanna Lay, MoDOT Contract Monitoring Specialist, MoDOT St. Louis *servicing* Southeast District – All Counties

shannah.lay@modot.mo.gov

Phone: 314-453-1877

April Hendricks-Brown- MoDOT Contract Monitoring Specialist, MoDOT – St. Louis District
St. Louis City & St. Louis County

April.Hendricks-Brown@modot.mo.gov

Phone: 314-453-1872



Commercially Useful Function (CUF)



- Commercially Useful Function reviews are done to verify the execution of the work contracted by a DBE.
- The DBE shall be responsible, with respect to materials and supplies used on the Contract, for negotiating price, determining quality, quantity, ordering the material, installation (where applicable) and paying for the material itself.
- Be sure to fully complete the CUF form and mark N/A to any sections that do not apply.
- Upload the completed CUF forms to eProjects.



CUF – When Required & Frequency

- All federally funded projects – includes 0% DBE goal
- All DBE's – committed or not
- Prime DBE's
- All Work Scopes
- Supplier/Manufacturer CUF – every 30 days
 - [Home - Materials Supplier C.U.F. \(mo.gov\)](#)



CUF Red Flags

- DBE performing work outside of its known experience or capability.
- DBE provides little or no supervision of the work, DBE superintendent is not a regular firm employee or supervision performed by personnel not under DBE firm's control.
- DBE workforce not under DBE's control or direction or work is performed by personnel employed by another business.
- Substantial portion of equipment used by the DBE firm belongs to the prime/another contractor with no formal lease agreement.
- Materials/supplies delivered, billed, or paid by another business.



CUF Red Flags

- DBE firm subcontracts or assigns any portion of the work to another firm.
- DBE working without a subcontract agreement approved by the Department except in cases of trucking.
- DBE trucker utilizes prime's trucks.
- DBE prime subcontracts more than 50% of the contract value.
- DBE prime only purchases materials while performing little/none of the work.



CUF Red Flags

- Agreement between prime and DBE artificially inflates the DBE participation or erodes the ownership, control or independence of the firm.
- DBE firm works for only one prime.
- Employees work for both DBE & prime.
- Inquiries by MoDOT or FHWA answered by prime.
- DBE firm owner unaware of status of the work or firm's performance.

Commercially Useful Function (CUF) Form



CUF Field Review – Inspector to Complete

Contract ID: _____ Job No.: _____ Date: _____
Prime Contractor: _____ DBE Contractor: _____
Type of Work Being Performed Today: _____
DBE Representative: _____
DBE Representative Reports to: _____

Manufacturers – a DBE fabricates an item, which may include installation.

1. Who arranges the delivery of materials? List employee name: _____
2. Who schedules the delivery of materials? List employee name: _____
3. At what facility are product(s) manufactured at? _____
4. Who ensures product quality? List employee name: _____

N/A

Commercially Useful Function (CUF) Form



Furnish & Install (Traffic Control, Guardrail, Striping, Landscaping, Electrical, rebar, curb/gutter, Sidewalks, etc.)

1. Has the firm owner been present on the jobsite?

Yes No

Owner Name: _____

2. Who is present on the job site today? Provide first and last names of everyone present on the site.

3. Do you have equipment (trucks, heavy equipment, distribution) on the job site today?

Yes, if yes, are they Leased or Owned? Don't Know

No Don't Know

4. Are there any subcontractors working under this company? No

Yes Name of Firm: _____

N/A

Truckers - typically hauling asphalt mix, dump trucking, and removals.

1. List Driver names: _____

2. List license plate #'s: _____

3. Are your trucks/trailers Leased or Owned? Don't Know

4. Are there any truckers working under this company as a second tier subcontractor? No

Yes Name of Firm: _____

N/A

Commercially Useful Function (CUF) Form



Material Suppliers - aggregate, steel/rebar, pipe, liquid asphalt, electrical, lighting/signals – no installation.

1. What products do you supply? _____
2. Which manufacturers do you purchase products from? _____
3. If you have a warehouse, is it open to the public? Yes No
 - a. If so, what are the hours? _____
4. Who arranges material delivery? _____
5. Who delivers materials to project sites? _____
6. What equipment is used to deliver material? _____

Project on-site

7. Who delivered today's materials? Employee(s): _____
8. License Plate #'s: _____
9. What products were supplied for this project? _____
10. What facility were the materials picked up from? _____
11. Are your trucks/trailers Leased or Owned? Don't Know

N/A

Commercially Useful Function (CUF) Form



Field Observation Review

1. Describe the recent type of work observed and/or take photos: _____

 2. Were there any employees that you observed and appeared to be part of the DBE crew that the DBE representative did not mention above?
 Yes, if so, conduct a wage rate interview on these employee(s).
 No
 3. Did the DBE have any equipment on the site?
 Yes. Continue to question #4
 No. Skip to question #6.
 4. List the types of major equipment (trucks, heavy equipment, distribution) used by the DBE:

 5. Does the equipment have the DBE's markings or emblems?
 Yes No markings
 No, list other name, and take photo : _____
 6. Manufacturers: What products were manufactured for this project? _____
 7. Do you believe the DBE operators are controlling their own work?
 Yes, if yes list the name of the employee(s) responsible for the equipment:

 No, list the name of the individuals directing the work: _____

 8. Do you believe the DBE employees are directing their own work?
 Yes
 No, list observations here: _____
 9. Issue(s) reported to ECR: _____

- Reported by: _____ Reported to: _____ Date Reported: _____

N/A phone interview conducted



Commercially Useful Function (CUF) Form

ECR Findings		
Specialist:	<input type="text"/>	Notified: <input type="text"/> Date: <input type="text"/>
Findings:	<input type="text"/>	
<input type="checkbox"/> No findings, DBE in compliance		



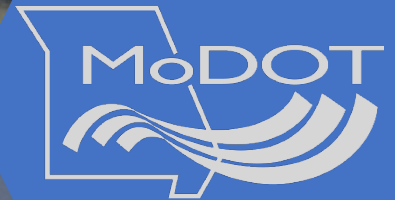
CUF – Why all the Questions?

- DBE Regulation
- Verification of:
 - Employees
 - Equipment
 - Facilities
- Stewards of taxpayer dollars

Buckle Up Phone Down

It is the Law in Missouri





MoDOT St. Louis

- 1-888-ASK-MoDOT or 314-275-1500
- SLCommunications@modot.mo.gov
- https://www.x.com/MoDOT_StLouis

